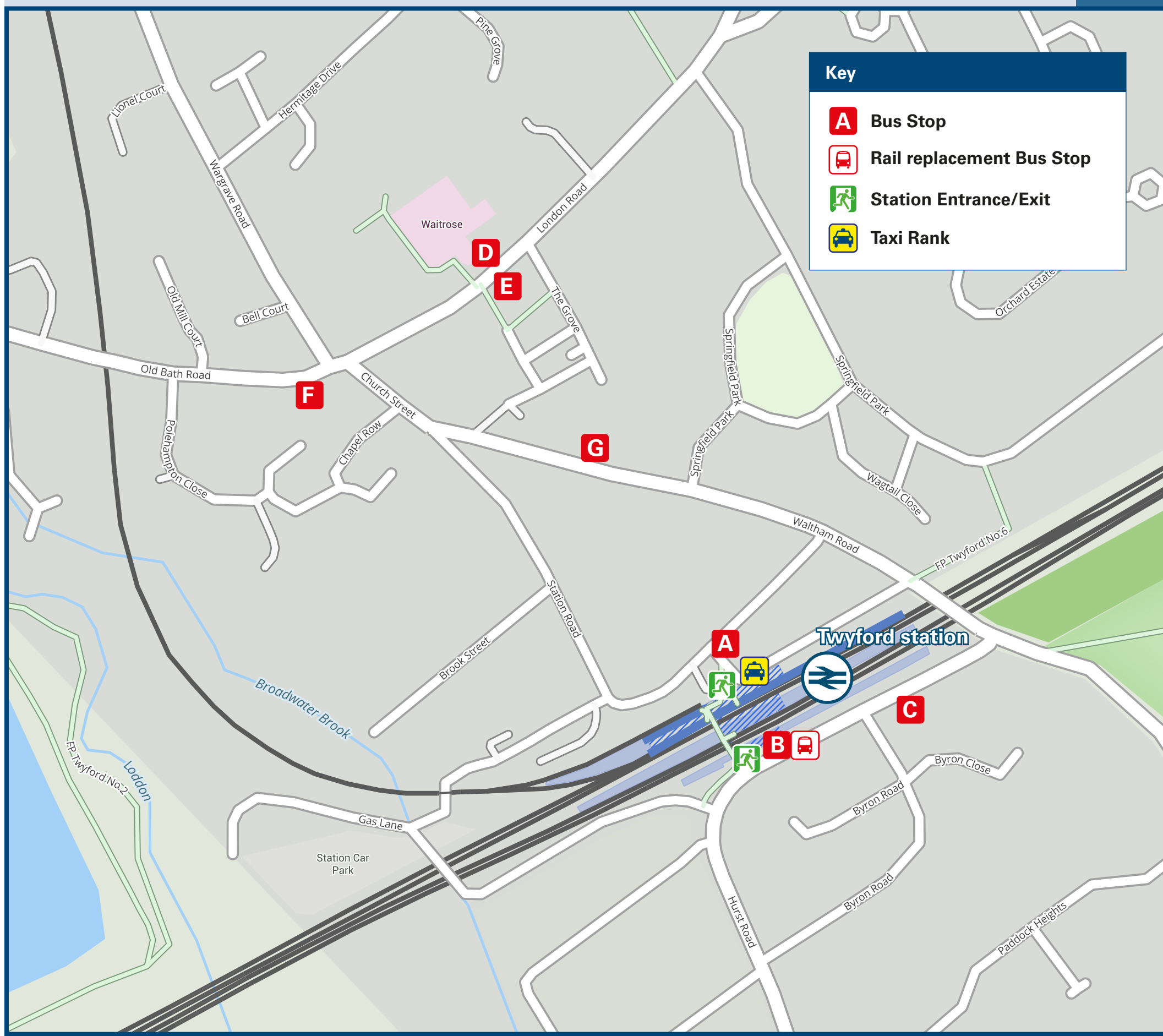




Twyford Station

Onward Travel Information

Buses and Taxis



Rail replacement services depart from Station Road, at the front of the station.

Local area map



Main destinations by bus

(Data correct at March 2026)



DESTINATION	BUS ROUTES	BUS STOP
Charvil	128, 129#	B
	12, 127, 850	E
	12, 127, 128, 129#, 850	F
Davis Street (Dinton Pastures)	128, 129#	C, G
Emmbrook (Reading Road)	128, 129#	C, G
Hare Hatch	227~	A
	127	D
Henley-on-Thames	850	D
High Wycombe	850	D
Hurst	128	C, G
	127	D
Knowl Hill	227~	A
	127	D
Maidenhead	127	D
	227~	A
Marlow	850	D

DESTINATION	BUS ROUTES	BUS STOP
Reading College	128, 129#	B
	12, 127, 850	E
	12, 127, 128, 129#, 850	F
Reading (Town Centre)	128, 129#	B
	12, 127, 850	E
St Mark's Hospital	12, 127, 128, 129#, 850	F
	227~	A
Sonning Village	128, 129#	B
Twyford (Amberley Drive)	12, 127, 850*	E
	850	D
Twyford (Broad Hinton)	12, 127, 128, 129#, 850*	F
	128, 129#	C, G
Upper Wargrave (Highfield Park)	127	D
Waltham St Lawrence	227~	A
Wargrave	850	D

DESTINATION	BUS ROUTES	BUS STOP
Whitley Green	128, 129#	C, G
Winnersh (Crossroads)	128, 129#	C, G
Wokingham	128, 129#	C, G
Woodley	128	A, F

Notes

Bus routes 12, 127 & 128 operate services on Mondays to Saturdays, only.
 Bus route 850 operates a daily service, Mondays to Sundays.
 For bus times and days of operation please contact Traveline on www.traveline.info or call: 0871 200 22 33

- Direct trains operate from this station to this destination.
- For connecting train services to Marlow, please change trains at Maidenhead.
- For connecting train services to Winnersh and Wokingham, please change trains at Reading.

* Bus route 850 calls at Sonning A4 Bath Road, not the village centre.
 # Bus route 129 operates a limited daytime service on Mondays to Fridays, only.
 ~ Bus route 227 operates a limited daytime service on Mondays to Saturdays, only.

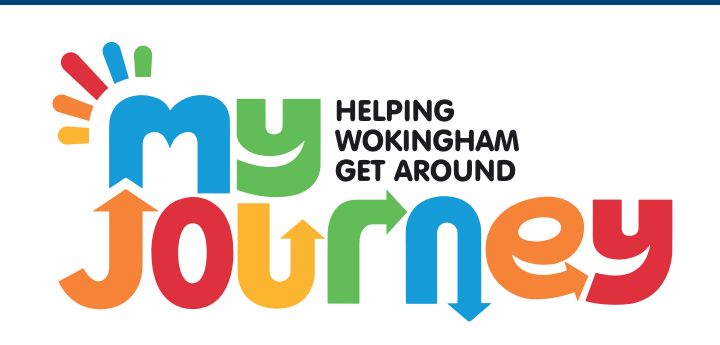
Taxis

Twyford station is served by a taxi rank or cab office. Check availability before travelling, and pre-book if necessary. Please consider using the following local operators: (Inclusion of this number doesn't represent any endorsement of the taxi firm)

Loddon Cars
0118 932 1321

Twyford Executive Cars
0118 903 4903

Sky Taxis
0118 934 3536



Further information about all onward travel

Local Cycle Info myjourneywokingham.com For more information about cycle routes.	National Cycle Info walkwheelcycletrust.org.uk	Bus Times See timetable displays at bus stops. www.traveline.info 0871 200 22 33 calls cost 10p per minute plus your phone company's access charge	PlusBus plusbus.info PlusBus is a discount price 'bus pass' that you buy with your train ticket. It gives you unlimited bus travel around your chosen town, on participating buses. Visit www.plusbus.info
---	--	---	---

National Rail Enquiries

Online nationalrail.co.uk	NRE App Free National Rail Enquiries app for iOS and Android	Social Media facebook.com/nationalrailenq @nationalrailenq	Alert Me You can sign up to Alert Me messages on the National Rail Enquiries website where you can receive train and platform notifications directly to your smart phone. nationalrail.co.uk/alertme	Contact Centre 03457 48 49 50 Calls cost no more than calls to geographic numbers (01 or 02) and may be recorded.	PlusBike nationalrail.co.uk/plusbike For more information.
---	--	---	---	--	--



This poster shows details of popular destinations and main, frequent bus routes. Additional services may run, so please check with Traveline or see posters at local bus stops. Whilst considerable care has been taken to ensure the information contained on this poster is correct and accurate, National Rail cannot accept responsibility for any loss or inconvenience caused by any errors or omissions, or for loss, damage, injury or inconvenience relating to the cancellation, alteration, delay or diversion of a service. For any feedback, please e-mail comments@onwardtravelposters.com