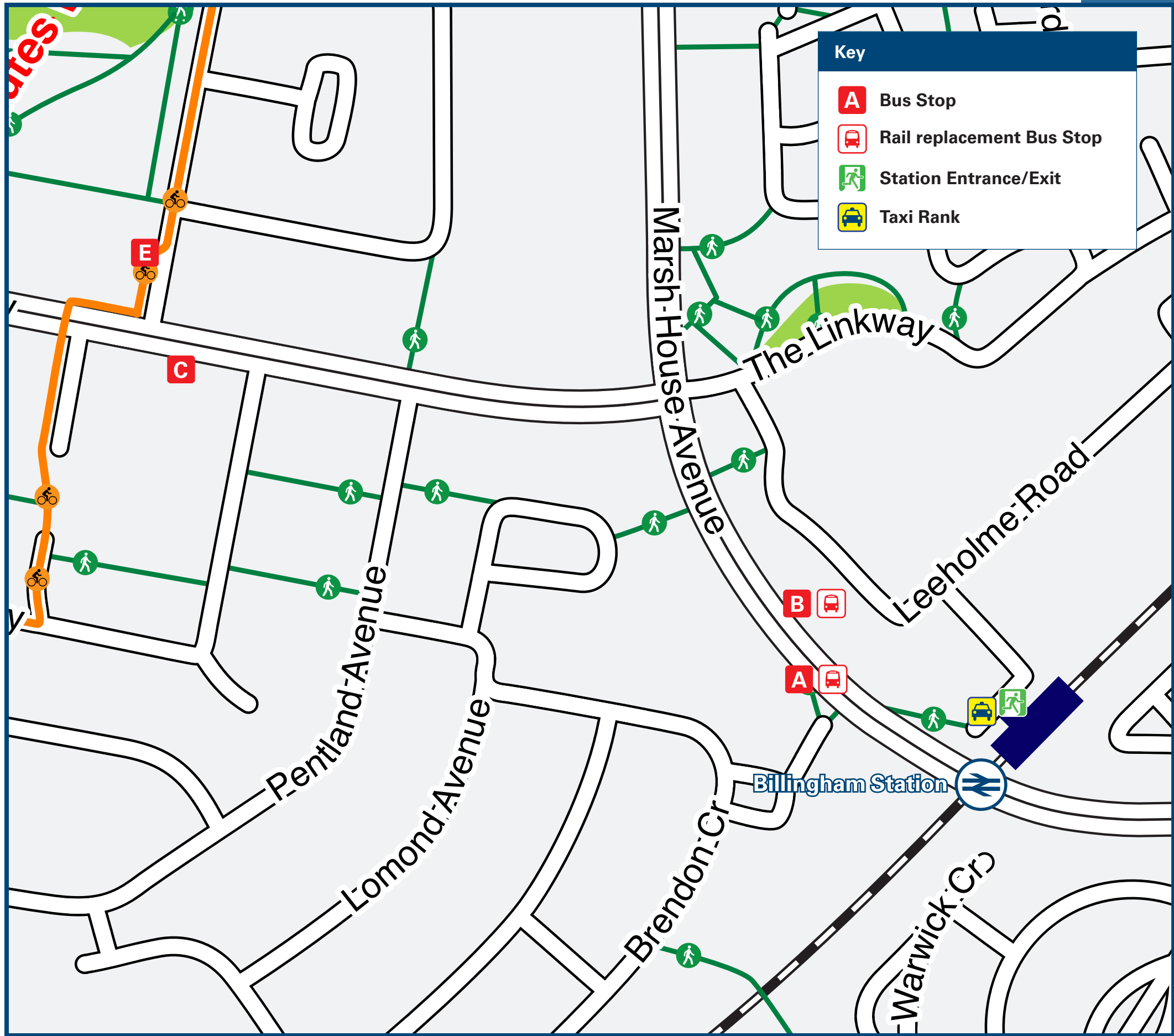




Billingham Station

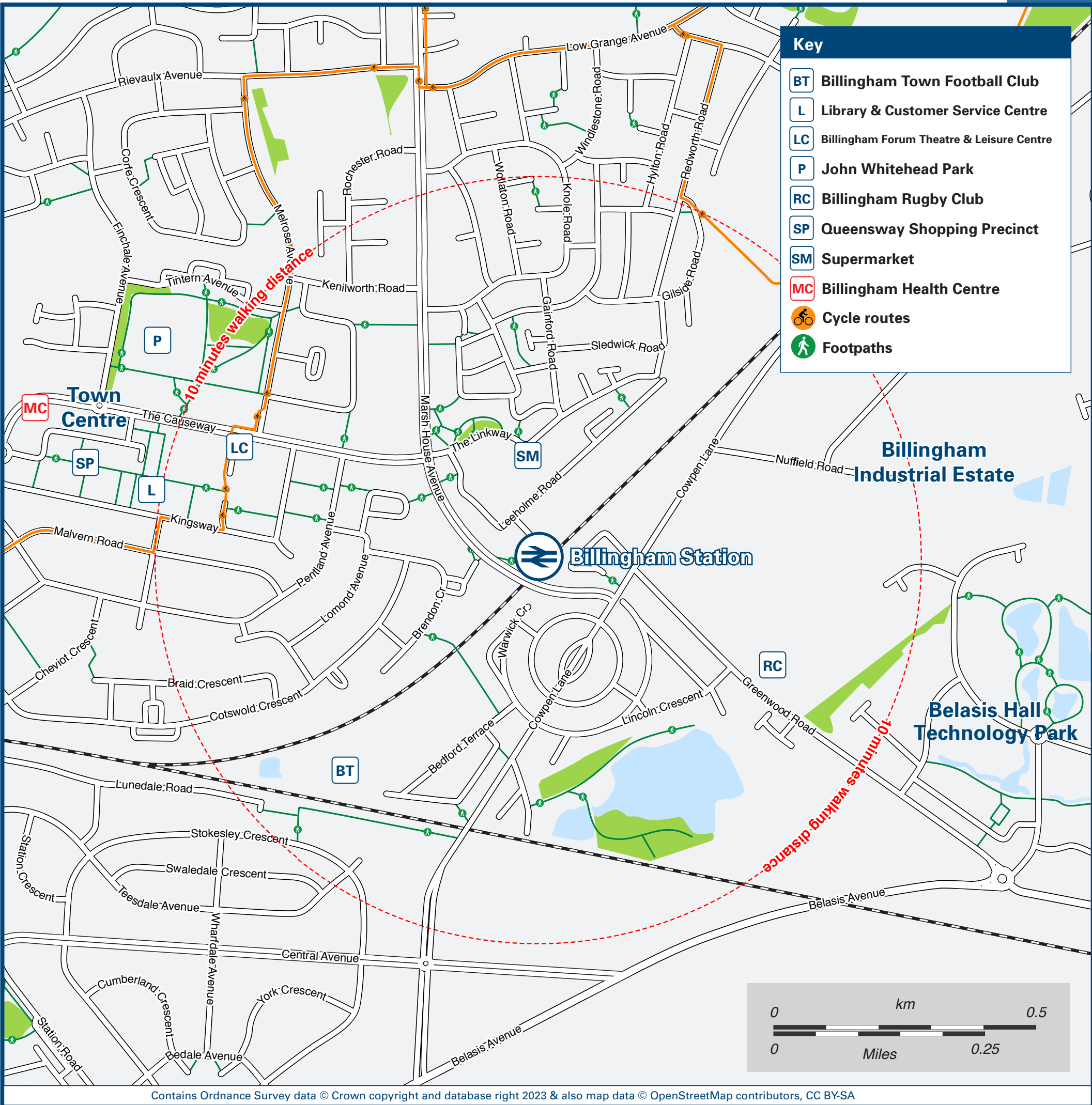
Onward Travel Information

Buses and Taxis



Rail replacement bus stops on Marsh House Avenue; Tesco side for Middlesbrough, opposite side for Hartlepool.

Local area map



Main destinations by bus

(Data correct at October 2024)



DESTINATION	BUS ROUTES	BUS STOP
Billingham (Town Centre)	34, 52, X40	
Billingham Stores (for The Green)	34, 52	
Greatham	36	
Hartlepool (Owton Manor)	36	
Hartlepool (Rift House)	36	
Hartlepool (Rossmere)	36	
Hartlepool (Town Centre)	36	
High Grange	34	
	36	

DESTINATION	BUS ROUTES	BUS STOP
Low Grange	34, 52	
	36	
Middlesbrough (Town Centre / Bus Station)	34	
Mount Pleasant	52	
	35	
Newport	34	
Newton Bewley	36	
Norton	52, X40	
	35	
Norton Road	52	

DESTINATION	BUS ROUTES	BUS STOP
Owington Farm	34, 52	
	36	
Portrack	34	
Stockton (Town Centre)	52, X40	
	35	
Wolviston (Post Office)	X40	
Wynyard Business Park	X40	
Notes		
Bus routes 34 and 35 operate daytime services, daily. Bus routes 36 and 52 operate a daytime and evening service daily. Bus route X40 operates a daytime service on Mondays to Saturdays, only. No Sunday service. For bus times please see bus stop timetables or contact Traveline on 0871 200 22 33 or visit connectteesvalley.com		
Direct trains operate to this destination from Billingham.		
It's a 10 to 15 minutes walk from this station to Billingham Town Centre, see maps for directions.		

Taxis

Billingham station is served by a taxi rank or cab office. Check availability before travelling, and pre-book if necessary. Please consider using the following local operators: (Inclusion of this number doesn't represent any endorsement of the taxi firm)

Billingham Cars
01642 919 898

Swinny's Taxi 07513
485 814

Genesis Cars
01642 983 034

Further information about all onward travel

Local Cycle Info	National Cycle Info	Bus Times	NextBuses	PlusBus
stockton.gov.uk For more information about cycle routes.	sustrans.org.uk Sustrans is the UK's leading sustainable transport charity.	See timetable displays at bus stops. www.traveline.info 0871 200 22 33 calls cost 15p per minute plus your phone company's access charge	Find the bus times for your stop. Search for a bus stop by entering a postcode, street & town or a stop name & town.	plusbus.info A discount price 'bus pass' that you buy with your train ticket. It gives you unlimited bus travel around your chosen town, on participating buses.

National Rail Enquiries

Online	NRE App	Social Media	Alert Me	Contact Centre	PlusBike
nationalrail.co.uk	Free National Rail Enquiries app for iOS and Android	facebook.com/nationalrailenq @nationalrailenq	You can sign up to Alert Me messages on the National Rail Enquiries website where you can receive train and platform notifications directly to your smart phone. nationalrail.co.uk/alertme	03457 48 49 50 Calls cost no more than calls to geographic numbers (01 or 02) and may be recorded.	nationalrail.co.uk/plusbike For more information.



This poster shows details of popular destinations and main, frequent bus routes. Additional services may run, so please check with Traveline or see posters at local bus stops. Whilst considerable care has been taken to ensure the information contained on this poster is correct and accurate, National Rail cannot accept responsibility for any loss or inconvenience caused by any errors or omissions, or for loss, damage, injury or inconvenience relating to the cancellation, alteration, delay or diversion of a service. For any feedback, please e-mail comments@onwardtravelposters.com

Scan this code with your mobile for full station information.