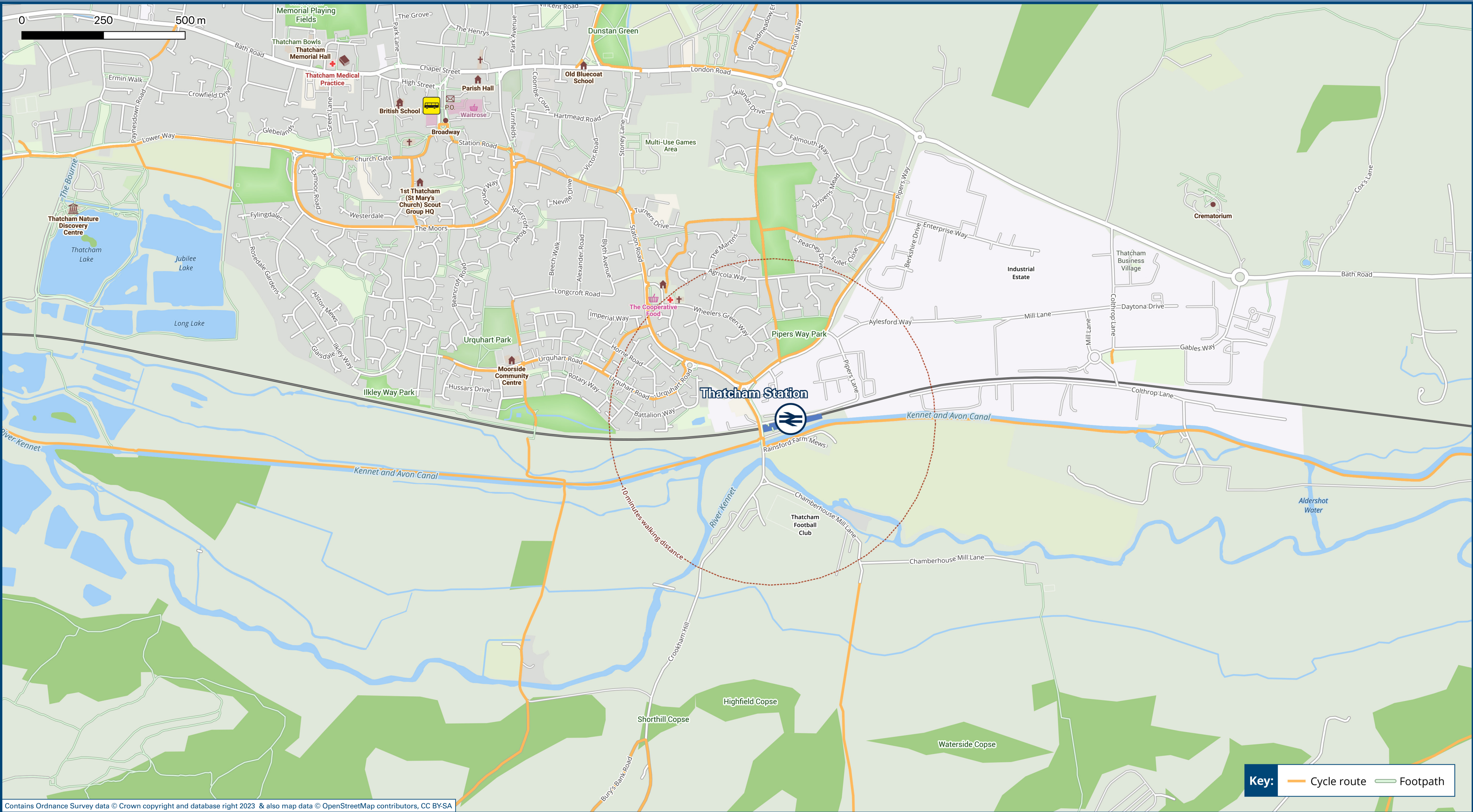




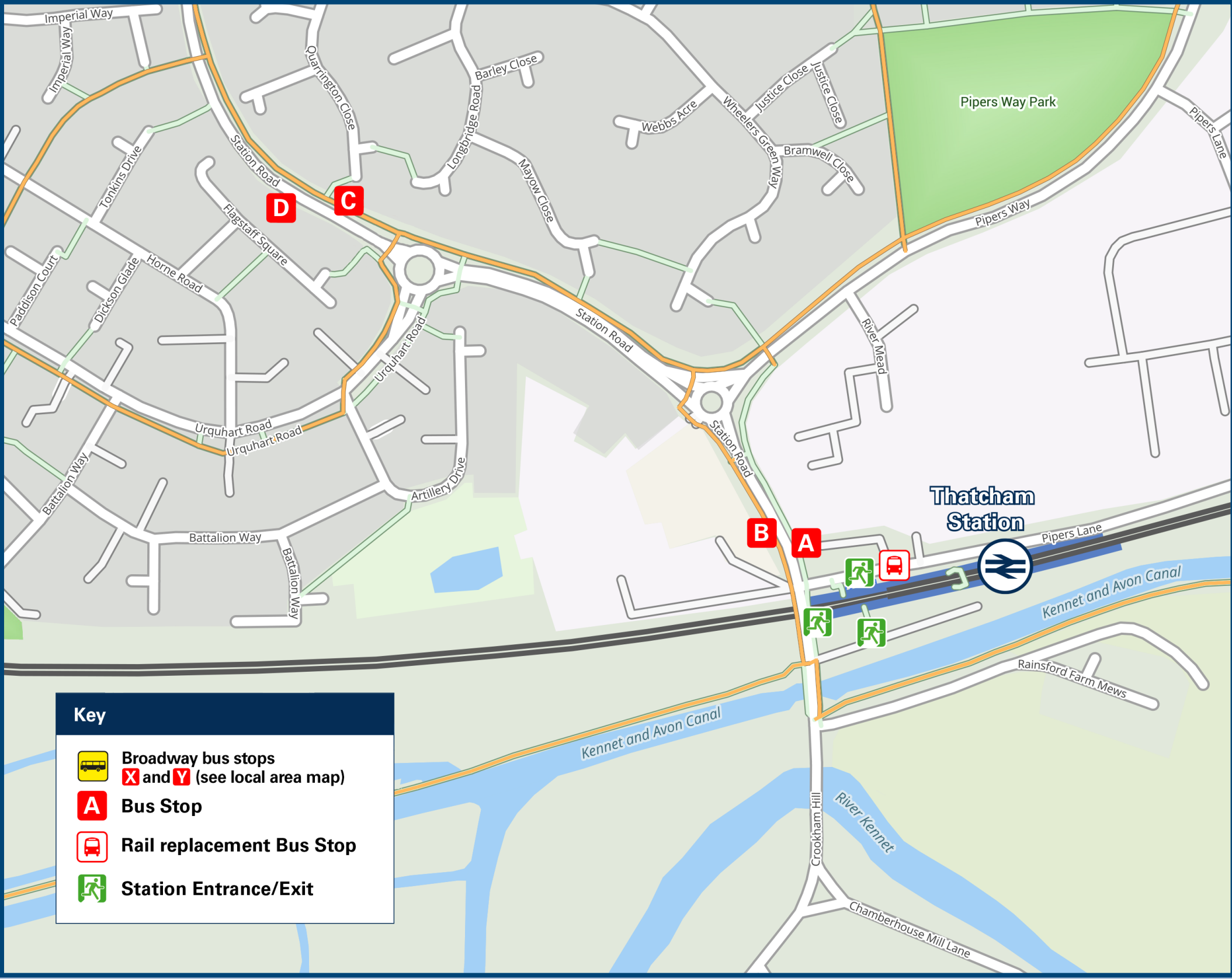
Thatcham Station

Onward Travel Information

Local area map



Buses



 Rail replacement buses/coaches depart from outside the station building on Pipers Lane.

Main destinations by bus

(Data correct at November 2023)

DESTINATION	BUS ROUTES	BUS STOP
Aldermaston (The Street)	44	A
Aldermaston Wharf (for Kennet & Avon Canal)	44	A
Baughurst (Heath End Road)	1(jet black)	Broadway Y
Beenham	44	A
Bradfield	44+	A
Brimpton	44	A
Calcot	44+	A
Crookham Park	44	A
Englefield	44+	A
Newbury Wharf (Town Centre)	1a	D
	1c	C
Tadley (Franklin Avenue)	44	A
Thatcham (Broadway)	44	B
	1a	D
Thatcham (Northway)	1a	D
Thatcham (The Moors)	1c	C
Theale	44+	A
West Berkshire Community Hospital	1a	D
	1c	C

Notes

Bus routes 44 operates a limited service on Mondays to Fridays only.
Bus routes 1a and 1c operate Mondays to Saturdays.
Bus route 1 (jet black) operates a frequent daily service from Thatcham Broadway.
For bus times and the latest bus service information, please contact Traveline on 0871 200 22 33.
Direct trains operate to this destination from this station.
It's approximately 25 minutes walk from Thatcham station to Thatcham Broadway (see maps) or pre-book a taxi (5 minutes journey time).
+ To this destination bus route 44 operates one bus on Mondays and Wednesdays only, please check the timetable for times.

Taxis

Thatcham station has no taxi rank or cab office. Advance booking is essential, please consider using the following local operators: (Inclusion of this number doesn't represent any endorsement of the taxi firm)

Cabco
01635 33333

Simon Boys Taxi Service
07786 511 099

Williams Taxis
01635 869 541

Further information about all onward travel

Local Cycle Info	National Cycle Info	Bus Times	NextBuses	PlusBus
westberks.gov.uk For more information about cycle routes.	sustrans.org.uk Sustrans is the UK's leading sustainable transport charity.	See timetable displays at bus stops.  www.traveline.info 0871 200 22 33 calls cost 15p per minute plus your phone company's access charge	 Find the bus times for your stop. Search for a bus stop by entering a postcode, street & town or a stop name & town.	 plusbus.info A discount price 'bus pass' that you buy with your train ticket. It gives you unlimited bus travel around your chosen town, on participating buses.

National Rail Enquiries

Online	NRE App	Social Media	Alert Me	Contact Centre	PlusBike
nationalrail.co.uk	Free National Rail Enquiries app for iOS and Android	 facebook.com/nationalrailenq  @nationalrailenq	You can sign up to Alert Me messages on the National Rail Enquiries website where you can receive train and platform notifications directly to your smart phone. nationalrail.co.uk/alertme	03457 48 49 50 Calls cost no more than calls to geographic numbers (01 or 02) and may be recorded.	nationalrail.co.uk/plusbike For more information.

GWR | Great Western Railway



National Rail
Britain's train companies working together



This poster shows details of popular destinations and main, frequent bus routes. Additional services may run, so please check with Traveline or see posters at local bus stops. Whilst considerable care has been taken to ensure the information contained on this poster is correct and accurate, National Rail cannot accept responsibility for any loss or inconvenience caused by any errors or omissions, or for loss, damage, injury or inconvenience relating to the cancellation, alteration, delay or diversion of a service. For any feedback, please e-mail comments@onwardtravelposters.com

Scan this code with your mobile for full station information.