



# Newton Abbot Station

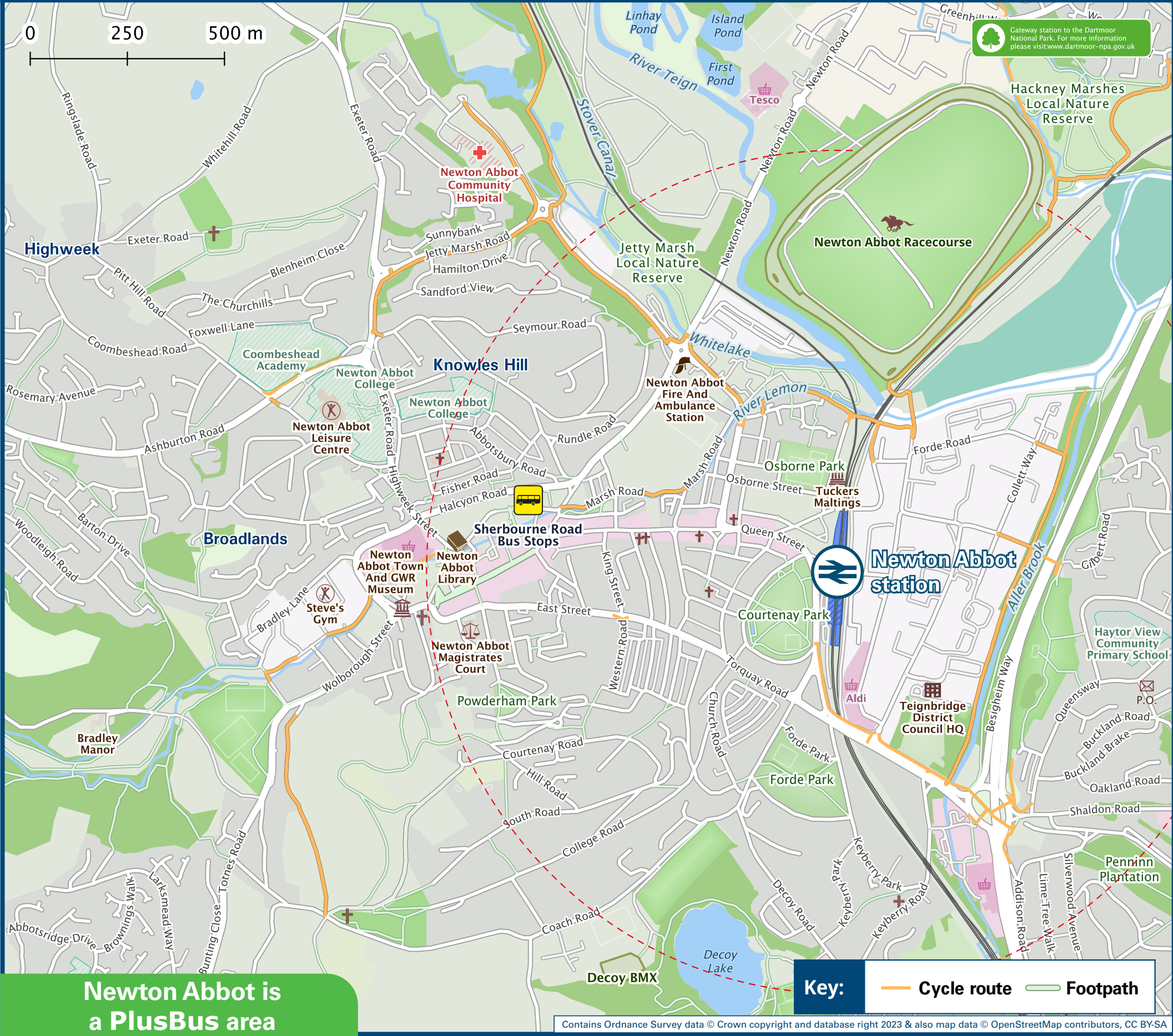
## Onward Travel Information

### Buses and Taxis



Rail replacement buses/coaches will depart from the front of the station

### Local area map



**PlusBus** is a discount price 'bus pass' that you buy with your train ticket. It gives you unlimited bus travel around your chosen town, on participating buses. Visit [www.plusbus.info](http://www.plusbus.info)

### Main destinations by bus



DESTINATION	BUS ROUTES	BUS STOP	DESTINATION	BUS ROUTES	BUS STOP	DESTINATION	BUS ROUTES	BUS STOP
Abbotskerswell	7, 177	Sherborne Rd #	Highweek	77A*	J	Teignmouth	174	J
Aller Park	174	K	Ipplepen	88A	Sherborne Rd #	2, 184~	Sherborne Rd #	
Ashburton	53	Sherborne Rd #	Kingskerswell	7, 177	Sherborne Rd #	174	K	
Bishopsteignton	88	Sherborne Rd #	Kingsteignton	12, 174	K	53	Sherborne Rd #	
Bovey Tracey	174	J	Littlehempston	53	Sherborne Rd #	12, 174	K	
Brixham	2	Sherborne Rd #	Moorland Reach	174	J	53	Sherborne Rd #	
Buckfastleigh (& Buckfast Abbey)	39	Sherborne Rd #	Newtake Estate (Twickenham Road)	2, 7, 179, 182, 184~	Sherborne Rd #	12	K	
Buckland Estate (Drake Road)	12	K	Newton Abbot Community Hospital	75	K	7, 88, 177	Sherborne Rd #	
Cemetery Cross (Ogwell Cross)	88	Sherborne Rd #	Newton Abbot Racecourse	75	J			
Chudleigh	77, 77A*	K	Newton Abbot Town Centre #	Take a taxi or it's a 15 minute walk from this Station (see Local area map) 2, 7, 179, 182, 184~	Sherborne Rd #			
Chudleigh Knighton	7, 174, 177	Sherborne Rd #	Paignton (Centre)	Take a taxi or it's a 10 minute walk from this Station (see Local area map) 12, 75, 77, 77A*, 174	J			
Dawlish	182	Sherborne Rd #	Rydon Estate	12	K			
Denbury	182	Sherborne Rd #	Shiphay	2, 7, 53	Sherborne Rd #			
East Ogwell	2	Sherborne Rd #		12	K			
Edginswell (Scotts Bridge)	176	Sherborne Rd #		53	Sherborne Rd #			
Heathfield	174	Sherborne Rd #						
Hele Park	12	K						
	39	Sherborne Rd #						
	77	J						

### Taxis

Newton Abbot station is served by a taxi rank or a cab office. Check availability before travelling, and pre-book if necessary. Please consider using the following local operators: (Inclusion of this number doesn't represent any endorsement of the taxi firm)

**Newton Abbot Taxis**  
01626 440 430

**Gems Taxi**  
01626 201 010

**Delta Taxis**  
01626 444 444

### Further information about all onward travel

Local Cycle Info	National Cycle Info	Bus Times	NextBuses	PlusBus
<a href="http://teignbridge.gov.uk">teignbridge.gov.uk</a> For more information about cycle routes.	<a href="http://sustrans.org.uk">sustrans.org.uk</a> Sustrans is the UK's leading sustainable transport charity.	See timetable displays at bus stops. <a href="http://www.traveline.info">www.traveline.info</a> 0871 200 22 33 calls cost 10p per minute plus your phone company's access charge	<a href="http://www.nextbuses.com">www.nextbuses.com</a> Find the bus times for your stop. Search for a bus stop by entering a postcode, street & town or a stop name & town.	<a href="http://plusbus.info">plusbus.info</a> A discount price 'bus pass' that you buy with your train ticket. It gives you unlimited bus travel around your chosen town, on participating buses.

### National Rail Enquiries

Online	NRE App	Social Media	Alert Me	Contact Centre	PlusBike
<a href="http://nationalrail.co.uk">nationalrail.co.uk</a>	<b>Free National Rail Enquiries app</b> for iOS and Android	<a href="https://facebook.com/nationalrailenq">facebook.com/nationalrailenq</a> @nationalrailenq	You can sign up to Alert Me messages on the National Rail Enquiries website where you can receive train and platform notifications directly to your smart phone. <a href="http://nationalrail.co.uk/alertme">nationalrail.co.uk/alertme</a>	<b>03457 48 49 50</b> Calls cost no more than calls to geographic numbers (01 or 02) and may be recorded.	<b>nationalrail.co.uk/plusbike</b> For more information.



**National Rail**  
Britain's train companies working together



This poster shows details of popular destinations and main, frequent bus routes. Additional services may run, so please check with Traveline or see posters at local bus stops. Whilst considerable care has been taken to ensure the information contained on this poster is correct and accurate, National Rail cannot accept responsibility for any loss or inconvenience caused by any errors or omissions, or for loss, damage, injury or inconvenience relating to the cancellation, alteration, delay or diversion of a service. For any feedback, please e-mail [comments@onwardtravelposters.com](mailto:comments@onwardtravelposters.com)

Scan this code with your mobile for full station information.