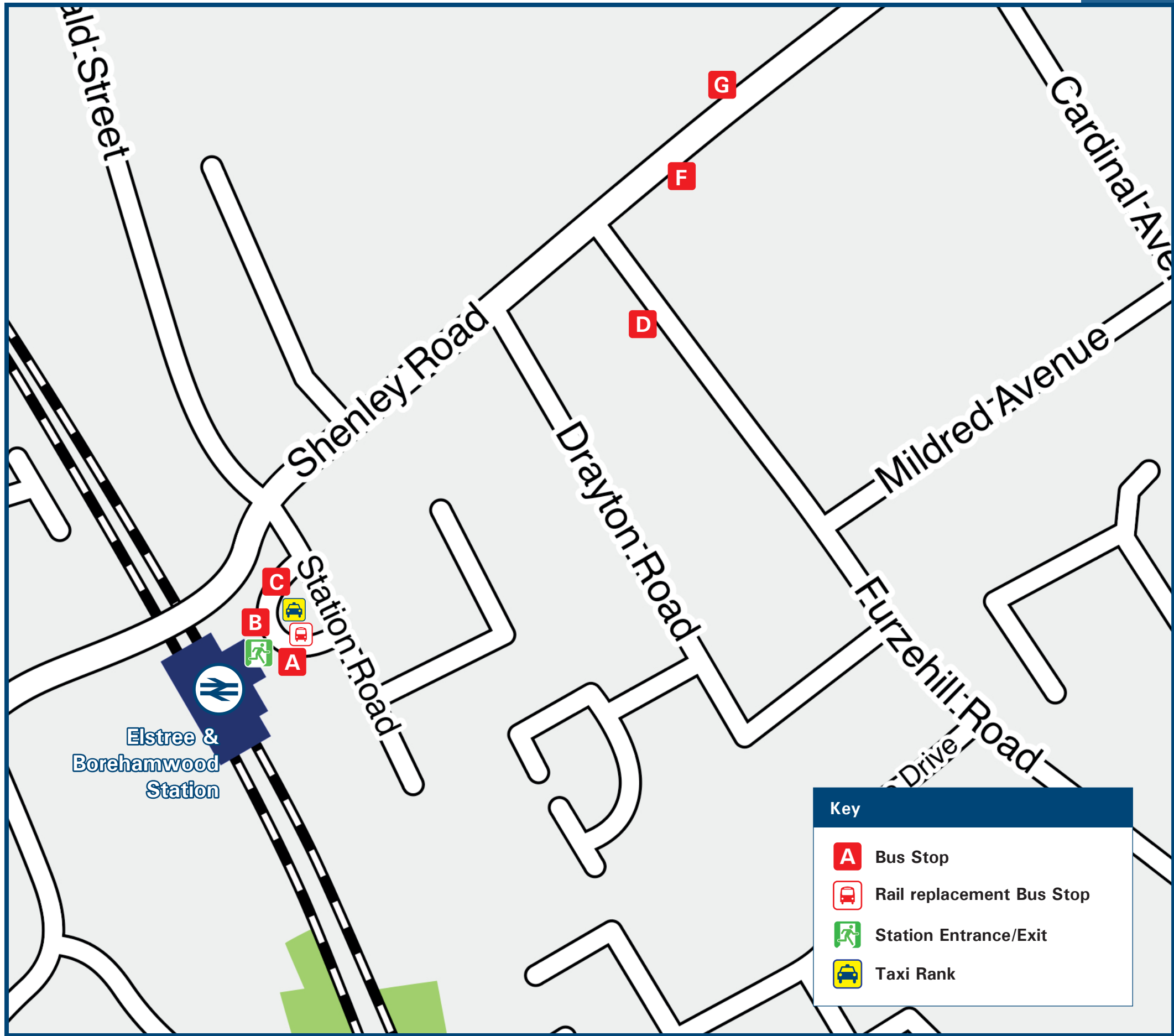




# Elstree & Borehamwood Station

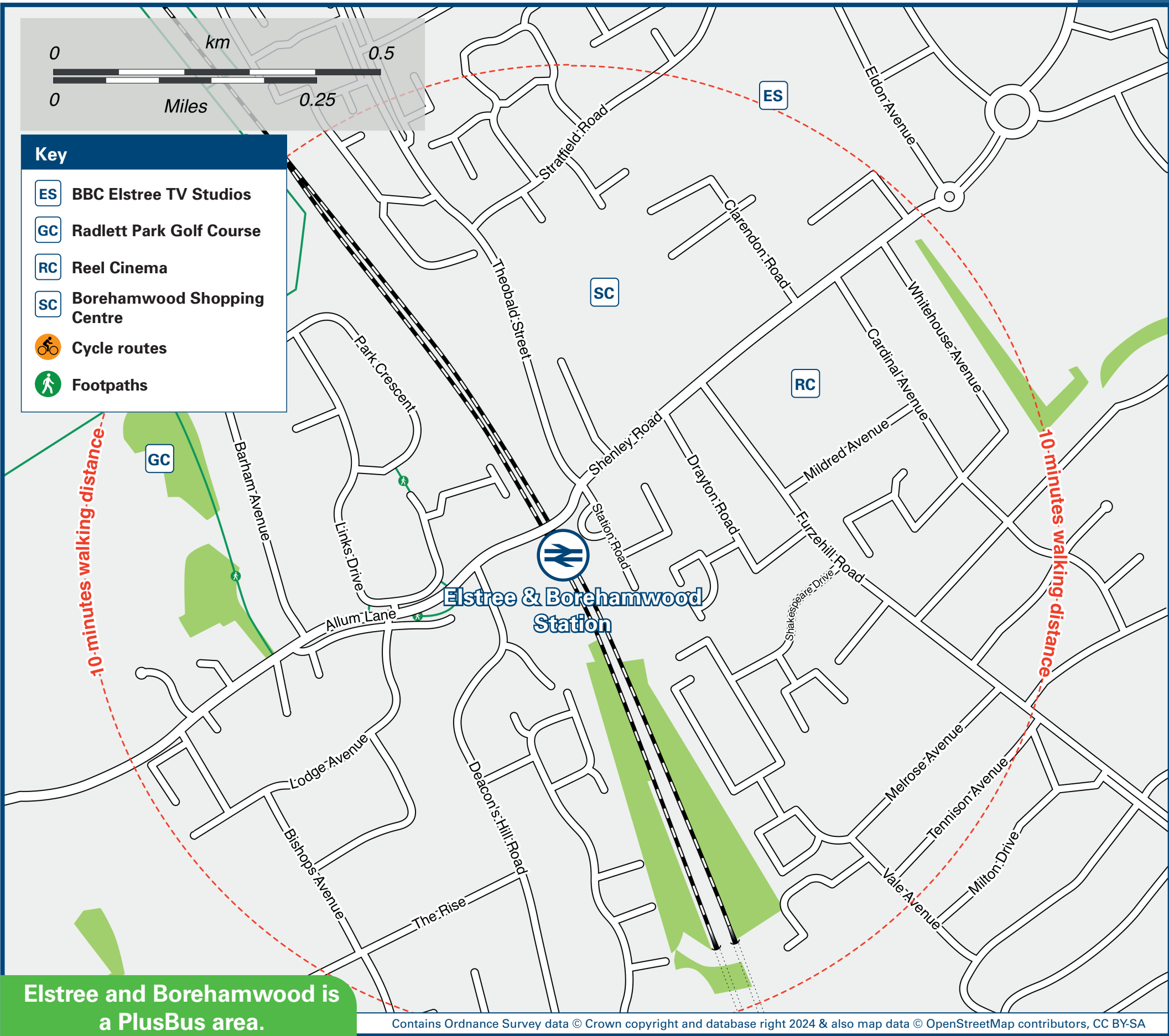
## Onward Travel Information

### Buses and Taxis



Rail replacement bus pick-up point is at the front of the station.

### Local area map



Elstree and Borehamwood is a PlusBus area.



PlusBus is a discount price 'bus pass' that you buy with your train ticket. It gives you unlimited bus travel around your chosen town, on participating buses. Visit [www.plusbus.info](http://www.plusbus.info)

### Main destinations by bus

(Data correct at May 2024)



DESTINATION	BUS ROUTES	BUS STOP
Arkley	107	A
Barnet	107	A
Barnet Gate	107, 292 644#	A F
Borehamwood Industrial Park	107, 361	A
Borehamwood (Rossington Avenue)	292	C
Bricket Wood	361	C
Burnt Oak	292 644#	A F
Bushey	306	B
Bushey Heath	306	B
Chipping Barnet	107	A
Chiswell Green	361	C
Colindale	292	A
Colney Street	601	G
Edgware Community Hospital	292 644#	A F
Edgware Underground Station	107 292	B A

DESTINATION	BUS ROUTES	BUS STOP
Elstree Studios	10 - 15 minutes walk from this station - see Local area map 107, 292, 306, B3	A
Elstree Village (Watling Court)	107, 306	B
Hatfield Business Park	601, 644#	G
Hatfield (The Forum)	644#	G
Hatfield (The Galleria)	644#	G
High Barnet (High Street)	107	A
High Barnet Hospital	107	A
How Wood	361	C
London Colney	357	B
Mill Hill (Apex Corner)	292	A
Napsbury	357	B
New Barnet	107	A
Park Street Station	601	G
Queensbury Station	644#	F
Radlett	601	G
Shenley	357	B

DESTINATION	BUS ROUTES	BUS STOP
St Albans	361 601	C G
Stanmore (Royal National Orthopaedic Hospital)	357 107	B B
Watford (High Street Station)	306	B
Watford Town Centre (High Street)	306	B
Well End	361	A
Welwyn Garden City	601 (Mon-Fri only)*	G

#### Notes

- PlusBus destination, please see below for details.
- Bus routes 107, 292, 306 and 357 run daily, Mondays to Sundays.
- Bus routes 361 and 601 run Mondays to Saturdays only. No Sunday service.
- Direct trains operate to this destination from this station.
- Change here for connecting National Rail trains.
- Change here for connecting London Overground trains.
- Change here for London Underground Northern Line trains.
- \* Alternatively take the train to St Albans City and change for bus 300, 301, 653 or 724 to this destination.
- # Bus route 644 runs a limited Mondays to Fridays service, only.

### Taxis

Elstree and Borehamwood station is served by a taxi rank or a cab office. Check availability before travelling, and pre-book if necessary. Please consider the following local operators: (Inclusion of this number doesn't represent any endorsement of the taxi firm)

ABA Cars  
020 8386 7777

Herts Cars Borehamwood  
020 8953 6166

#### Further information about all onward travel

##### Local Cycle Info

[www.hertsmere.gov.uk](http://www.hertsmere.gov.uk)  
For more information about cycle routes.

##### National Cycle Info

[sustrans.org.uk](http://sustrans.org.uk)  
Sustrans is the UK's leading sustainable transport charity.

##### Bus Times

See timetable displays at bus stops.  
[www.traveline.info](http://www.traveline.info)  
0871 200 22 33  
call cost 15p per minute plus your phone company's access charge

##### NextBuses

Find the bus times for your stop.  
Search for a bus stop by entering a postcode, street & town or a stop name & town.

##### PlusBus

[plusbus.info](http://plusbus.info)  
A discount price 'bus pass' that you buy with your train ticket. It gives you unlimited bus travel around your chosen town, on participating buses.

#### National Rail Enquiries

Online	NRE App	Social Media	Alert Me	Contact Centre	PlusBike
<a href="http://nationalrail.co.uk">nationalrail.co.uk</a>	Free National Rail Enquiries app for iOS and Android	<a href="https://www.facebook.com/nationalrailenq">facebook.com/nationalrailenq</a> <a href="https://twitter.com/nationalrailenq">@nationalrailenq</a>	You can sign up to Alert Me messages on the National Rail Enquiries website where you can receive train and platform notifications directly to your smart phone. <a href="http://nationalrail.co.uk/alertme">nationalrail.co.uk/alertme</a>	03457 48 49 50 Calls cost no more than calls to geographic numbers (01 or 02) and may be recorded.	<a href="http://nationalrail.co.uk/plusbike">nationalrail.co.uk/plusbike</a> For more information.

ThamesLink



National Rail  
Britain's train companies working together

