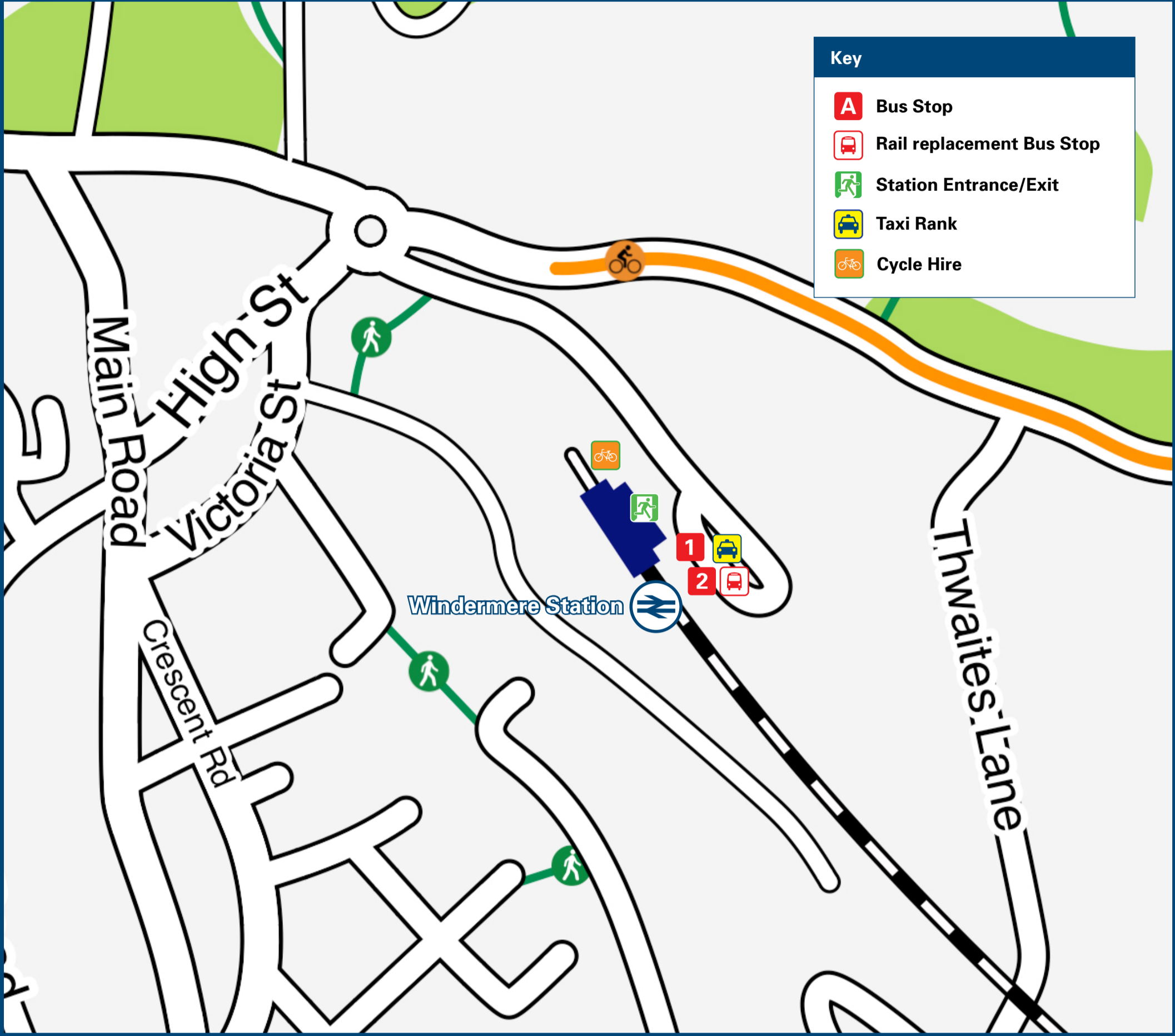




Windermere Station

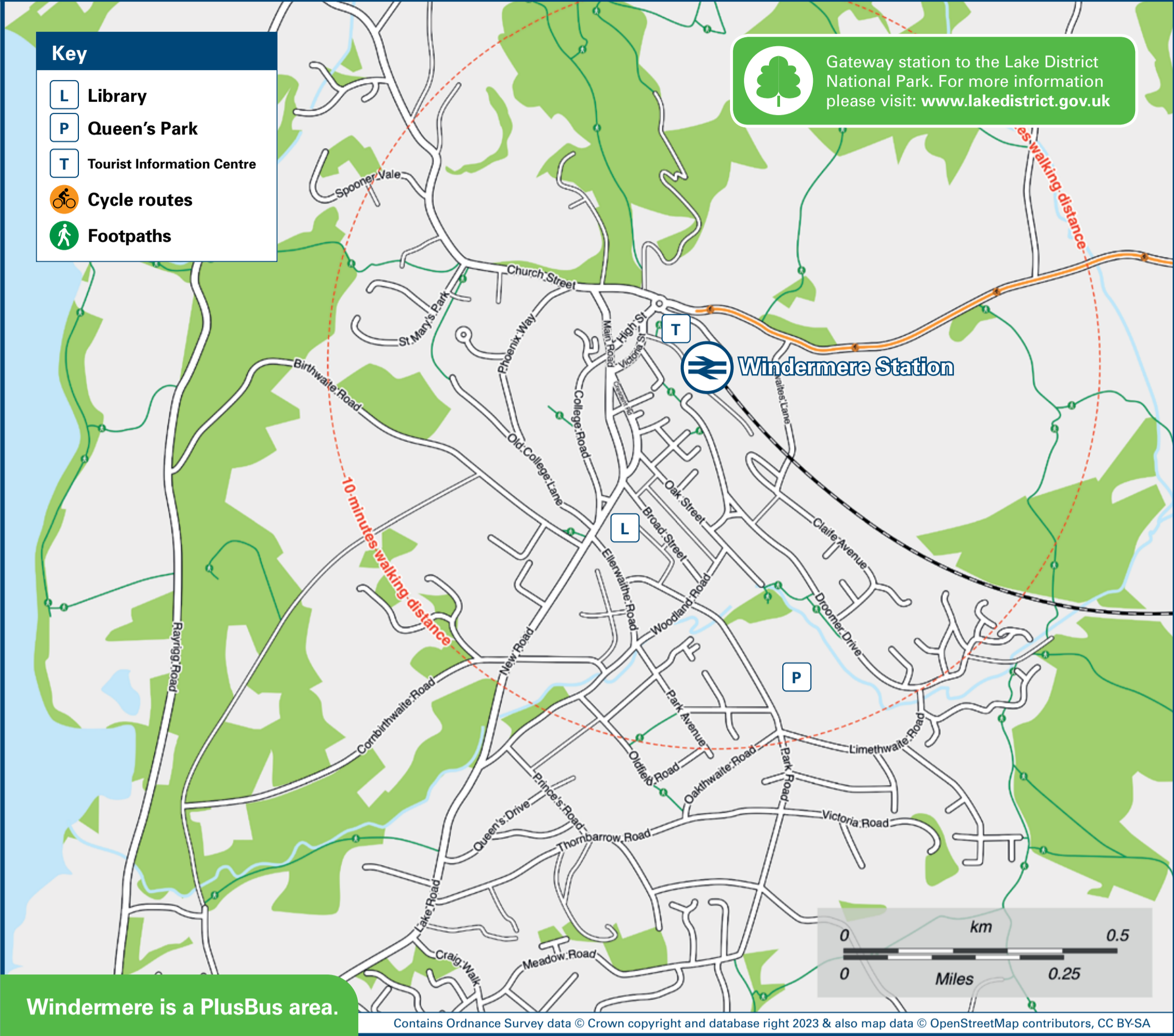
Onward Travel Information

Buses, Taxis and Cycle Hire



Rail replacement buses will depart from the station car park

Local area map



PlusBus is a discount price 'bus pass' that you buy with your train ticket. It gives you unlimited bus travel around your chosen town, on participating buses. Visit www.plusbus.info

Main destinations by bus

(Data correct at December 2023)



DESTINATION	BUS ROUTES	BUS STOP
● Ambleside	505, 516~, 555, 599	1
Barrow-in-Furness	6	1
● Bowness-on-Windermere (Pier)	6, 508*, 555, 599, 755**	1
● Bowness-on-Windermere (Town)	597#	2
● Brockhole National Park Centre	505, 516~, 555, 599	1
Conistون	505	1
Dalton-in-Furness	6	1
Dungeon Ghyll (Langdale)	516~	1
Fell Foot Country Park	6	1
Glenridding	508*	1
● Grasmere	555, 599	1
Haverthwaite (for Lakeside & Haverthwaite Railway)	6	1

DESTINATION	BUS ROUTES	BUS STOP
Hawkshead	505	1
● Heathwaite	597#	2
Ings	505**, 516~, 555, 599, 755**	1
Kendal	6, 505**, 516~, 555, 599, 755**	1
Keswick	555	1
Newby Bridge	6	1
Patterdale	508*	1
Penrith	508*	1
● Rydal	555, 599	1
Staveley	555	1
Troutbeck	508*	1
● Troutbeck Bridge	505, 508*, 516~, 555, 599	1

DESTINATION	BUS ROUTES	BUS STOP
Ullswater	508*	1
Ulverston	6	1
● Waterhead	505, 516~, 555, 599	1

Notes

- **PlusBus** destination, please see below for details. Bus routes 6, 505, 555, 599 and 755 run daily services. Plusbus tickets are valid only within the Windermere Plusbus zone on Stagecoach buses
- ☎ Direct trains operate to this destination from this station
- * To this destination bus route 508 operate daily from Easter until late October, only.
- ** Bus routes 505 and 755 operate limited daily services.
- # Bus route 597 runs on Tuesdays and Thursdays, only.
- ~ Bus route 516 operates limited Mondays to Fridays services, only.
- Cycle hire Country Lanes Cycle Centre tel: 015394 445 44 or www.countrylaneslakedistrict.co.uk/windermere_cycle_hire.htm
- National Park The Lake District National Park; www.lakedistrict.gov.uk/

Taxis

Windermere station is served by a taxi rank or a cab office. Check availability before travelling, and pre-book if necessary. Please consider using the following local operators: (Inclusion of this number doesn't represent any endorsement of the taxi firm)

Ace Taxi Windermere
01539 445 445

Lakeside Private Hire
01539 488 888

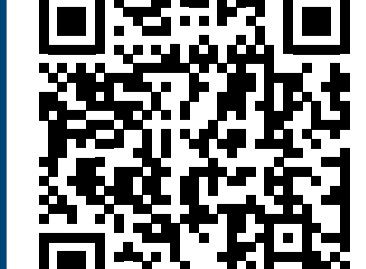
Heaths Taxis
01539 448 946

Further information about all onward travel

Local Cycle Info www.westmorlandandfurness.gov.uk/parking-streets-and-transport/active-travel For more information about cycle routes.	National Cycle Info sustrans.org.uk Sustrans is the UK's leading sustainable transport charity.	Bus Times See timetable displays at bus stops. www.traveline.info 0871 200 22 33 calls cost 15p per minute plus your phone company's access charge	NextBuses Find the bus times for your stop. Search for a bus stop by entering a postcode, street & town or a stop name & town.	PlusBus plusbus.info A discount price 'bus pass' that you buy with your train ticket. It gives you unlimited bus travel around your chosen town, on participating buses.
---	---	---	--	--

National Rail Enquiries

Online nationalrail.co.uk	NRE App Free National Rail Enquiries app for iOS and Android	Social Media facebook.com/nationalrailenq @nationalrailenq	Alert Me You can sign up to Alert Me messages on the National Rail Enquiries website where you can receive train and platform notifications directly to your smart phone. nationalrail.co.uk/alertme	Contact Centre 03457 48 49 50 Calls cost no more than calls to geographic numbers (01 or 02) and may be recorded.	PlusBike nationalrail.co.uk/plusbike For more information.
---	--	--	---	--	--



This poster shows details of popular destinations and main, frequent bus routes. Additional services may run, so please check with Traveline or see posters at local bus stops. Whilst considerable care has been taken to ensure the information contained on this poster is correct and accurate, National Rail cannot accept responsibility for any loss or inconvenience caused by any errors or omissions, or for loss, damage, injury or inconvenience relating to the cancellation, alteration, delay or diversion of a service. For any feedback, please e-mail comments@onwardtravelposters.com

Scan this code with your mobile for full station information.