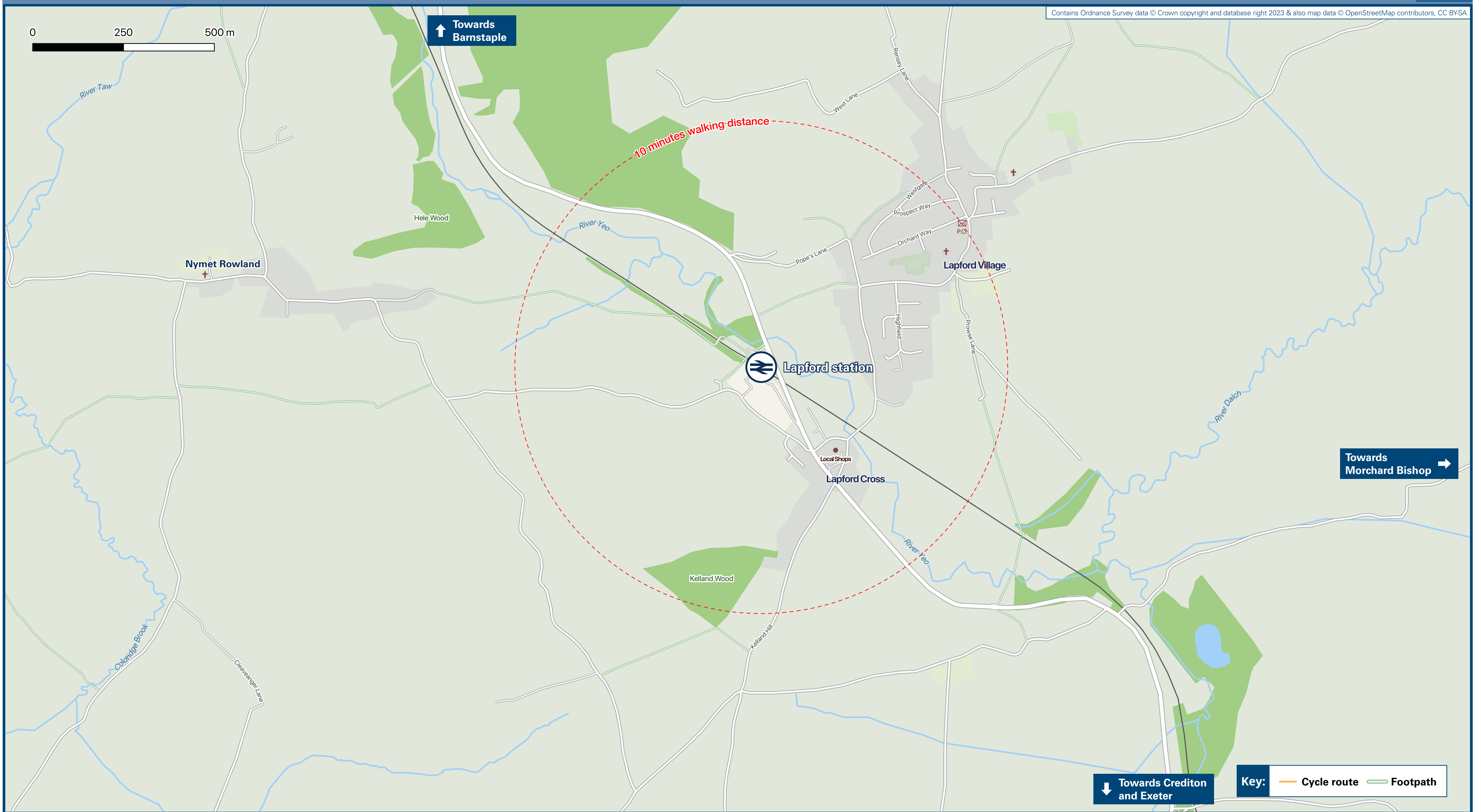




# Lapford Station

# Onward Travel Information

## Local area map



## Buses



Rail replacement buses/coaches will depart from the bus stop on A377 at the junction with Kelland Hill (towards Barnstaple), or at the bus stop on A377 at the junction with Popes Lane (towards Exeter).

## Main destinations by bus

(Data correct at November 2023)

DESTINATION	BUS ROUTES	BUS STOP
Chawleigh	5C	C
Chulmeigh	5C	C
Copplestone	5C	B
Cowley Bridge	5C	B
Crediton	5C	B
Duryard	5C	B
Exeter City Centre	5C	B
Half Moon Village	5C	B
Lapford Village	10 - 15 minutes walk (see Local map)	
	5C	C
Morchard Road	5C	B
Newton St Cyres	5C	B

**Notes** Bus route 5C operates Mondays to Saturdays, only. No Sunday service.  
Direct trains operate from this station to this destination.

## Taxis

Lapford station has no taxi rank or cab office. Advance booking is essential, please consider using the following local operators: (Inclusion of this number doesn't represent any endorsement of the taxi firm)

**Smartway Taxi**  
01837 880 055

**White Swan Taxis**  
07928 115 421

**Crediton Cars Taxi**  
01363 777 714

## Further information about all onward travel

<b>Local Cycle Info</b> middevon.gov.uk For more information about cycle routes.	<b>National Cycle Info</b> sustrans.org.uk Sustrans is the UK's leading sustainable transport charity.	<b>Bus Times</b> See timetable displays at bus stops. www.traveline.info 0871 200 22 33 calls cost 10p per minute plus your phone company's access charge	<b>NextBuses .mobi</b> Find the bus times for your stop. Search for a bus stop by entering a postcode, street & town or a stop name & town.	<b>PlusBus</b> plusbus.info A discount price 'bus pass' that you buy with your train ticket. It gives you unlimited bus travel around your chosen town, on participating buses.
--	--	---	---	---

## National Rail Enquiries

<b>Online</b> nationalrail.co.uk	<b>NRE App</b> Free National Rail Enquiries app for iOS and Android	<b>Social Media</b> facebook.com/nationalrailenq @nationalrailenq	<b>Alert Me</b> You can sign up to Alert Me messages on the National Rail Enquiries website where you can receive train and platform notifications directly to your smart phone. nationalrail.co.uk/alertme	<b>Contact Centre</b> 03457 48 49 50 Calls cost no more than calls to geographic numbers (01 or 02) and may be recorded.	<b>PlusBike</b> nationalrail.co.uk/plusbike For more information.
-------------------------------------	--	---	---	--	---



This poster shows details of popular destinations and main, frequent bus routes. Additional services may run, so please check with Traveline or see posters at local bus stops. Whilst considerable care has been taken to ensure the information contained on this poster is correct and accurate, National Rail cannot accept responsibility for any loss or inconvenience caused by any errors or omissions, or for loss, damage, injury or inconvenience relating to the cancellation, alteration, delay or diversion of a service. For any feedback, please e-mail comments@onwardtravelposters.com

Scan this code with your mobile for full station information.