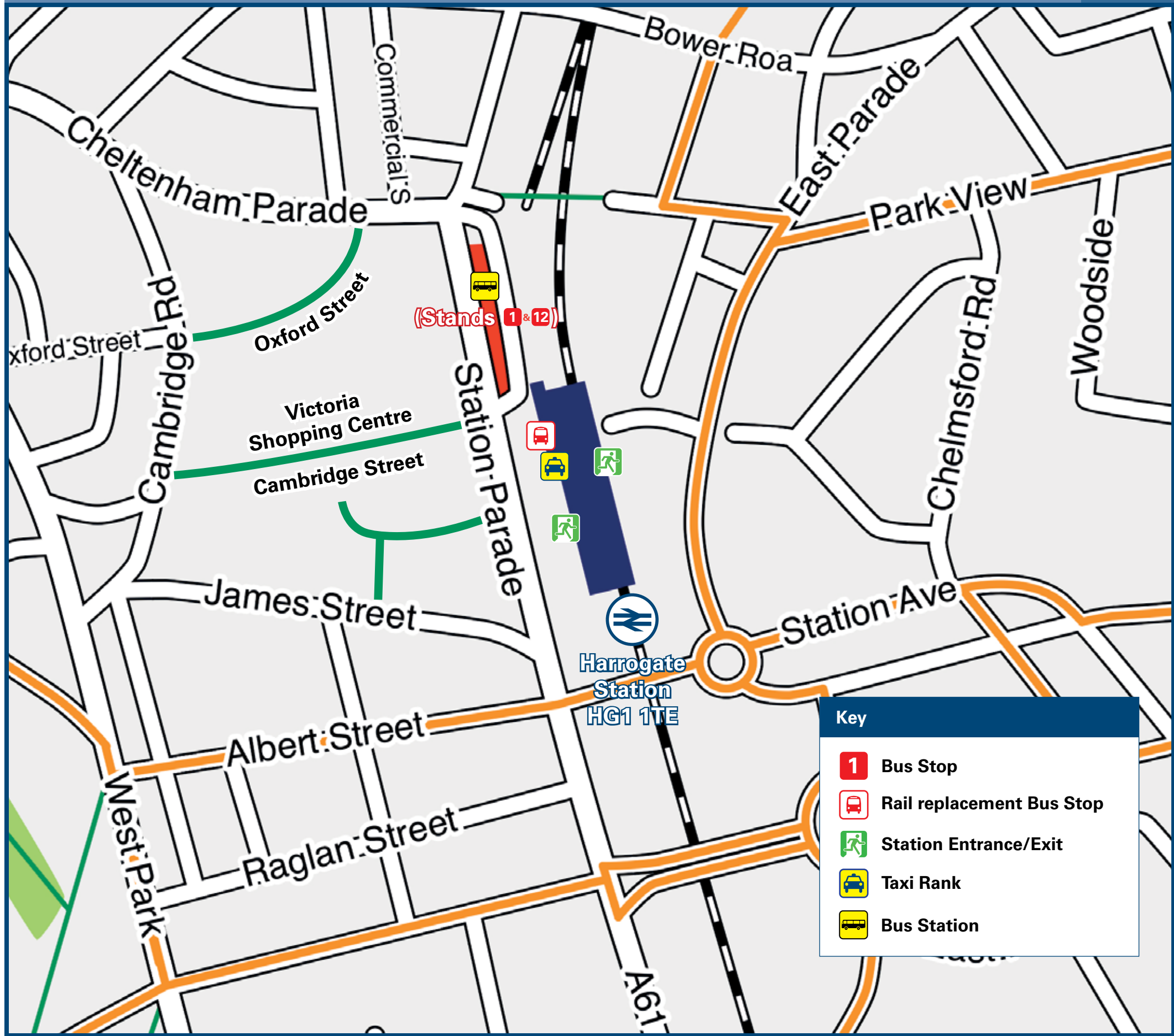




Harrogate Station

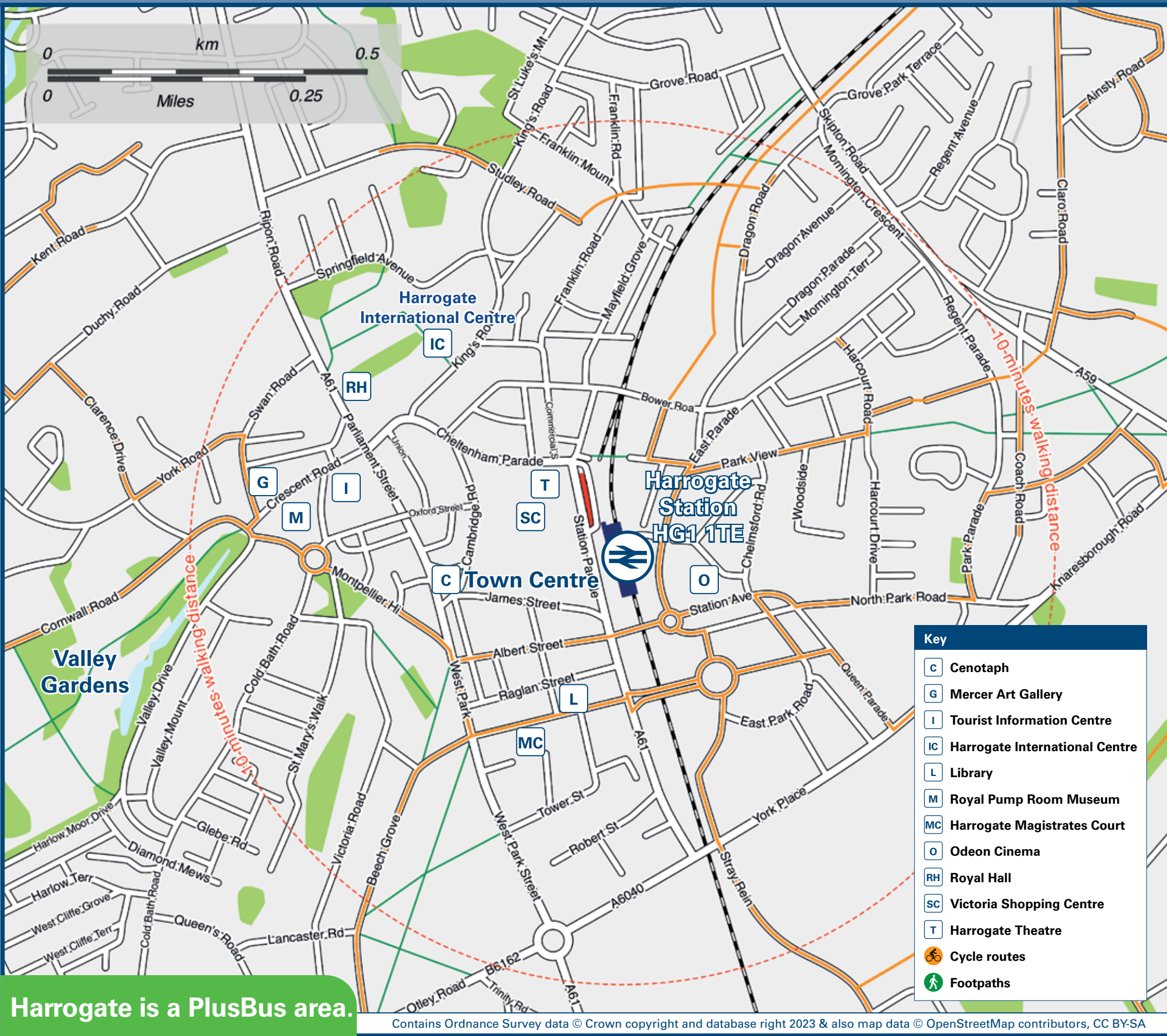
Onward Travel Information

Buses and Taxis



Rail replacement buses depart from the station car park.

Local area map



Harrogate is a PlusBus area.



PlusBus is a discount price 'bus pass' that you buy with your train ticket. It gives you unlimited bus travel around your chosen town, on participating buses. Visit www.plusbus.info

Main destinations by bus

(Data correct at December 2023)



DESTINATION	BUS ROUTES	BUS STOP
Beckwith Knowle	6, X6*	Bus Stn Stand 3
Bilton	2	Bus Stn Stand 4
Birstwith	24	Bus Stn Stand 2
Blubberhouses	59+	Bus Stn Stand 2
Bolton Abbey	59+	Bus Stn Stand 2
Boston Spa	7, X70	Bus Stn Stand 9
Bradford	A2	Bus Stn Stand 6
Bramham	7	Bus Stn Stand 9
Calcutt / Forest Moor	8	Bus Stn Stand 2
Clifford	7	Bus Stn Stand 9
Dacre Banks	24	Bus Stn Stand 2
Darley	24	Bus Stn Stand 2
Follifoot	7, X70	Bus Stn Stand 9
Glasshouses	24	Bus Stn Stand 2
Hampsthwaite	24	Bus Stn Stand 2
Harewood (for Harewood House)	36#	Bus Stn Stand 7, 10
Harrogate Town area -		
Bachelor Gardens	2	Bus Stn Stand 4
Crossways	8	Bus Stn Stand 2
Dene Park	2	Bus Stn Stand 4
Duchy Road	X12*	Bus Stn Stand 2
Great Yorkshire Showground (Woodlands)	7, X70	Bus Stn Stand 9
Harlow Hill	6, X6*	Bus Stn Stand 3
Harrogate District Hospital	1, 1A, 1B, 1C, 1D, 36##	Bus Stn Stand 10
Jennyfield	7, X70	Bus Stn Stand 9
	3	Bus Stn Stand 5
	59+	Bus Stn Stand 2
	2	Bus Stn Stand 4
	24	Bus Stn Stand 2
	36#	Bus Stn Stand 8, 10
Oatlands (Leeds Road)	36#	Bus Stn Stand 7, 10
	A2, X52	Bus Stn Stand 6

DESTINATION	BUS ROUTES	BUS STOP
Pannal	36#	Bus Stn Stand 7
Pannal Ash	A2, X52	Bus Stn Stand 6
	6, X6*	Bus Stn Stand 3
Starbeck	1, 1A, 1B, 1C, 1D, 36##	Bus Stn Stand 10
	3	Bus Stn Stand 5
The Hydro (Swimming Pool)	24, 59+	Bus Stn Stand 2
	36#	Bus Stn Stand 8, 10
Wedderburn	1, 1A, 1B, 1C, 1D, 36##	Bus Stn Stand 10
Woodlands	7, X70	Bus Stn Stand 9
	8	Bus Stn Stand 2
Yorkshire Event Centre	7, X70	Bus Stn Stand 9
Kettlesing	59+	Bus Stn Stand 2
	24	Bus Stn Stand 2
Killinghall	36#	Bus Stn Stand 8, 10
Kirk Deighton	8	Bus Stn Stand 2
Knaresborough (Aspin Lane)	1A	Bus Stn Stand 10
Knresborough (Carmires)	1C	Bus Stn Stand 10
Knaresborough (Eastfield)	1B	Bus Stn Stand 10
Knaresborough (The Pastures)	1D	Bus Stn Stand 10
Knaresborough (Town Centre)	1A, 1B, 1C, 1D, 8	Bus Stn Stand 10
Leeds Bradford International Airport	A2	Bus Stn Stand 6
Low Laithe	24	Bus Stn Stand 2
Moortown	36#	Bus Stn Stand 7, 10
Otley	X52	Bus Stn Stand 6
Pateley Bridge	24	Bus Stn Stand 6
Plumpton Rocks	7, X70	Bus Stn Stand 9
Pool	A2, X52	Bus Stn Stand 6
	36#	Bus Stn Stand 8, 10
Ripley	36#	Bus Stn Stand 8, 10
Ripon	36#	Bus Stn Stand 8, 10

DESTINATION	BUS ROUTES	BUS STOP
Rudding Holiday Park	7, X70	Bus Stn Stand 9
Skipton	59+	Bus Stn Stand 2
South Stainley	36#	Bus Stn Stand 8, 10
Spofoth (for Castle)	7, X70	Bus Stn Stand 9
Summerbridge	24	Bus Stn Stand 2
Thorp Arch (for HM Prison Wealstun)	7	Bus Stn Stand 9
Walton Corner	7	Bus Stn Stand 9
Wetherby	7, X70	Bus Stn Stand 9
	8	Bus Stn Stand 2
Yeadon	A2	Bus Stn Stand 6

Notes

- PlusBus destination, please see below for details.
- Bus routes 1, 1A, 1B, 1C, 1D, 2, 3, 6, 7, 24, 36 and A2 operate daily, Mondays to Sundays.
- Bus routes 8, X52 and X70 operate Mondays to Saturdays.
- Additional bus services operate into Nidderdale Area of Outstanding Natural Beauty and the Yorkshire Dales National Park during the summer months, mainly on Sundays and Bank Holidays.
- Visit www.dalesbus.org for full details of local bus services in the Dales.
- Direct trains operate to this destination from this station.
- Alight here for Embsay & Bolton Abbey Steam Railway, ring 01756 795 189 for talking timetables.
- # Bus route 36: Daytime buses depart from stand 7 towards Leeds and from stand 8 towards Ripon. Evening buses depart from stand 10.
- ## Bus route 36 operates to this destination evenings daily only.
- + Bus route 59 operates 4 daytime journeys on Saturdays only.
- * Bus routes X6 and X12 operate Mondays to Fridays only.

Taxis

Harrogate is a major station where taxis are usually available on a rank. Advance booking is not normally necessary, unless arriving early in the morning or late at night. Operators who may accept bookings include: (Inclusion of this number doesn't represent any endorsement of the taxi firm)

Yellow Line Taxis
01423 521 531

Blueline
01423 530 830

Elite Taxis
01423 538 509.

Further information about all onward travel

Local Cycle Info

www.northyorks.gov.uk/roads-parking-and-travel/roads-and-pavements/cycle-lanes-and-routes
For more information about cycle routes.

National Cycle Info

sustrans.org.uk

Sustrans is the UK's leading sustainable transport charity.

Bus Times

See timetable displays at bus stops.



www.traveline.info

0871 200 22 33
call cost 12p per minute
plus your phone company's access charge

NextBuses

Find the bus times for your stop.
Search for a bus stop by entering a postcode, street & town or a stop name & town.

PlusBus

plusbus.info

A discount price 'bus pass' that you buy with your train ticket. It gives you unlimited bus travel around your chosen town, on participating buses.

National Rail Enquiries

Online

nationalrail.co.uk

NRE App

Free National Rail Enquiries app for iOS and Android

Social Media

facebook.com/nationalrailenq
@nationalrailenq

Alert Me

You can sign up to Alert Me messages on the National Rail Enquiries website where you can receive train and platform notifications directly to your smart phone.
nationalrail.co.uk/alertme

Contact Centre

03457 48 49 50
Calls cost no more than calls to geographic numbers (01 or 02) and may be recorded.

PlusBike

nationalrail.co.uk/plusbike
For more information.



NORTHERN



National Rail
Britain's train companies working together



This poster shows details of popular destinations and main, frequent bus routes. Additional services may run, so please check with Traveline or see posters at local bus stops. Whilst considerable care has been taken to ensure the information contained on this poster is correct and accurate, National Rail cannot accept responsibility for any loss or inconvenience caused by any errors or omissions, or for loss, damage, injury or inconvenience relating to the cancellation, alteration, delay or diversion of a service. For any feedback, please e-mail comments@onwardtravelposters.com

Scan this code with your mobile for full station information.