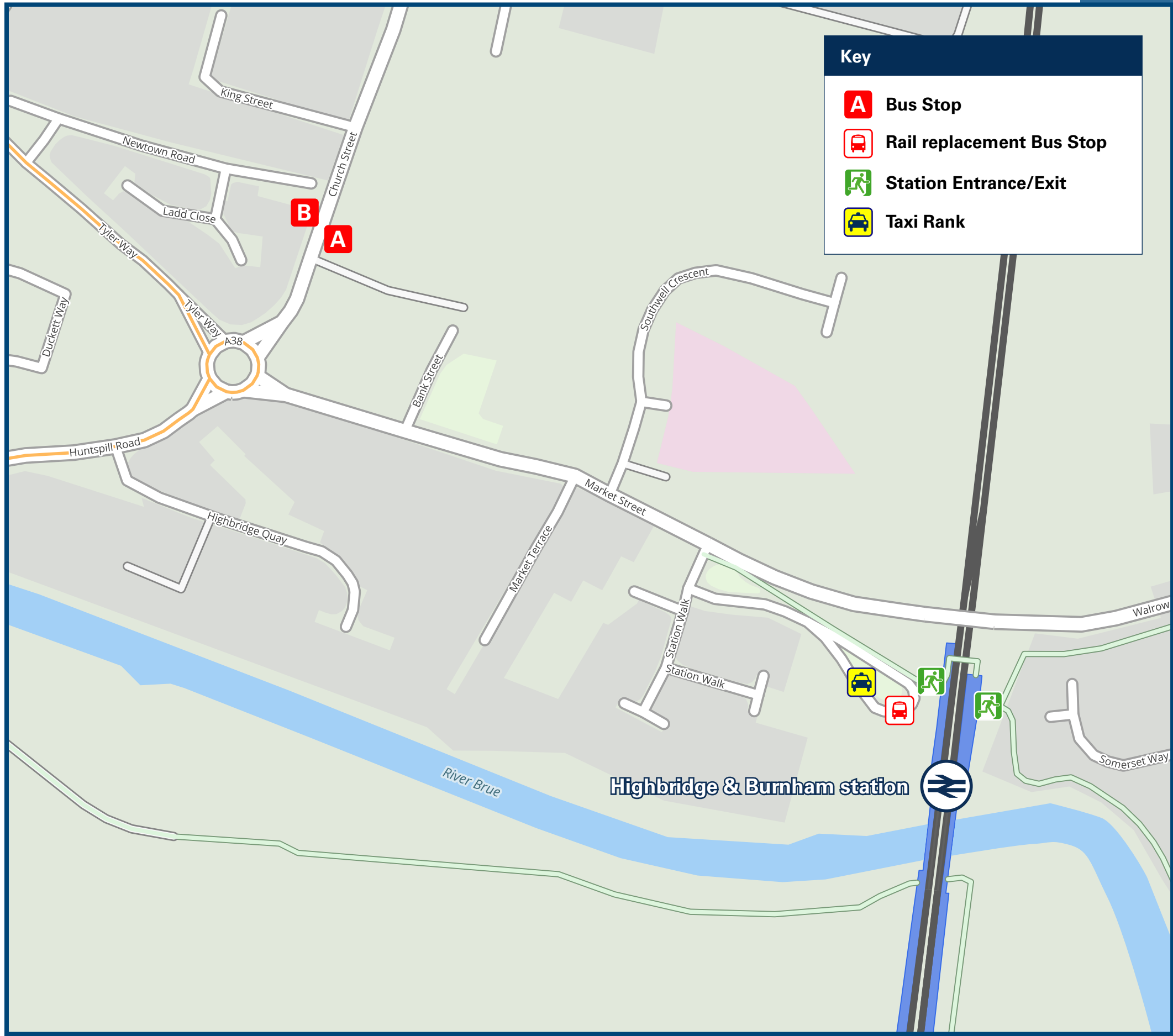




Highbridge & Burnham Station

Onward Travel Information

Buses and Taxis



Rail replacement buses/coaches will depart from the front of the station

Local area map



Main destinations by bus

(Data correct at January 2025)



DESTINATION	BUS ROUTES	BUS STOP	DESTINATION	BUS ROUTES	BUS STOP	DESTINATION	BUS ROUTES	BUS STOP
Alstone	21, 21A	A	Huntingspill	21, 21A	A	West Huntingspill	21, 21A	A
Bridgwater	21, 21A	A	North Petherton	21, 21A	A			
Burnham-on-Sea	21, 21A	B	Pawlett	21, 21A	A			
Dunball	21, 21A	A	Taunton	21, 21A	A			

Notes

Bus route 21 operates a daily service.
Bus route 21A operates a Mondays to Saturdays service, only. No Sunday service.
For bus times please see bus stop timetables or contact Traveline.
Direct trains operate to this destination from here

Taxis

Highbridge & Burnham station is served by a taxi rank or cab office. Check availability, and pre-book if necessary. Please consider using the following local operators: (Inclusion of this number doesn't represent any endorsement of the taxi firm)

Lydias Taxis
01278 794 479

Fairview Taxis
01278 794 545

Burnham and Highbridge Taxis
07544 111 002

Further information about all onward travel

Local Cycle Info	National Cycle Info	Bus Times	NextBuses	PlusBus
somerset.gov.uk For more information about cycle routes.	sustrans.org.uk Sustrans is the UK's leading sustainable transport charity.	See timetable displays at bus stops. www.traveline.info 0871 200 22 33 calls cost 15p per minute plus your phone company's access charge	Find the bus times for your stop. Search for a bus stop by entering a postcode, street & town or a stop name & town.	plusbus.info A discount price 'bus pass' that you buy with your train ticket. It gives you unlimited bus travel around your chosen town, on participating buses.

National Rail Enquiries

Online	NRE App	Social Media	Alert Me	Contact Centre	PlusBike
nationalrail.co.uk	Free National Rail Enquiries app for iOS and Android	facebook.com/nationalrailenq @nationalrailenq	You can sign up to Alert Me messages on the National Rail Enquiries website where you can receive train and platform notifications directly to your smart phone. nationalrail.co.uk/alertme	03457 48 49 50 Calls cost no more than calls to geographic numbers (01 or 02) and may be recorded.	nationalrail.co.uk/plusbike For more information.



National Rail
Britain's train companies working together



This poster shows details of popular destinations and main, frequent bus routes. Additional services may run, so please check with Traveline or see posters at local bus stops. Whilst considerable care has been taken to ensure the information contained on this poster is correct and accurate, National Rail cannot accept responsibility for any loss or inconvenience caused by any errors or omissions, or for loss, damage, injury or inconvenience relating to the cancellation, alteration, delay or diversion of a service. For any feedback, please e-mail comments@onwardtravelposters.com

Scan this code with your mobile for full station information.