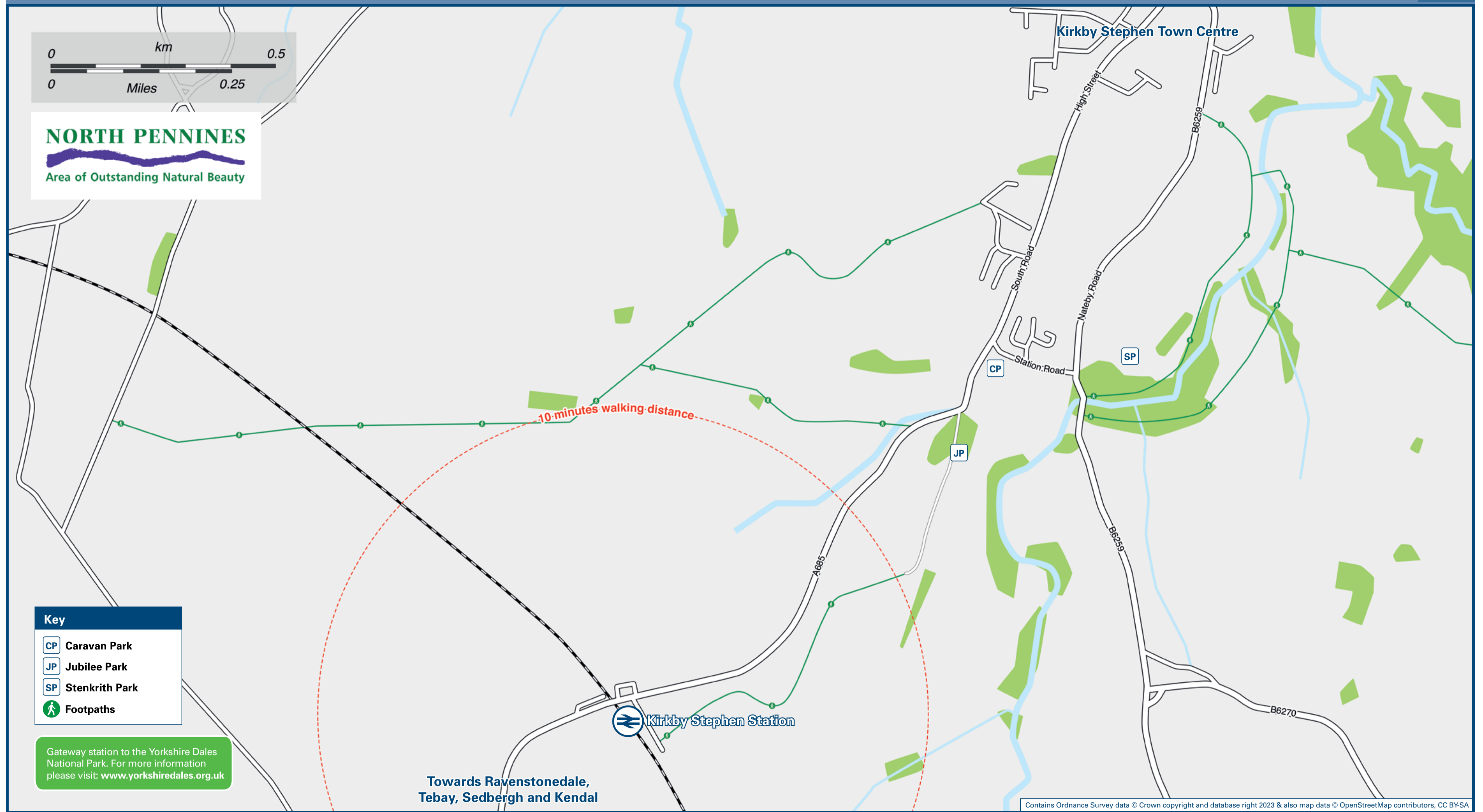




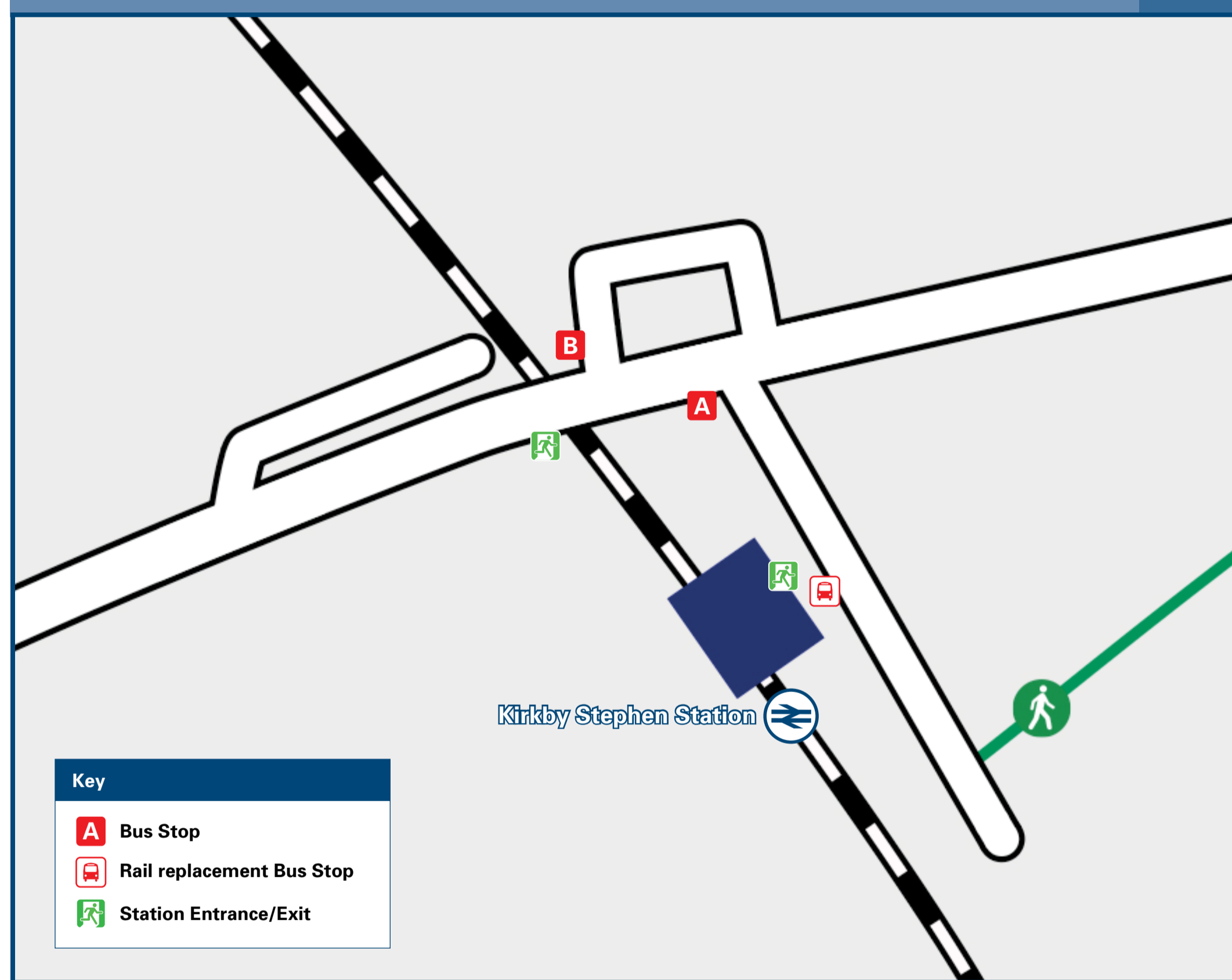
Kirkby Stephen Station

Onward Travel Information

Local area map



Station Map



Rail replacement buses will depart from the entrance to the station car park

Main destinations by bus

(Data correct at December 2023)

DESTINATION	BUS ROUTES	BUS STOP
Barnard Castle	572	B
Brough	S6, 571, 572	B
Cautley, Cross Keys	S5, S6	A
Kendal	S5, 571	A
Kirkby Stephen, Town Centre	S5, S6, 571, 572	B
Newbiggin-on-Lune	S5, 571	A
Ravenstonedale	S5, 571, 572	A
Sedbergh	S5, S6	A
Tebay	571	A

Notes

Kirkby Stephen town centre is approximately 1.5 miles from Kirkby Stephen Station. THERE IS A LIMITED BUS SERVICE SERVING KIRKBY STEPHEN STATION. Visit www.cumbriaclassiccoaches.co.uk for details of services 571 (Mondays only), and 572 (Wednesdays only) bus times.

Visit www.westerdalesbus.co.uk or phone 015396 20125 for details of S6 (Tuesdays & Thursdays, only) and S5 (Fridays, only) bus times.

Additional bus services may operate into the Yorkshire Dales National Park during the summer months. Visit www.dalesbus.org for full details of local bus services.

A very limited service operates on certain days only to Ravenstonedale, Tebay, Sedbergh and Kendal from stop (A), also to Kirkby Stephen Town Centre and Brough from stop (B). For details see timetables at bus stops or contact Traveline.

AONB North Pennines AONB; www.northpennines.org.uk/
 National Park Yorkshire Dales National Park; www.yorkshiredales.org.uk/

Taxis

Kirkby Stephen station has no taxi rank or cab office. Advance booking is essential, please consider using the following local operators: (Inclusion of this number doesn't represent any endorsement of the taxi firm)

Prima Taxis
01768 372 557

B D Taxis
01768 371 682

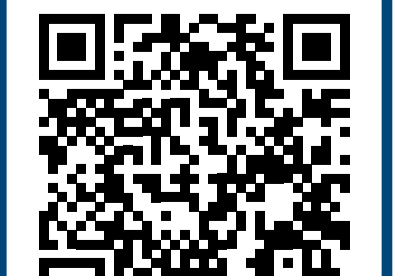
AM Taxi
07930 856 778

Further information about all onward travel

Local Cycle Info cumbria.gov.uk/cycling <small>For more information about cycle routes.</small>	National Cycle Info sustrans.org.uk <small>Sustrans is the UK's leading sustainable transport charity.</small>	Bus Times <small>See timetable displays at bus stops.</small> www.traveline.info 0871 200 22 33 <small>calls cost 13p per minute plus your phone company's access charge</small>	NextBuses Find the bus times for your stop. <small>Search for a bus stop by entering a postcode, street & town or a stop name & town.</small>	PlusBus plusbus.info <small>A discount price 'bus pass' that you buy with your train ticket. It gives you unlimited bus travel around your chosen town, on participating buses.</small>
--	--	--	---	--

National Rail Enquiries

Online nationalrail.co.uk	NRE App Free National Rail Enquiries app for iOS and Android	Social Media facebook.com/nationalrailenq @nationalrailenq	Alert Me <small>You can sign up to Alert Me messages on the National Rail Enquiries website where you can receive train and platform notifications directly to your smart phone.</small> nationalrail.co.uk/alertme	Contact Centre 03457 48 49 50 <small>Calls cost no more than calls to geographic numbers (01 or 02) and may be recorded.</small>	PlusBike nationalrail.co.uk/plusbike <small>For more information.</small>
---	---	--	--	--	---



This poster shows details of popular destinations and main, frequent bus routes. Additional services may run, so please check with Traveline or see posters at local bus stops. Whilst considerable care has been taken to ensure the information contained on this poster is correct and accurate, National Rail cannot accept responsibility for any loss or inconvenience caused by any errors or omissions, or for loss, damage, injury or inconvenience relating to the cancellation, alteration, delay or diversion of a service. For any feedback, please e-mail comments@onwardtravelposters.com

Scan this code with your mobile for full station information.