



# Maidenhead Station

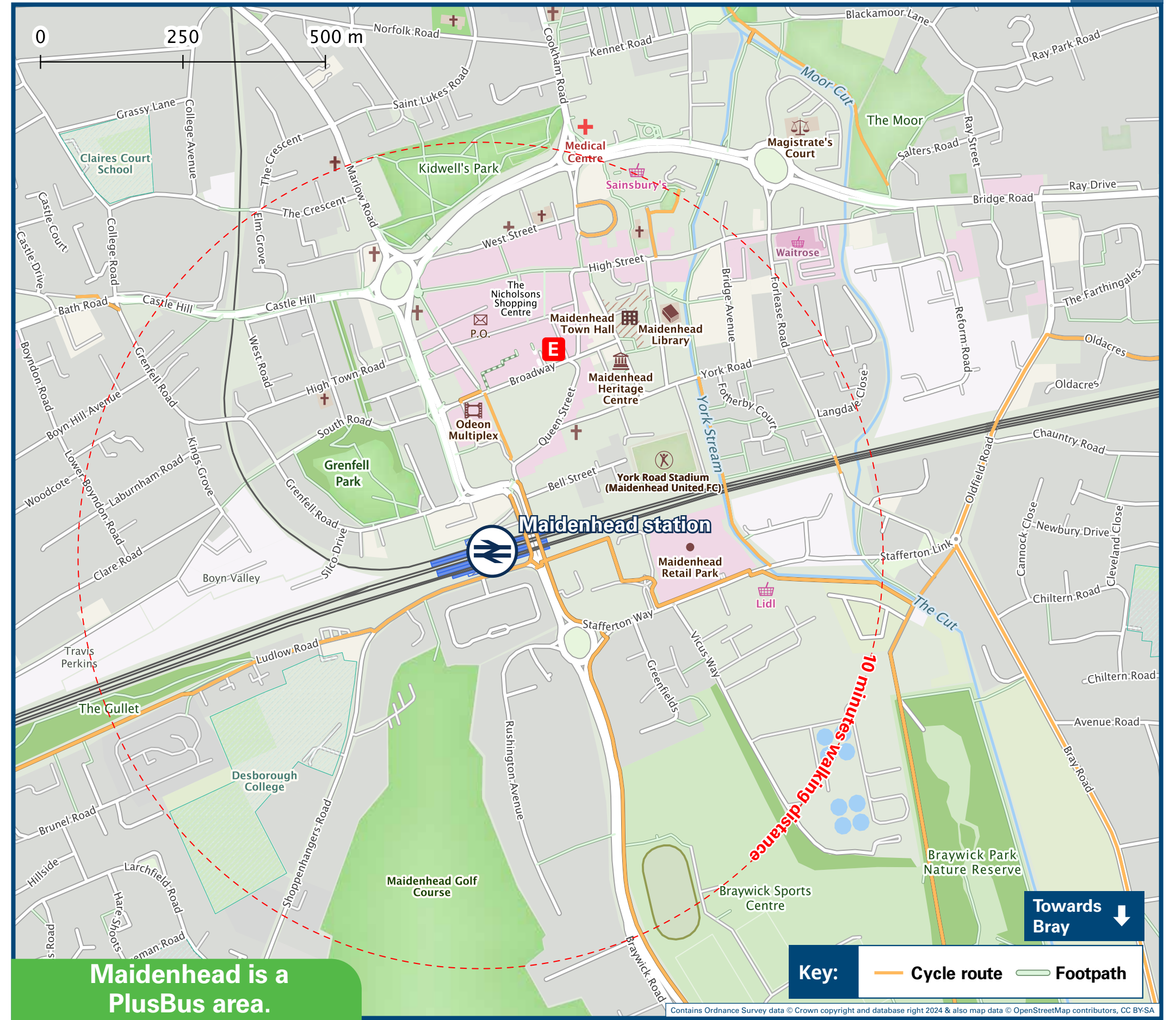
## Onward Travel Information

### Buses and Taxis



Rail replacement services depart at the bus stop at the end of the station forecourt.

### Local area map



PlusBus is a discount price 'bus pass' that you buy with your train ticket. It gives you unlimited bus travel around your chosen town, on participating buses. Visit [www.plusbus.info](http://www.plusbus.info)

### Main destinations by bus

(Data correct at September 2024)



DESTINATION	BUS ROUTES	BUS STOP
Berkshire College of Agriculture	238 <sup>^^</sup> , 239	D
Bourne End Station	37, 37A*, 37B**	E
Bracknell	53	C
Bray Village (High Street)	16	C
Bray Wick (Windsor Road)	6, 53, 234	C
Britwell	53	D
Burchett's Green	238, 239	D
Burnham (Lent Rise Road)	53	D
Burnham (Sainsbury's, Bath Road)	6, 53	D
Cippenham (Bath Road, for Burnham station)	6	D
Clewer (Foster Avenue)	16	C
Cookham / Cookham Rise	37, 37A*, 37B**	E
Cox Green	7, 235 <sup>^</sup>	A
Dedworth	16	C
Domey	63***	E
Eton (& Eton College)	63***	E
Eton Wick	63***	E
Farnham Royal	53	D
Fifield	16	C
Furze Platt	9, 37, 37A*, 37B**	E
Hare Hatch	234	C
Hare Hatch	234, 235 <sup>^</sup>	E
Hare Hatch	127*	D
Henley-on-Thames	239 <sup>^^^</sup>	B
High Wycombe	37, 37A*, 37B**	E
Holyport	53	C
Hurley (High Street)	238 <sup>^^</sup> , 239	D
Jealott's Hill	53	C

DESTINATION	BUS ROUTES	BUS STOP
Knowl Hill	234, 235 <sup>^</sup>	E
Knowl Hill	127*	D
Littlewick Green	234	C
Littlewick Green	234, 235 <sup>^</sup>	E
Loudwater	37, 37A*, 37B**	E
Maidenhead (Boulter's Lock)	8	E
Maidenhead (Cranbrook Drive)	9	E
Maidenhead (Farmers Way)	3	D
Maidenhead (Halifax Road)	9	E
Maidenhead (Highfield Lane, for Foundation Park)	3	D
Maidenhead (Highfield Lane, for Foundation Park)	F10(See Note #)	B, F
Maidenhead (Wootton Way)	3	D
Moneyrow Green	53	C
Paley Street	234	C
Paley Street	234, 235 <sup>^</sup>	E
Reading	127*	D
Shurlock Row	234	C
Shurlock Row	234, 235 <sup>^</sup>	E
Slough (Town Centre)	6	D
Slough (Town Centre)	63***	E
Slough Trading Estate	6	D
St Marks Hospital (Maidenhead)	3, 238 <sup>^^</sup> , 239	D
St Marks Hospital (Maidenhead)	9, 234	E
Taplow (Bath Road)	6, 53	D
Twyford	127*	D
Waltham St Lawrence	234	C
Waltham St Lawrence	234, 235 <sup>^</sup>	E
Wexham Court (Slough)	6	D

DESTINATION	BUS ROUTES	BUS STOP
Wexham Park Hospital (Slough)	53	D
White Waltham	234, 235 <sup>^</sup>	E
Windsor (for Windsor Castle)	16	C
Wooburn/Wooburn Green	37, 37A*, 37B**	E
Woodlands Park	7, 235 <sup>^</sup>	A
Wycombe Marsh	37, 37A*, 37B**	E

**Notes**

- PlusBus destination, please see below for details.
- Bus routes 3, 6, 7, 9 and 16 operate daily.
- Bus routes 8, 37, 53, 234 and 239 operate Mondays to Saturdays.
- For bus times and other bus enquiries, please contact Traveline on 0871 200 22 33.
- ⊙ Direct trains operate from this station to this destination.
- ⊕ For connecting train services to this destination, please change trains at Twyford.
- ⊕ For connecting train services to this destination, please change trains at Slough.
- \* Bus routes 37A and 127 operate Saturdays only.
- \*\* Bus route 37B operates Sundays and Public Holidays only.
- \*\*\* Bus route 63 operates a limited service on Tuesdays and Fridays only.
- <sup>^</sup> Bus route 235 operates a limited service on Mondays to Fridays only.
- <sup>^^</sup> Bus route 238 operates Tuesdays and Thursdays only.
- <sup>^^^</sup> Bus route 239 operates Mondays, Wednesdays, Fridays and Saturdays only to Henley-on-Thames.
- # Please note, bus route F10 operates Mondays to Fridays only to Foundation Park: Off peak journeys from stop (B) and early morning/evening peak journeys from stop (F). This is a private contract service for authorised passengers only and not a public bus service.

### Taxis

Maidenhead station is served by a taxi rank or cab office. Check availability before travelling, and pre-book if necessary. Please consider using the following local operators: (Inclusion of this number doesn't represent any endorsement of the taxi firm)

**A1 Taxis**  
01628 628 414

**Dot2Dot Taxis**  
01628 200 999

**Lent Rise Cars**  
01628 666 555

### Further information about all onward travel

<b>Local Cycle Info</b> <a href="http://rbwm.gov.uk">rbwm.gov.uk</a> <small>For more information about cycle routes.</small>	<b>National Cycle Info</b> <a href="http://sustrans.org.uk">sustrans.org.uk</a> <small>Sustrans is the UK's leading sustainable transport charity.</small>	<b>Bus Times</b> <small>See timetable displays at bus stops.</small>  <a href="http://www.traveline.info">www.traveline.info</a> <b>0871 200 22 33</b> <small>calls cost 10p per minute plus your phone company's access charge</small>	<b>NextBuses</b> <b>Find the bus times for your stop.</b> <small>Search for a bus stop by entering a postcode, street &amp; town or a stop name &amp; town.</small>	<b>PlusBus</b> <b>plusbus.info</b> <small>A discount price 'bus pass' that you buy with your train ticket. It gives you unlimited bus travel around your chosen town, on participating buses.</small>
--	--	--	---	---

### National Rail Enquiries

<b>Online</b> <a href="http://nationalrail.co.uk">nationalrail.co.uk</a>	<b>NRE App</b> <b>Free National Rail Enquiries app for iOS and Android</b>	<b>Social Media</b> <a href="https://www.facebook.com/nationalrailenq">facebook.com/nationalrailenq</a> <a href="https://twitter.com/nationalrailenq">@nationalrailenq</a>	<b>Alert Me</b> <small>You can sign up to Alert Me messages on the National Rail Enquiries website where you can receive train and platform notifications directly to your smart phone.</small> <a href="http://nationalrail.co.uk/alertme">nationalrail.co.uk/alertme</a>	<b>Contact Centre</b> <b>03457 48 49 50</b> <small>Calls cost no more than calls to geographic numbers (01 or 02) and may be recorded.</small>	<b>PlusBike</b> <a href="http://nationalrail.co.uk/plusbike">nationalrail.co.uk/plusbike</a> <small>For more information.</small>
---	---	--	--	--	---



**National Rail**  
Britain's train companies working together



This poster shows details of popular destinations and main, frequent bus routes. Additional services may run, so please check with Traveline or see posters at local bus stops. Whilst considerable care has been taken to ensure the information contained on this poster is correct and accurate, National Rail cannot accept responsibility for any loss or inconvenience caused by any errors or omissions, or for loss, damage, injury or inconvenience relating to the cancellation, alteration, delay or diversion of a service. For any feedback, please e-mail [comments@onwardtravelposters.com](mailto:comments@onwardtravelposters.com)

Scan this code with your mobile for full station information.