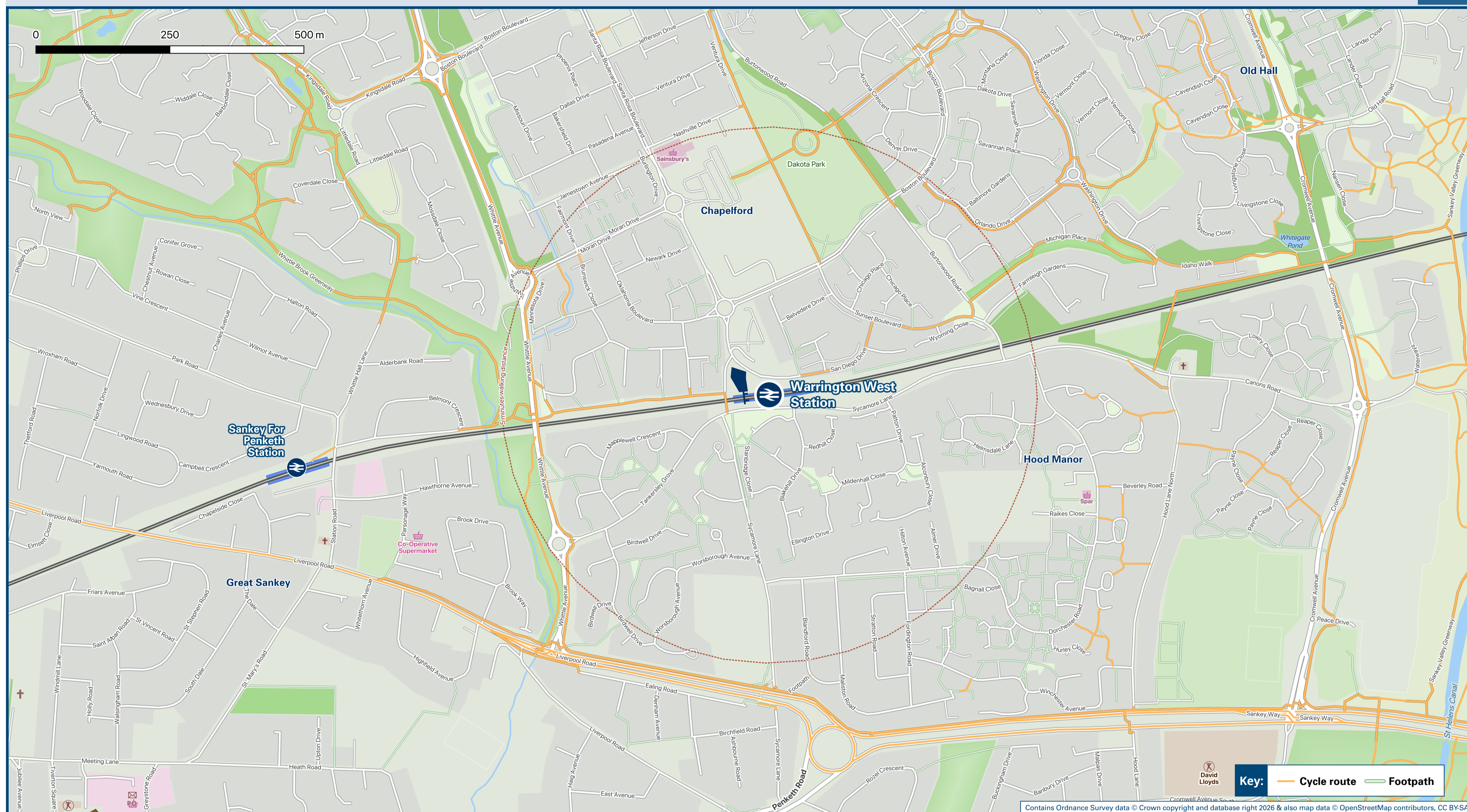




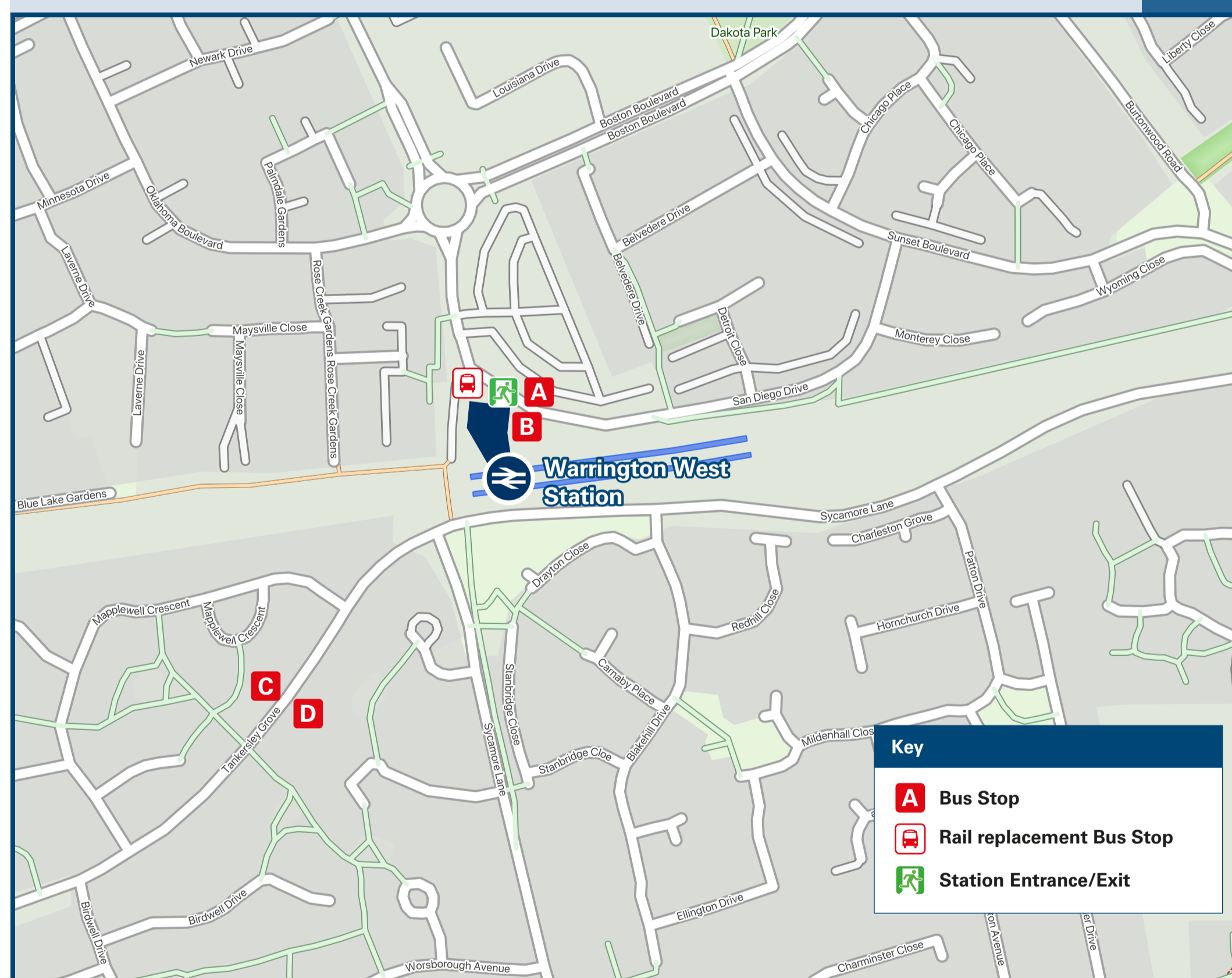
# Warrington West Station

## Onward Travel Information

### Local area map



### Buses



Rail replacement pick-up/drop-off at the bus stop outside the Station on San Diego Drive.

### Main destinations by bus

(Data correct at February 2026)

DESTINATION	BUS ROUTES	BUS STOP
Great Sankey (Old Hall)	13, 14, 15	C
	13, 14, 15	D
Lingley Green	13	A
	13, 14, 15	D
Lingley Mere	13	A
Meeting Lane	14, 15	D
Old Hall	13	A
	13, 14, 15	C
Penketh Lane Ends	14, 15	D
	13	B
Warrington Interchange (Town Centre)	13, 14, 15	C
	13, 14, 15	D

**Notes**

- Bus routes 13 & 14 operate daily services, Mondays to Sundays.
- Bus route 15 operates a Mondays to Saturdays service, only. No Sunday service.
- For bus times and days of operation please contact Traveline on [www.traveline.info](http://www.traveline.info) or call: 0871 200 22 33
- Direct trains operate to this destination from this Station.

### Taxis

Warrington West Station has no taxi rank or cab office. Advance booking is essential, please consider using the following local operators: (Inclusion of this number doesn't represent any endorsement of the taxi firm)

**Warrington Cars**  
01925 907 222

**Bank Quay Taxis**  
01925 393 444

**Lymmited Taxis**  
01925 393 111

### Further information about all onward travel

<b>Local Cycle Info</b> <a href="http://warrington.gov.uk">warrington.gov.uk</a> <small>For more information about cycle routes.</small>	<b>National Cycle Info</b> <a href="http://walkwheelcycletrust.org.uk">walkwheelcycletrust.org.uk</a>	<b>Bus Times</b> <small>See timetable displays at bus stops.</small> <a href="http://www.traveline.info">www.traveline.info</a> <b>0871 200 22 33</b> <small>calls cost 13p per minute plus your phone company's access charge</small>	<a href="http://plusbus.info">plusbus.info</a> <small>PlusBus is a discount price 'bus pass' that you buy with your train ticket. It gives you unlimited bus travel around your chosen town, on participating buses. Visit <a href="http://www.plusbus.info">www.plusbus.info</a></small>
--	--	--	--

### National Rail Enquiries

<b>Online</b> <a href="http://nationalrail.co.uk">nationalrail.co.uk</a>	<b>NRE App</b> <b>Free National Rail Enquiries app for iOS and Android</b>	<b>Social Media</b> <a href="https://facebook.com/nationalrailenq">facebook.com/nationalrailenq</a> <a href="https://twitter.com/nationalrailenq">@nationalrailenq</a>	<b>Alert Me</b> <small>You can sign up to Alert Me messages on the National Rail Enquiries website where you can receive train and platform notifications directly to your smart phone.</small> <a href="http://nationalrail.co.uk/alertme">nationalrail.co.uk/alertme</a>	<b>Contact Centre</b> <b>03457 48 49 50</b> <small>Calls cost no more than calls to geographic numbers (01 or 02) and may be recorded.</small>	<b>PlusBike</b> <a href="http://nationalrail.co.uk/plusbike">nationalrail.co.uk/plusbike</a> <small>For more information.</small>
---	---	--	--	--	---



This poster shows details of popular destinations and main, frequent bus routes. Additional services may run, so please check with Traveline or see posters at local bus stops. Whilst considerable care has been taken to ensure the information contained on this poster is correct and accurate, National Rail cannot accept responsibility for any loss or inconvenience caused by any errors or omissions, or for loss, damage, injury or inconvenience relating to the cancellation, alteration, delay or diversion of a service. For any feedback, please e-mail [comments@onwardtravelposters.com](mailto:comments@onwardtravelposters.com)

Scan this code with your mobile for full station information.