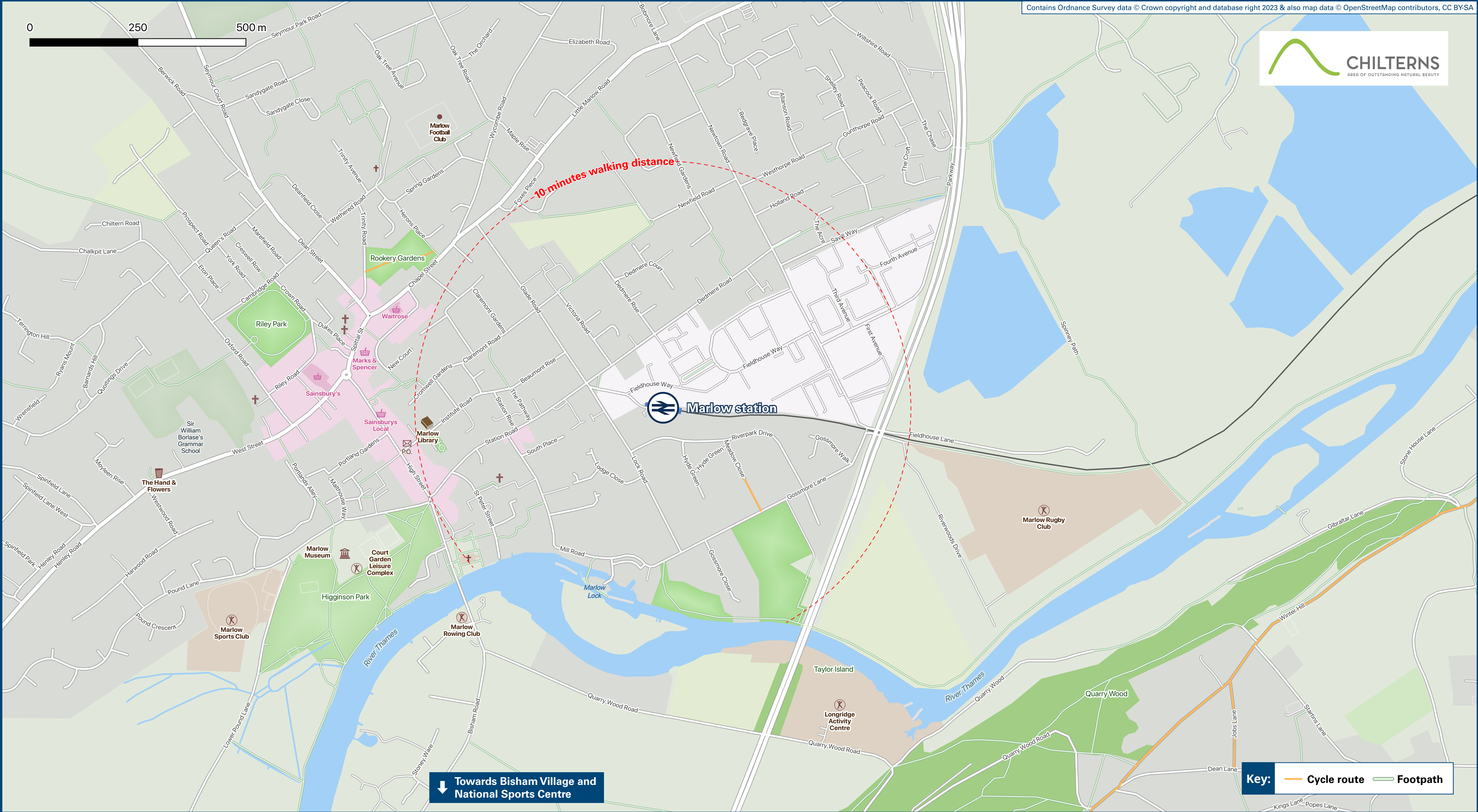




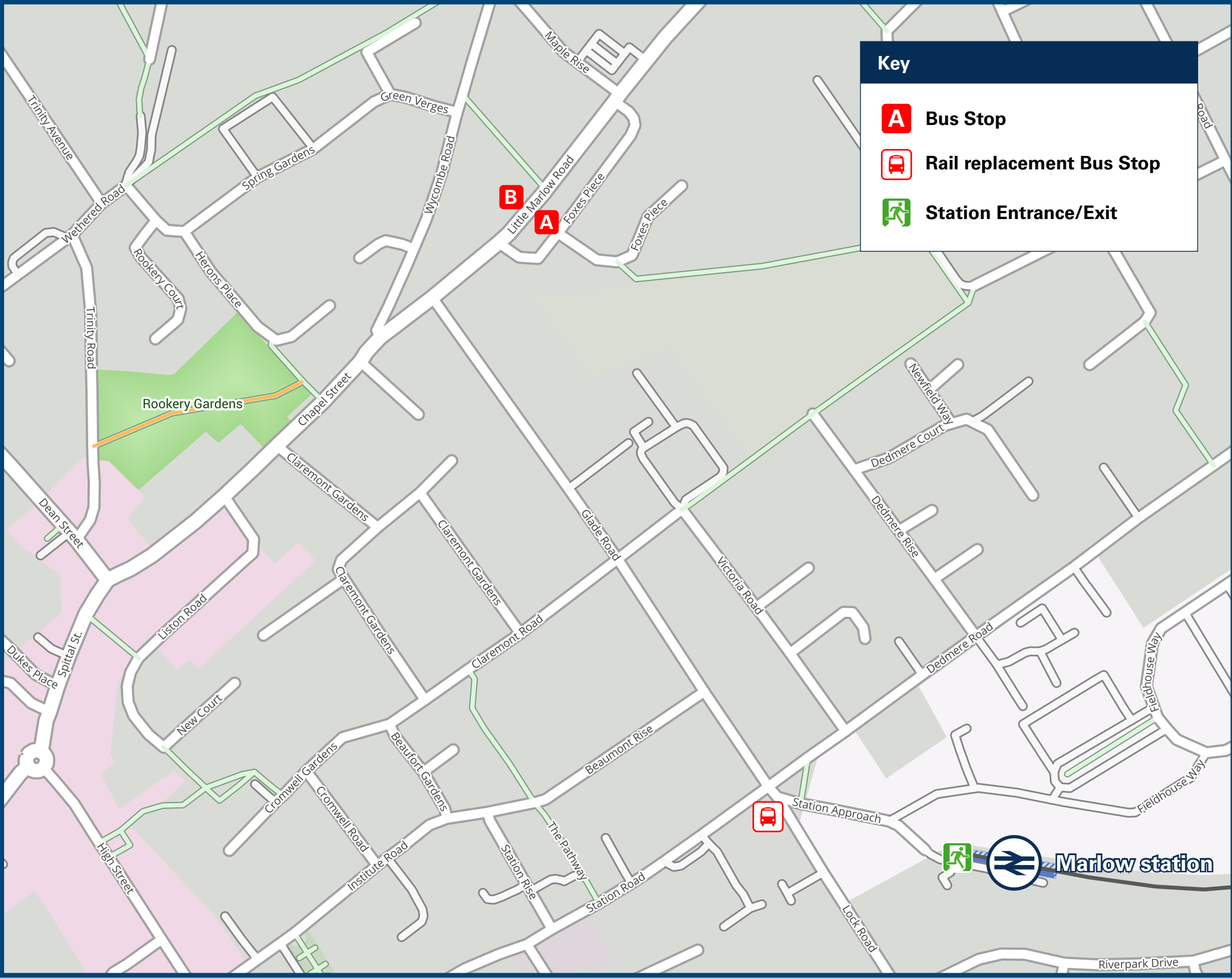
# Marlow Station

## Onward Travel Information

### Local area map



### Buses



Rail replacement bus services operate from the station approach.

### Main destinations by bus

(Data correct at November 2023)

DESTINATION	BUS ROUTES	BUS STOP
Caversham	800	A
Charvil	850	A
Cressex	800, 850	B
Danesfield	800, 850	A
Dunsden Green	800	A
Henley-on-Thames	800, 850	A
High Wycombe	800, 850	B
Little Marlow	155*, 160**	B
Lower Shiplake	800	A
Maidenhead	155*	B
Marlow Bottom	155*, 160**, 800, 850	B
Medmenham	800, 850	A
Reading	800, 850	A
Shiplake	800	A
Swiss Farm Caravan Park	800, 850	A
Twyford	850	A
Wargrave	850	A

#### Notes

Bus route 800 operates daily, Mondays to Sundays.  
Bus route 850 operates Mondays to Saturdays.  
For the latest bus timetables, please see [www.buckinghamshire.gov.uk/public-transport](http://www.buckinghamshire.gov.uk/public-transport) or contact Traveline.  
Direct trains operate from this station to Maidenhead.  
For connecting train services to this destination, please change trains at Maidenhead.  
For connecting train services to this destination, please change trains at Maidenhead and Twyford.  
\* Bus route 155 operates a limited service on Wednesdays only.  
\*\* Bus route 160 operates a limited service on Mondays, Tuesdays, Thursdays and Fridays only.

### Taxis

Marlow Station has no taxi rank or cab office. Advance booking is essential, please consider using the following local operators: (Inclusion of this number doesn't represent any endorsement of the taxi firm)

**Marlow Taxi Services**  
01628 200 107

**Euphoria Cars**  
01628 477 777

**Ritz Executive Cars**  
01628 260 260

### Further information about all onward travel

Local Cycle Info	National Cycle Info	Bus Times	NextBuses	PlusBus
<a href="http://www.buckinghamshire.gov.uk">www.buckinghamshire.gov.uk</a> For more information about cycle routes.	<a href="http://sustrans.org.uk">sustrans.org.uk</a> Sustrans is the UK's leading sustainable transport charity.	See timetable displays at bus stops. <a href="http://www.traveline.info">www.traveline.info</a> 0871 200 22 33 calls cost 10p per minute plus your phone company's access charge	Find the bus times for your stop. Search for a bus stop by entering a postcode, street & town or a stop name & town.	<a href="http://plusbus.info">plusbus.info</a> A discount price 'bus pass' that you buy with your train ticket. It gives you unlimited bus travel around your chosen town, on participating buses.

### National Rail Enquiries

Online	NRE App	Social Media	Alert Me	Contact Centre	PlusBike
<a href="http://nationalrail.co.uk">nationalrail.co.uk</a>	Free National Rail Enquiries app for iOS and Android	<a href="https://www.facebook.com/nationalrailenq">facebook.com/nationalrailenq</a> <a href="https://twitter.com/nationalrailenq">@nationalrailenq</a>	You can sign up to Alert Me messages on the National Rail Enquiries website where you can receive train and platform notifications directly to your smart phone. <a href="http://nationalrail.co.uk/alertme">nationalrail.co.uk/alertme</a>	03457 48 49 50 Calls cost no more than calls to geographic numbers (01 or 02) and may be recorded.	<a href="http://nationalrail.co.uk/plusbike">nationalrail.co.uk/plusbike</a> For more information.



**National Rail**  
Britain's train companies working together



This poster shows details of popular destinations and main, frequent bus routes. Additional services may run, so please check with Traveline or see posters at local bus stops. Whilst considerable care has been taken to ensure the information contained on this poster is correct and accurate, National Rail cannot accept responsibility for any loss or inconvenience caused by any errors or omissions, or for loss, damage, injury or inconvenience relating to the cancellation, alteration, delay or diversion of a service. For any feedback, please e-mail [comments@onwardtravelposters.com](mailto:comments@onwardtravelposters.com)

Scan this code with your mobile for full station information.