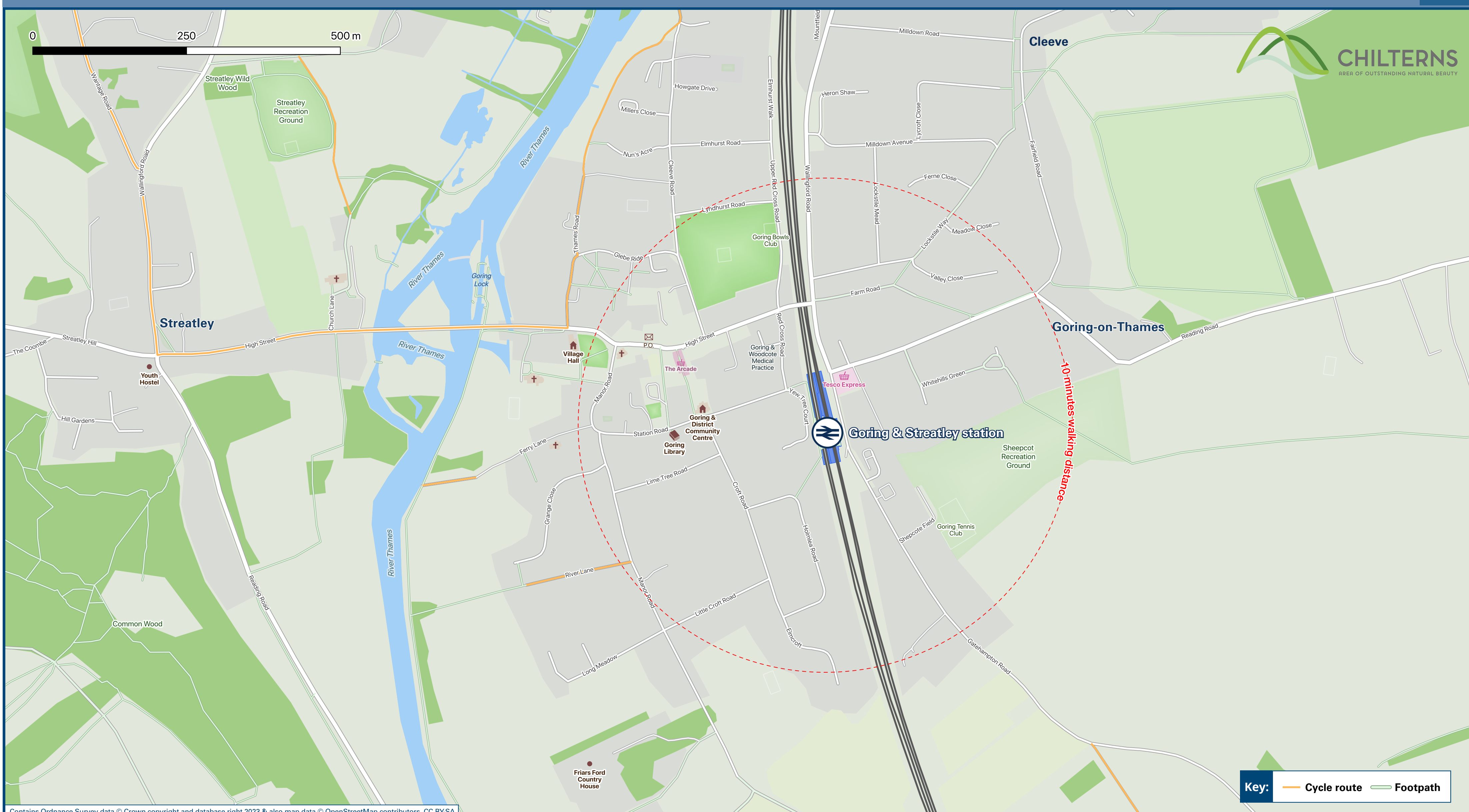




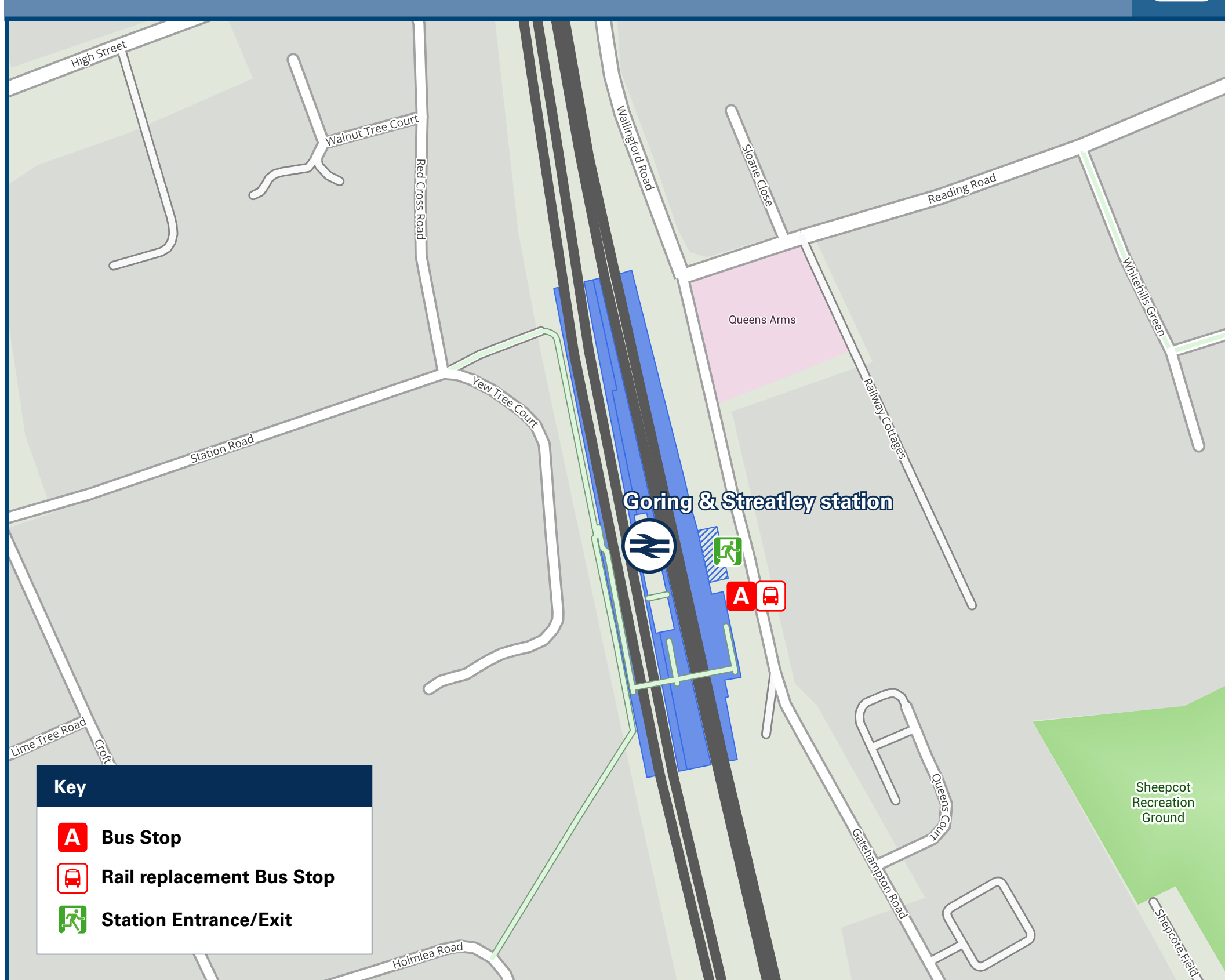
# Goring & Streatley Station

# Onward Travel Information

## Local area map



## Buses



Rail replacement buses/coaches depart from the station entrance bus stop.

## Main destinations by bus

(Data correct at November 2023)

DESTINATION	BUS ROUTES	BUS STOP
Basildon Park Gates (National Trust)	143, 145	A
Beale Wildlife Park	143, 145	A
Cholsey	Direct train	
Cleeve	134, 134L	A
Crays Pond	145, 147	A
Lower Basildon	143, 145	A
Moulsford	133	A
North Stoke	134, 134L	A
Pangbourne	143, 145	A
South Stoke	134, 134L	A
Streatley	133, 143, 145	A
Upper Basildon	143	A
Wallingford (Market Place)	133, 134, 134L	A
Wallingford Community Hospital	133, 134, 134L	A
Wallingford Station / Lidl Supermarket	133, 134, 134L	A

### Notes

Bus route 133 operates Mondays, Wednesdays and Fridays only.  
 Bus routes 134 and 134L operate Mondays to Fridays.  
 Bus route 143 operates Mondays to Saturdays only.  
 Bus route 145 operates Tuesdays only.  
 Bus route 147 operates Tuesdays and Thursdays only.  
 For bus times and other bus enquiries, please contact Traveline on 0871 200 22 33 or contact the bus operator (see below):  
 Going Forward Buses (for bus routes 133, 134, 134L, 145 & 147) call 07484 605 888 or email: littlebluebus@yahoo.com or Thames Travel (for bus route 143) call 01865 785 400.  
 Direct trains operate to this destination from this station.  
 Alight here for the Cholsey & Wallingford Railway (The Bunk Line). Telephone 01491 835 067 (Train running days only) or see www.cholsey-wallingford-railway.com for more information.

## Taxis

Goring & Streatley station has no taxi rank or cab office. Advance bookings essential, please consider using the following local operators: (Inclusion of this number doesn't represent any endorsement of the taxi firm)

**Britain Taxis**  
07500 430 715

**Ipsden Taxis**  
07894 994 047

**Murdocks Taxis**  
01491 872 029

## Further information about all onward travel

<b>Local Cycle Info</b> oxfordshire.gov.uk For more information about cycle routes.	<b>National Cycle Info</b> sustrans.org.uk Sustrans is the UK's leading sustainable transport charity.	<b>Bus Times</b> See timetable displays at bus stops. www.traveline.info 0871 200 22 33 calls cost 10p per minute plus your phone company's access charge	<b>NextBuses .mobi</b> Find the bus times for your stop. Search for a bus stop by entering a postcode, street & town or a stop name & town.	<b>PlusBus</b> plusbus.info A discount price "bus pass" that you buy with your train ticket. It gives you unlimited bus travel around your chosen town, on participating buses.
---	--	---	---	---

## National Rail Enquiries

<b>Online</b> nationalrail.co.uk	<b>NRE App</b> Free National Rail Enquiries app for iOS and Android	<b>Social Media</b> facebook.com/nationalrailenq @nationalrailenq	<b>Alert Me</b> You can sign up to Alert Me messages on the National Rail Enquiries website where you can receive train and platform notifications directly to your smart phone. nationalrail.co.uk/alertme	<b>Contact Centre</b> 03457 48 49 50 Calls cost no more than calls to geographic numbers (01 or 02) and may be recorded.	<b>PlusBike</b> nationalrail.co.uk/plusbike For more information.
-------------------------------------	--	---	---	--	---



This poster shows details of popular destinations and main, frequent bus routes. Additional services may run, so please check with Traveline or see posters at local bus stops. Whilst considerable care has been taken to ensure the information contained on this poster is correct and accurate, National Rail cannot accept responsibility for any loss or inconvenience caused by any errors or omissions, or for loss, damage, injury or inconvenience relating to the cancellation, alteration, delay or diversion of a service. For any feedback, please e-mail comments@onwardtravelposters.com

Scan this code with your mobile for full station information.