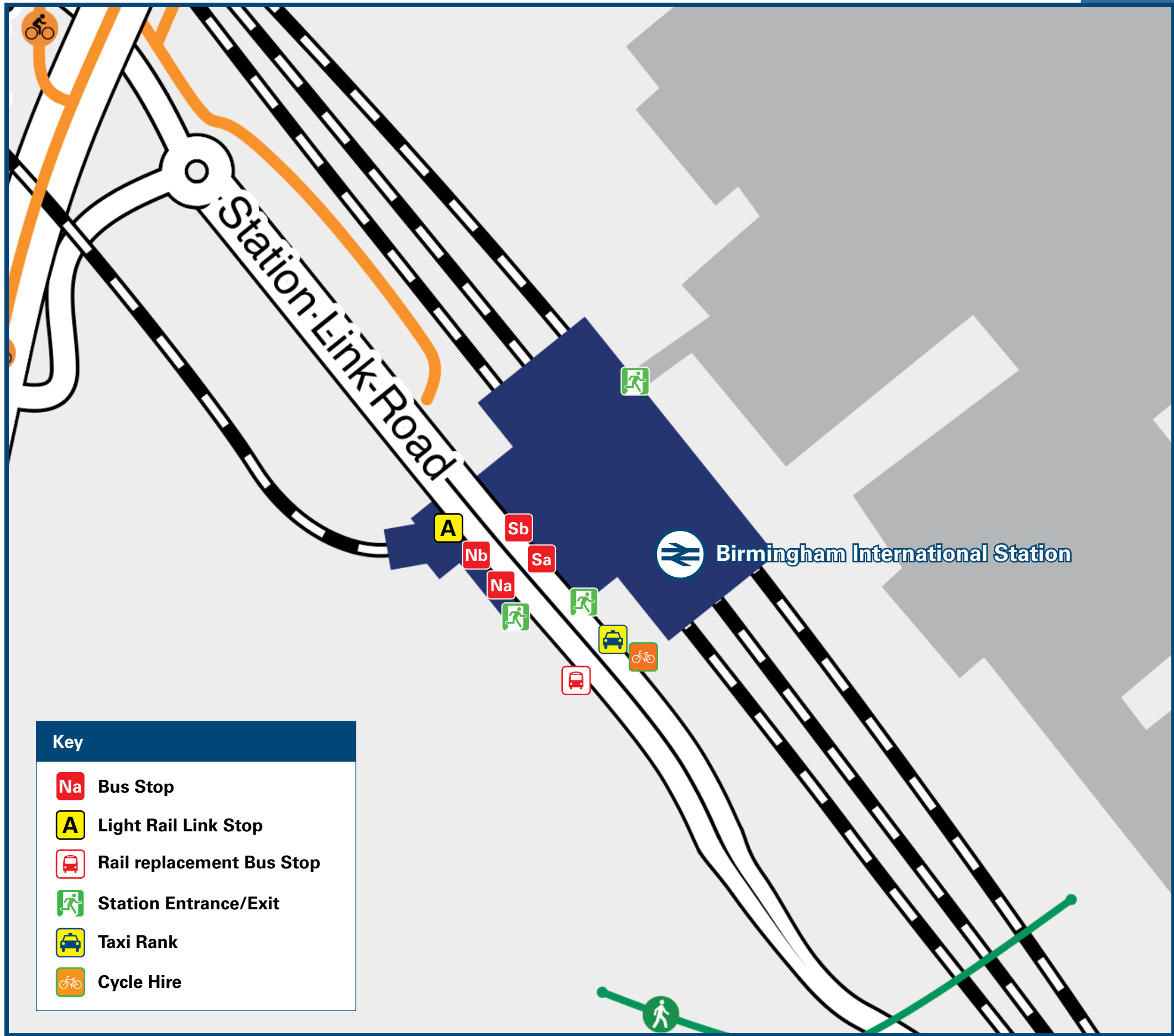




Birmingham International Station

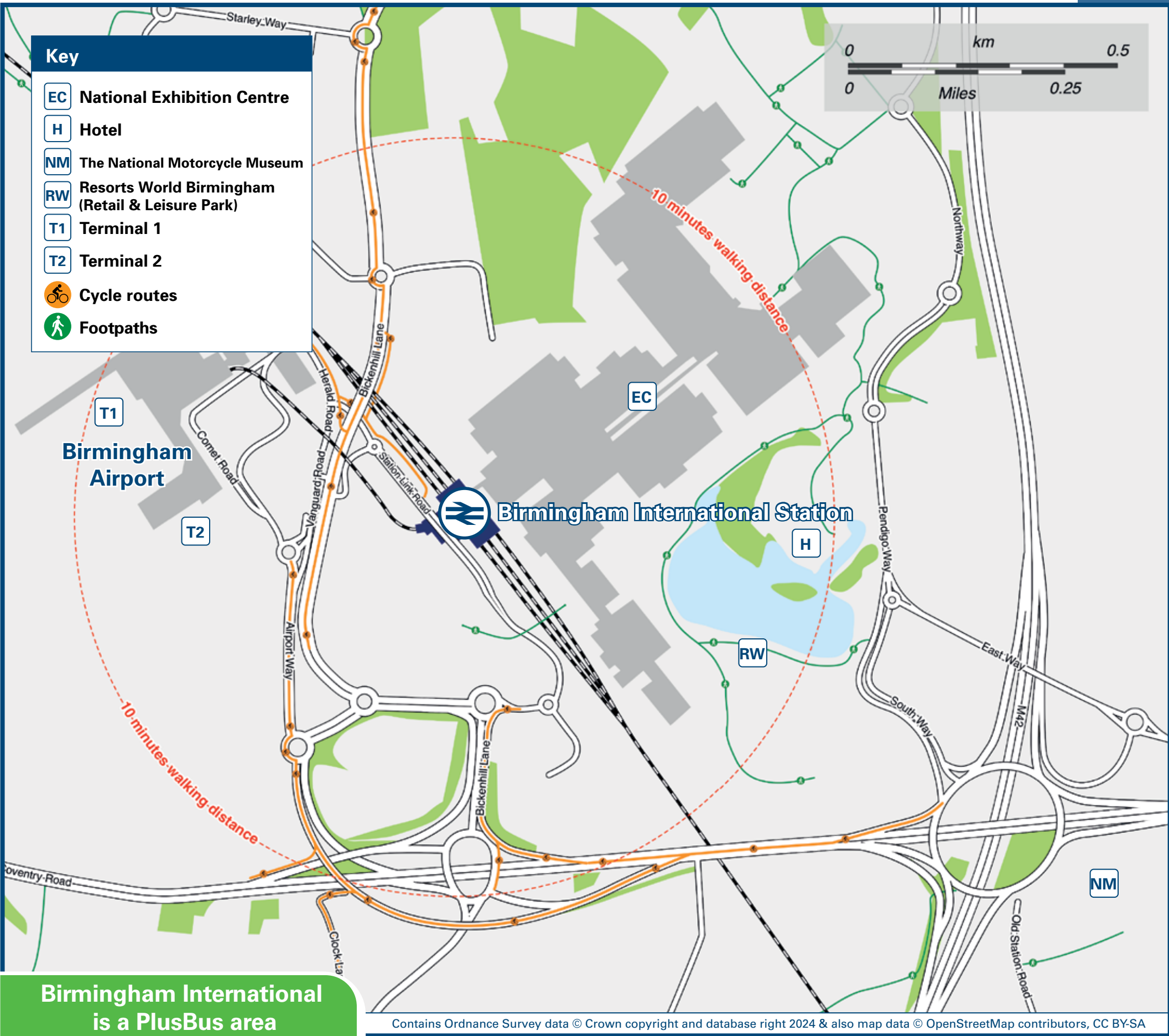
Onward Travel Information

Bus Stop map



Rail replacement coach services can be found at the front of the station, opposite the entrance to the long stay car park.

Local area map



PlusBus

PlusBus is a discount price 'bus pass' that you buy with your train ticket. It gives you unlimited bus travel around your chosen town, on participating buses. Visit www.plusbus.info

Main destinations by bus



DESTINATION	BUS ROUTES	BUS STOP
● Allesley	X1	S B
● Bacons End	X12	S A
● Birmingham Business Park	96*, 97A	N B
	X12	S A
● Birmingham City Centre	X1, X12	S A
	97A	N B
● Birmingham Airport Terminal	Air-Rail Link	A
	96*, X12	S B
	97A	N B
● Bordesley	X1	S A
● Bordesley Green	97A	N B
	96*	N B
● Castle Bromwich	X12	S A
	X12	S A
● Chelmsley Wood Interchange	96*, 97A	N B
	X12	S A
● Coventry	X1	S B

DESTINATION	BUS ROUTES	BUS STOP
● Elmdon (Cargo Terminal)	X1	S A
	X12	S B
● Elmdon Heath	X12	S B
● Erdington (Six Ways)	96*	N B
● Fort Shopping Park	96*	N B
● Hay Mills	X1	S A
● Heartlands Hospital	97A	N B
● Kingshurst	X12	S A
● Kingstanding	96*	N B
● Meriden (The Green)	X1	S B
● Parkfield Estate (Castle Bromwich)	X12	S A
● Sheldon	X1	S A
	96*	N B
● Smiths Wood	X12	S A
	X12	S B
● Solihull (Station Interchange)	X12	S B
● Solihull (Town Centre)	X12	S B

DESTINATION	BUS ROUTES	BUS STOP
● Stechford	97A	N B
● Tile Cross	97A	N B
● Yardley (Swan Centre)	X1	S A

Notes

Bus routes 97A, X1, X12 and the Air-Rail Link operate daily.
For bus times please see bus stop timetables at this station or contact Traveline on 0871 200 22 33.
☑ Direct trains operate to this destination from this station.
* Bus route 96 operates Monday to Saturday evenings and all day on Sundays & Public Holidays from this station.
Bike Hire bromptondock.co.uk 020 8232 3931 (text 3134 to reserve bike)
● **PLUSBUS** destination, please see below for details.

Taxis

Birmingham International is a major station where taxis are usually on a rank. Advance booking is not normally necessary, unless arriving early in the morning or late at night. Operators who may accept bookings include: (Inclusion of this number doesn't represent any endorsement of the taxi firm)

A1 Airport Taxis
0777 100 295

Birmingham Airport Transfers
0121 803 6903

Link Executive Transfers
0121 238 3831

Further information about all onward travel

Local Cycle Info solihull.gov.uk For more information about cycle routes.	National Cycle Info sustrans.org.uk Sustrans is the UK's leading sustainable transport charity.	Bus Times See timetable displays at bus stops. www.traveline.info 0871 200 22 33 calls cost 15p per minute plus your phone company's access charge	NextBuses Find the bus times for your stop. Search for a bus stop by entering a postcode, street & town or a stop name & town.	PlusBus plusbus.info A discount price 'bus pass' that you buy with your train ticket. It gives you unlimited bus travel around your chosen town, on participating buses.
---	---	---	--	--

National Rail Enquiries

Online nationalrail.co.uk	NRE App Free National Rail Enquiries app for iOS and Android	Social Media facebook.com/nationalrailenq @nationalrailenq	Alert Me You can sign up to Alert Me messages on the National Rail Enquiries website where you can receive train and platform notifications directly to your smart phone. nationalrail.co.uk/alertme	Contact Centre 03457 48 49 50 Calls cost no more than calls to geographic numbers (01 or 02) and may be recorded.	PlusBike nationalrail.co.uk/plusbike For more information.
---	--	--	---	--	--



National Rail
Britain's train companies working together



This poster shows details of popular destinations and main, frequent bus routes. Additional services may run, so please check with Traveline or see posters at local bus stops. Whilst considerable care has been taken to ensure the information contained on this poster is correct and accurate, National Rail cannot accept responsibility for any loss or inconvenience caused by any errors or omissions, or for loss, damage, injury or inconvenience relating to the cancellation, alteration, delay or diversion of a service. For any feedback, please e-mail comments@onwardtravelposters.com

Scan this code with your mobile for full station information.