



Bromley Cross (Greater Manchester) Station

Onward Travel Information

Buses



Key

A

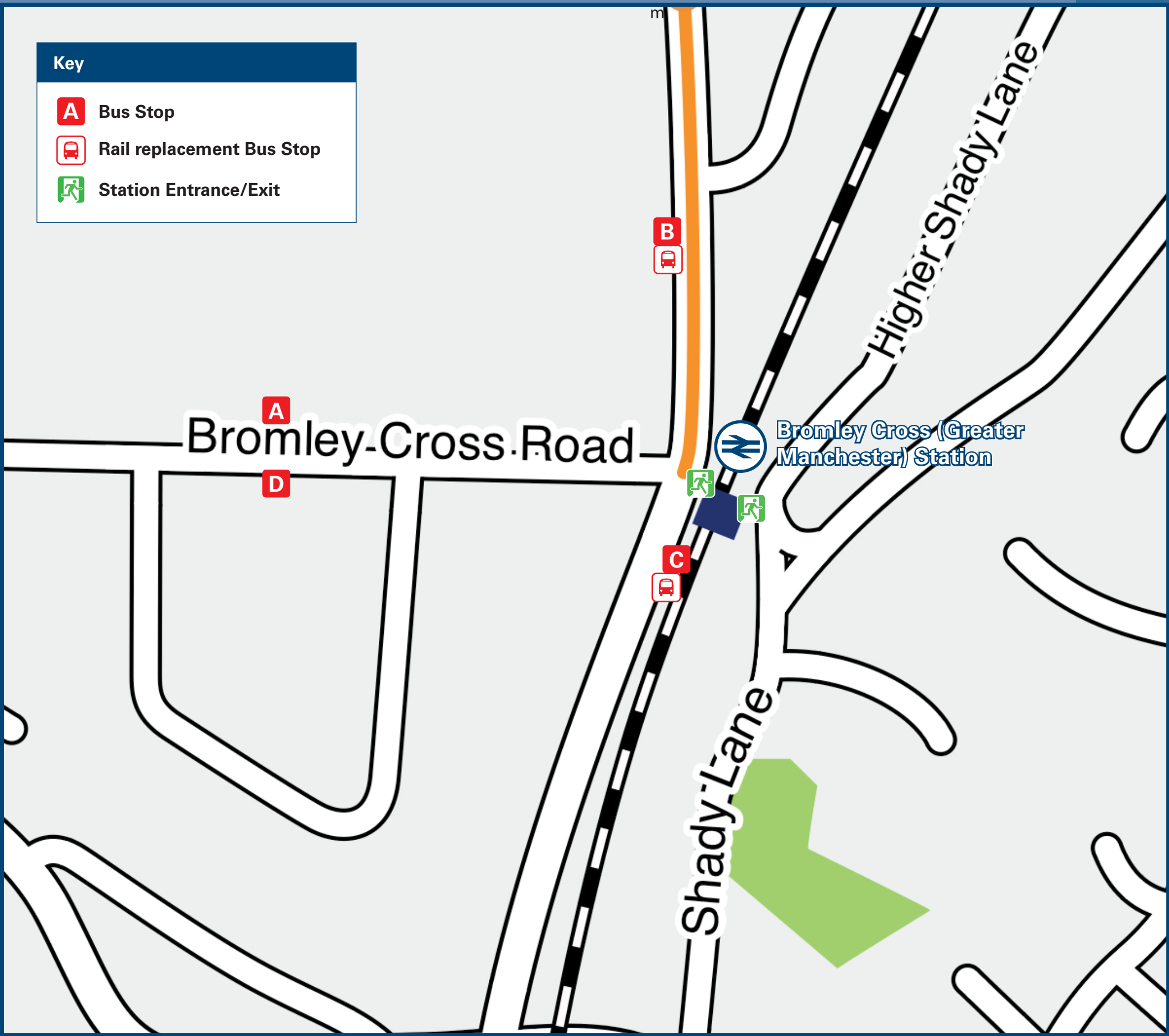
Bus Stop

B

Rail replacement Bus Stop

C

Station Entrance/Exit



Rail replacement buses depart from the bus stop opposite the Railway Public House.

Local area map



Key

L

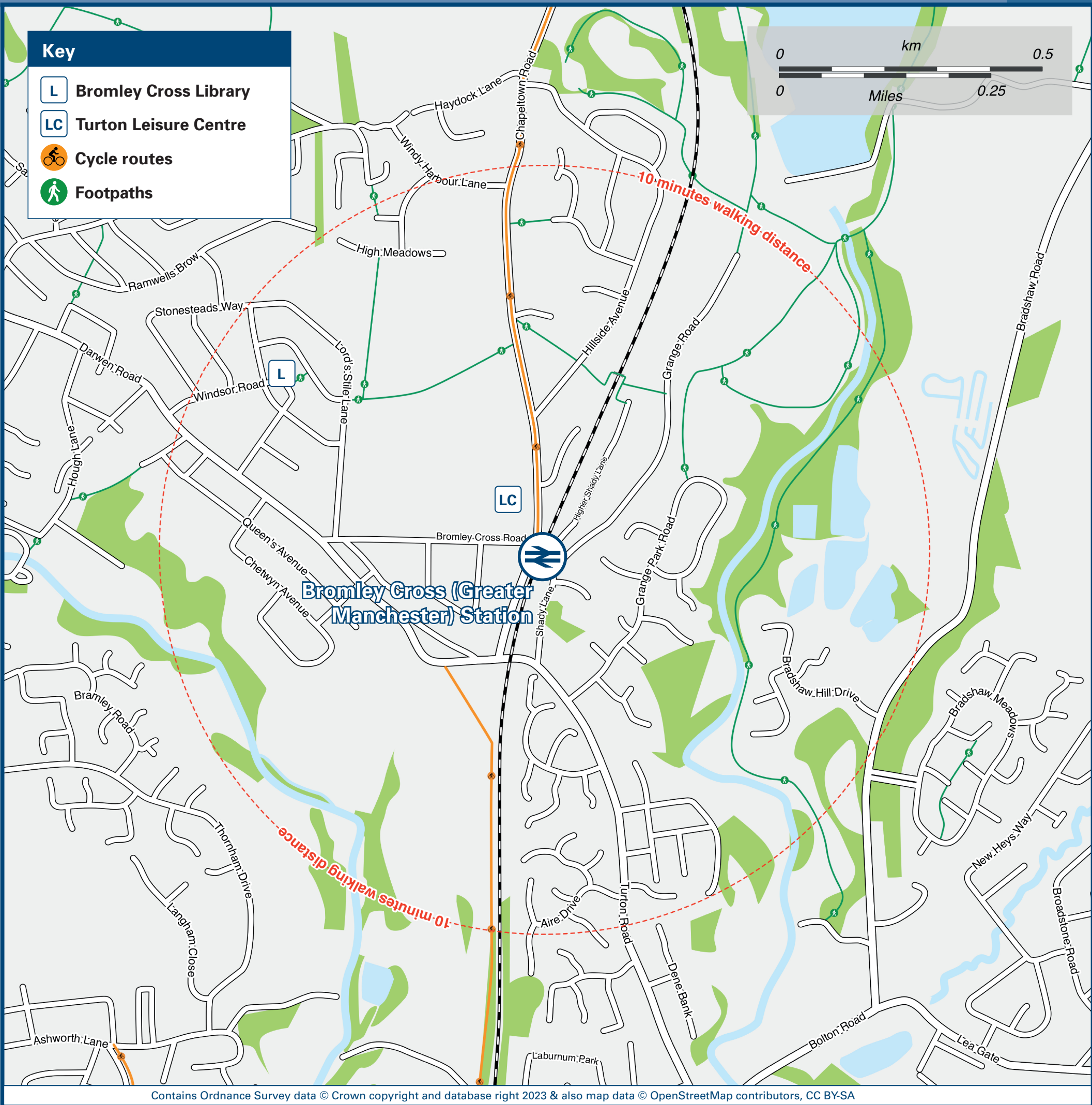
Bromley Cross Library

LC

Turton Leisure Centre

Cycle routes

Footpaths



Main destinations by bus

(Data correct at October 2023)



DESTINATION	BUS ROUTES	BUS STOP
Bolton	541	A, C
Bradshaw Brow (Royal Oak)	541	A, C
Bury	TA2	B
Chapeltown (For Turton Tower)	TA1, TA2	B
Darwen	TA1, TA2#	B
	TA2#	C

DESTINATION	BUS ROUTES	BUS STOP
Edgworth	TA1, TA2	B
Hall I' th' Wood (Crompton Way)	541	A, C
Jumbles Country Park	TA1, TA2	B
Tonge Moor	541	A, C
Toppings Estate (Boonfields)	541	D*
Toppings Estate (Darwen Road)	541	D*

DESTINATION	BUS ROUTES	BUS STOP
Tottington	TA2	B
Turton Bottoms	TA1, TA2	B

Notes

Bus route 541 operates daily.
Bus route TA1 operates Mondays, Tuesdays and Thursdays only.
Bus route TA2 operates Wednesdays, Fridays and Saturdays only.
Bus routes TA1 and TA2 are flexible services contact Travel Assist Ltd on 01254 773 765 for details.
For bus times please see bus stop timetables or contact Traveline on 0871 200 22 33.
* Bus stop D is a 'Hail & Ride' stop (no physical bus stop). Stand opposite bus stop A and signal to the bus as it approaches for the bus to stop.
Some TA2 journeys also run to Darwen from stops B and C, please check the timetable.
Direct trains operate to this destination from this station.

Taxis

Bromley Cross (Greater Manchester) station has no taxi rank or cab office. Advance booking is essential, please consider using the following local operators: (Inclusion of this number doesn't represent any endorsement of the taxi firm)

Metro Cars
01204 520 000

Radio Cars
01204 302 818

S & D Cars
01204 704 040

Further information about all onward travel

<div>Local Cycle Info</div> <div>bolton.gov.uk</div> <div>For more information about cycle routes.</div>	<div>National Cycle Info</div> <div>sustrans.org.uk</div> <div>Sustrans is the UK's leading sustainable transport charity.</div>	<div>Bus Times</div> <div>See timetable displays at bus stops.</div> <div> www.traveline.info 0871 200 22 33 calls cost 15p per minute plus your phone company's access charge</div>	<div>NextBuses </div> <div> </div> <div>Find the bus times for your stop.</div> <div>Search for a bus stop by entering a postcode, street & town or a stop name & town.</div>	<div>PlusBus </div> <div>plusbus.info</div> <div>A discount price 'bus pass' that you buy with your train ticket. It gives you unlimited bus travel around your chosen town, on participating buses.</div>
--	--	--	---	--

National Rail Enquiries

<div>Online</div> <div>nationalrail.co.uk</div>	<div>NRE App</div> <div>Free National Rail Enquiries app for iOS and Android</div>	<div>Social Media</div> <div> facebook.com/nationalrailenq @nationalrailenq</div>	<div>Alert Me</div> <div>You can sign up to Alert Me messages on the National Rail Enquiries website where you can receive train and platform notifications directly to your smart phone. nationalrail.co.uk/alertme</div>	<div>Contact Centre</div> <div>03457 48 49 50 Calls cost no more than calls to geographic numbers (01 or 02) and may be recorded.</div>	<div>PlusBike </div> <div>nationalrail.co.uk/plusbike</div> <div>For more information.</div>
---	--	--	--	---	--



NORTHERN



National Rail
Britain's train companies working together



This poster shows details of popular destinations and main, frequent bus routes. Additional services may run, so please check with Traveline or see posters at local bus stops. Whilst considerable care has been taken to ensure the information contained on this poster is correct and accurate, National Rail cannot accept responsibility for any loss or inconvenience caused by any errors or omissions, or for loss, damage, injury or inconvenience relating to the cancellation, alteration, delay or diversion of a service. For any feedback, please e-mail [comments@onwardtravelposters.com](#)

Scan this code with your mobile for full station information.