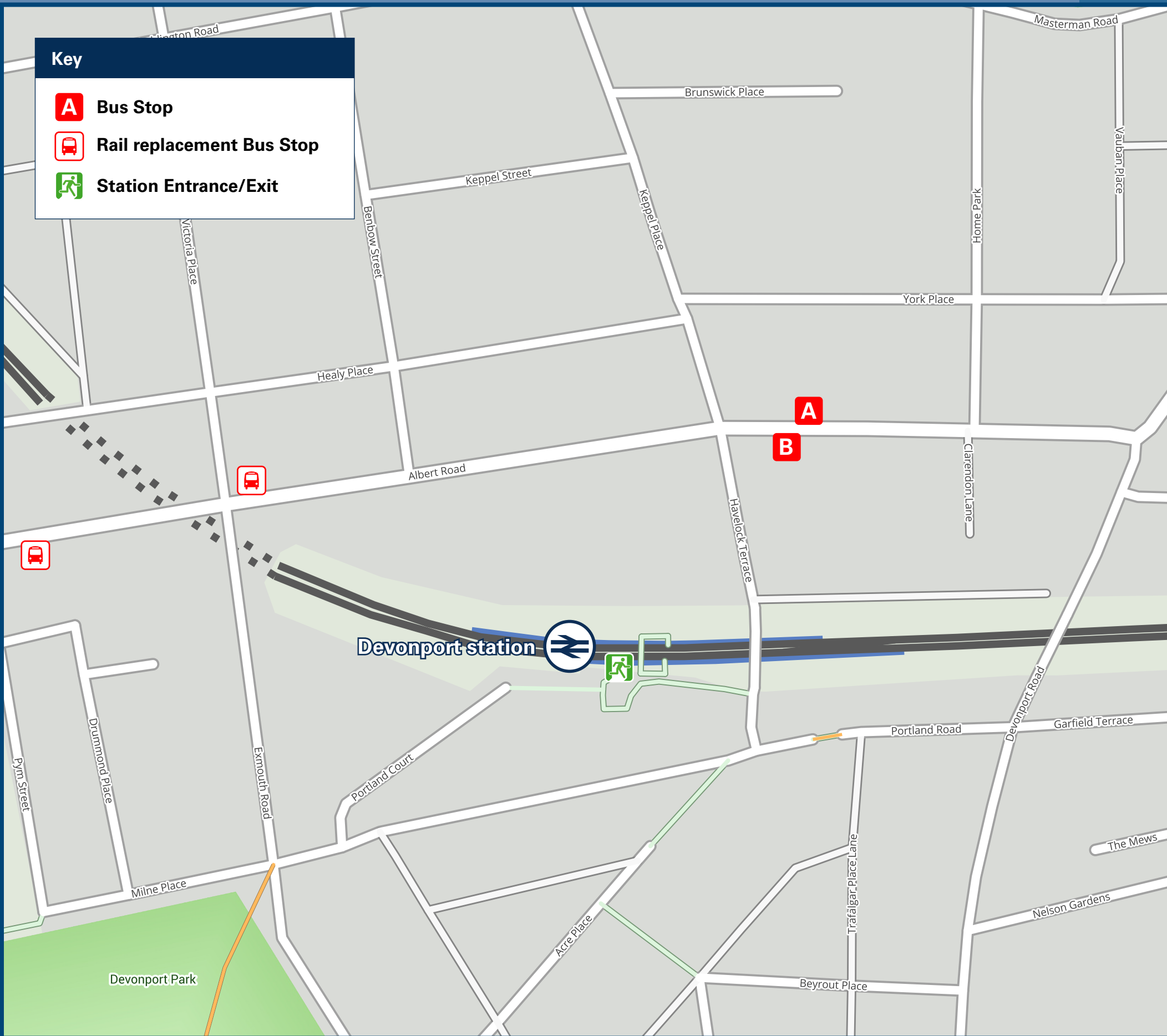




# Devonport Station

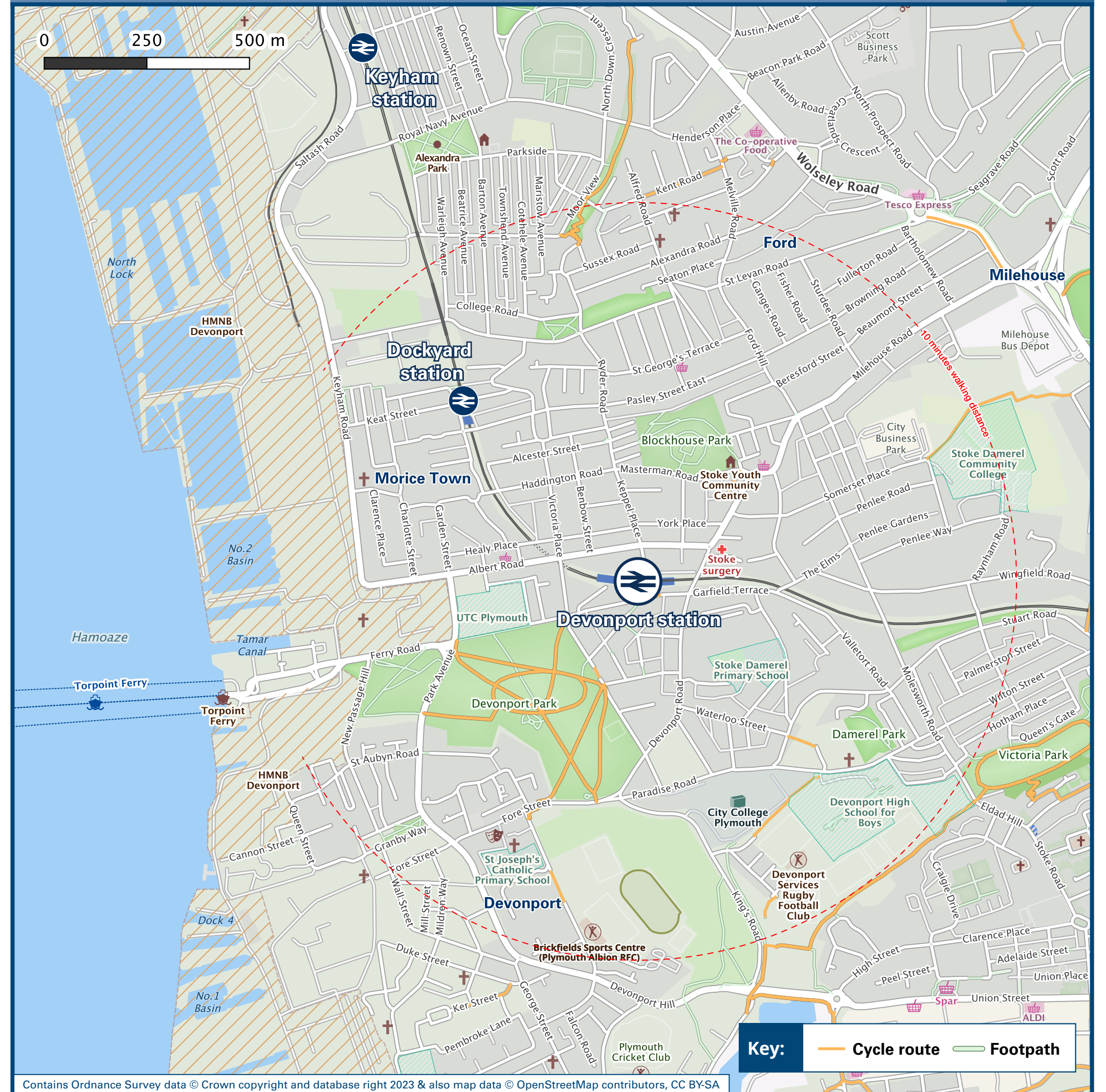
# Onward Travel Information

## Buses



Rail replacement buses/coaches will depart from Albert Road bus stops, adjacent to Exmouth Road.

## Local area map



## Main destinations by bus

(Data correct at November 2023)



DESTINATION	BUS ROUTES	BUS STOP
Antony	70, 70A	B
Cawsand and Whitsand	70, 70A	B
Cremyll and Mount Edgcombe	70, 70A	B
Crownhill	34	A
Devonport	34	B
Derriford Hospital	34	A
Milehouse	34	A
Millbridge	70, 70A	A

DESTINATION	BUS ROUTES	BUS STOP
Millbay	34	B
Plymouth Argyle FC (Home Park)	34	A
Plymouth City Centre	34	B
Plymouth Rail Station	70, 70A	A
Rame Peninsula	70, 70A (via Torpoint Ferry)	B
Royal William Yard	34	B
Stoke Village	34, 70, 70A	A

DESTINATION	BUS ROUTES	BUS STOP
Stonehouse	34	B
Torpoint Ferry (Pottery Quay)	34, 70, 70A	B
Torpoint (HMS Raleigh)	70, 70A Or 34 to Pottery Quay then ferry to Torpoint	B

**Notes**

Bus route 70A operates a Mondays to Saturdays service, only.  
 Bus routes 34 and 70 operate daily services.  
 For bus times please see bus stop timetables or contact Traveline  
 Direct trains operate to this destination from this Station.

### Taxis

Devonport station has no taxi rank or cab office. Advance booking is essential, please consider using the following local operators: (Inclusion of this number doesn't represent any endorsement of the taxi firm)

<b>Tower Cabs Taxis</b> 01752 252 525	<b>Need-A-Cab</b> 01752 666 222	<b>Central Taxis</b> 01752 363 636
--	------------------------------------	---------------------------------------

### Further information about all onward travel

<b>Local Cycle Info</b> <a href="http://plymouth.gov.uk">plymouth.gov.uk</a> <small>For more information about cycle routes.</small>	<b>National Cycle Info</b> <a href="http://sustrans.org.uk">sustrans.org.uk</a> <small>Sustrans is the UK's leading sustainable transport charity.</small>	<b>Bus Times</b> <small>See timetable displays at bus stops.</small> 	<b>NextBuses</b> <small>Find the bus times for your stop.</small> <small>Search for a bus stop by entering a postcode, street &amp; town or a stop name &amp; town.</small>	<b>PlusBus</b> <a href="http://plusbus.info">plusbus.info</a> <small>A discount price 'bus pass' that you buy with your train ticket. It gives you unlimited bus travel around your chosen town, on participating buses.</small>
--	--	---	---	--

### National Rail Enquiries

<b>Online</b> <a href="http://nationalrail.co.uk">nationalrail.co.uk</a>	<b>NRE App</b> Free National Rail Enquiries app for iOS and Android	<b>Social Media</b> <a href="https://www.facebook.com/nationalrailenq">facebook.com/nationalrailenq</a> <a href="https://twitter.com/nationalrailenq">@nationalrailenq</a>	<b>Alert Me</b> <small>You can sign up to Alert Me messages on the National Rail Enquiries website where you can receive train and platform notifications directly to your smart phone.</small> <a href="http://nationalrail.co.uk/alertme">nationalrail.co.uk/alertme</a>	<b>Contact Centre</b> 03457 48 49 50 <small>Calls cost no more than calls to geographic numbers (01 or 02) and may be recorded.</small>	<b>PlusBike</b> <a href="http://nationalrail.co.uk/plusbike">nationalrail.co.uk/plusbike</a> <small>For more information.</small>
---	--	--	--	---	---



This poster shows details of popular destinations and main, frequent bus routes. Additional services may run, so please check with Traveline or see posters at local bus stops. Whilst considerable care has been taken to ensure the information contained on this poster is correct and accurate, National Rail cannot accept responsibility for any loss or inconvenience caused by any errors or omissions, or for loss, damage, injury or inconvenience relating to the cancellation, alteration, delay or diversion of a service. For any feedback, please e-mail [comments@onwardtravelposters.com](mailto:comments@onwardtravelposters.com). Scan this code with your mobile for full station information.