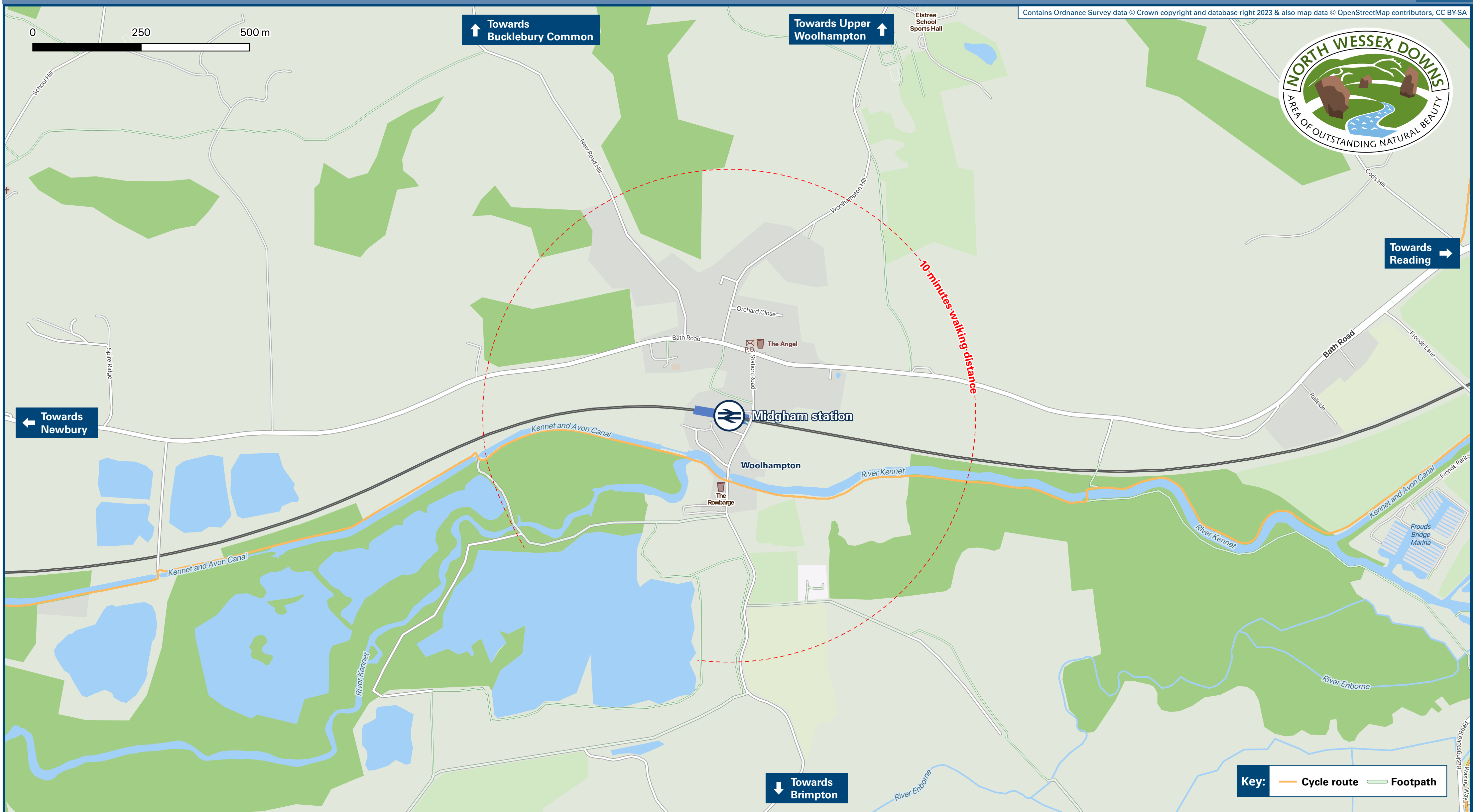




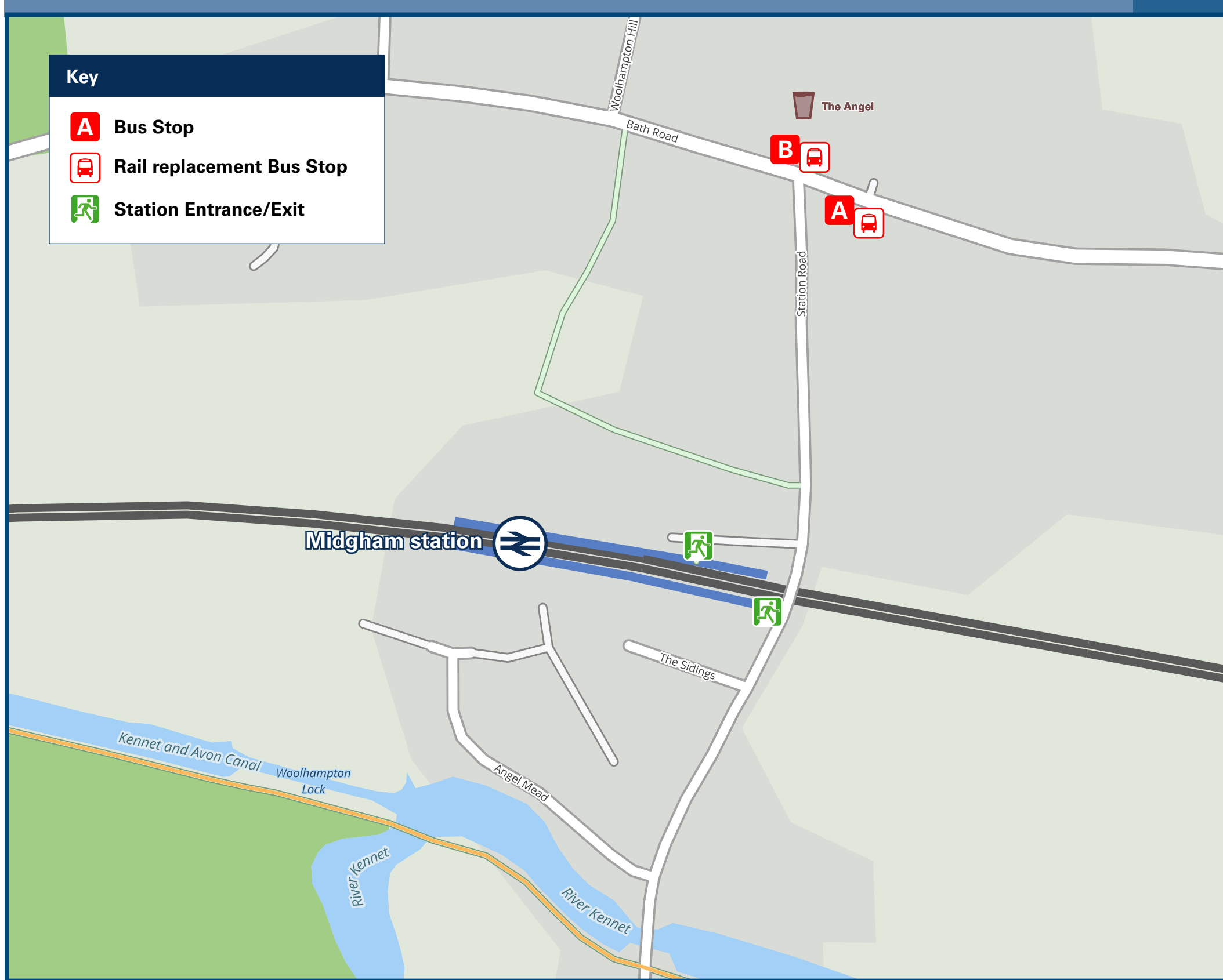
Midgham Station

Onward Travel Information

Local area map



Buses



Rail replacement buses/coaches depart from bus stops on the Bath Road (A4) near the The Angel Public House, stop A towards Newbury and stop B towards Reading.

Main destinations by bus

(Data correct at November 2023)

DESTINATION	BUS ROUTES	BUS STOP
Aldermaston Wharf (for Kennet & Avon Canal)	1 (jet black)	B
Arlington Business Park (Theale)	1 (jet black)	B
Calcot (Sainsbury's)	1 (jet black)	B
Colthrop	1 (jet black)	A
Lower Padworth	1 (jet black)	B
Midgham Village (Bath Road)	1 (jet black)	A
Newbury Town Centre	1 (jet black)	A
Newbury (Turnpike Estate)	1 (jet black)	A
Reading (Prospect Park - Bath Road)	1 (jet black)	B
Reading (Town Centre)	1 (jet black)	B
Thatcham	1 (jet black)	A
Theale	1 (jet black)	B
West Berkshire Community Hospital	1 (jet black)	A

Notes

Bus route 1 (jet black) operates up to every 30 minutes Mondays to Saturdays and an hourly service on Sundays and Public Holidays.
For bus times and other bus enquiries, please contact Traveline on 0871 200 22 33 or contact the bus operator (see below):
Reading Buses (for bus route 1 jet black) call 0118 959 4000.
Direct trains operate to this destination from this station.

Taxis

Midgham station has no taxi rank or cab office. Advance booking is essential, please consider using the following local operators: (Inclusion of this number doesn't represent any endorsement of the taxi firm)

CDC Taxis
01635 866 730

Williams Taxis
01635 869 541

Kennet & Avon Cars
01635 847 853

Further information about all onward travel

Local Cycle Info westberks.gov.uk For more information about cycle routes.	National Cycle Info sustrans.org.uk Sustrans is the UK's leading sustainable transport charity.	Bus Times See timetable displays at bus stops. www.traveline.info 0871 200 22 33 calls cost 12p per minute plus your phone company's access charge	NextBuses .mobi Find the bus times for your stop. Search for a bus stop by entering a postcode, street & town or a stop name & town.	PlusBus plusbus.info A discount price "bus pass" that you buy with your train ticket. It gives you unlimited bus travel around your chosen town, on participating buses.
---	--	---	---	---

National Rail Enquiries

Online nationalrail.co.uk	NRE App Free National Rail Enquiries app for iOS and Android	Social Media facebook.com/nationalrailenq @nationalrailenq	Alert Me You can sign up to Alert Me messages on the National Rail Enquiries website where you can receive train and platform notifications directly to your smart phone. nationalrail.co.uk/alertme	Contact Centre 03457 48 49 50 Calls cost no more than calls to geographic numbers (01 or 02) and may be recorded.	PlusBike nationalrail.co.uk/plusbike For more information.
-------------------------------------	--	---	---	--	---



This poster shows details of popular destinations and main, frequent bus routes. Additional services may run, so please check with Traveline or see posters at local bus stops. Whilst considerable care has been taken to ensure the information contained on this poster is correct and accurate, National Rail cannot accept responsibility for any loss or inconvenience caused by any errors or omissions, or for loss, damage, injury or inconvenience relating to the cancellation, alteration, delay or diversion of a service. For any feedback, please e-mail comments@onwardtravelposters.com

Scan this code with your mobile for full station information.