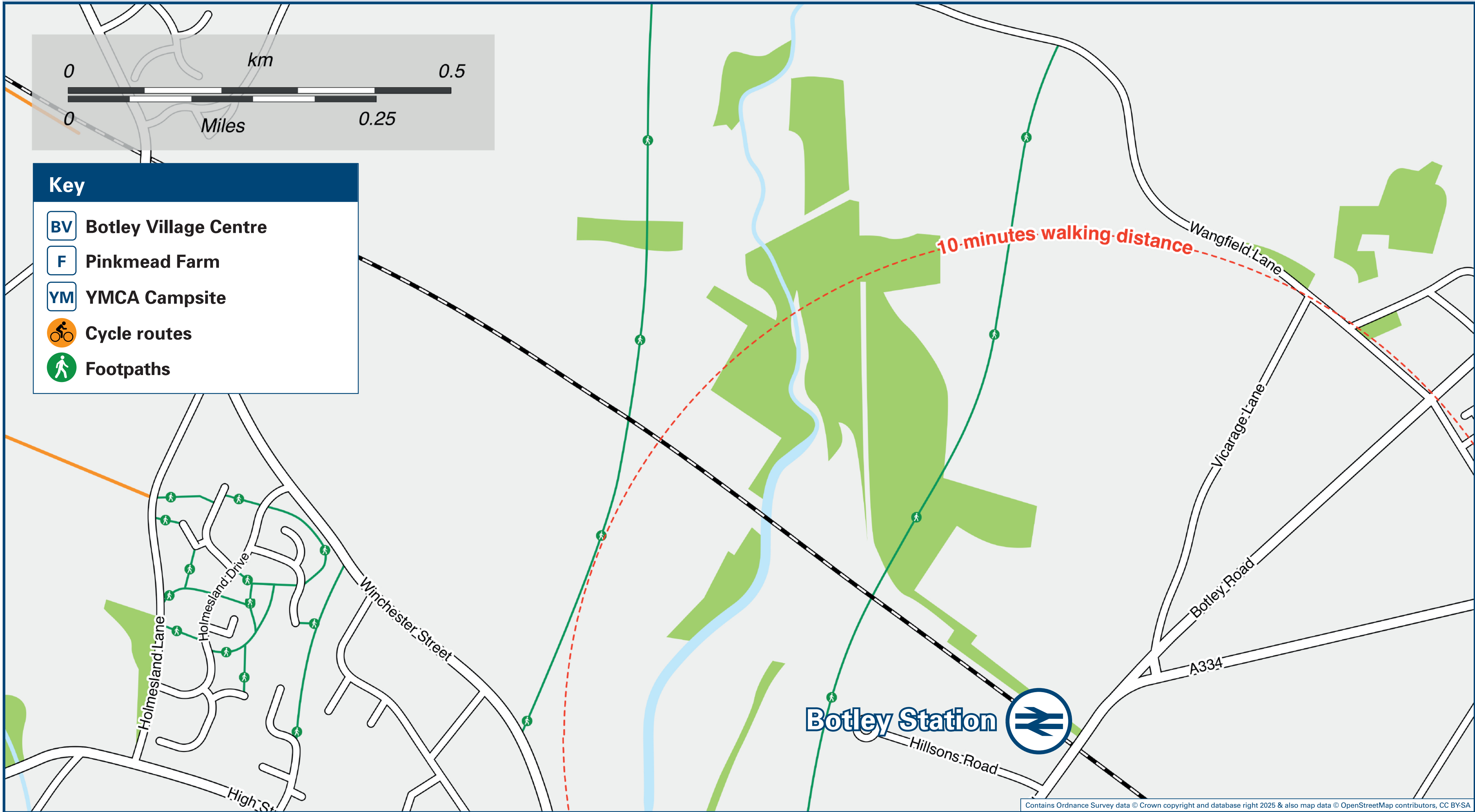




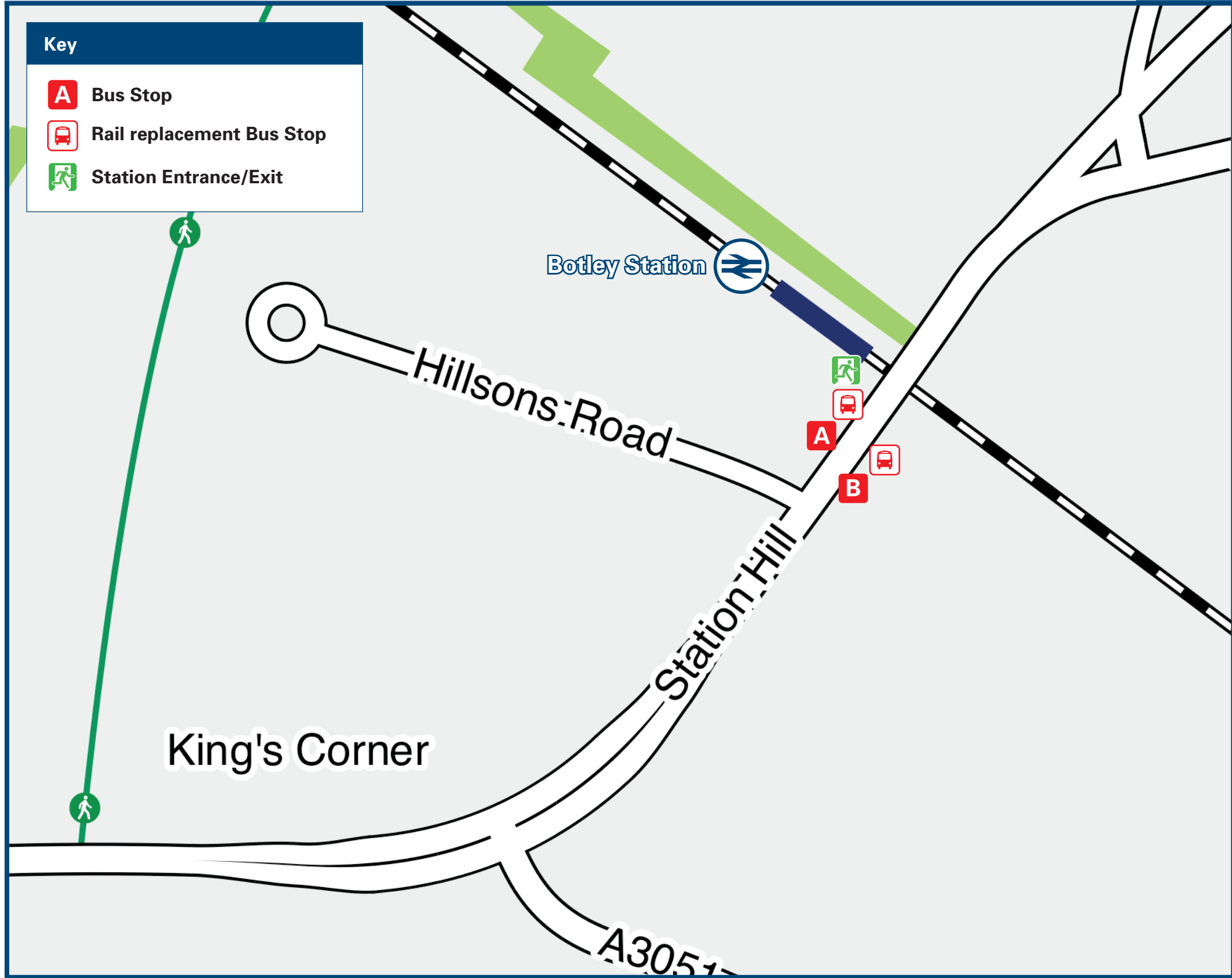
Botley Station

Onward Travel Information

Local area map



Buses



Rail replacement buses depart Station Hill (A334): To Eastleigh from bus stop **B** outside Railway Inn Pub. To Fareham from bus stop **A** opposite Railway Inn Pub.

Information

(Data correct at November 2025)



THERE ARE NO REGULAR BUS SERVICES SERVING BOTLEY RAILWAY STATION.

Botley Station has no taxi rank or cab office. Advance booking is essential, please consider using the following local operators: (Inclusion of this number doesn't represent any endorsement of the taxi firm)

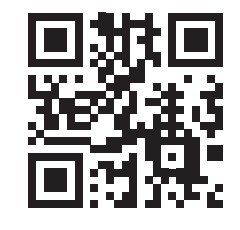
Millers Private Hire
01489 788 888

Alicia's Cars
07588 666 465

Eastleigh Cab Company
023 8065 1111

Further information about all onward travel

Local Cycle Info	National Cycle Info	Bus Times	PlusBus
eastleigh.gov.uk For more information about cycle routes.	walkwheelcycletrust.org.uk	See timetable displays at bus stops. www.traveline.info 0871 200 22 33 <small>calls cost 15p per minute plus your phone company's access charge</small>	plusbus.info PlusBus is a discount price 'bus pass' that you buy with your train ticket. It gives you unlimited bus travel around your chosen town, on participating buses. Visit www.plusbus.info



National Rail Enquiries

Online	NRE App	Social Media	Alert Me	Contact Centre	PlusBike
nationalrail.co.uk	Free National Rail Enquiries app for iOS and Android	facebook.com/nationalrailenq @nationalrailenq	You can sign up to Alert Me messages on the National Rail Enquiries website where you can receive train and platform notifications directly to your smart phone. nationalrail.co.uk/alertme	03457 48 49 50 Calls cost no more than calls to geographic numbers (01 or 02) and may be recorded.	nationalrail.co.uk/plusbike For more information.



National Rail
Britain's train companies working together



Whilst considerable care has been taken to ensure the information contained on this poster is correct and accurate, National Rail cannot accept responsibility for any loss or inconvenience caused by any errors or omissions, or for loss, damage, injury or inconvenience caused. For any feedback, please e-mail comments@onwardtravelposters.com

Scan this code with your mobile for full station information.