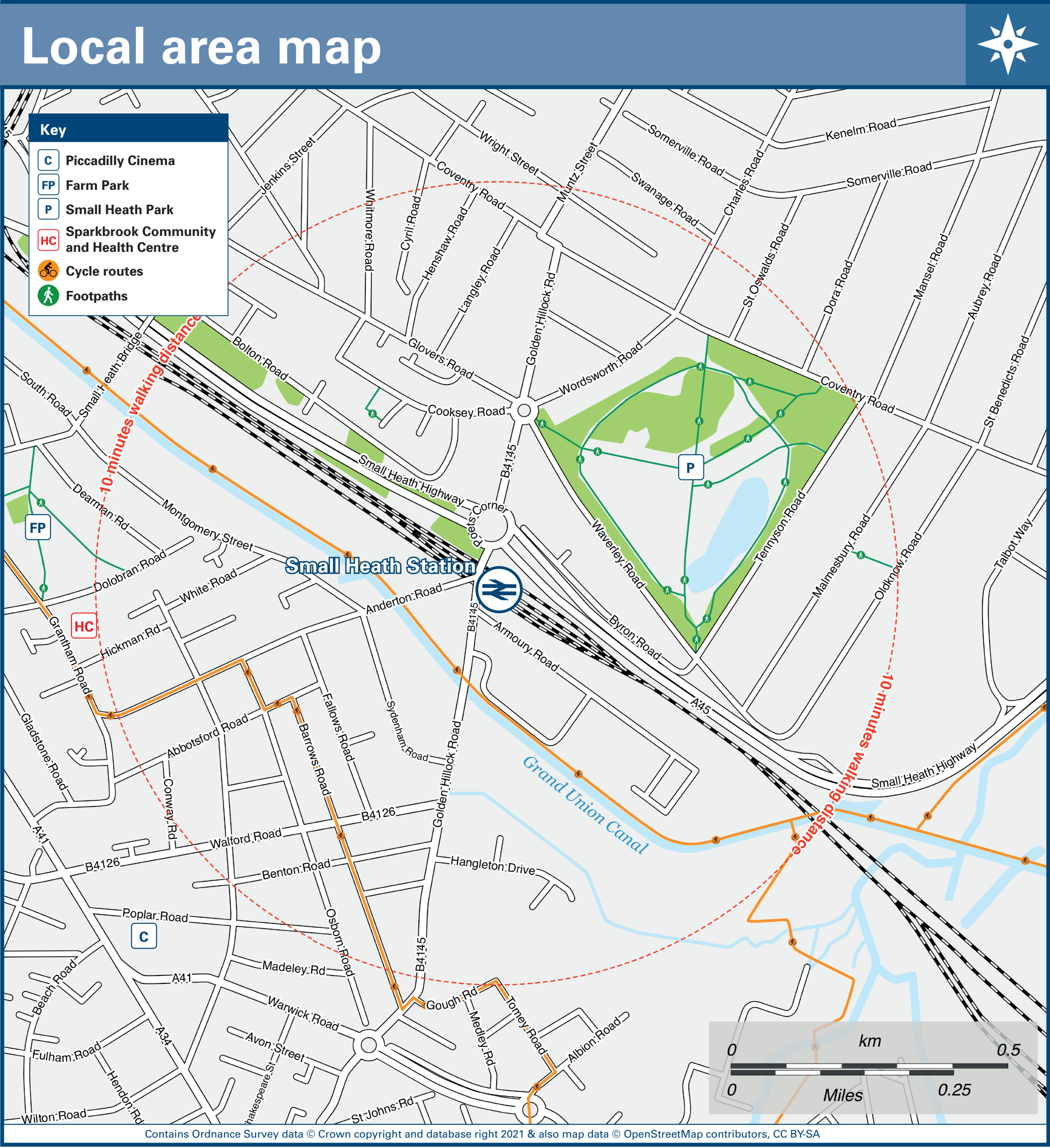
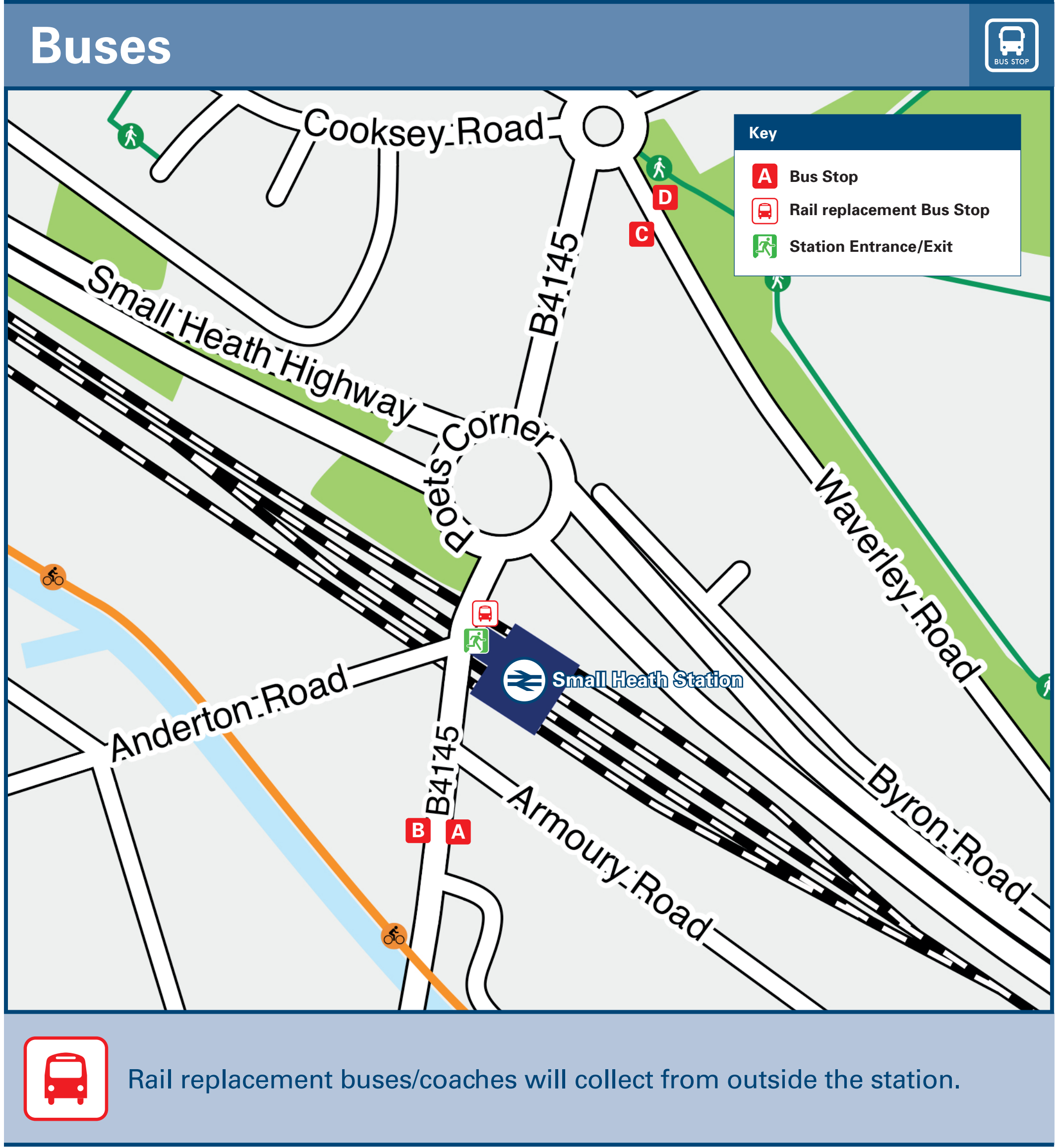




Small Heath Station

Onward Travel Information



Main destinations by bus			(Data correct at July 2023)		
DESTINATION	BUS ROUTES	BUS STOP	DESTINATION	BUS ROUTES	BUS STOP
Adderley Park	8A	B	Highgate	8C	A
Aston Cross	8A	B	Hobs Moat	X2	D
Birmingham	X1, X2	C	Hockley	8C	A
Birmingham Airport	X1	D	Jewellery Quarter	8C	A
Bordesley	X1	C	Ladywood	8C	A
Bordesley Green	8A	B	Lee Bank	8C	A
Duddeston	8A	B	Lode Heath	X2	D
Elmdon	X1	D	Lozells	8C	A
Five Ways	8C	A	Lyndon End	X1, X2	D
Hay Mills	X1	D	Meriden Green	X1	D
DESTINATION	BUS ROUTES	BUS STOP	DESTINATION	BUS ROUTES	BUS STOP
National Exhibition Centre	X1	D			
Nechells Green	8A	B			
Newtown	8A	B			
Saltley	8A	B			
Solihull Hospital	X2	D			
Solihull Town Centre	X2	D			
South Yardley	X1, X2	D			
Sparkbrook	8C	A			
Notes					
Bus routes 8A, 8C, X1 and X2 run daily services.					

Taxis

Small Heath Station has no taxi rank or cab office. Advance booking is essential, please consider using the following local operators: (Inclusion of this number doesn't represent any endorsement of the taxi firm)

AK Cars

0121 773 6666

On Time Cars

0121 764 6666

Five Star Cars

0121 685 9999

Further information about all onward travel

Local Cycle Info

www.tfwm.org.uk/plan-your-journey/ways-to-travel/cycling-and-walking
For more information about cycle routes.

National Cycle Info

sustrans.org.uk
Sustrans is the UK's leading sustainable transport charity.

Bus Times

See timetable displays at bus stops.
www.traveline.info
0871 200 22 33
call cost 12p per minute plus your phone company's access charge

NextBuses

Find the bus times for your stop.
Search for a bus stop by entering a postcode, street & town or a stop name & town.

PlusBus

plusbus.info
A discount price 'bus pass' that you buy with your train ticket. It gives you unlimited bus travel around your chosen town, on participating buses.

National Rail Enquiries					
Online	NRE App	Social Media	Alert Me	Contact Centre	PlusBike
nationalrail.co.uk	Free National Rail Enquiries app for iOS and Android	facebook.com/nationalrailenq @nationalrailenq	You can sign up to Alert Me messages on the National Rail Enquiries website where you can receive train and platform notifications directly to your smart phone. nationalrail.co.uk/alertme	03457 48 49 50 Calls cost no more than calls to geographic numbers (01 or 02) and may be recorded.	nationalrail.co.uk/plusbike For more information.