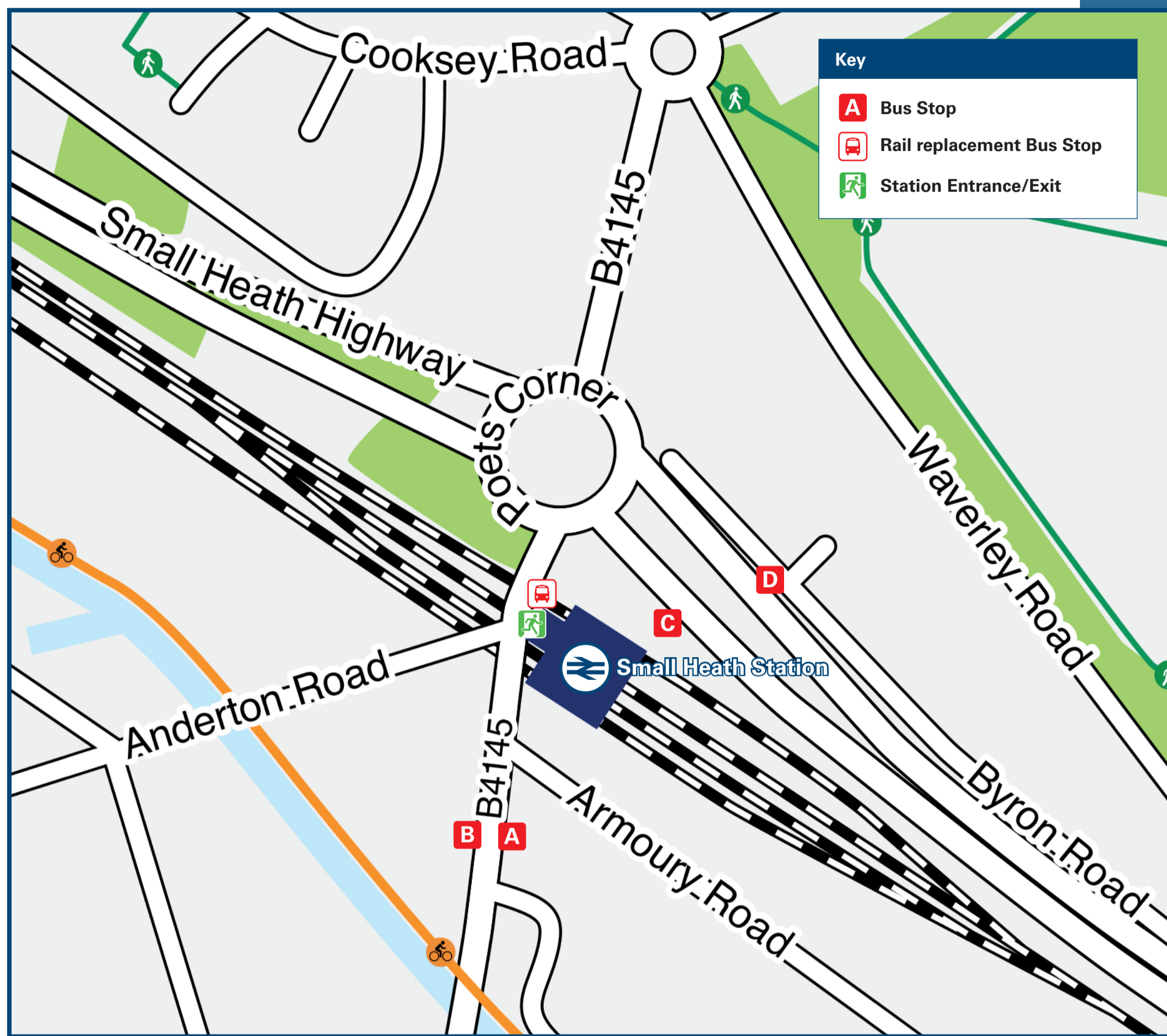




Small Heath Station

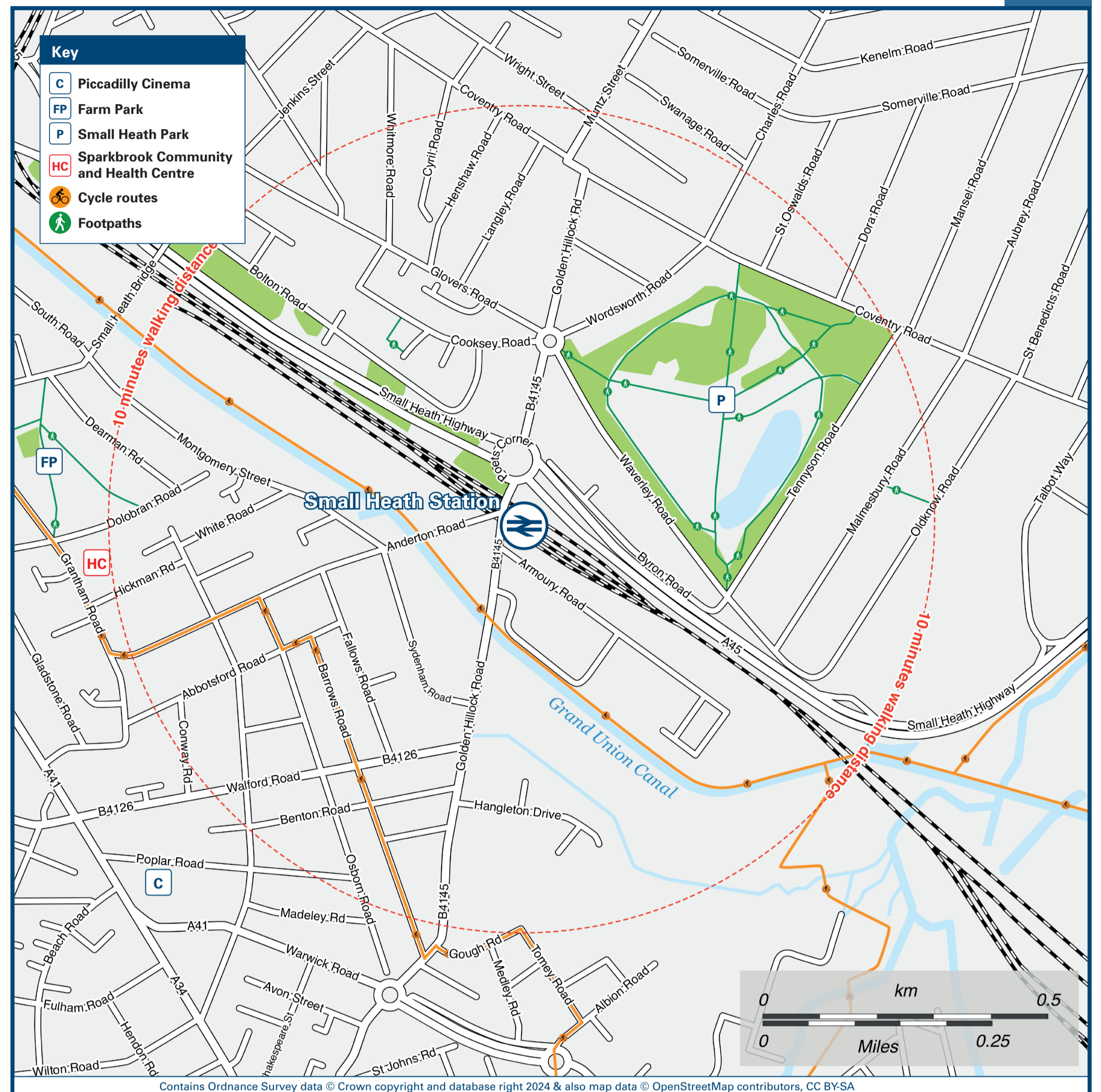
Onward Travel Information

Buses



Rail replacement buses/coaches will collect from outside the station.

Local area map



Main destinations by bus

(Data correct at July 2024)

DESTINATION	BUS ROUTES	BUS STOP
Adderley Park	8A	B
Aston Cross	8A	B
Birmingham	X1, X2	C
Birmingham Airport	X1	D
Bordesley	X1	C
Bordesley Green	8A	B
Duddeston	8A	B
Elmdon	X1	D
Five Ways	8C	A
Hay Mills	X1	D
Highgate	8C	A

DESTINATION	BUS ROUTES	BUS STOP
Hobs Moat	X2	D
Hockley	8C	A
Jewellery Quarter	8C	A
Ladywood	8C	A
Lee Bank	8C	A
Lode Heath	X2	D
Lozells	8C	A
Lyndon End	X1, X2	D
Meriden Green	X1	D
National Exhibition Centre	X1	D
Nechells Green	8A	B

DESTINATION	BUS ROUTES	BUS STOP
Newtown	8A	B
Saltley	8A	B
Solihull Hospital	X2	D
Solihull Town Centre	X2	D
South Yardley	X1, X2	D
Sparkbrook	8C	A

Notes

Bus routes 8A, 8C, X1 and X2 run daily services.

Taxis

Small Heath Station has no taxi rank or cab office. Advance booking is essential, please consider using the following local operators: (Inclusion of this number doesn't represent any endorsement of the taxi firm)

Five Star Cars
0121 685 9999

Birmingham Taxis
0121 702 2000

Ace Cars
0121 247 7777

Further information about all onward travel

Local Cycle Info www.tfwm.org.uk/plan-your-journey/ways-to-travel/cycling-and-walking For more information about cycle routes.	National Cycle Info sustrans.org.uk Sustrans is the UK's leading sustainable transport charity.	Bus Times See timetable displays at bus stops. www.traveline.info 0871 200 22 33 call cost 13p per minute plus your phone company's access charge	NextBuses Find the bus times for your stop. Search for a bus stop by entering a postcode, street & town or a stop name & town.	PlusBus plusbus.info A discount price 'bus pass' that you buy with your train ticket. It gives you unlimited bus travel around your chosen town, on participating buses.
---------------------------------------------------------------------------------------------------------------------------------------------------------------------------------------------------------------------------------------	---------------------------------------------------------------------------------------------------------------------------------------------------	------------------------------------------------------------------------------------------------------------------------------------------------------------------------------------------------------------------	--------------------------------------------------------------------------------------------------------------------------------------------------------	-------------------------------------------------------------------------------------------------------------------------------------------------------------------------------------------------------------------------

National Rail Enquiries

Online nationalrail.co.uk	NRE App Free National Rail Enquiries app for iOS and Android	Social Media facebook.com/nationalrailenq @nationalrailenq	Alert Me You can sign up to Alert Me messages on the National Rail Enquiries website where you can receive train and platform notifications directly to your smart phone. nationalrail.co.uk/alertme	Contact Centre 03457 48 49 50 Calls cost no more than calls to geographic numbers (01 or 02) and may be recorded.	PlusBike nationalrail.co.uk/plusbike For more information.
-----------------------------------------------------------------------------	------------------------------------------------------------------------	-------------------------------------------------------------------------	-------------------------------------------------------------------------------------------------------------------------------------------------------------------------------------------------------------------------------------------------------------------	--------------------------------------------------------------------------------------------------------------------------------	--------------------------------------------------------------------------------------------------------------------------



This poster shows details of popular destinations and main, frequent bus routes. Additional services may run, so please check with Traveline or see posters at local bus stops. Whilst considerable care has been taken to ensure the information contained on this poster is correct and accurate, National Rail cannot accept responsibility for any loss or inconvenience caused by any errors or omissions, or for loss, damage, injury or inconvenience relating to the cancellation, alteration, delay or diversion of a service. For any feedback, please e-mail comments@onwardtravelposters.com

Scan this code with your mobile for full station information.