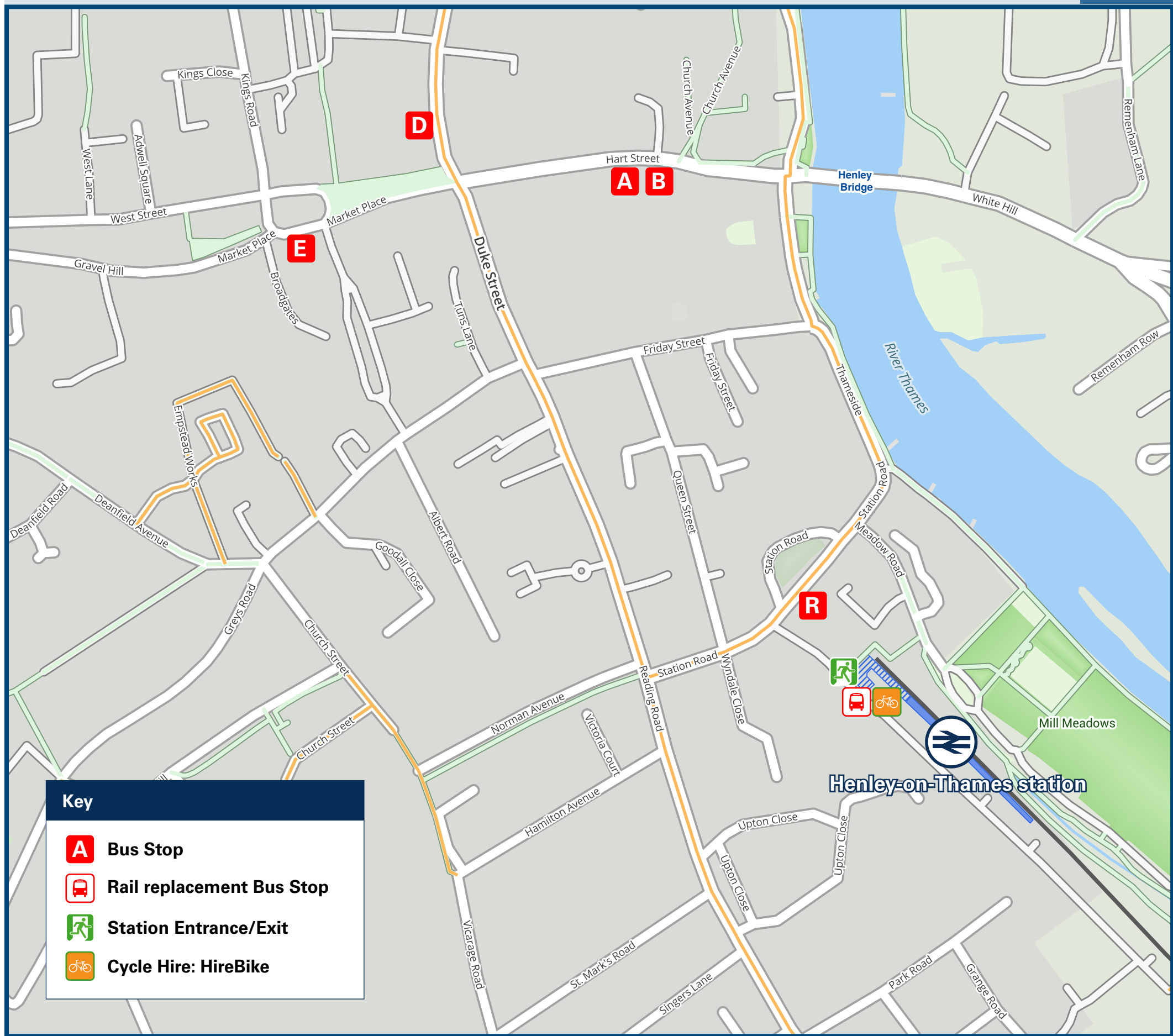




Henley-on-Thames Station

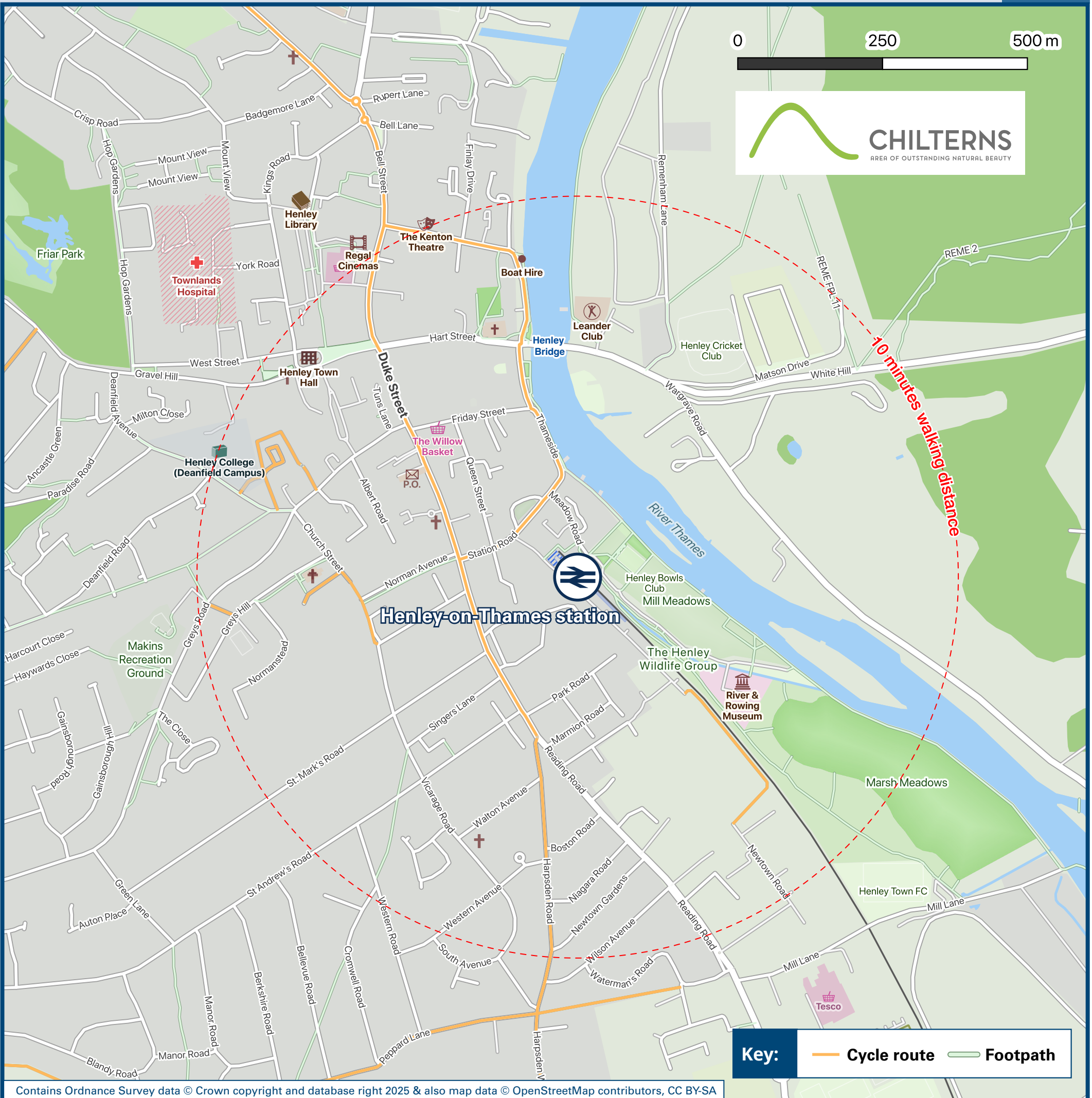
Onward Travel Information

Buses



Rail replacement services depart from outside the Station building.

Local area map



Main destinations by bus

(Data correct at January 2026)



DESTINATION	BUS ROUTES	BUS STOP
Abingdon	33	A, D
Binfield Heath	28A#	R
Brightwell cum Sotwell	33	A, D
Caversham	28, 28A#	R
Cressex	850	D
Crowmarsh Gifford	33	A, D
Culham	33	A, D
Danesfield	850	D
Didcot (Serves Didcot Parkway Station) ⚡	33	A, D
Dunsden Green	28A#	R
Henley-on-Thames (Tesco, Reading Road)	28, 28A#	R
High Wycombe	850	D
Lower Caversham	28, 28A#	R

DESTINATION	BUS ROUTES	BUS STOP
Lower Shiplake ⚡	28, 28A#	R
Marlow	850	D
Marlow Bottom	850	D
Medmenham	850	D
Milton	33	A, D
Milton Park	33	A, D
Nettlebed	33	A, D
Nuffield	33	A, D
Playhatch (Garden Centre)	28, 28A#	R
Reading ⚡	28, 28A# 850	R A
Shiplake ⚡	28, 28A#	R
Sutton Courtenay	33	A, D

DESTINATION	BUS ROUTES	BUS STOP
Swiss Farm Caravan Park	850	D
Twyford ⚡	850	A
Wallingford (Market Place) ⚡	33	A, D
Wargrave ⚡	850	A

Notes

Additional local bus services around Henley-on-Thames (The Henley Hopper) operate limited Tuesdays, Wednesdays and Thursdays only services, from bus stop (E) Market Place.

Bus routes 28, 33 and 850 operate daily services.

For bus times and days of operation please contact Traveline on www.traveline.info or call: 0871 200 22 33

⚡ Direct trains operate from this station to this destination.

⚡ For connecting train services to Didcot Parkway, Maidenhead and Reading, please change trains at Twyford.

⚡ Mondays to Saturdays alight bus at Wallingford Lidl for the Cholsey & Wallingford Railway and on Sundays alight bus at Wallingford Market Place for a 10 minutes walk.

Bus route 28A operates a limited daytime service on Mondays to Saturdays, only. No evenings or Sundays service.

Bike Hire bromptondock.co.uk 020 8232 3931 (text 3145 to reserve bike)

AONB The Chilterns (AONB) www.chilternsaonb.org

Taxis

Henley-on-Thames station is served by a taxi rank or cab office. Check availability before travelling, and pre-book if necessary. Please consider using the following local operators: (Inclusion of this number doesn't represent any endorsement of the taxi firm)

Henley Taxis
01491 574 222

Chiltern Taxis
01491 578 899

Million Cars
01491 414 140

Further information about all onward travel

Local Cycle Info	National Cycle Info	Bus Times	PlusBus
oxfordshire.gov.uk For more information about cycle routes.	walkwheelcycletrust.org.uk	See timetable displays at bus stops. www.traveline.info 0871 200 22 33 calls cost 15p per minute plus your phone company's access charge	 plusbus.info PlusBus is a discount price 'bus pass' that you buy with your train ticket. It gives you unlimited bus travel around your chosen town, on participating buses. Visit www.plusbus.info

National Rail Enquiries

Online	NRE App	Social Media	Alert Me	Contact Centre	PlusBike
nationalrail.co.uk	Free National Rail Enquiries app for iOS and Android	facebook.com/nationalrailenq @nationalrailenq	You can sign up to Alert Me messages on the National Rail Enquiries website where you can receive train and platform notifications directly to your smart phone. nationalrail.co.uk/alertme	03457 48 49 50 Calls cost no more than calls to geographic numbers (01 or 02) and may be recorded.	nationalrail.co.uk/plusbike For more information.



National Rail
Britain's train companies working together



This poster shows details of popular destinations and main, frequent bus routes. Additional services may run, so please check with Traveline or see posters at local bus stops. Whilst considerable care has been taken to ensure the information contained on this poster is correct and accurate, National Rail cannot accept responsibility for any loss or inconvenience caused by any errors or omissions, or for loss, damage, injury or inconvenience relating to the cancellation, alteration, delay or diversion of a service. For any feedback, please e-mail comments@onwardtravelposters.com

Scan this code with your mobile for full station information.