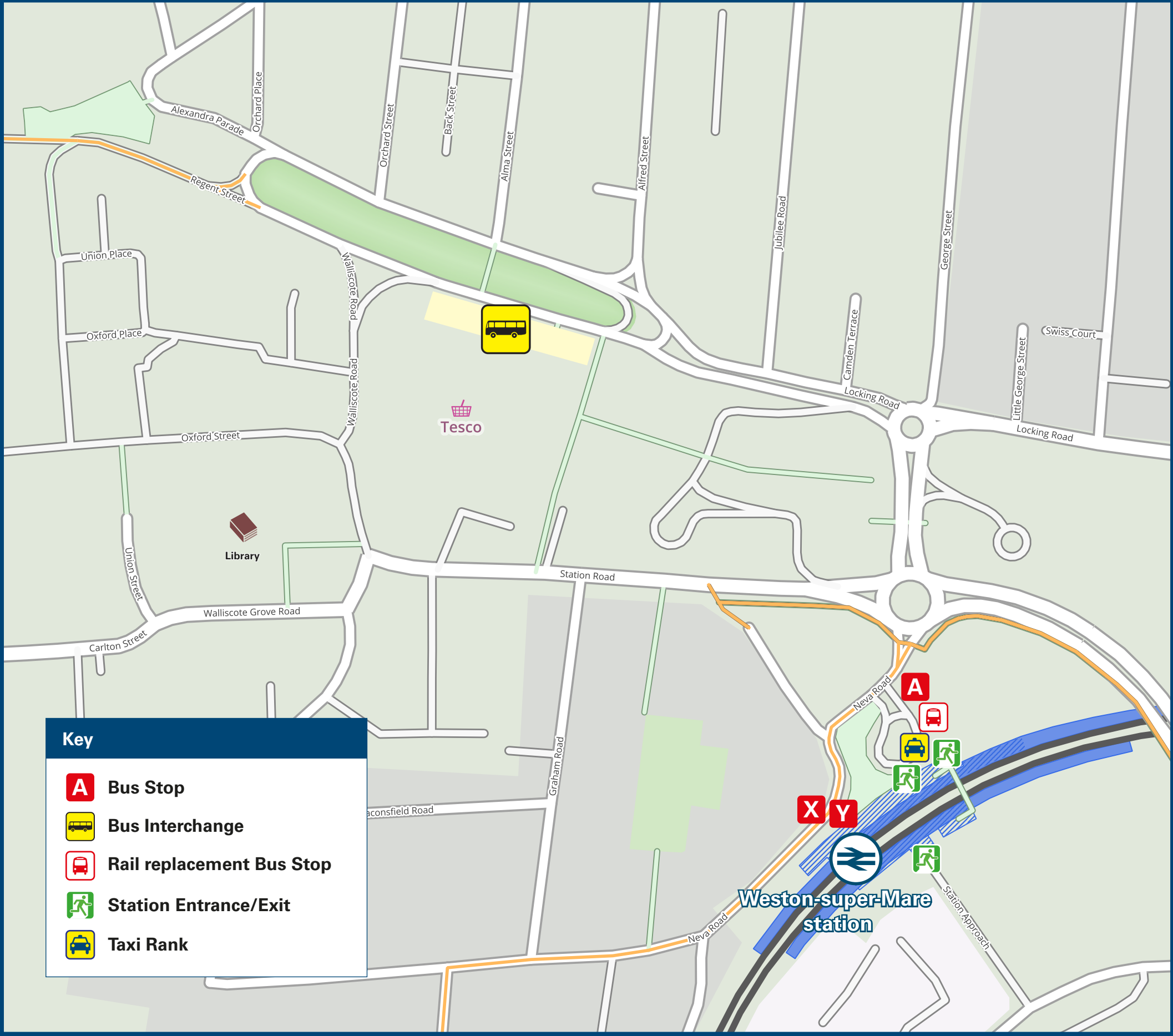




# Weston-super-Mare Station

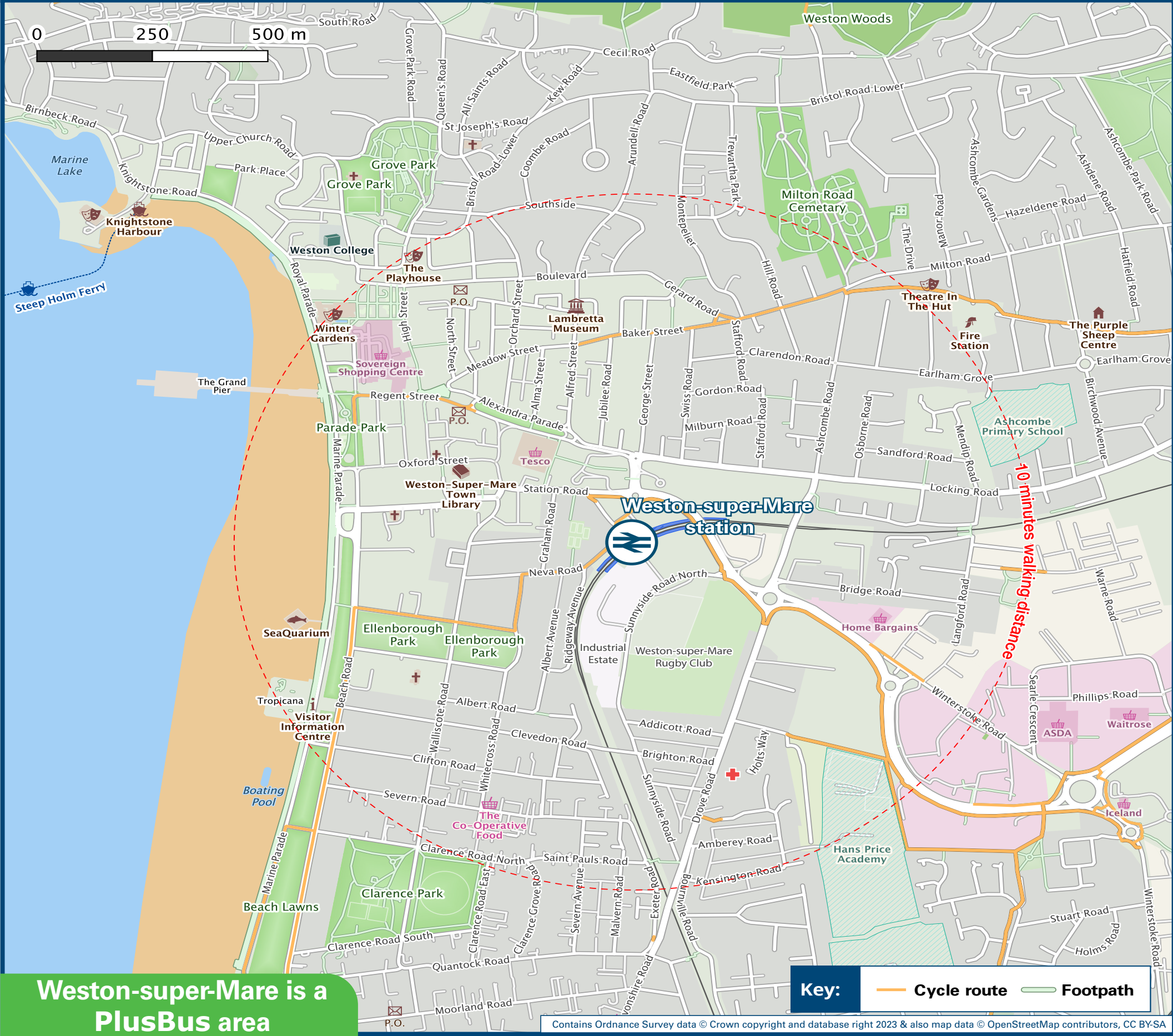
## Onward Travel Information

### Buses and Taxis



Rail replacement services depart from the Station front.

### Local area map



Weston-super-Mare is a PlusBus area



PlusBus is a discount price 'bus pass' that you buy with your train ticket. It gives you unlimited bus travel around your chosen town, on participating buses. Visit [www.plusbus.info](http://www.plusbus.info)

### Main destinations by bus

(Data correct at November 2023)



DESTINATION	BUS ROUTES	BUS STOP
Ashcombe Park (Milton Road)	7	X
Ashcombe Park (Upper Bristol Road)	6	Interchange F
Banwell	125	Interchange K
Berrow	20	Y
Bleadon (Anchor Inn, for Riverside Holiday Park)	20	Y
Bleadon (Village Centre)	WESTlink#	A
Bleadon Hill (Bridgwater Road)	20	Y
Bleadon Hill (Burnham Drive)	WESTlink#	A
Bournville Estate	X1	Interchange I
Brean (Village Hall & Leisure Park)	20	Y
Bristol Airport (Bus Station)	A3	A
Burnham-on-Sea	20	Y
Churchill	125	Interchange K
Cleeve	A3	A
Clevedon	X5	Interchange D
Congresbury	A3	A
	X1	Interchange C
	X5	Interchange D
Coronation Estate (Loxton Road Shops)	7	Y
Grove Park (Quarry/South Road)	X5	Interchange K
Haywood Village	7	Y
Hutton	10+, 'WESTlink#	A
Kewstoke	1	A
Langford	125	Interchange K
	7	Y
Locking (The Helicopter Museum)	125	Interchange K
Locking Castle (Bransby Way)	X5	Interchange D
Locking Parklands (Anson Road)	7	Y
Locking Village (Elm Tree Road)	125	Interchange K

DESTINATION	BUS ROUTES	BUS STOP
Lymsham	20	Y
Mead Vale (Verbena Way)	6	Interchange F
Milton (Locking Road)	A3	A
	X1	Interchange C
	X5	Interchange D
Milton (Milton Road)	7	X
North Worle	7	X
Oldmixon	7	Y
Portishead	X5	Interchange D
Puxton Park (Farm Shop & Adventure Park)	X1	Interchange C
	X5	Interchange D
Sand Bay (for Sand Bay Holiday Village)	1	A
Sandford (for Sandford Station Heritage Centre)	125	Interchange K
	A3	A
St George's	X1	Interchange C
	X5	Interchange D
Uphill (Weston General Hospital)	7, 20	Y
	10+	A
West Wick	6	Interchange F
Weston College (Knighstone Campus)	1	A
	7	X
Weston College (University Campus)	7	Y
Weston-in-Gordano	X5	Interchange D
Weston-super-Mare (Interchange/Regent Street)	1, A3	A
	7, 20	X
Weston-super-Mare (Seafront/Grand Pier)	1	A
Weston-super-Mare Local On-Demand Zone @	WESTlink#	A
Winscombe	125	Interchange K

DESTINATION	BUS ROUTES	BUS STOP
	A3	A
	X1	Interchange C
	X5	Interchange D
	6	Interchange F
	7	X
Worle		
Worlebury	WESTlink#	A
Wrington	125	Interchange K
Yatton	X5	Interchange D

#### Notes

● **PlusBus** destination, please see below for details.

Bus routes 1(Winter), 20(Winter), 125 and X5 operate Mondays to Saturdays only. No service on Sundays or Bank Holidays.

Bus routes 1(Summer), 6, 7, 20(Summer), A3 and X1 operate daily.

For bus times please see bus stop timetables at this station or at the Interchange or contact Traveline on [www.traveline.info](http://www.traveline.info), or call: 0871 200 22 33

Plusbus tickets are valid only within the Weston-super-Mare Plusbus zone on First Buses and Stagecoach.

● Direct trains operate to this destination from this station.

● It's a 5 minutes walk to Weston-super-Mare Interchange and a 15 minutes walk to Weston-super-Mare Seafront and Grand Pier from this station, see maps for walking routes.

+ Bus route 10 operates college days Mondays to Fridays at 10:41, 11:41, 12:51, 13:51 & 14:51 only.

# WESTlink' is an on-demand bus service for North Somerset. This service runs Mondays to Saturdays 7am-7pm except bank holidays. To book a journey using the App, download the 'WESTlink' App via the Apple App Store or Google Play by searching the 'WESTlink' and create an account, alternatively passengers can phone 0117 457 8561.

@ WESTlink' on-demand bus service, for local places in the Weston-super-Mare area zone not served by frequent regular bus services. Contact 0117 457 8561 for more information.

### Taxis

Weston-super-Mare is a major station where taxis are usually available on a rank. Advance booking is not normally necessary, unless arriving early in the morning or late at night. Operators who may accept bookings include: (Inclusion of this number doesn't represent any endorsement of the taxi firm)

**Apple Central Taxis**  
01934 666 666

**A2B Taxis**  
01934 207 200

**1st Ace Cars**  
01934 811 111

#### Further information about all onward travel

Local Cycle Info	National Cycle Info	Bus Times	NextBuses	PlusBus
<a href="http://www.travelwest.info">www.travelwest.info</a> For more information about cycle routes.	<a href="http://sustrans.org.uk">sustrans.org.uk</a> Sustrans is the UK's leading sustainable transport charity.	See timetable displays at bus stops.  <a href="http://www.traveline.info">www.traveline.info</a> 0871 200 22 33 calls cost 15p per minute plus your phone company's access charge	 Find the bus times for your stop. Search for a bus stop by entering a postcode, street & town or a stop name & town.	 <a href="http://plusbus.info">plusbus.info</a> A discount price 'bus pass' that you buy with your train ticket. It gives you unlimited bus travel around your chosen town, on participating buses.

#### National Rail Enquiries

Online	NRE App	Social Media	Alert Me	Contact Centre	PlusBike
<a href="http://nationalrail.co.uk">nationalrail.co.uk</a>	Free National Rail Enquiries app for iOS and Android	<a href="https://facebook.com/nationalrailenq">facebook.com/nationalrailenq</a> @nationalrailenq	You can sign up to Alert Me messages on the National Rail Enquiries website where you can receive train and platform notifications directly to your smart phone. <a href="http://nationalrail.co.uk/alertme">nationalrail.co.uk/alertme</a>	<b>03457 48 49 50</b> Calls cost no more than calls to geographic numbers (01 or 02) and may be recorded.	<a href="http://nationalrail.co.uk/plusbike">nationalrail.co.uk/plusbike</a> For more information.



**National Rail**  
Britain's train companies working together



This poster shows details of popular destinations and main, frequent bus routes. Additional services may run, so please check with Traveline or see posters at local bus stops. Whilst considerable care has been taken to ensure the information contained on this poster is correct and accurate, National Rail cannot accept responsibility for any loss or inconvenience caused by any errors or omissions, or for loss, damage, injury or inconvenience relating to the cancellation, alteration, delay or diversion of a service. For any feedback, please e-mail [comments@onwardtravelposters.com](mailto:comments@onwardtravelposters.com)

Scan this code with your mobile for full station information.