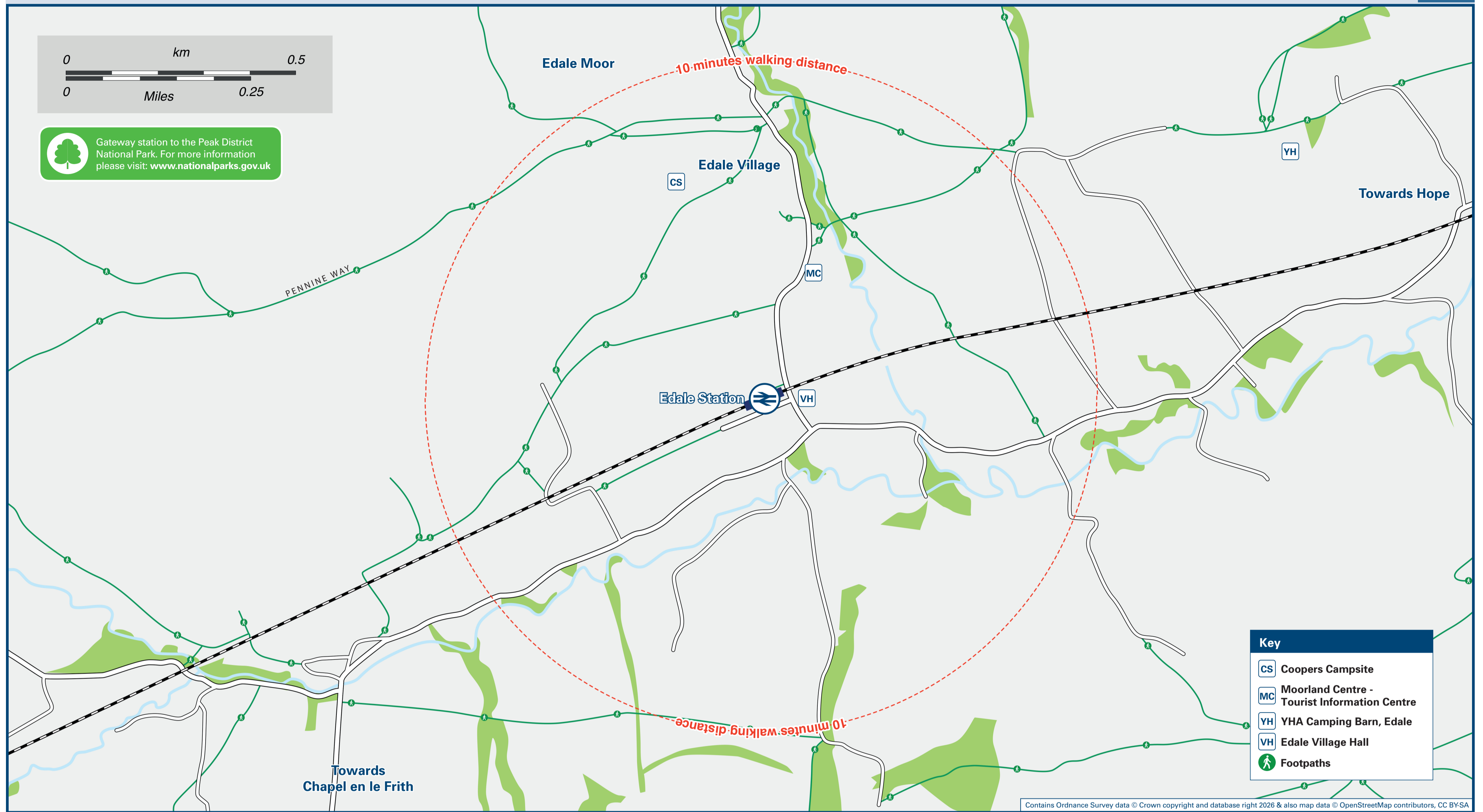




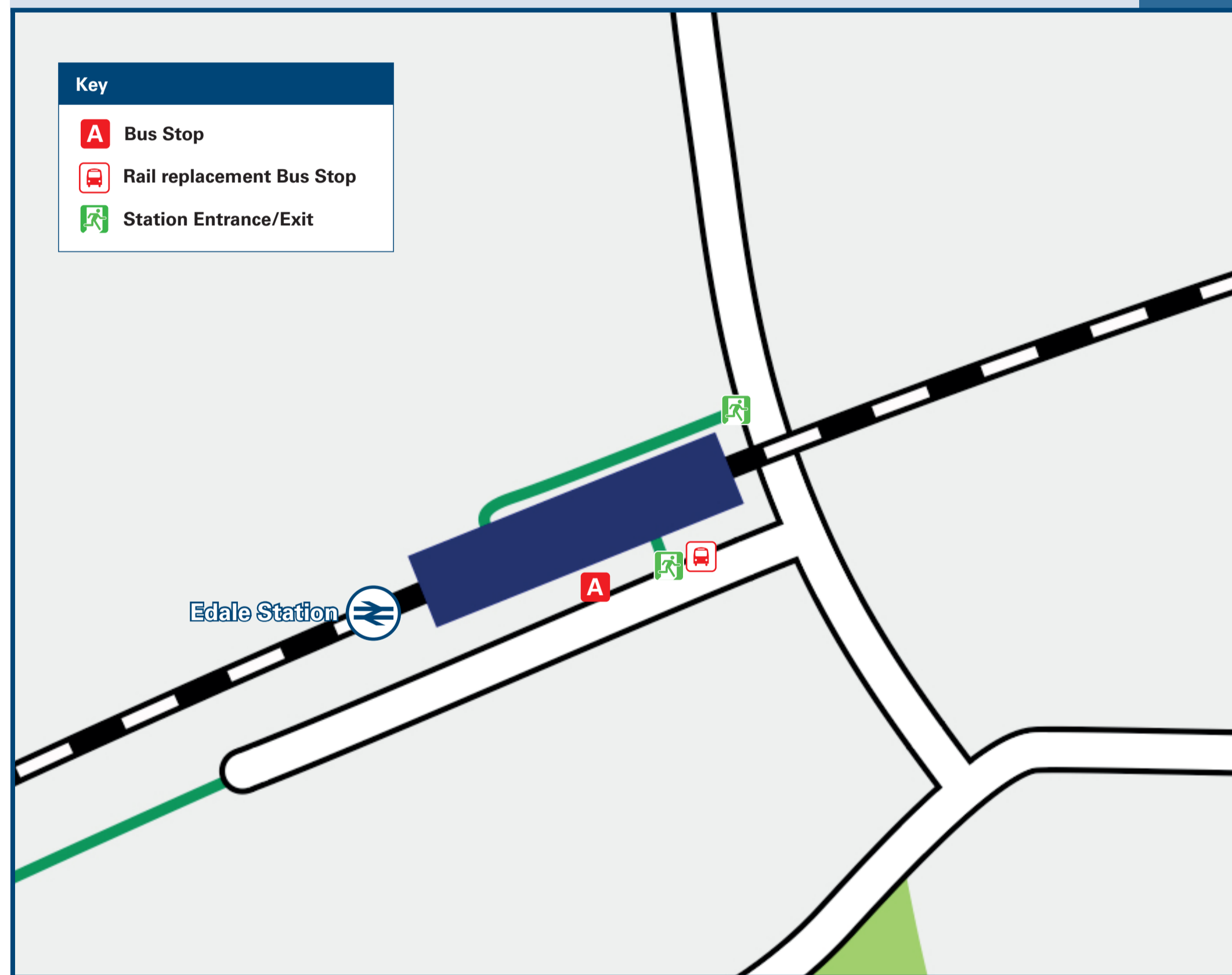
Edale Station

Onward Travel Information

Local area map



Station Map



Rail replacement transport pick up/drop off at the bus shelter at the station entrance. (Minibus only between Edale and Hope due to narrow roads).

Main destinations by bus

(Data correct at February 2026)

DESTINATION	BUS ROUTES	BUS STOP
Buxton (Market Place)	62	A
Castleton (Bus Station)	62	A
Chapel en le Frith	62	A
Dove Holes	62	A
Hope (Post Office)	62	A

Notes

- Bus route 62 operates a limited daytime service daily. No evening service.
- Direct trains operate to this destination from Crowle
- National Park Peak District National Park www.peakdistrict.gov.uk

Taxis

Edale station has no taxi rank or cab office. Advance booking is essential, please consider using the following local operators: (Inclusion of this number doesn't represent any endorsement of the taxi firm)

Nice Taxis
07977 402 060

TM Private Hire
01298 812 148

Penny's Cars
07917 710 771

Further information about all onward travel

Local Cycle Info www.derbyshire.gov.uk <small>For more information about cycle routes.</small>	National Cycle Info walkwheelcycletrust.org.uk	Bus Times <small>See timetable displays at bus stops.</small> www.traveline.info 0871 200 22 33 <small>calls cost 13p per minute plus your phone company's access charge</small>	PlusBus plusbus.info <small>PlusBus is a discount price 'bus pass' that you buy with your train ticket. It gives you unlimited bus travel around your chosen town, on participating buses. Visit www.plusbus.info</small>
--	--	--	--

National Rail Enquiries					
Online nationalrail.co.uk	NRE App Free National Rail Enquiries app for iOS and Android	Social Media facebook.com/nationalrailenq @nationalrailenq	Alert Me <small>You can sign up to Alert Me messages on the National Rail Enquiries website where you can receive train and platform notifications directly to your smart phone.</small> nationalrail.co.uk/alertme	Contact Centre 03457 48 49 50 <small>Calls cost no more than calls to geographic numbers (01 or 02) and may be recorded.</small>	PlusBike nationalrail.co.uk/plusbike <small>For more information.</small>



This poster shows details of popular destinations and main, frequent bus routes. Additional services may run, so please check with Traveline or see posters at local bus stops. Whilst considerable care has been taken to ensure the information contained on this poster is correct and accurate, National Rail cannot accept responsibility for any loss or inconvenience caused by any errors or omissions, or for loss, damage, injury or inconvenience relating to the cancellation, alteration, delay or diversion of a service. For any feedback, please e-mail comments@onwardtravelposters.com

Scan this code with your mobile for full station information.