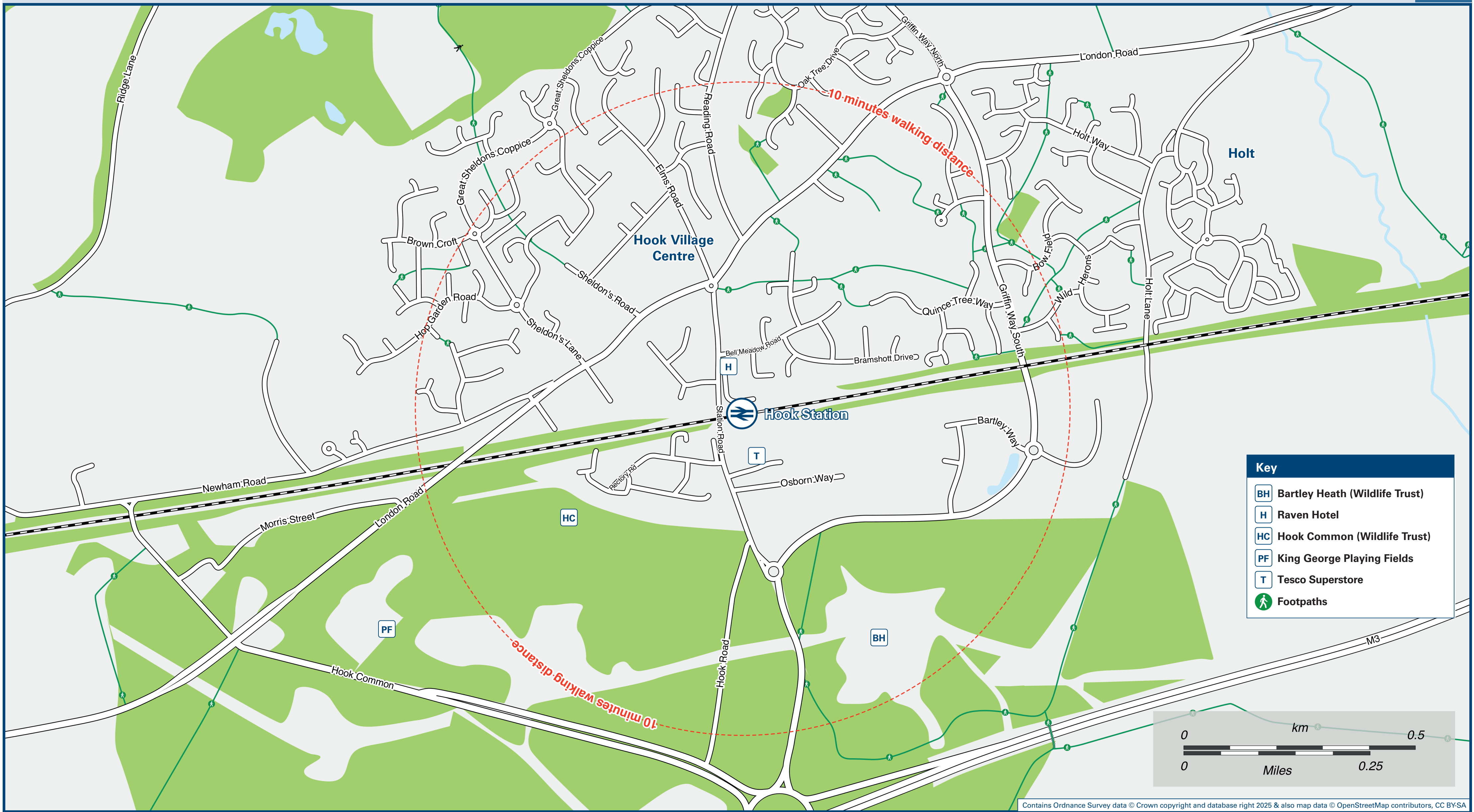




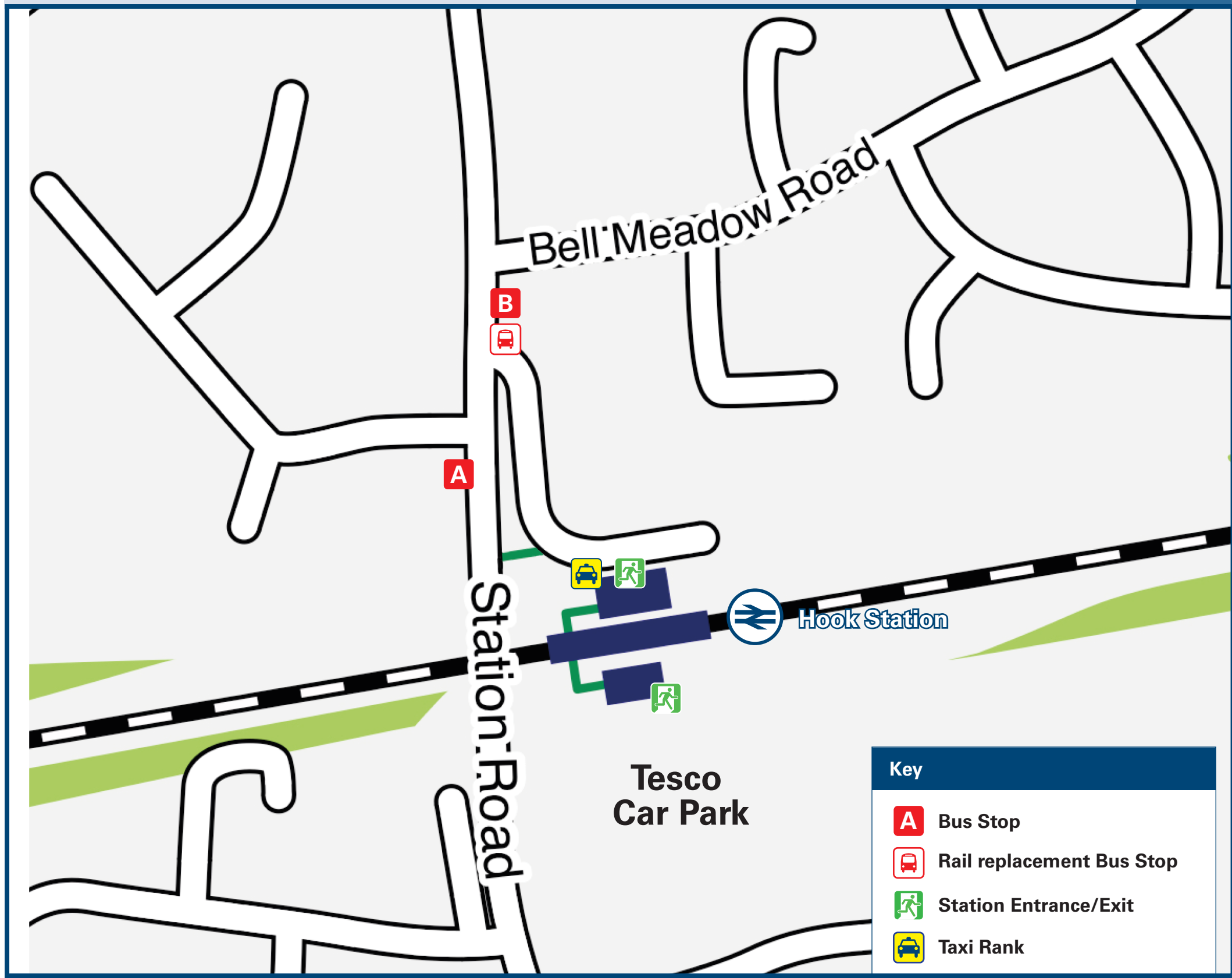
Hook Station

Onward Travel Information

Local area map



Buses and Taxis



Rail replacement buses depart from the bus stop on Station Road outside The Raven Hotel.

Main destinations by bus

DESTINATION	BUS ROUTES	BUS STOP
Alton (High Street)	13	B
Alton College	13	B
Basingstoke	13	A
Bordon	13	B
Hatch	13	A
Hook Common	13	A
Nately Scures	13	A
North Warnborough	13	B
Odiham	13	B
Old Basing	13	A
RAF Odiham	13	B
South Warnborough	13	B
Warnborough Green	13	B
Whitehill	13#	B

Notes

Bus route 13 operates Mondays to Saturdays.
For bus times and days of operation please contact Traveline on www.traveline.info or call: 0871 200 22 33

Direct trains operate to this destination from this station.
To this destination bus route 13 operates an evening service, only.

Taxis

Hook station is served by a taxi rank or cab office. Check availability before travelling, and pre-book if necessary. Please consider using the following local operators: (Inclusion of this number doesn't represent any endorsement of the taxi firm)

Station Taxi Hook
01256 767 676

Micks Cabs
07780 000 970

Star Taxis Hook
01256 520 518

Further information about all onward travel

Local Cycle Info	National Cycle Info	Bus Times	PlusBus
hart.gov.uk For more information about cycle routes.	walkwheelcycletrust.org.uk	See timetable displays at bus stops. www.traveline.info 0871 200 22 33 calls cost 12p per minute plus your phone company's access charge	 plusbus.info PlusBus is a discount price 'bus pass' that you buy with your train ticket. It gives you unlimited bus travel around your chosen town, on participating buses. Visit www.plusbus.info

National Rail Enquiries

Online	NRE App	Social Media	Alert Me	Contact Centre	PlusBike
nationalrail.co.uk	Free National Rail Enquiries app for iOS and Android	facebook.com/nationalrailenq @nationalrailenq	You can sign up to Alert Me messages on the National Rail Enquiries website where you can receive train and platform notifications directly to your smart phone. nationalrail.co.uk/alertme	03457 48 49 50 Calls cost no more than calls to geographic numbers (01 or 02) and may be recorded.	nationalrail.co.uk/plusbike For more information.

South Western Railway



National Rail
Britain's train companies working together



This poster shows details of popular destinations and main, frequent bus routes. Additional services may run, so please check with Traveline or see posters at local bus stops. Whilst considerable care has been taken to ensure the information contained on this poster is correct and accurate, National Rail cannot accept responsibility for any loss or inconvenience caused by any errors or omissions, or for loss, damage, injury or inconvenience relating to the cancellation, alteration, delay or diversion of a service. For any feedback, please e-mail comments@onwardtravelposters.com

Scan this code with your mobile for full station information.