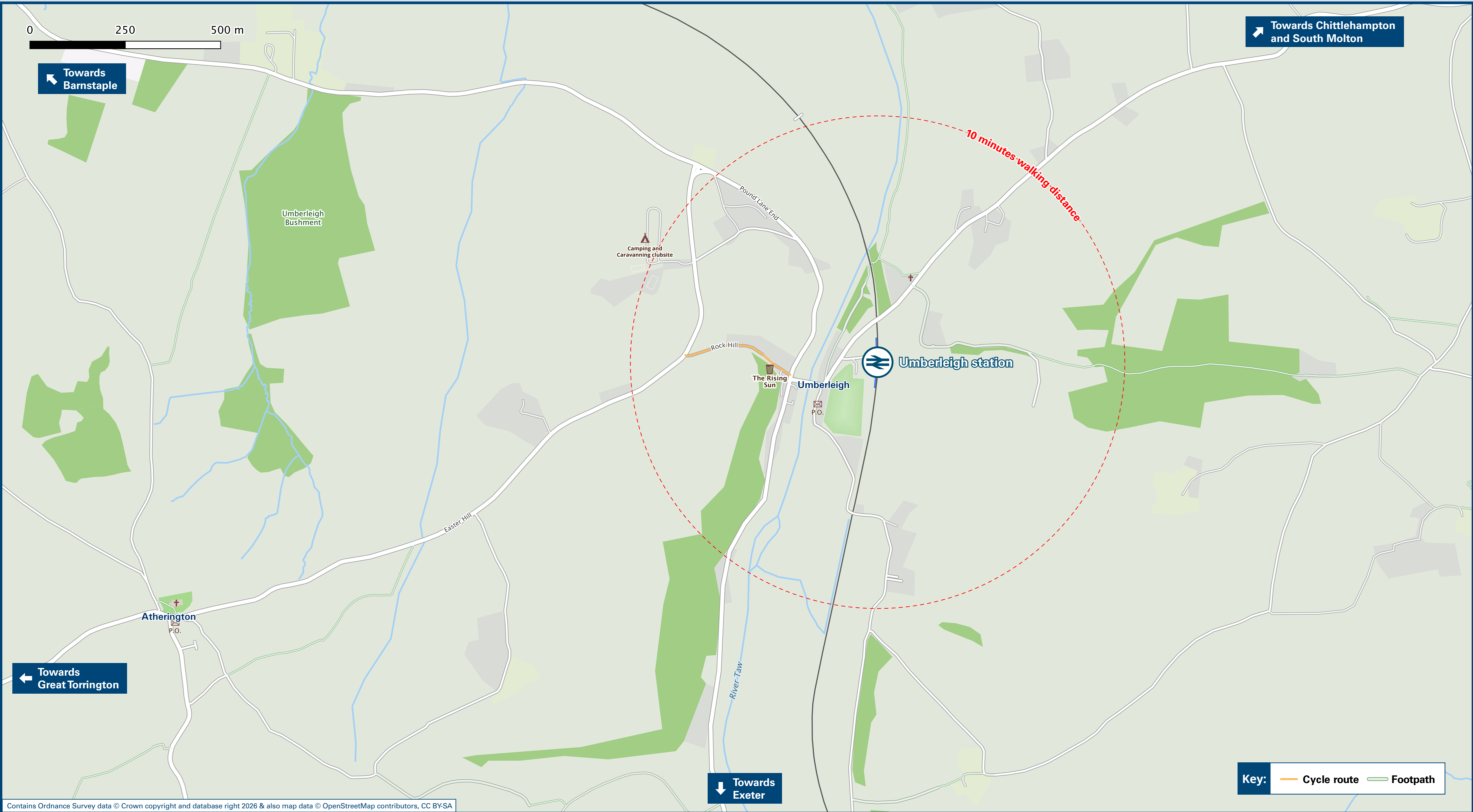




Umberleigh Station

Onward Travel Information

Local area map



Station Map



 Rail replacement buses/coaches will depart from the front of the Station.

Information

(Data correct at January 2026)

THERE ARE NO LOCAL BUS SERVICES SERVING UMBERLEIGH STATION

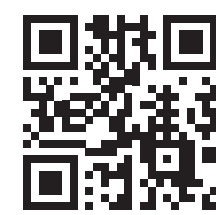
Local taxis are available as listed below: (Inclusion of this number doesn't represent any endorsement of the taxi firm)

South Molton
01769 573 636

Chumleigh & Witheridge Taxi
07922 131 473

Further information about all onward travel

Local Cycle Info	National Cycle Info	Bus Times	PlusBus
northdevon.gov.uk For more information about cycle routes.	walkwheelcycletrust.org.uk	See timetable displays at bus stops.  www.traveline.info 0871 200 22 33 <small>calls cost 15p per minute plus your phone company's access charge</small>	 plusbus.info plusbus.info PlusBus is a discount price 'bus pass' that you buy with your train ticket. It gives you unlimited bus travel around your chosen town, on participating buses. Visit www.plusbus.info



National Rail Enquiries

Online	NRE App	Social Media	Alert Me	Contact Centre	PlusBike
nationalrail.co.uk	Free National Rail Enquiries app for iOS and Android	 facebook.com/nationalrailenq  @nationalrailenq	You can sign up to Alert Me messages on the National Rail Enquiries website where you can receive train and platform notifications directly to your smart phone. nationalrail.co.uk/alertme	03457 48 49 50 <small>Calls cost no more than calls to geographic numbers (01 or 02) and may be recorded.</small>	 nationalrail.co.uk/plusbike <small>For more information.</small>



Whilst considerable care has been taken to ensure the information contained on this poster is correct and accurate, National Rail cannot accept responsibility for any loss or inconvenience caused by any errors or omissions, or for loss, damage, injury or inconvenience caused.

Scan this code with your mobile for full station information.