



# Liskeard Station

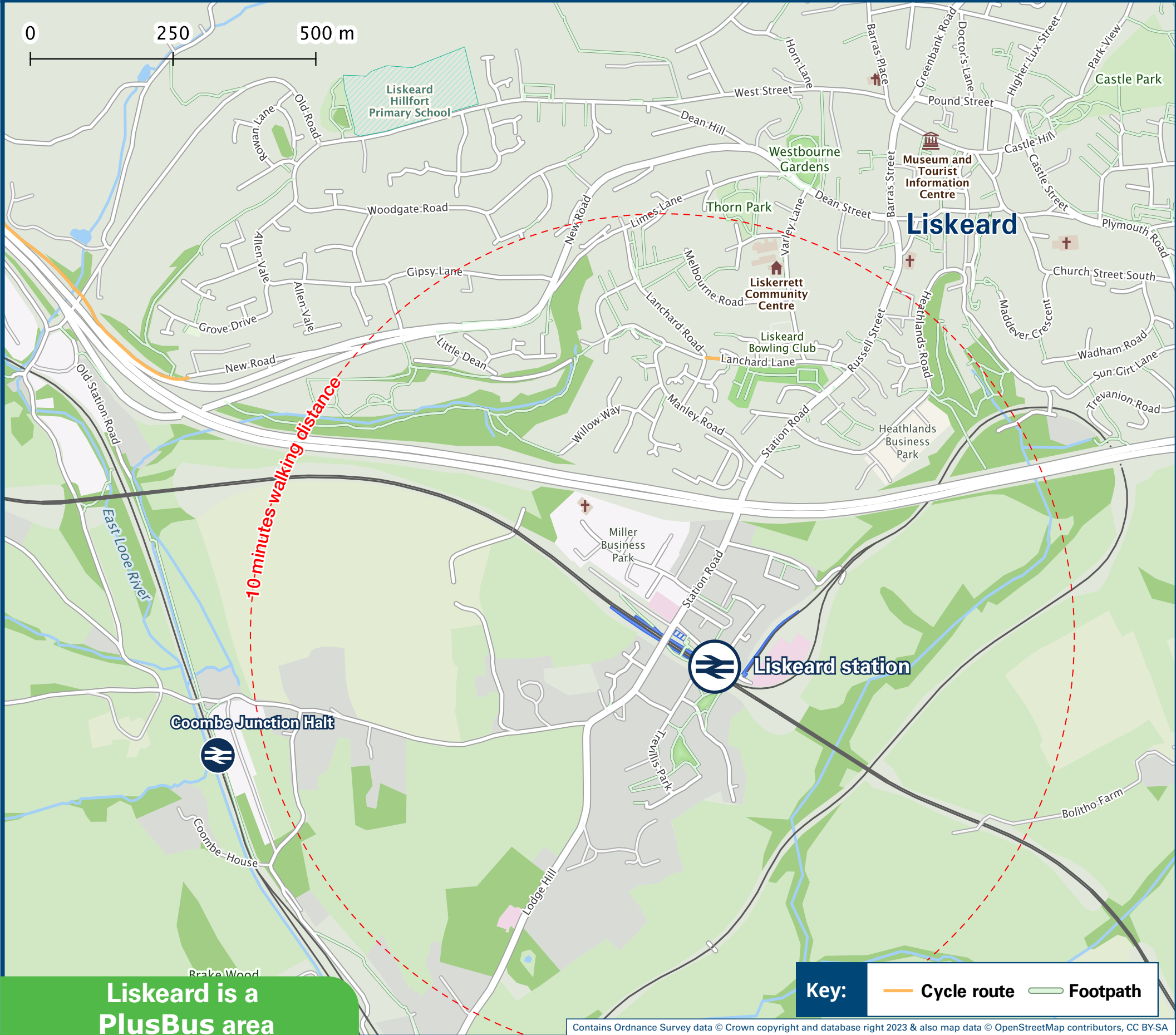
## Onward Travel Information

### Buses



Rail replacement buses/coaches will depart from the front of the station

### Local area map



**PlusBus** is a discount price 'bus pass' that you buy with your train ticket. It gives you unlimited bus travel around your chosen town, on participating buses. Visit [www.plusbus.info](http://www.plusbus.info)

### Main destinations by bus

(Data correct at November 2023)



DESTINATION	BUS ROUTES	BUS STOP
Antony	75	Town Centre
Bodmin	11	Town Centre
Bodmin Moor (for walking trails)	please see buses to Darite and Crows Nest, St Cleer or Upton Cross.	
Caradon Camping (for Trelawne Manor)	73, 73A	A
	77	Town Centre
Congdon's Shop	78#, 78A#	Town Centre
Crafthole	75	Town Centre
Darite and Crows Nest	74	Town Centre
Dobwalls	11, 77	Town Centre
Downderry	75	Town Centre
Duloe	73, 73A	A
Hessenford	75	Town Centre
Landrake	11	Town Centre
Launceston	78#, 78A#	Town Centre
Liskeard Town area -		
- Addington	11, 73, 74, 75, 78#, 78A#	Town Centre
- Allen Vale	11, 77	Town Centre
- Briarwood/Plymouth Road	74, 78#, 78A#	Town Centre
- Liskeard Community Hospital	74, 78#, 78A#	Town Centre

DESTINATION	BUS ROUTES	BUS STOP
- Town Centre (Barras Street, Post Office)	10 - 15 minutes walk from this station (see Local area map)	
	73, 73A	B
Looe/East Looe	73, 73A	A
Menheniot (Junction of the A39)	11	Town Centre
	73	A
Pelynt	77	Town Centre
Pensilva	74, 78#, 78A#	Town Centre
	73, 73A	A
Polperro	77	Town Centre
Sandplace	73, 73A	A
Seaview Holiday Park (Polperro)	73, 73A	A
	77	Town Centre
Seaton	75	Town Centre
South Petherwin	78#, 78A#	Town Centre
St Keyne	73, 73A	A
	73, 73A	A
Tencreek Holiday Park (Main Road Turn)	77	Town Centre
Tideford	11	Town Centre
Torpoint (for Ferry to Devonport)	75	Town Centre
Torpoint (HMS Raleigh)	75	Town Centre

DESTINATION	BUS ROUTES	BUS STOP
Trago Mills Retail Park	11, 77	Town Centre
Tremar/Lower Tremar	74	Town Centre
Tremarcoombe/Higher Tremarcoombe	74	Town Centre
Upton Cross	78#, 78A#	Town Centre
	73	A
West Looe	77	Town Centre
	73	A
West Waylands Holiday Park	77	Town Centre

#### Notes

- PlusBus destination, please see below for details.
- Bus route 77 operates a limited Mondays to Saturdays service between West Looe and Polperro.
- Bus route 75 operates a limited service Mondays to Saturdays, only.
- Bus routes 11 and 73 operate daily (on Sundays bus route 73 operates to Looe and Liskeard, only)
- For bus times please see bus stop timetables or contact Traveline.
- Plusbus tickets are valid within the Liskeard Plusbus zone on all listed bus routes.
- Direct trains operate from this Station to this destination.
- Direct trains operate to St Keyne Wishing Well station which is a 15 minute walk to St Keyne village.
- Alight here for the Bodmin & Wenford Railway.
- Bus routes 78 & 78A operate limited services Mondays to Fridays, only.



### Taxis

Liskeard station has no taxi rank or cab office. Advance booking is essential, please consider using the following local operators: (Inclusion of this number doesn't represent any endorsement of the taxi firm)

**St Cleer Taxis**  
01579 381 212

**Town Cabs**  
01579 344 678

**Liskeard Taxi**  
01579 647 657

### Further information about all onward travel

Local Cycle Info	National Cycle Info	Bus Times	NextBuses	PlusBus
<a href="http://cornwall.gov.uk">cornwall.gov.uk</a> For more information about cycle routes.	<a href="http://sustrans.org.uk">sustrans.org.uk</a> Sustrans is the UK's leading sustainable transport charity.	See timetable displays at bus stops.  <a href="http://www.traveline.info">www.traveline.info</a> 0871 200 22 33 calls cost 10p per minute plus your phone company's access charge	 Find the bus times for your stop. Search for a bus stop by entering a postcode, street & town or a stop name & town.	 <a href="http://plusbus.info">plusbus.info</a> A discount price 'bus pass' that you buy with your train ticket. It gives you unlimited bus travel around your chosen town, on participating buses.

### National Rail Enquiries

Online	NRE App	Social Media	Alert Me	Contact Centre	PlusBike
<a href="http://nationalrail.co.uk">nationalrail.co.uk</a>	Free National Rail Enquiries app for iOS and Android	<a href="https://facebook.com/nationalrailenq">facebook.com/nationalrailenq</a> @nationalrailenq	You can sign up to Alert Me messages on the National Rail Enquiries website where you can receive train and platform notifications directly to your smart phone. <a href="http://nationalrail.co.uk/alertme">nationalrail.co.uk/alertme</a>	<b>03457 48 49 50</b> Calls cost no more than calls to geographic numbers (01 or 02) and may be recorded.	<a href="http://nationalrail.co.uk/plusbike">nationalrail.co.uk/plusbike</a> For more information.



This poster shows details of popular destinations and main, frequent bus routes. Additional services may run, so please check with Traveline or see posters at local bus stops. Whilst considerable care has been taken to ensure the information contained on this poster is correct and accurate, National Rail cannot accept responsibility for any loss or inconvenience caused by any errors or omissions, or for loss, damage, injury or inconvenience relating to the cancellation, alteration, delay or diversion of a service. For any feedback, please e-mail [comments@onwardtravelposters.com](mailto:comments@onwardtravelposters.com)

Scan this code with your mobile for full station information.