



Blackpool South Station

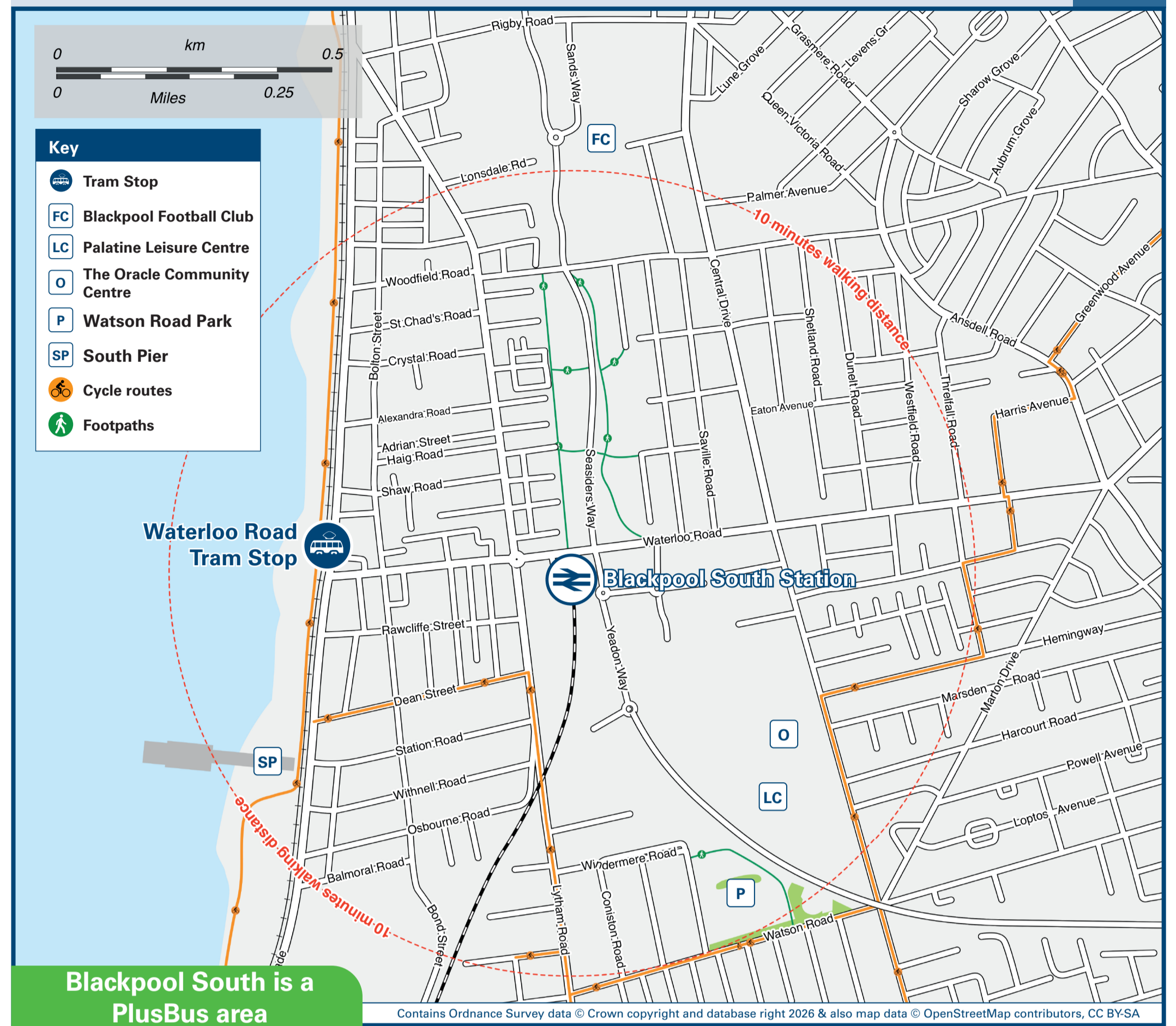
Onward Travel Information

Buses and Trams



Rail replacement buses Pick up / Drop off at the Station entrance on Waterloo Road (bridge above the station).

Local area map



Blackpool South is a PlusBus area

Add PlusBus to your train ticket—now available on eTicket from leading rail ticketing apps—for unlimited bus travel in the PlusBus zone in your destination town or city. Visit www.plusbus.info

Main destinations by bus and trams (Data correct at March 2026)

DESTINATION	BUS/TRAM ROUTES	BUS/TRAM STOP
● Anchorsholme	Tram (Northbound) #	Tram Stop N
● Ansdell (St Anne's) ●	11, 68	C
	7	F
● Blackpool Airport (Squires Gate) ●	11, 68	C
	7	F
	18	A
	10 minutes walk via Seaside Way (see Local area map)	
● Blackpool Football Club (Bloomfield Road)	5, 5A, 5B	B
	5, 5A, 5B, 7	E
	11, 68	D
● Blackpool Tower & Town Centre	Tram (Northbound) #	Tram Stop N
	5, 5A, 5B	B
	5, 5A, 5B, 7	E
	11, 68	D
● Blackpool Zoo	5B	B
● Bloomfield Road (Central Drive)	5, 5A, 5B, 7	B
● Bloomfield Road (Lytham Road)	11, 68	D
● Cleveleys	Tram (Northbound) #	Tram Stop N
● Devonshire Square	18	B
● Farmers Arms	5	A
	11, 68	C

DESTINATION	BUS/TRAM ROUTES	BUS/TRAM STOP
● Fishers Field	5, 5A, 5B, 18	A
	7	F
● Fleetwood	Tram (Northbound) #	Tram Stop N
● Halfway House	5, 5A, 5B	A
	7	F
● Layton Square	5, 5A, 5B	B
● Lytham ●	11, 68	C
	7	F
● Marton (Oxford Square)	18	B
● Marton Moss (Cherry Tree Road)	18	A
● Mereside (Clifton Park Retail Park)	18	A
● Norbreck	Tram (Northbound) #	Tram Stop N
● Palatine Campus & The Oracle.	Short walk via Central Drive - see local area map	
● Poulton-le-Fylde	5, 18	B
● Seafrost / Promenade (Waterloo Road Tram Stop)	10 minutes walk via Waterloo Road	
	15 minutes walk via Waterloo Road and Promenade	
● South Shore (Blackpool Pleasure Beach) ●	Tram (Southbound) #	Tram Stop S
	18(Alight Watson Road)	A
● Spen Corner	18	B

DESTINATION	BUS/TRAM ROUTES	BUS/TRAM STOP
● Squires Gate / Starr Gate ●	Tram (Southbound) #	Tram Stop S
	11, 68	C
	18	A
	7	F
● Staining	5A	B
● St Anne's-on-Sea ●	11, 68	C
	7	F
● Victoria Hospital	5, 5A, 5B	B
	18	A

Notes

- PlusBus destination, please see below for details.
- Bus routes 5, 5A, 7, 11, 18 & 68 and Blackpool Trams operate daily services.
- Bus route 5B operates a service on Mondays to Saturdays, only. No Sunday service.
- For bus times and days of operation please see bus stop timetables, or contact Traveline on www.traveline.info or call: 0871 200 22 33
- Direct trains operate to this destination from this station.
- # It's a 10 minutes walk from this station to Waterloo Road Tram Stop on the Promenade (Seafrost), see Local area map for directions.

Taxis

Blackpool South Station has no taxi rank or cab office. Advance booking is essential, please consider using the following local operators: (Inclusion of this number doesn't represent any endorsement of the taxi firm)

Premier Taxis
01253 401 000

C Cabs
01253 29 29 29

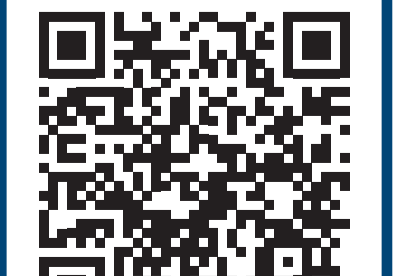
Blackpool 24/7 Taxis
01253 777 222

Further information about all onward travel

Local Cycle Info blackpool.gov.uk <small>For more information about cycle routes.</small>	National Cycle Info walkwheelcycletrust.org.uk	Bus Times <small>See timetable displays at bus stops.</small> www.traveline.info 0871 200 22 33 <small>call cost 12p per minute plus your phone company's access charge</small>	PlusBus plusbus.info PlusBus is a discount price 'bus pass' that you buy with your train ticket. It gives you unlimited bus travel around your chosen town, on participating buses. Visit www.plusbus.info
--	--	--	---

National Rail Enquiries

Online nationalrail.co.uk	NRE App Free National Rail Enquiries app for iOS and Android	Social Media facebook.com/nationalrailenq @nationalrailenq	Alert Me You can sign up to Alert Me messages on the National Rail Enquiries website where you can receive train and platform notifications directly to your smart phone. nationalrail.co.uk/alertme	Contact Centre 03457 48 49 50 Calls cost no more than calls to geographic numbers (01 or 02) and may be recorded.	PlusBike nationalrail.co.uk/plusbike For more information.
---	--	---	---	--	--



This poster shows details of popular destinations and main, frequent bus routes. Additional services may run, so please check with Traveline or see posters at local bus stops. Whilst considerable care has been taken to ensure the information contained on this poster is correct and accurate, National Rail cannot accept responsibility for any loss or inconvenience caused by any errors or omissions, or for loss, damage, injury or inconvenience relating to the cancellation, alteration, delay or diversion of a service. For any feedback, please e-mail comments@onwardtravelposters.com

Scan this code with your mobile for full station information.