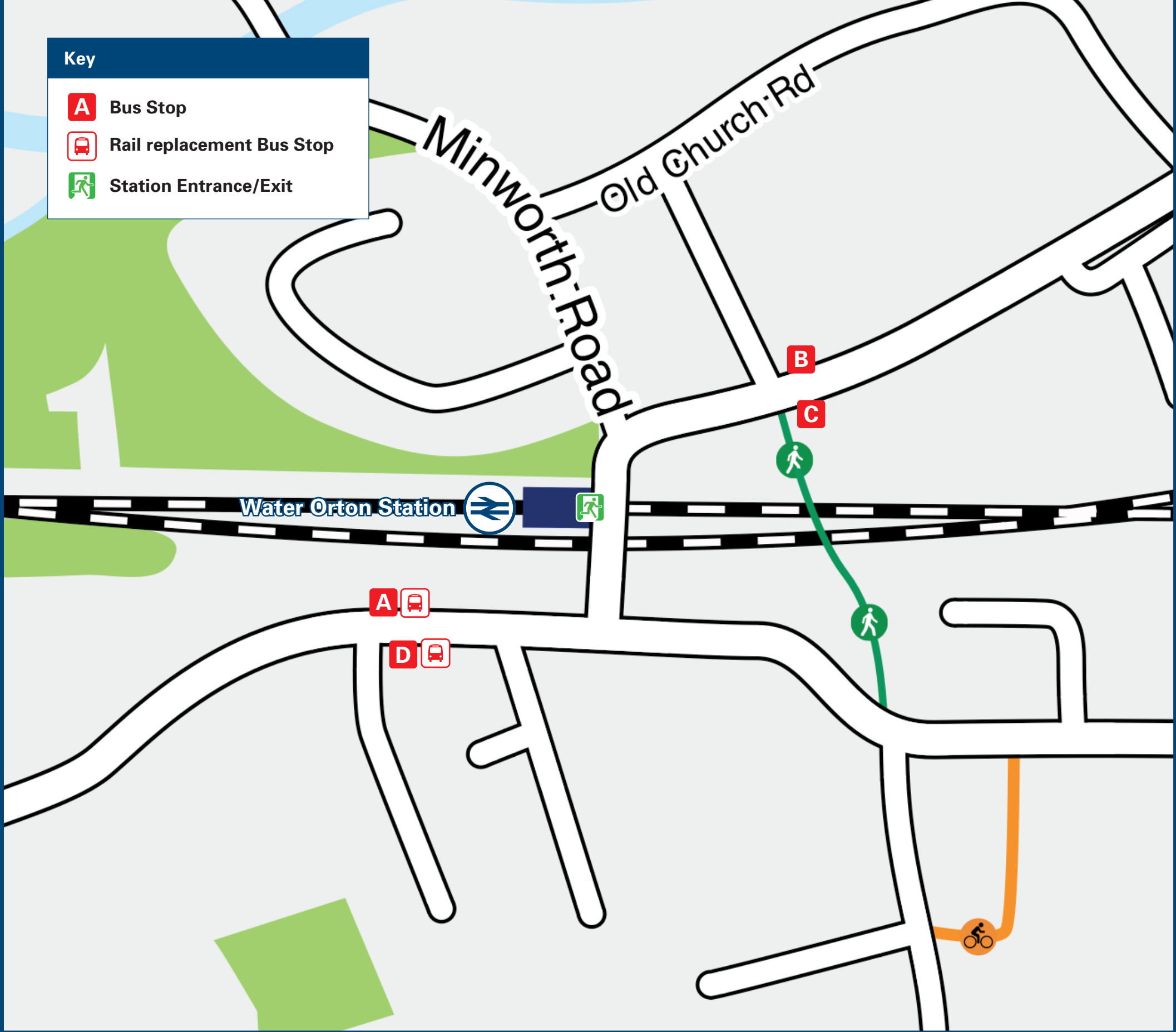




Water Orton Station

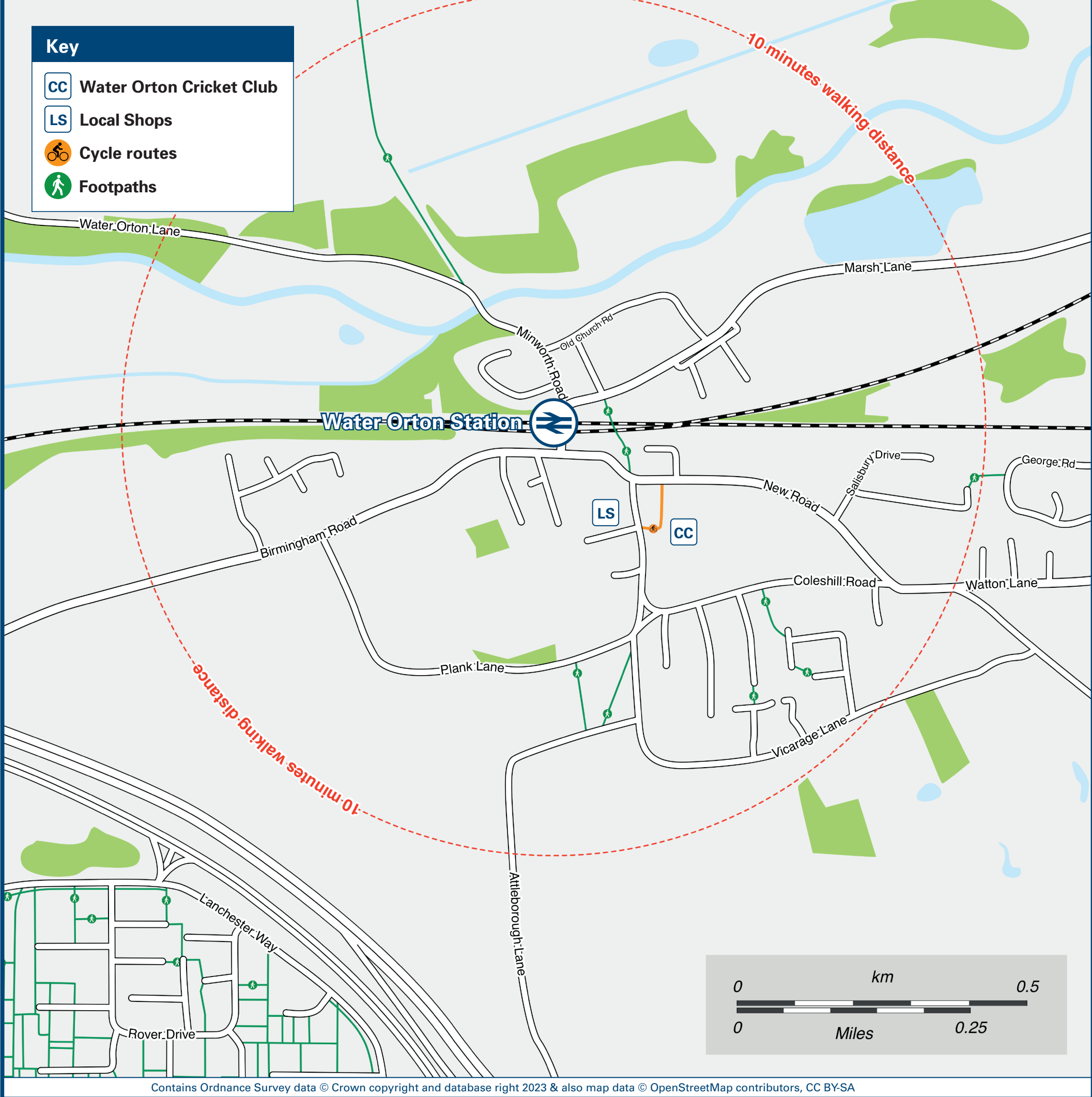
Onward Travel Information

Buses



Rail replacement buses/coaches will collect from public service bus stops {A} & {D} on the Birmingham Road.

Local area map



Main destinations by bus

(Data correct at August 2023)



DESTINATION	BUS ROUTES	BUS STOP
Alum Rock	X13	D
Aston University	X13	D
Birmingham (City Centre)	X13	D
Birmingham Business Park	X13	A
Bromford Bridge (Bromford Drive for The Fort Shopping Park)	X13	D
Buckland End	X13	D
Castle Bromwich (Hall Road for Castle Bromwich Hall Gardens)	X13	D
Chelmsley Wood	X13	A
Coleshill Parkway Station	X13	A
	76	C

DESTINATION	BUS ROUTES	BUS STOP
Coleshill (Town Centre / High Street)	X13	A
Curdworth	76	B
Dosthill	76	C
Fazeley	76	C
Good Hope Hospital (Sutton Coldfield)	76	B
Hams Hall	X13*	A
Hodgehill	X13	D
Kingsbury	76	C
Minworth	76	B
Nechells Green	X13	D
Reddicap Heath	76	B
Saltley	X13	D

DESTINATION	BUS ROUTES	BUS STOP
Sutton Coldfield	76	B
Tamworth	76	C
Ventura Park (Tamworth)	76	C
Walmley	76	B
Ward End	X13	D
Washwood Heath	X13	D
Whitehouse Common	76	B

Notes

Bus route 76 operates a limited service on Mondays to Saturdays only.
Bus route X13 operates daily.
For bus times and other bus service enquiries, please contact Traveline on 0871 200 22 33 or contact the bus operator (see below):
Diamond Bus (for bus route 76) call 0121 322 2222 or National Express West Midlands (for bus route X13) call 0121 254 7272.
* Limited journeys only to Hams Hall Industrial Estate, please check timetable.
 Direct trains operate to this destination from this station.

Taxis

Water Orton Station has no taxi rank or cab office. Advance booking is essential, please consider using the following local operators: (Inclusion of this number doesn't represent any endorsement of the taxi firm)

Local Radio Cars
0121 770 7707

Choice Cars
0121 747 2929

Parkfield Cars
01675 430 010

Further information about all onward travel

Local Cycle Info	National Cycle Info	Bus Times	NextBuses	PlusBus
networkwestmidlands.com/cycling For more information about cycle routes.	sustrans.org.uk Sustrans is the UK's leading sustainable transport charity.	See timetable displays at bus stops. www.traveline.info 0871 200 22 33 calls cost 15p per minute plus your phone company's access charge	Find the bus times for your stop. Search for a bus stop by entering a postcode, street & town or a stop name & town.	plusbus.info A discount price 'bus pass' that you buy with your train ticket. It gives you unlimited bus travel around your chosen town, on participating buses.

National Rail Enquiries

Online	NRE App	Social Media	Alert Me	Contact Centre	PlusBike
nationalrail.co.uk	Free National Rail Enquiries app for iOS and Android	facebook.com/nationalrailenq @nationalrailenq	You can sign up to Alert Me messages on the National Rail Enquiries website where you can receive train and platform notifications directly to your smart phone. nationalrail.co.uk/alertme	03457 48 49 50 Calls cost no more than calls to geographic numbers (01 or 02) and may be recorded.	nationalrail.co.uk/plusbike For more information.



National Rail
Britain's train companies working together



This poster shows details of popular destinations and main, frequent bus routes. Additional services may run, so please check with Traveline or see posters at local bus stops. Whilst considerable care has been taken to ensure the information contained on this poster is correct and accurate, National Rail cannot accept responsibility for any loss or inconvenience caused by any errors or omissions, or for loss, damage, injury or inconvenience relating to the cancellation, alteration, delay or diversion of a service. For any feedback, please e-mail comments@onwardtravelposters.com

Scan this code with your mobile for full station information.