



Liverpool Lime Street Station

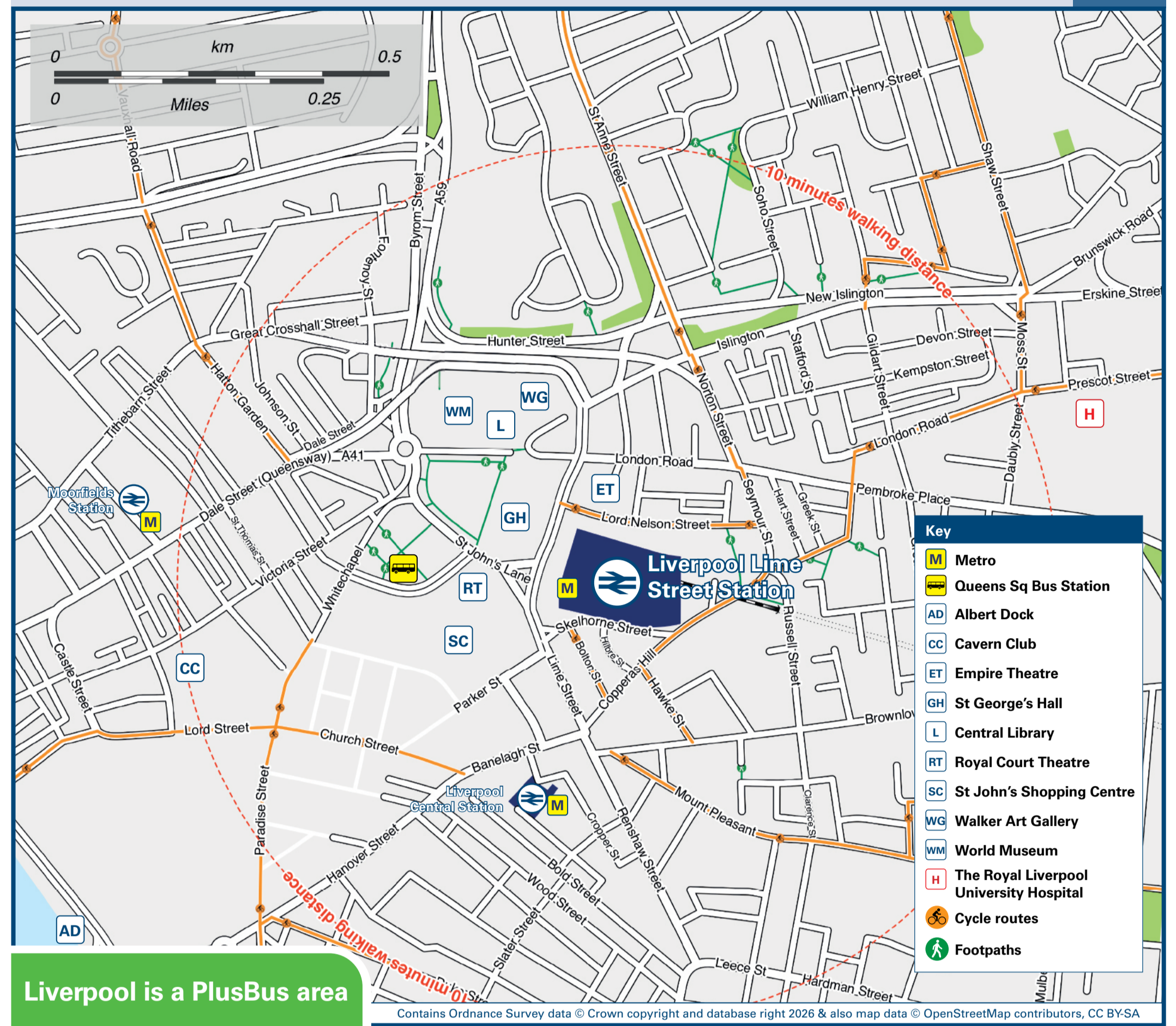
Onward Travel Information

Buses and Taxis



Rail replacement services depart at the Bus stop on Skelhorne Street, near the Tesco Express. L3 5GA.

Local area map



Liverpool is a PlusBus area



Add PlusBus to your train ticket—now available on eTicket from leading rail ticketing apps—for unlimited bus travel in the PlusBus zone in your destination town or city. Visit www.plusbus.info

Main destinations by bus

(Data correct at March 2026)

DESTINATION	BUS ROUTES	BUS STOP
Aintree Racecourse	300, 310, 345	Q S 1 0
Aintree University Hospital	17, 17A	Q S 6
Alder Hey Childrens Hospital	8, 9, 10, 10A, 10B, 15	Q S 1, Q S 2, Q S 4
Allerton	75, 86, 86A, 86C	Q S 8
Anfield	17, 17A, 19	Q S 6
Anfield (for Liverpool FC)	17	Q S 6
Bank Hall Station	47, 53, 300, X2	Q S 1 0, Q S 1 1
Belle Vale	79	Q S 8
Bootle	47, 53, 300, X2	Q S 1 0, Q S 1 1
Broadgreen Hospital	7	Q S 8
Cabbage Hall	14, 14A	Q S 5
Calderstones Park	75, 86, 86C	Q S 8
Clubmoor	14, 14A	Q S 5
Croxtheth Country Park	18	Q S 4
Deysbrook Lane	12	Q S 3
Dog & Gun	14, 14A	Q S 5
Dovecot (Pilch Lane)	8, 9, 15	Q S 1, Q S 2, Q S 4
Everton (Breck Road)	14, 14A, 19	Q S 5, Q S 6
Everton (for Everton FC)	19, 20, 21, 310, 345	Q S 1 0, Q S 1 1
Everton (Robson Street)	19	Q S 6
Fazakerley	17, 17A, 20, 21	Q S 6, Q S 7
Garston	82	Q S 8
Gilmoor	86, 86A	Q S 8
Grange Park	14, 14A, 19	Q S 5, Q S 6
Great Crosby	10	Q S 2
Halewood (for Shopping Centre)	47, 53, X2	Q S 1 0, Q S 1 1
Hope University	79	Q S 8
Hough Green	75, 86C	Q S 6, Q S 8
Huyton	79C	Q S 8
James Street Station	8, 9, 10B, 15, 61	Q S 1, Q S 4, Q S 8
Kensington	10A, 18	Q S 9
	7	Q S 8
	8, 9, 10, 10A, 10B, 12, 13, 15, 18, 61	Q S 1, Q S 2, Q S 3, Q S 4, Q S 8

DESTINATION	BUS ROUTES	BUS STOP
Kirkby (for Kirkby Bus Station)	14A, 17A, 19, 20, 21	Q S 5, Q S 6, Q S 7
Kirkby (Westvale)	20, 21	Q S 7
Kirkdale	20, 21, 47, 53, 300, 310, 345, X2	Q S 7, Q S 1 0, Q S 1 1
Knowsley	7	Q S 8
Linacre	8, 9, 10B, 14A	Q S 1, Q S 5
Liverpool John Lennon Airport	53, X2	Q S 1 1
Liverpool Women's Hospital (Crown Street)	500, 86A	Q S 8
Maghull	76, 86, 86A, 86C	Q S 8
Mossley Hill	300, 310	Q S 1 0
Muirhead Avenue	86, 86A, 86C, 699#	Q S 8
Netherley	76	Q S 8
Norris Green	18	Q S 4
Northwood	79	Q S 8
Old Roan Station	79C	Q S 8
Old Swan	14, 14A, 17, 17A	Q S 5, Q S 6
Page Moss	21	Q S 7
Penny Lane	300, 310, 345	Q S 1 0
Prescot	7	Q S 8
Royal Liverpool University Hospital	8, 9, 10, 10A, 10B, 12, 13, 14, 15, 17, 17A, 18, 19, 21, 61, 76, 78, 79C	Q S 1, Q S 2, Q S 3, Q S 4, Q S 5, Q S 6, Q S 8
Seaforth	86, 86A, 86C	Q S 8
Sefton Park	76	Q S 8
Southdene	10, 10A, 61	Q S 2, Q S 8
St Helen's	8, 9, 10, 10A, 10B, 12, 13, 14, 15, 17, 17A, 18, 19, 21, 61, 76, 78, 79C	Q S 1, Q S 2, Q S 3, Q S 4, Q S 5, Q S 6, Q S 8
Stockbridge Village	47, 53, X2	Q S 1 0, Q S 1 1
Tower Hill	75	Q S 8
Toxteth	86C	Q S 8
Tuebrook	76	Q S 8
Vauxhall	75, 82	Q S 8
	86, 86A, 86C, 699#	Q S 8
	500	Q S 8
	76	Q S 8
	12, 13, 15, 18	Q S 3, Q S 4
	47, 300, 310, X2	Q S 1 0, Q S 1 1

DESTINATION	BUS ROUTES	BUS STOP
Walton	17, 17A, 20, 21, 300, 310, 345	Q S 3, Q S 7, Q S 1 0
Walton Hall Park	19	Q S 6
Walton-on-the-Hill	20, 21, 310, 345	Q S 7, Q S 1 0
Walton Vale	20, 21, 300, 310, 345	Q S 7, Q S 1 0
Waterloo	47, 53, X2	Q S 1 0, Q S 1 1
Warbreck Park	300, 310, 345	Q S 1 0
Wavertree	79	Q S 8
	75, 80, 80A	Q S 8
	86, 86A, 86C, 699#	Q S 8
	61, 78, 79C	Q S 8
	7, 79	Q S 8
Wavertree Botanical Gardens	61, 79C	Q S 8
West Derby	12, 13, 15, 18	Q S 3, Q S 4
Whiston Hospital	10A, 61	Q S 2, Q S 8
Woolton	76, 78	Q S 8
	75	Q S 8

Notes

- PlusBus destination, please see below for details.
- Bus routes 8, 9, 86 and 86C operate Mondays to Saturdays, only.
- All other bus routes run daily (Mondays to Sundays) services.
- Plusbus services are valid on all Arriva North West, Huyton Travel, Peoples Bus, Stagecoach Cumbria and North Lancashire, and Stagecoach Merseyside and South Lancashire bus services.
- For bus times and days of operation please contact Traveline on www.traveline.info or call: 0871 200 22 33
- Direct trains operate to this destination from this station.
- Alternatively, take the Merseyrail underground service to Liverpool Central and change for a direct train service to this station.
- Change here for connecting domestic and international airline flights.
- Direct Liverpool Metro connection to this destination.
- Bus route 699 operates evenings Mondays to Fridays, and all day Saturday and Sunday.
- Bike Hire www.citybikeliverpool.co.uk (bike stands are located outside of the station front entrance)

Taxis Liverpool Lime Street station is a major station where taxis are usually available on a rank. Advance booking is not normally necessary, unless arriving early in the morning or late at night. Operators who may accept bookings include: (Inclusion of this number doesn't represent any endorsement of the taxi firm)

Comcab
0151 298 2222

Alpha Taxis
0151 722 8888

Mersey Cab
07873 681 051

Further information about all onward travel

Local Cycle Info merseytravel.gov.uk For more information about cycle routes.	National Cycle Info walkwheelcycletrust.org.uk	Bus Times See timetable displays at bus stops. www.traveline.info 0871 200 22 33 <small>calls cost 12p per minute plus your phone company's access charge</small>	PlusBus plusbus.info PlusBus is a discount price 'bus pass' that you buy with your train ticket. It gives you unlimited bus travel around your chosen town, on participating buses. Visit www.plusbus.info
---	--	--	---

National Rail Enquiries

Online nationalrail.co.uk	NRE App Free National Rail Enquiries app for iOS and Android	Social Media facebook.com/nationalrailenq @nationalrailenq	Alert Me You can sign up to Alert Me messages on the National Rail Enquiries website where you can receive train and platform notifications directly to your smart phone. nationalrail.co.uk/alertme	Contact Centre 03457 48 49 50 Calls cost no more than calls to geographic numbers (01 or 02) and may be recorded.	PlusBike nationalrail.co.uk/plusbike For more information.
---	--	---	---	--	--



This poster shows details of popular destinations and main, frequent bus routes. Additional services may run, so please check with Traveline or see posters at local bus stops. Whilst considerable care has been taken to ensure the information contained on this poster is correct and accurate, National Rail cannot accept responsibility for any loss or inconvenience caused by any errors or omissions, or for loss, damage, injury or inconvenience relating to the cancellation, alteration, delay or diversion of a service. For any feedback, please e-mail comments@onwardtravelposters.com