



Tilehurst Station

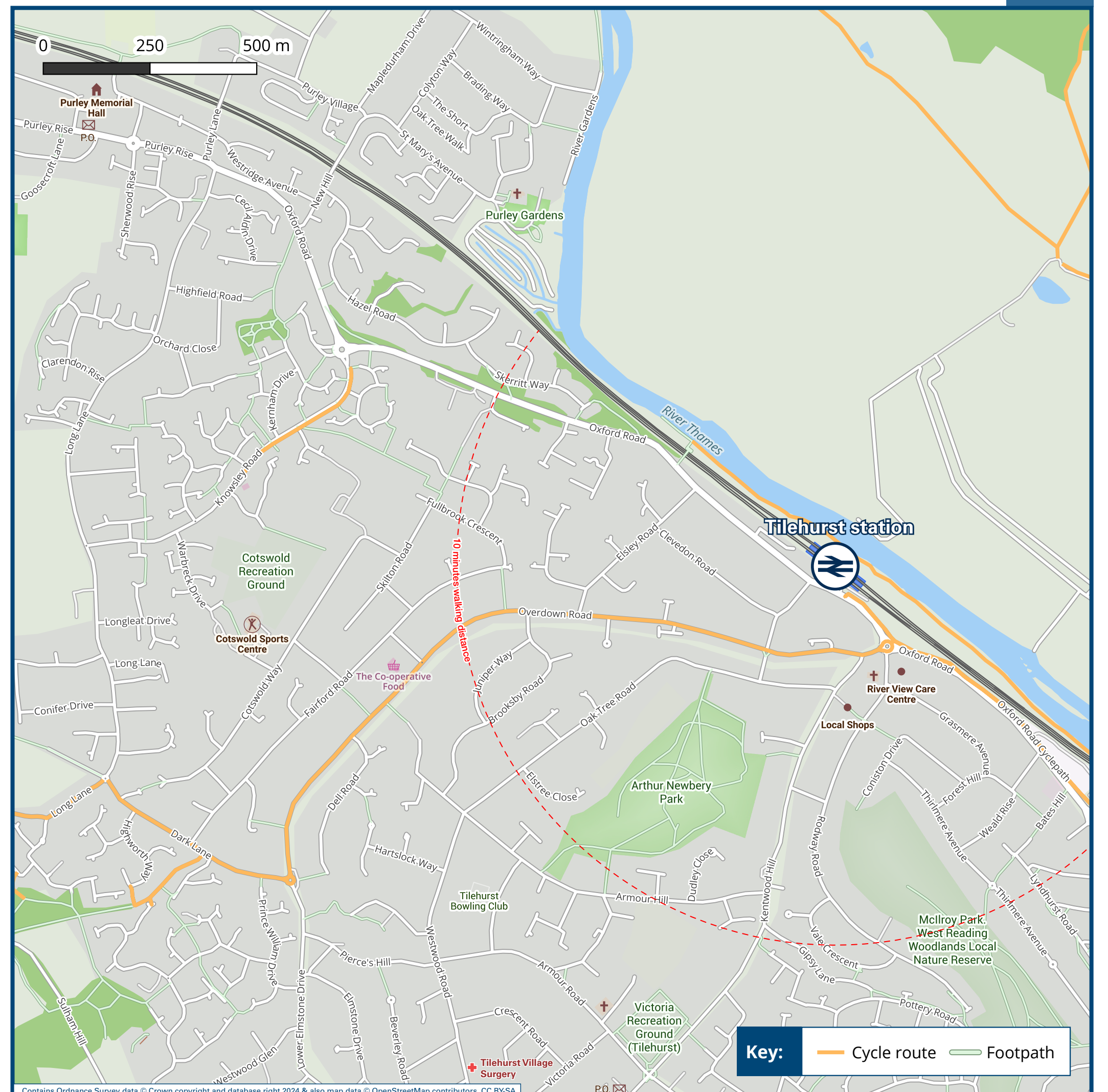
Onward Travel Information

Buses



Rail replacement buses/coaches starting or terminating at Tilehurst use the station forecourt. All other buses use the A329 Oxford Road bus stops near the station.

Local area map



Main destinations by bus

(Data correct at January 2025)



DESTINATION	BUS ROUTES	BUS STOP	DESTINATION	BUS ROUTES	BUS STOP	DESTINATION	BUS ROUTES	BUS STOP
Pangbourne ☺	43*	B	Reading West Station (Oxford Road)	43*	A	Upper Basildon	43*	B
Purley	43*	B	Rivermead Leisure Centre	16, 43*	C	Notes Bus routes 16 & 18 operate frequent daily services. For bus times and the latest bus service information, please contact Traveline on 0871 200 2233. ☺ Direct trains operate to this destination from this station. # Extensive bus connections to all parts of Reading and beyond at various bus stops adjacent to Reading station. + Not all journeys serve this destination, please check timetables. * Bus route 43 operates limited Mondays to Saturdays services. No Sunday services.		
Reading Station & Town Centre ☺ #	16	D, E	Tilehurst (Dark Lane)	18	C			
	43*	A	Tilehurst (Triangle)	16	D, E			
	16, 18, 43*	C		18	C			

Taxis

Tilehurst station has no taxi rank or cab office. Advance booking is essential, please consider using the following local operators: (Inclusion of this number doesn't represent any endorsement of the taxi firm)

Berkshire Cars
0118 950 0400

Regal Cars
0118 969 8080

Premier Cars
0118 950 0500

Further information about all onward travel

Local Cycle Info reading.gov.uk For more information about cycle routes.	National Cycle Info sustrans.org.uk Sustrans is the UK's leading sustainable transport charity.	Bus Times See timetable displays at bus stops. www.traveline.info 0871 200 22 33 calls cost 12p per minute plus your phone company's access charge	NextBuses .mobi Find the bus times for your stop. Search for a bus stop by entering a postcode, street & town or a stop name & town.	PlusBus plusbus.info A discount price "bus pass" that you buy with your train ticket. It gives you unlimited bus travel around your chosen town, on participating buses.
---	--	---	---	---

National Rail Enquiries

Online nationalrail.co.uk	NRE App Free National Rail Enquiries app for iOS and Android	Social Media facebook.com/nationalrailenq @nationalrailenq	Alert Me You can sign up to Alert Me messages on the National Rail Enquiries website where you can receive train and platform notifications directly to your smart phone. nationalrail.co.uk/alertme	Contact Centre 03457 48 49 50 Calls cost no more than calls to geographic numbers (01 or 02) and may be recorded.	PlusBike nationalrail.co.uk/plusbike For more information.
-------------------------------------	--	---	---	--	---



This poster shows details of popular destinations and main, frequent bus routes. Additional services may run, so please check with Traveline or see posters at local bus stops. Whilst considerable care has been taken to ensure the information contained on this poster is correct and accurate, National Rail cannot accept responsibility for any loss or inconvenience caused by any errors or omissions, or for loss, damage, injury or inconvenience relating to the cancellation, alteration, delay or diversion of a service. For any feedback, please e-mail comments@onwardtravelposters.com

Scan this code with your mobile for full station information.