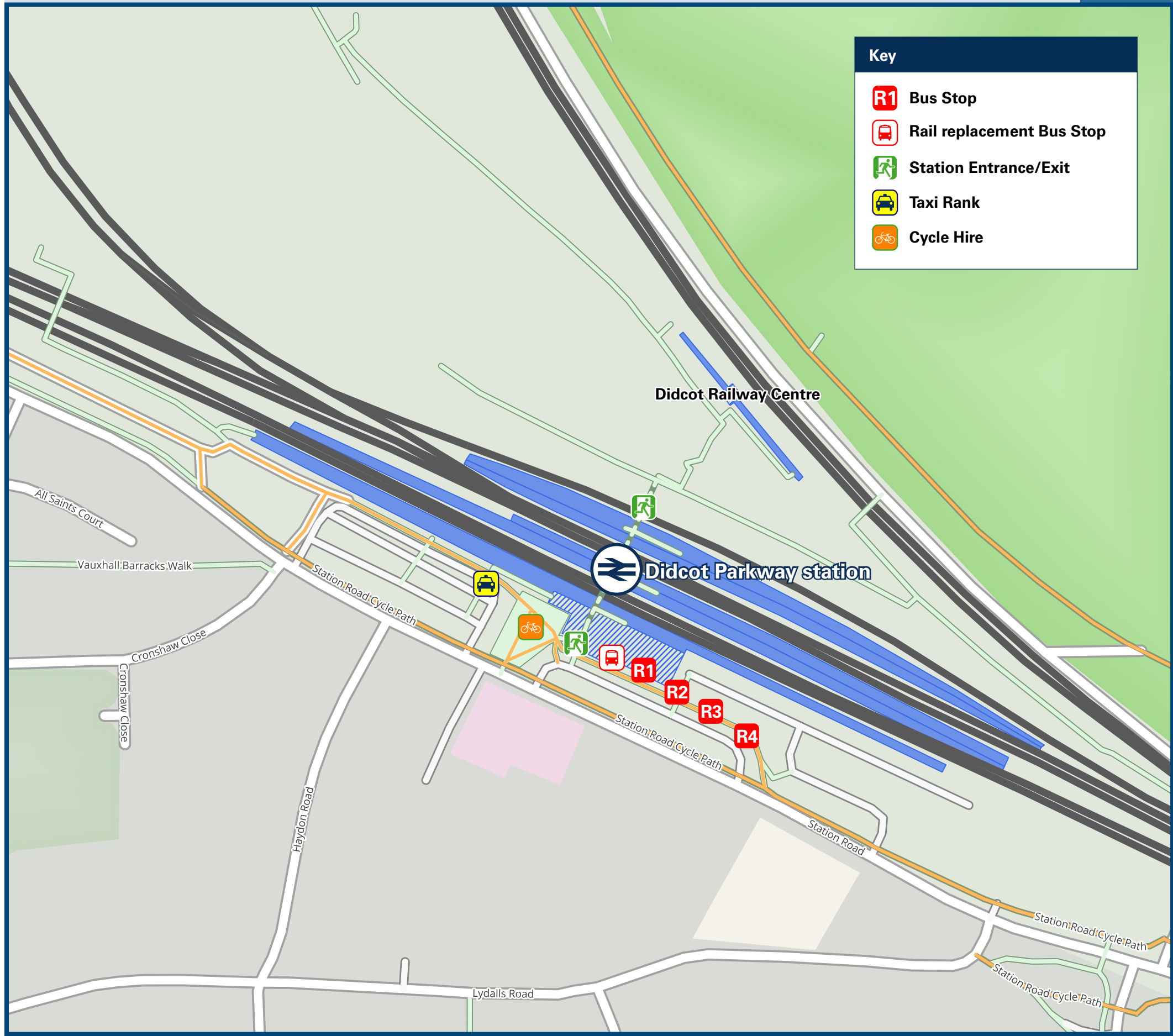




Didcot Parkway Station

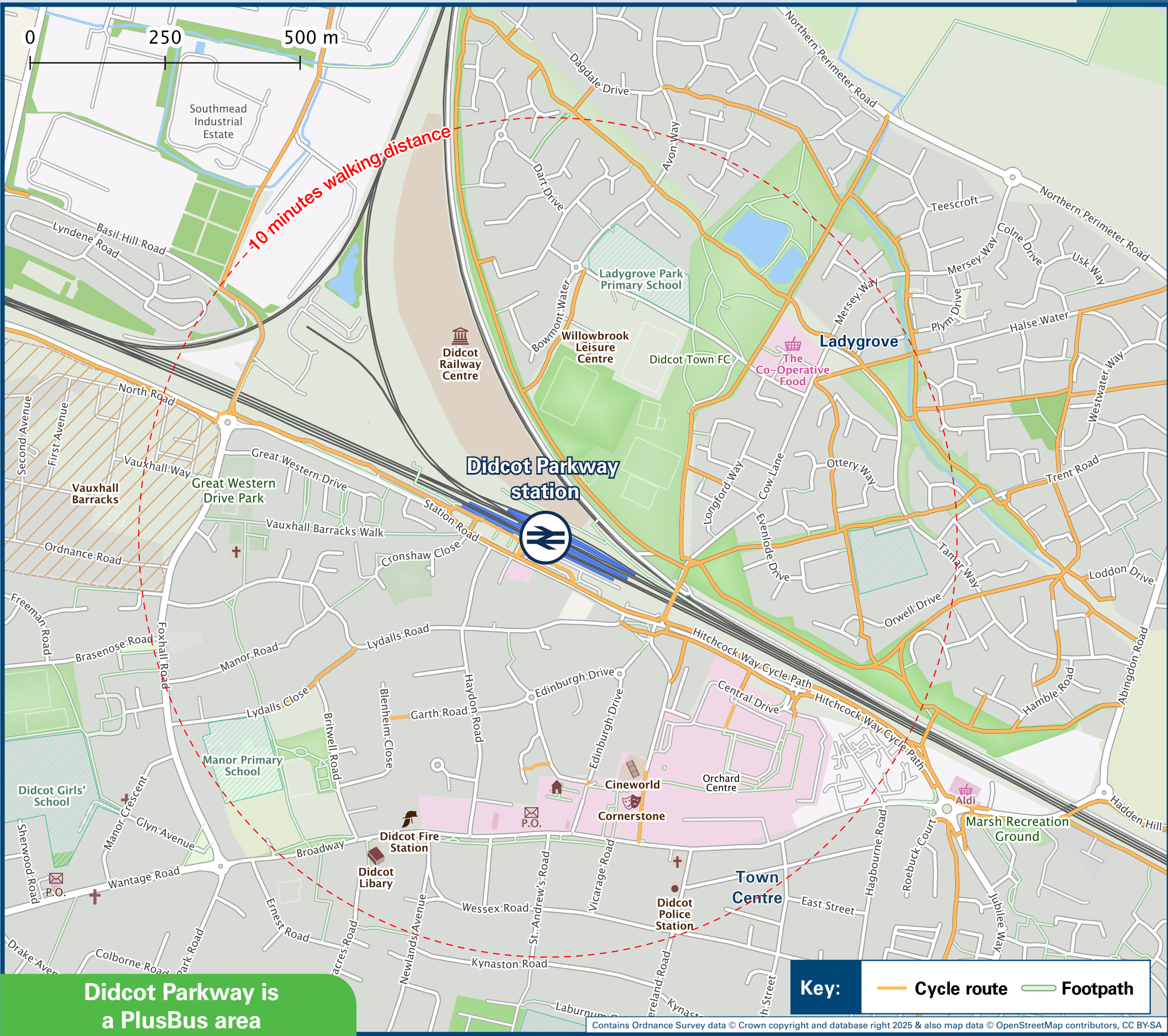
Onward Travel Information

Buses, Taxis and Cycle Hire



Rail replacement buses/coaches depart from the front of the station, or as directed by signs.

Local area map



Add **PlusBus** to your train ticket—now available on eTicket from leading rail ticketing apps—for unlimited bus travel in the **PlusBus** zone in your destination town or city. Visit www.plusbus.info

Main destinations by bus

(Data correct at January 2026)



DESTINATION	BUS ROUTES	BUS STOP
Abingdon	33, X2	R 1
Ardington Turn (A417)	X35	R 2
Blewbury	94~, 94A~	R 4
Brightwell-cum-Sotwell	33, 33A	R 3
Chilton	X34*	R 2
Cholsey Station (for Cholsey & Wallingford Railway)	Direct train to Cholsey (6 minute journey time)	
Clifton Hampden	95#	R 4
Crowmarsh Gifford	33	R 3
Culham Science Centre (adjacent to Culham station)	95#	R 4
Culham Village	33	R 1
Didcot (Broadway & Town Centre)	91#, 92#, 94~, 94A~, X34, X35, 33, 33A, X2, X32, X36	R 4 R 3
Didcot (Cockcroft)	X32	R 3
Didcot (Fleet Meadow / Sandringham Road)	92#, 94~, 94A	R 4
Didcot Hospital (Wantage Road)	92#	R 4
	X32	R 3
Drayton	X2	R 1
East Hagbourne	94~, 94A~	R 4
East Hanney	X36	R 1
East Hendred	X35	R 2

DESTINATION	BUS ROUTES	BUS STOP
Great Western Park (North / Central / UTC Oxfordshire)	33A (via Milton Park) X34, X35	R 1 R 2
Great Western Park (South)	X32	R 3
Grove	X36	R 1
Harwell Campus (Bus Station)	X34*, X35*	R 2
Harwell Village (High Street)	X34*, X35	R 2
Henley-on-Thames	33	R 3
John Radcliffe Hospital (Oxford)	X32	R 1
Kingsgrove (Wantage)	X35(alight Reading Road) X36	R 2 R 1
Ladygrove	91#, 95#	R 4
Long Wittenham	95#	R 4
Milton Park	33, 33A, X2, X32, X36	R 1
Milton Village	33	R 1
North Moreton	94A~	R 4
Nettlebed	33	R 3
Newbury	X34*	R 2
Nuffield	33	R 3
Oxford (via Abingdon)	X2	R 1
Oxford (direct via A34)	X32	R 1
South Moreton	94A~	R 4

DESTINATION	BUS ROUTES	BUS STOP
Steventon	X2, X36	R 1
Sutton Courtenay	33	R 1
Upton	94~, 94A~	R 4
Wallingford (Market Place)	33, 33A	R 3
Wantage (Market Place)	X35 X36	R 2 R 1
West Hagbourne	94~, 94A~	R 4
West Hendred	X35	R 2

Notes

- PlusBus** destination, please see below for details. Bus routes 33, X2, X32, X34 and X35 operate daily. Bus routes 33A & X36 operate Mondays to Saturdays. Additional local buses depart from Didcot Broadway, for bus times and days of operation please contact Traveline on www.traveline.info or call: 0871 200 22 33
- Direct trains operate from this station to this destination.
- For connecting train services to Henley-on-Thames, please change trains at Twyford.
- For connecting train services to Newbury, please change trains at Reading.
- Cholsey & Wallingford Railway, for more information please ring 01491 835 067 or visit www.cholsey-wallingford-railway.com/contact-us
- It's a 10 minutes walk from Didcot Parkway station to Didcot town centre and Broadway, see maps for directions.
- * Bus routes X34 or X35 operate to this destination Mondays to Saturdays only.
- # Bus routes 91, 92 and 95 operate limited Mondays to Fridays services, only.
- ~ Bus routes 94 & 94A operate limited daytime services on Mondays to Saturdays, only. No evenings or Sundays services.
- Bike Hire bromptonhire.com 0204 538 3225 (text 3125 to reserve bike)

Taxis

Didcot Parkway station is served by a taxi rank or cab office. Check availability, and pre-book if necessary. Please consider using the following local operators: (Inclusion of this number doesn't represent any endorsement of the taxi firm)

Go Green Taxis
01235 811 100

001 Taxis Didcot
01235 812 812

Didcot Taxis
01235 380 000

Further information about all onward travel

Local Cycle Info	National Cycle Info	Bus Times	PlusBus
oxfordshire.gov.uk For more information about cycle routes.	walkwheelcycletrust.org.uk	See timetable displays at bus stops. www.traveline.info 0871 200 22 33 calls cost 15p per minute plus your phone company's access charge	plusbus.info PlusBus is a discount price 'bus pass' that you buy with your train ticket. It gives you unlimited bus travel around your chosen town, on participating buses. Visit www.plusbus.info

National Rail Enquiries

Online	NRE App	Social Media	Alert Me	Contact Centre	PlusBike
nationalrail.co.uk	Free National Rail Enquiries app for iOS and Android	facebook.com/nationalrailenq @nationalrailenq	You can sign up to Alert Me messages on the National Rail Enquiries website where you can receive train and platform notifications directly to your smart phone. nationalrail.co.uk/alertme	03457 48 49 50 Calls cost no more than calls to geographic numbers (01 or 02) and may be recorded.	nationalrail.co.uk/plusbike For more information.



National Rail
Britain's train companies working together



This poster shows details of popular destinations and main, frequent bus routes. Additional services may run, so please check with Traveline or see posters at local bus stops. Whilst considerable care has been taken to ensure the information contained on this poster is correct and accurate, National Rail cannot accept responsibility for any loss or inconvenience caused by any errors or omissions, or for loss, damage, injury or inconvenience relating to the cancellation, alteration, delay or diversion of a service. For any feedback, please e-mail comments@onwardtravelposters.com

Scan this code with your mobile for full station information.