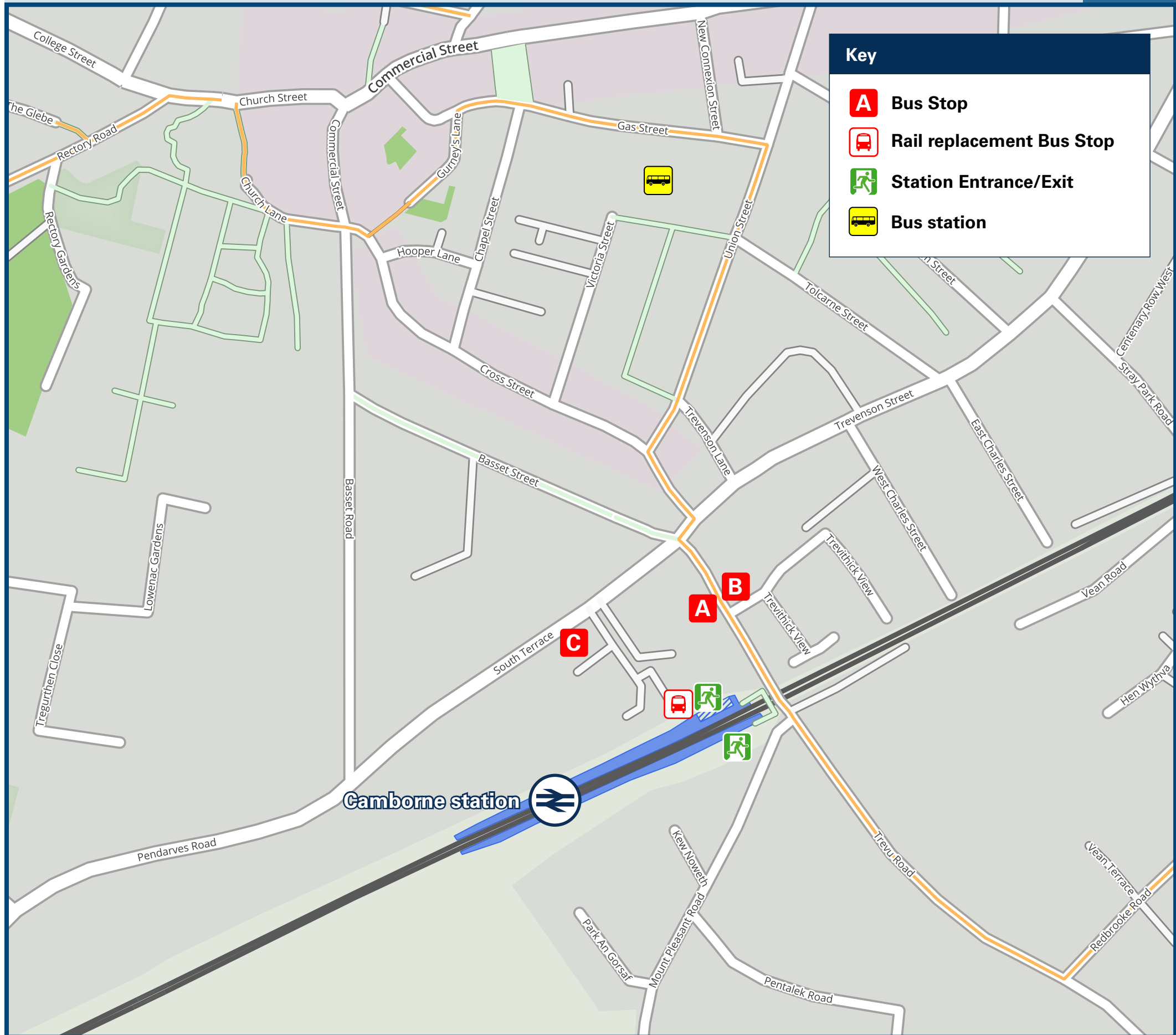




Camborne Station

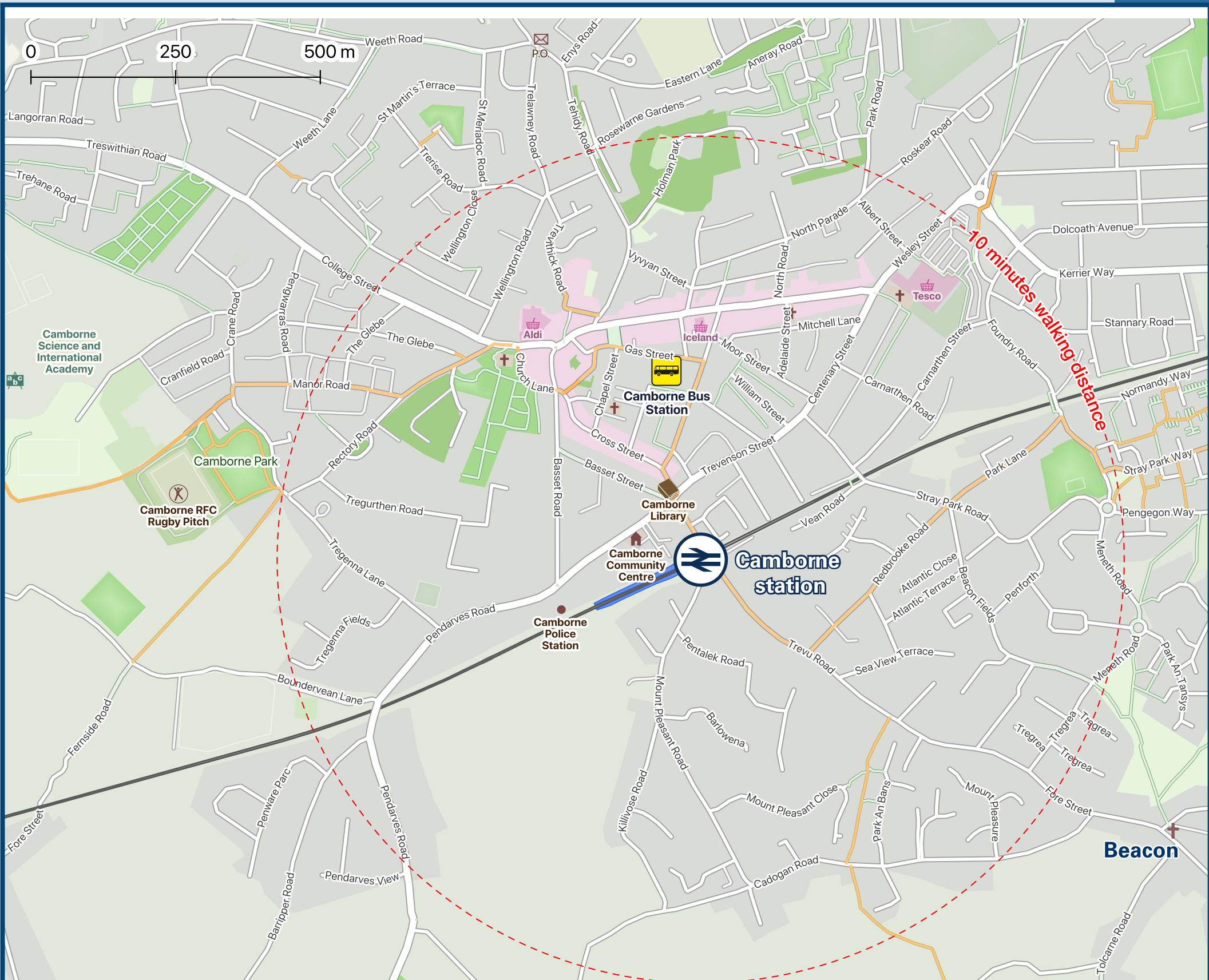
Onward Travel Information

Buses



Rail replacement buses/coaches will depart from the front of the Station.

Local area map



Camborne is a PlusBus area



Add **PlusBus** to your train ticket—now available on eTicket from leading rail ticketing apps—for unlimited bus travel in the **PlusBus** zone in your destination town or city. Visit www.plusbus.info

Main destinations by bus

(Data correct at January 2026)



DESTINATION	BUS ROUTES	BUS STOP
● Barripper	39, 39A	C
Brea	42*	Bus Station
● Bridge (near Portreath)	48~, 49	B
	14, 18, 33	Bus Station
● Camborne-Redruth Community Hospital (Barncoose Hospital)	49	B
	46	C
Carbis Bay	14	C
Carleen	39	C
● Carnhell Green	39, 39A	C
Carnkie	42*	Bus Station
Chacewater	14, 18	Bus Station
Connor Downs	14, 18	C
● Cornwall College (Camborne Campus)	14, 18, 33	Bus Station
Crowan	38	C
Crowlas	T1	C
Falmouth	33, 42*	Bus Station
Godolphin Cross	39	C
Hayle	14, 18	C
Helston	38, 39	C
	48~, 49	B
● Illogan	46	C
	46	C
● Illogan Highway	14, 18, 33	Bus Station

DESTINATION	BUS ROUTES	BUS STOP
Leedstown	39, 39A	C
Lelant	14	C
Loggans Moor	14, 18	C
Long Rock	18, 39A	C
● Mount Ambrose	14, 18	Bus Station
Nancegollan	38	C
● North Country (Trenoweth Estate)	48~, 49	B
	48~, 49	B
● Paynter's Lane End	46	C
	46	C
Penryn	33, 42*	Bus Station
Penzance	18, 39A	C
	48~, 49	B
● Pool	46	C
	14, 18, 33, 42*	Bus Station
● Portreath Beach	48~, 49	B
● Praze-an-Beeble	38	C
Reawla	39, 39A	C
	14, 18, 33	Bus Station
● Redruth	48~, 49	B
	48~, 49	B
St Ives	14	C
Scorrier	14, 18	Bus Station
Sithney	38, 39	C
Spamton Gate	48~, 49	A

DESTINATION	BUS ROUTES	BUS STOP
Threemilestone	14, 18	Bus Station
● Tolvaddon	48~, 49	B
Townshend	39, 39A	C
● Treswithian	14, 18, 41, 46	C
● Troon	48~, 49	B
● Truro	14, 18	Bus Station
● Tuckingmill	14, 18, 33, 42*	Bus Station
● Wall (For Parbola Holiday Park)	39, 39A	C

Notes

- **PlusBus** destination, please see below for details. To this destination bus route 38, 39, 39A, 41, 46 & 49 operate Mondays to Saturdays, only. No Sunday services. Bus routes 14, 18 & 33 operate daily services. For bus times and days of operation please contact Traveline on www.traveline.info or call: 0871 200 22 33
- ⚡ Direct trains operate from this Station to this destination.
- ⚡ Alternatively change trains at Truro for this destination.
- * Bus route 42 operates a limited daytime service on Mondays to Saturdays, only. No evenings or Sundays service.
- ~ To this destination, bus route 48 operates an evenings service Mondays to Saturdays, and a Sunday service, only.



Taxis

Camborne station has no taxi rank or cab office. Advance booking is essential, please consider using the following local operators: (Inclusion of this number doesn't represent any endorsement of the taxi firm)

Amber Cabs
01209 717 781

Camborne Taxis
01209 712 000

ABC Cabs of Camborne
01209 707 070

Further information about all onward travel

Local Cycle Info	National Cycle Info	Bus Times	PlusBus
cornwall.gov.uk For more information about cycle routes.	walkwheelcycletrust.org.uk	See timetable displays at bus stops. www.traveline.info 0871 200 22 33 calls cost 15p per minute plus your phone company's access charge	 plusbus.info PlusBus is a discount price 'bus pass' that you buy with your train ticket. It gives you unlimited bus travel around your chosen town, on participating buses. Visit www.plusbus.info

National Rail Enquiries

Online	NRE App	Social Media	Alert Me	Contact Centre	PlusBike
nationalrail.co.uk	Free National Rail Enquiries app for iOS and Android	facebook.com/nationalrailenq @nationalrailenq	You can sign up to Alert Me messages on the National Rail Enquiries website where you can receive train and platform notifications directly to your smart phone. nationalrail.co.uk/alertme	03457 48 49 50 Calls cost no more than calls to geographic numbers (01 or 02) and may be recorded.	nationalrail.co.uk/plusbike For more information.



National Rail
Britain's train companies working together



This poster shows details of popular destinations and main, frequent bus routes. Additional services may run, so please check with Traveline or see posters at local bus stops. Whilst considerable care has been taken to ensure the information contained on this poster is correct and accurate, National Rail cannot accept responsibility for any loss or inconvenience caused by any errors or omissions, or for loss, damage, injury or inconvenience relating to the cancellation, alteration, delay or diversion of a service. For any feedback, please e-mail comments@onwardtravelposters.com

Scan this code with your mobile for full station information.