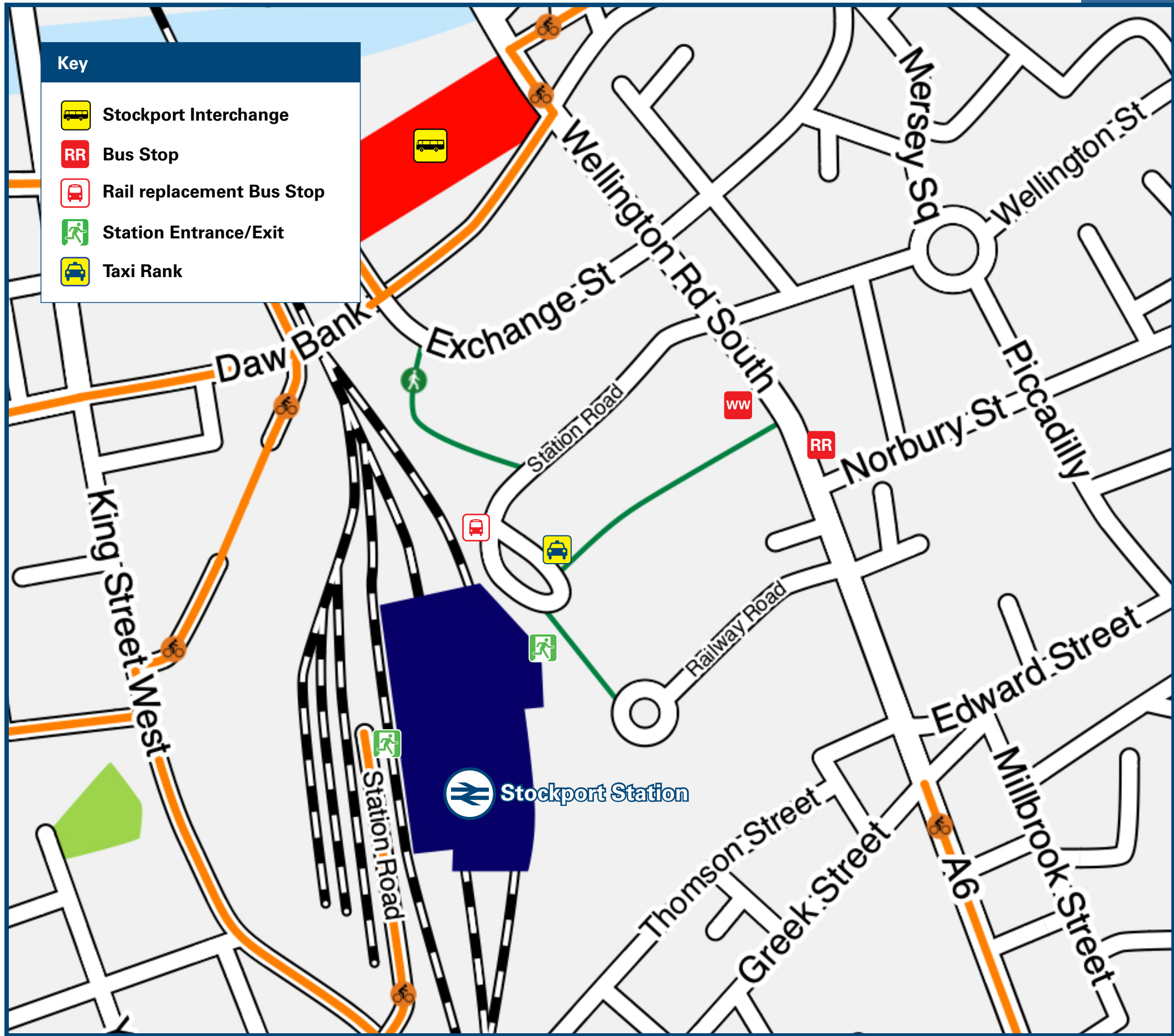




Stockport Station

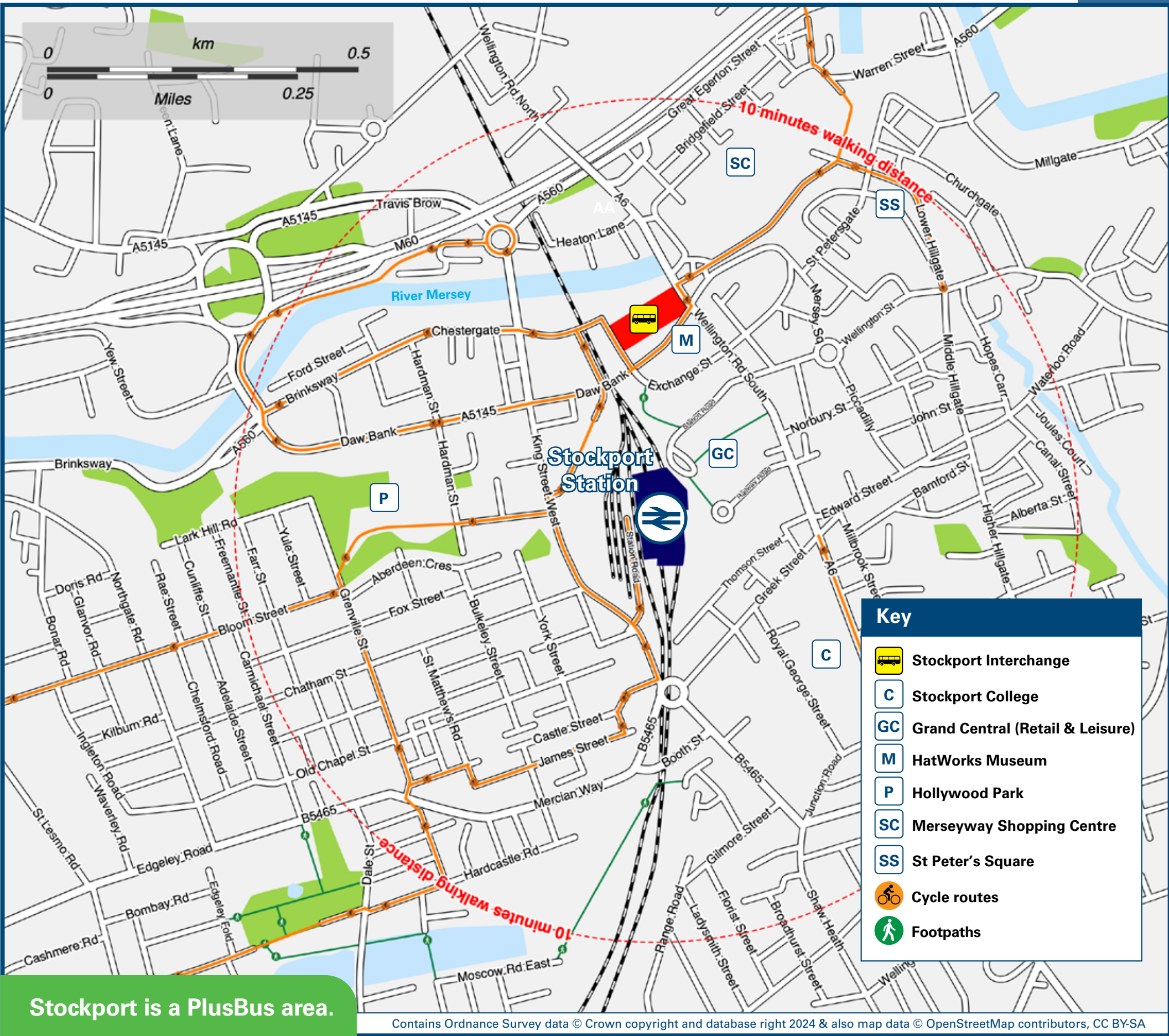
Onward Travel Information

Buses and Taxis



Rail replacement coach services can be found at the front of the station.

Local area map



Stockport is a PlusBus area.



PlusBus is a discount price 'bus pass' that you buy with your train ticket. It gives you unlimited bus travel around your chosen town, on participating buses. Visit www.plusbus.info

Main destinations by bus

(Data correct at October 2024)



DESTINATION	BUS ROUTES	BUS STOP
Adswood	313, 368, 374	Interchange RR
Ashton under Lyne	7 330	Interchange D # Interchange L #
Bosden Farm	375*, 385	Interchange RR
Bredbury	330	Interchange L #
Brinnington	382, 384 322, 327	Interchange K # Interchange N # Interchange M #
Burnage	325 25	Interchange D # Interchange C #
Cheadle	197 11, 370	Interchange C # Interchange A # Interchange R # Interchange P #
Cheadle Heath	371 310	Interchange R # Interchange R #
Cheadle Hulme	312	Interchange P #
Chorlton	11 23	Interchange RR Interchange B #
Compstall	25	Interchange D #
Dane Bank	383	Interchange RR
Denton	384	Interchange K #
Didsbury Village	7	Interchange D #
Drolydsen	327	Interchange N #
Dukinfield	23	Interchange B #
East Didsbury	42	Interchange A #
Edgeley (for Edgeley Park - Stockport FC)	42, 371 11, 368	Interchange RR Interchange R #
Fallowfield	309, 310	Interchange R #
Gatley	25 42	Interchange D # Interchange A #
Gee Cross	11	Interchange RR
Gorton	370 371	Interchange R # Interchange A #
	330	Interchange L #
	7	Interchange D #
	203	Interchange B #

DESTINATION	BUS ROUTES	BUS STOP
Green End	25 197	Interchange D # Interchange C #
Haughton Green	322, 327	Interchange D #
Hazel Grove	191, 192, 199, 375*, 391, 392, 393^	Interchange RR
Heald Green	368, 378, 379	Interchange RR
Heaton Chapel	7	Interchange D #
Heaton Mersey	191, 192	Interchange WW
Heaton Moor	23	Interchange B #
Heaton Norris (Didsbury Road)	42, 371	Interchange A #
Heaton Norris (Wellington Road North)	25	Interchange D #
Heaviley	191, 192	Interchange RR
High Lane	191, 192, 199, 375*, 385, 391, 392, 393^	Interchange RR
Hyde	199	Interchange RR
Levenshulme	330	Interchange L #
Longsight	191, 192	Interchange WW
Manchester Airport	191, 192	Interchange WW
Marple	313, 368+	Interchange RR
Marple Bridge	358, 375*, 383, 385	Interchange RR
Northenden	384	Interchange K #
Northern Moor	383, 385	Interchange RR
Offerton	370	Interchange A #
Offerton Estate	371	Interchange D #
Reddish	370	Interchange D #
Romiley	371	Interchange A #
	358, 375*, 383, 385	Interchange RR
	314	Interchange L #
	364	Interchange L #
	314	Interchange L #
	375*	Interchange RR
	7	Interchange D #
	203	Interchange B #
	383	Interchange RR

DESTINATION	BUS ROUTES	BUS STOP
Sharston	370	Interchange L #
Shaw Heath	371	Interchange A #
Stepping Hill (for Stepping Hill Hospital)	313, 374 191, 192, 199, 375*, 391, 392, 393^	Interchange RR Interchange RR
Stretford	23	Interchange D #
The Trafford Centre	25	Interchange D #
University of Manchester	42	Interchange A #
Urmston	191	Interchange WW
Withington	197	Interchange B #
Woodbank Park	23	Interchange B #
Woodley	364	Interchange L #
Wythenshawe (Interchange)	330	Interchange L #
Wythenshawe Hospital	382	Interchange K #
	11, 368	Interchange RR
	11, 368+	Interchange RR

Notes

- PlusBus** destination, please see below for details.
- For bus times and days of operation see bus stand timetables or ask at the information office at Stockport Interchange or contact Traveline on 0871 200 22 33 or Bee Network on 0161 244 1000 or visit www.tfgm.com/help-and-contact-us
- Direct trains operate to this destination from this Station.
- # This bus stand is located at Stockport Interchange which is a 7 minutes walk from Stockport railway station, see maps above for walking route.
- + Bus route 368 operates limited early morning and evening journeys Mondays to Saturdays only to Manchester Airport or Wythenshawe Hospital.
- * Bus route 375 operates evenings, Sundays and public holidays only.
- ^ Bus route 393 operates 1 early morning journey Mondays to Fridays only.

Taxis

Stockport is a major station where taxis are usually available on a rank. Advance booking is not normally necessary, unless arriving early in the morning or late at night. Operators who may accept bookings include: (Inclusion of this number doesn't represent any endorsement of the taxi firm)

Station Cabs
0161 480 9944

Metro Taxis
0161 480 8000

Go Cab
0330 053 3763

Further information about all onward travel

Local Cycle Info

stockport.gov.uk

For more information about cycle routes.

National Cycle Info

sustrans.org.uk

Sustrans is the UK's leading sustainable transport charity.

Bus Times

See timetable displays at bus stops.

www.traveline.info
0871 200 22 33
calls cost 15p per minute
plus your phone company's access charge

NextBuses

Find the bus times for your stop.
Search for a bus stop by entering a postcode, street & town or a stop name & town.

PlusBus

plusbus.info

A discount price 'bus pass' that you buy with your train ticket. It gives you unlimited bus travel around your chosen town, on participating buses.

National Rail Enquiries

Online

nationalrail.co.uk

NRE App

Free National Rail Enquiries app for iOS and Android

Social Media

facebook.com/nationalrailenq
@nationalrailenq

Alert Me

You can sign up to Alert Me messages on the National Rail Enquiries website where you can receive train and platform notifications directly to your smart phone.
nationalrail.co.uk/alertme

Contact Centre

03457 48 49 50
Calls cost no more than calls to geographic numbers (01 or 02) and may be recorded.

PlusBike

nationalrail.co.uk/plusbike
For more information.

AVANTI
WEST COAST



National Rail
Britain's train companies working together



This poster shows details of popular destinations and main, frequent bus routes. Additional services may run, so please check with Traveline or see posters at local bus stops. Whilst considerable care has been taken to ensure the information contained on this poster is correct and accurate, National Rail cannot accept responsibility for any loss or inconvenience caused by any errors or omissions, or for loss, damage, injury or inconvenience relating to the cancellation, alteration, delay or diversion of a service. For any feedback, please e-mail comments@onwardtravelposters.com

Scan this code with your mobile for full station information.