



Windsor & Eton Central Station

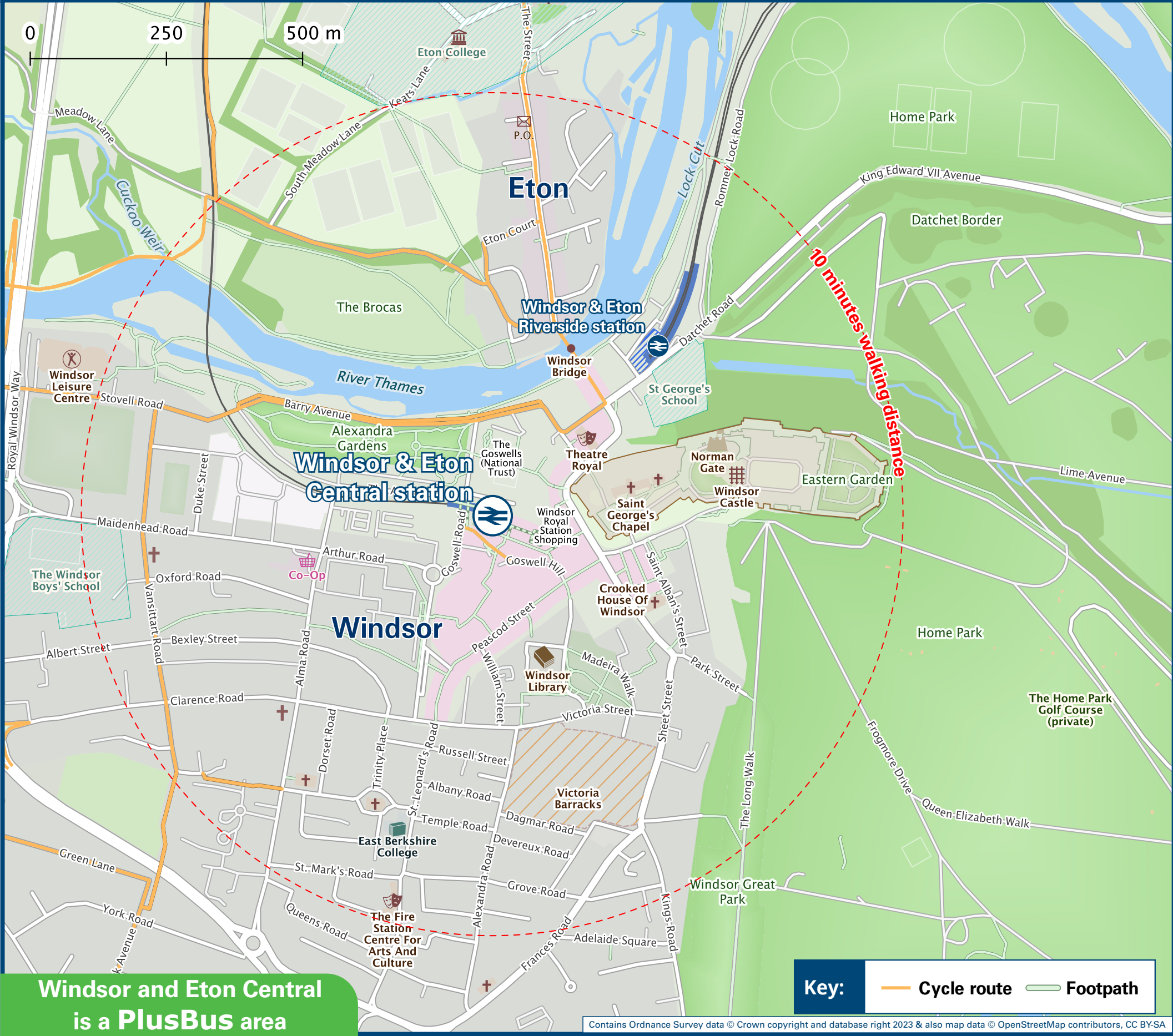
Onward Travel Information

Buses and Taxis



Rail replacement buses/coaches depart from outside the station on Datchet Road.

Local area map



PlusBus is a discount price 'bus pass' that you buy with your train ticket. It gives you unlimited bus travel around your chosen town, on participating buses. Visit www.plusbus.info

Main destinations by bus

(Data correct at November 2023)



DESTINATION	BUS ROUTES	BUS STOP
Ascot (Heatherwood Hospital)	702+, 703	G, J
Ascot (High Street for Ascot Racecourse)	01	B, V
BMI - The Princess Margaret Hospital	8, 702, 703 16, W1	G, J B, C
Bracknell	702+, 703	G, J
Bray Village	16	B, C
Bray Wick	16	B, C
Chalvey	2, 8, 702, 703 15	A, D K
Cheapside	01	B, V
Clewer	2, 702, 703 16, W1	G, J B, C
Cranbourne	703+	G, J
Datchet	P1	C
Dedworth	2 16, W1	G, J B, C
Dorney	15+	K
Egham	8	G, J
Egham Hythe	8	G, J
Englefield Green	8	G, J

DESTINATION	BUS ROUTES	BUS STOP
Eton College	15	K
Eton Wick	15	K
Fifield	16	B, C
Heathrow Airport Terminal 5	8(via Staines) 703(via Slough)	G, J A, D
Holport	16	B, C
Langley	702, 703	A, D
Legoland	702, 703	G, J
Maidenhead	16	B, C
North Ascot	702+, 703	G, J
Old Windsor	8	G, J
Runnymede (Magna Carta Centre)	8*	G, J
Royal Holloway College (Englefield Green)	8	G, J
Slough	2, 8, 702, 703 15	A, D K
South Ascot	01	B, V
Staines	8	G, J
Sunningdale	01	B, V
Upton	15	K
Windsor Great Park (The Village)	01	B, V

DESTINATION	BUS ROUTES	BUS STOP
Windsor (King Edward VII Hospital)	8, 702, 703 16, W1	G, J B, C
Windsor & Eton Circular Tour Bus	Tour Bus #	D

Notes

- PlusBus** destination, please see below for details.
- Bus routes 01, 2, 15 and 16A operate Mondays to Saturdays.
- Bus routes 8, 16, The London Line 702 and Flightline 703 operate daily.
- Bus routes P1 and W1 operate Mondays to Fridays only.
- For bus times and other bus service enquiries, please contact Traveline on 0871 200 22 33 or contact the bus operator (see below):
- First Berkshire & The Thames Valley (for bus route 8) call 0345 646 0707; Reading Buses (for bus routes 702 & 703) call 0118 959 4000; Thames Valley Buses (for bus routes 2, 16 & 700) call 0118 973 3486 or White Bus Services (for bus routes 01, P1 & W1) call 01344 882 612.
- Direct trains operate from this station to this destination.
- Direct trains operate from Windsor & Eton Riverside station to this destination.
- For connecting train services to Maidenhead, please change trains at Slough.
- * Alight bus route 8 at Old Windsor, The Bells of Ouzeley Public House, it's a 10 minutes walk to Runnymede Magna Carta Centre and Monument.
- + Not all journeys call at this destination with this service, please check timetables.
- # Windsor & Eton Circular Tour Bus (Tootbus) operates daily from April until mid October, then it's Saturdays and Sundays until March.

Taxis

Windsor & Eton Central station is served by a taxi rank on Thames Street adjacent to Windsor Castle. Check availability before travelling, and pre-book if necessary. Please consider using the following local operators: (Inclusion of this number doesn't represent any endorsement of the taxi firm)

Windsor Cab Rank
01753 862 020

Royal Windsor Taxis
01753 585 585

5 Star Cars
01753 858 888

Further information about all onward travel

Local Cycle Info	National Cycle Info	Bus Times	NextBuses	PlusBus
rbwm.gov.uk For more information about cycle routes.	sustrans.org.uk Sustrans is the UK's leading sustainable transport charity.	See timetable displays at bus stops. www.traveline.info 0871 200 22 33 calls cost 15p per minute plus your phone company's access charge	Find the bus times for your stop. Search for a bus stop by entering a postcode, street & town or a stop name & town.	plusbus.info A discount price 'bus pass' that you buy with your train ticket. It gives you unlimited bus travel around your chosen town, on participating buses.

National Rail Enquiries

Online	NRE App	Social Media	Alert Me	Contact Centre	PlusBike
nationalrail.co.uk	Free National Rail Enquiries app for iOS and Android	facebook.com/nationalrailenq @nationalrailenq	You can sign up to Alert Me messages on the National Rail Enquiries website where you can receive train and platform notifications directly to your smart phone. nationalrail.co.uk/alertme	03457 48 49 50 Calls cost no more than calls to geographic numbers (01 or 02) and may be recorded.	nationalrail.co.uk/plusbike For more information.



National Rail
Britain's train companies working together



This poster shows details of popular destinations and main, frequent bus routes. Additional services may run, so please check with Traveline or see posters at local bus stops. Whilst considerable care has been taken to ensure the information contained on this poster is correct and accurate, National Rail cannot accept responsibility for any loss or inconvenience caused by any errors or omissions, or for loss, damage, injury or inconvenience relating to the cancellation, alteration, delay or diversion of a service. For any feedback, please e-mail comments@onwardtravelposters.com

Scan this code with your mobile for full station information.