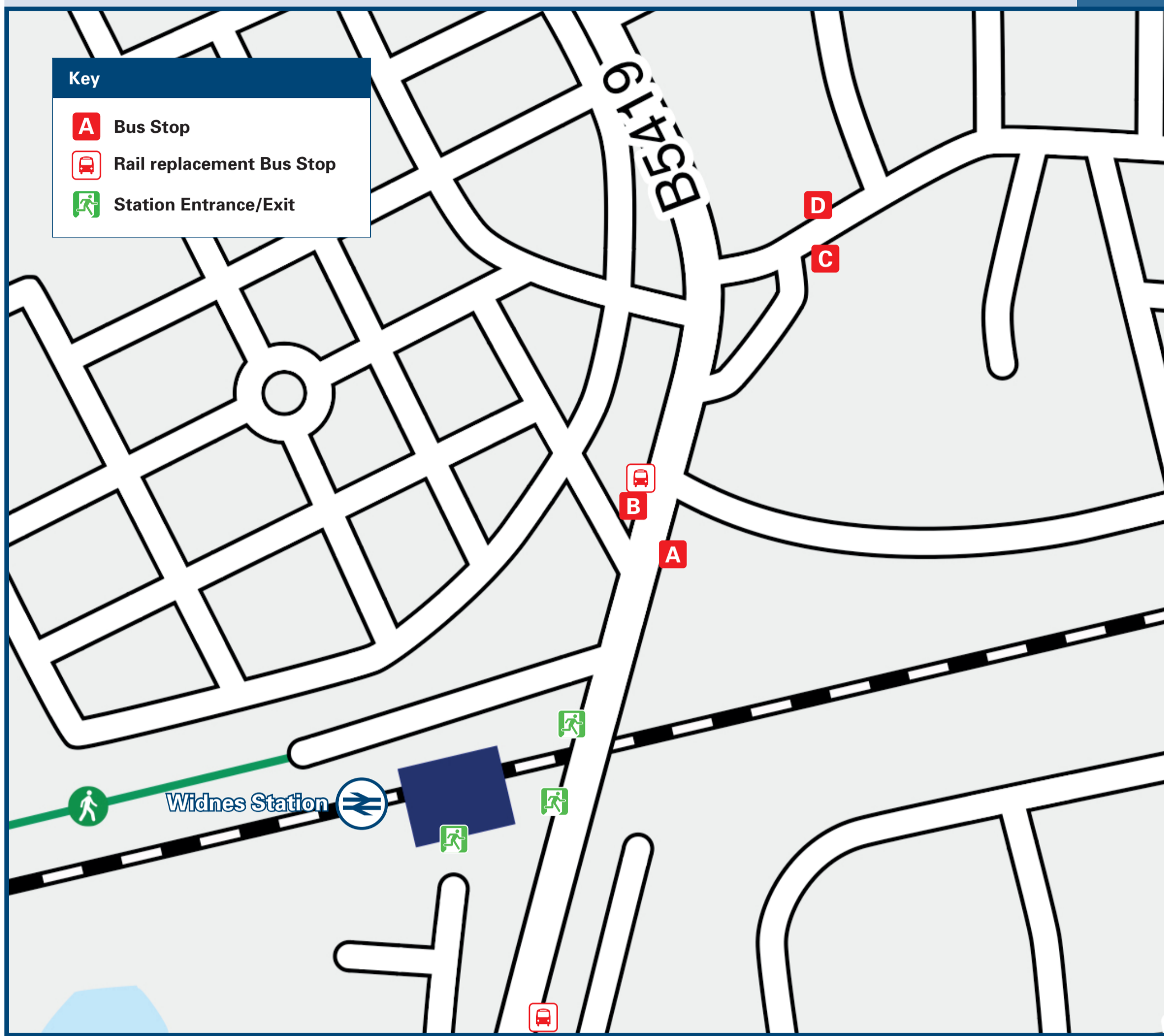




Widnes Station

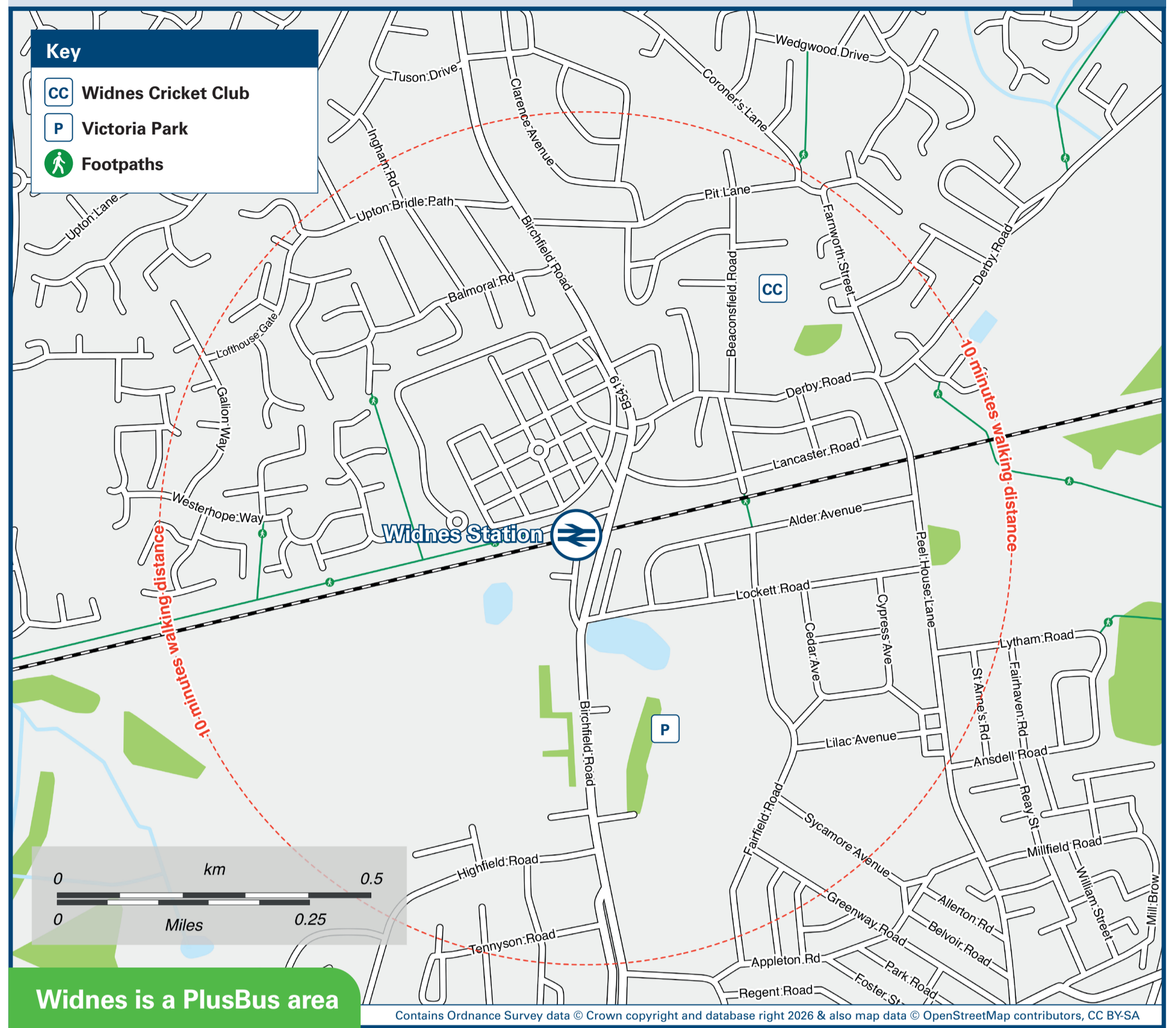
Onward Travel Information

Buses



Rail replacement Pick Up / Drop Off on Birchfield Road - at the service bus stop adjacent to the cemetery wall for services towards Warrington and in the layby at the entrance to Victoria Park for services towards Liverpool.

Local area map



Widnes is a PlusBus area



Add PlusBus to your train ticket—now available on eTicket from leading rail ticketing apps—for unlimited bus travel in the PlusBus zone in your destination town or city. Visit www.plusbus.info

Main destinations by bus

(Data correct at February 2026)



DESTINATION	BUS ROUTES	BUS STOP
Clock Face	17	B
● Farnworth	61	C
● Halton Hospital	61	D
Huyton	61	C
Lea Green Rail station	17	B
Peasley Cross, St Helen's Retail Park	17	B
Prescot	61	C

DESTINATION	BUS ROUTES	BUS STOP
Rainhill Stoops	61	C
● Runcorn	61	D
Sherdley Park	17	B
St Ann's	61	C
St Helens	17	B
St Helens Hospital	17	B
Sutton Manor	17	B

DESTINATION	BUS ROUTES	BUS STOP
● Widnes (Green Oaks Shopping Centre)	17	A
	61	D
Whiston Hospital	61	C
Windy Arbor	61	C

Notes

● PlusBus destination, please see below for details. Bus route 17 & 61 operate daily services, Mondays to Sundays. For bus times and days of operation please contact Traveline on www.traveline.info or call: 0871 200 22 33

Taxis

Widnes Station has no taxi rank or cab office. Advance booking is essential, please consider using the following local operators: (Inclusion of this number doesn't represent any endorsement of the taxi firm)

Halton Town Taxis
0151 394 4404

Alpha Taxis Widnes
0151 424 0606

Veezu
0151 424 5577

Further information about all onward travel

Local Cycle Info halton.gov.uk For more information about cycle routes.	National Cycle Info sustrans.org.uk Sustrans is the UK's leading sustainable transport charity.	Bus Times See timetable displays at bus stops. www.traveline.info 0871 200 22 33 calls cost 13p per minute plus your phone company's access charge	PlusBus plusbus.info PlusBus is a discount price 'bus pass' that you buy with your train ticket. It gives you unlimited bus travel around your chosen town, on participating buses. Visit www.plusbus.info
---	---	---	---



National Rail Enquiries

Online nationalrail.co.uk	NRE App Free National Rail Enquiries app for iOS and Android	Social Media facebook.com/nationalrailenq @nationalrailenq	Alert Me You can sign up to Alert Me messages on the National Rail Enquiries website where you can receive train and platform notifications directly to your smart phone. nationalrail.co.uk/alertme	Contact Centre 03457 48 49 50 Calls cost no more than calls to geographic numbers (01 or 02) and may be recorded.	PlusBike nationalrail.co.uk/plusbike For more information.
---	--	---	---	--	--



This poster shows details of popular destinations and main, frequent bus routes. Additional services may run, so please check with Traveline or see posters at local bus stops. Whilst considerable care has been taken to ensure the information contained on this poster is correct and accurate, National Rail cannot accept responsibility for any loss or inconvenience caused by any errors or omissions, or for loss, damage, injury or inconvenience relating to the cancellation, alteration, delay or diversion of a service. For any feedback, please e-mail comments@onwardtravelposters.com

Scan this code with your mobile for full station information.