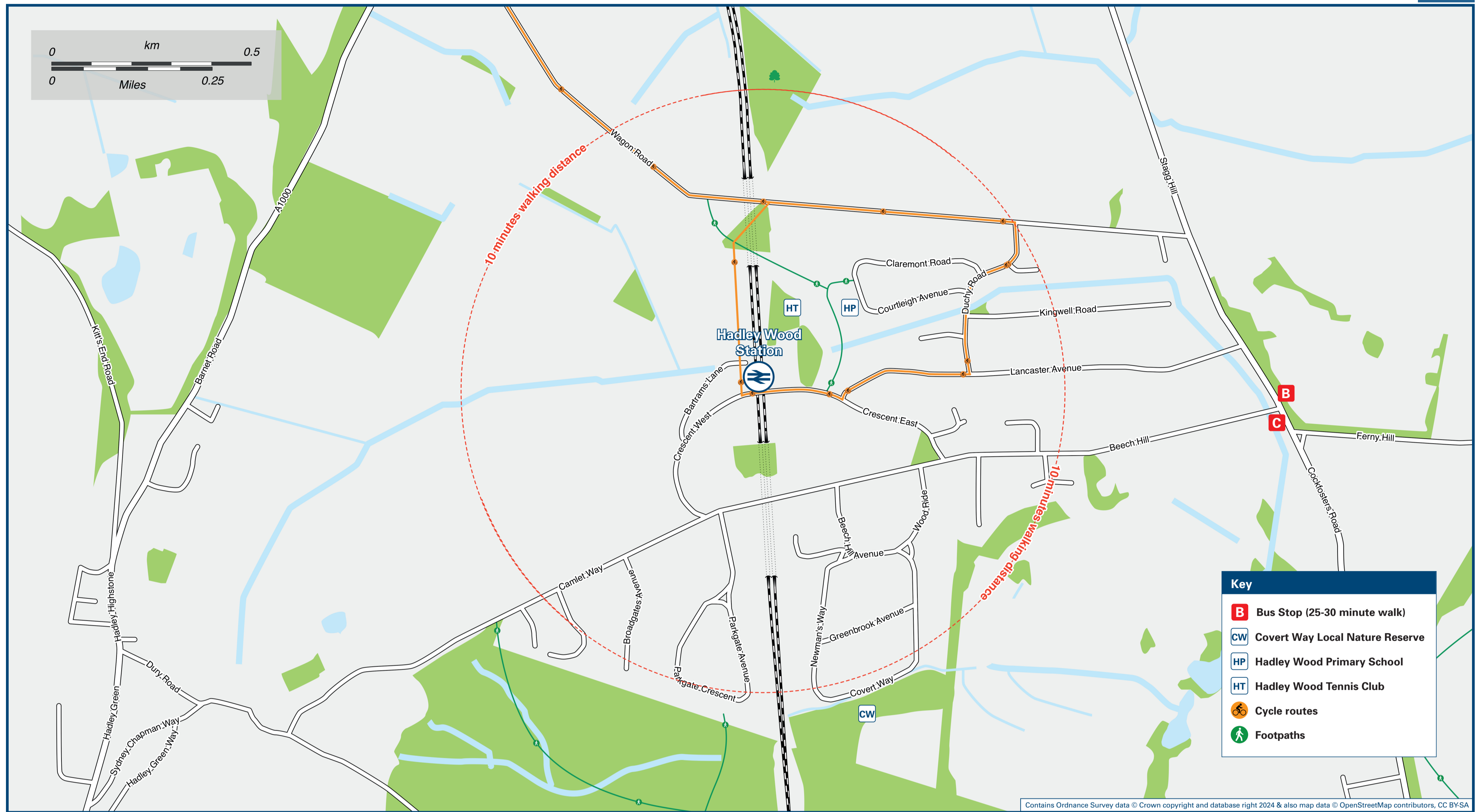




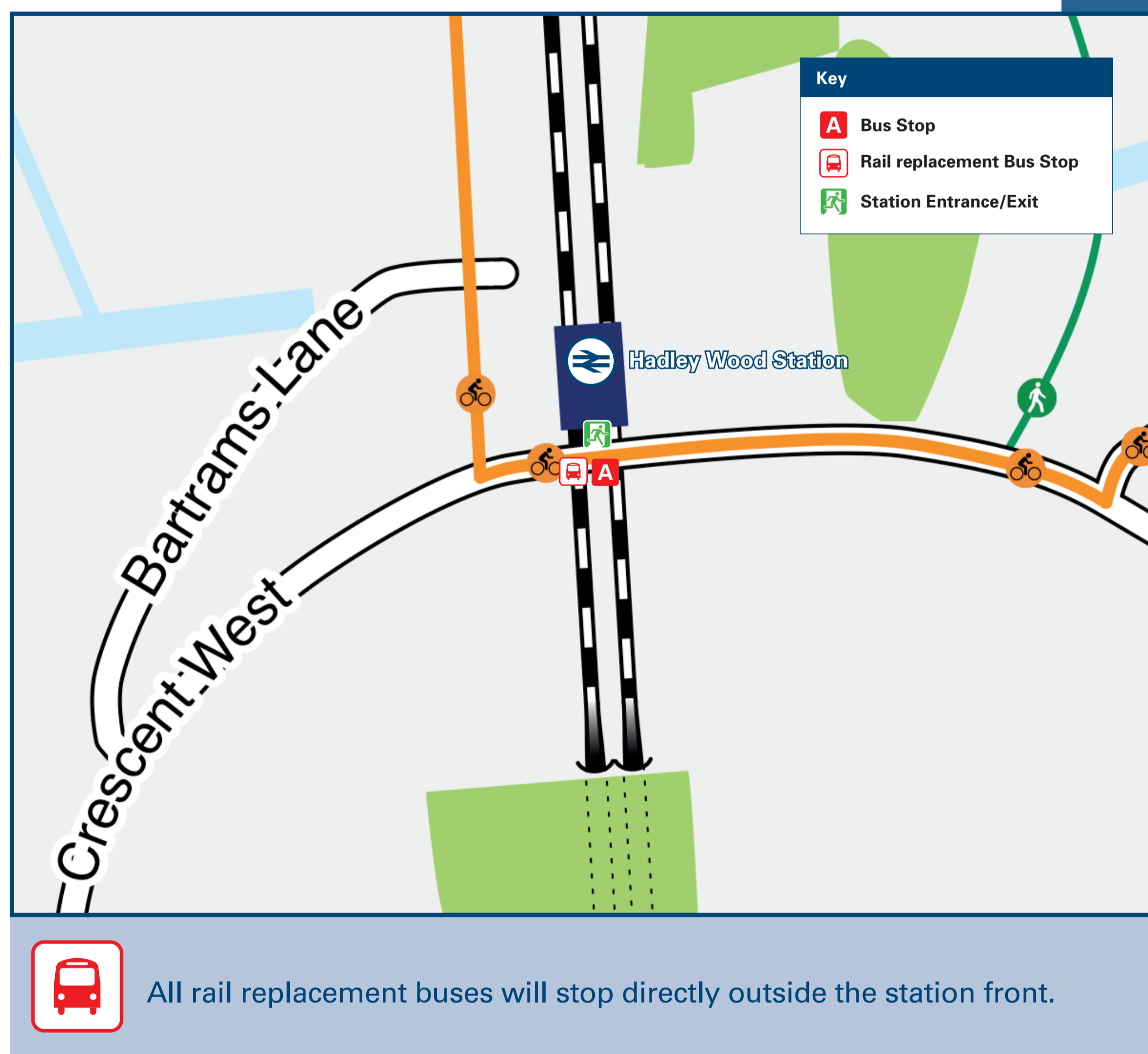
Hadley Wood Station

Onward Travel Information

Local area map



Buses



All rail replacement buses will stop directly outside the station front.

Main destinations by bus

(Data correct at May 2024)

DESTINATION	BUS ROUTES	BUS STOP
Barnet/Spires Shopping Centre	399	A
Hadley Green	399	A
Monken Hadley	399	A

Notes

Service 399 operates a limited frequency on Mondays to Saturdays (including Good Friday) and only between 10.03 & 14.03. Additional bus services are available from Cockfosters Road (approximately 25-30 minutes walk from the Station - see Local Area Map) From Beech Hill stop (C) (near side of Cockfosters Road) service 298 runs daily to Potters Bar, and service 610 runs a Mondays to Saturdays service to Luton. From Beech Hill stop (B) (far side of Cockfosters Road) service 298 runs daily to Arnos Grove, and service 610 runs a Mondays to Saturdays service to Cockfosters London Underground Station.

Taxis

Hadley Wood Station has no taxi rank or cab office. Advance booking is essential, please consider using the following local operators: (Inclusion of this number doesn't represent any endorsement of the taxi firm)

Station Cars
020 8449 0000

Cockfosters Cars
020 8275 7888

Alpha Cars Barnet
020 8447 1000

Further information about all onward travel

Local Cycle Info enfield.gov.uk For more information about cycle routes.	National Cycle Info sustrans.org.uk Sustrans is the UK's leading sustainable transport charity.	Bus Times See timetable displays at bus stops. www.traveline.info 0871 200 22 33 call cost 13p per minute plus your phone company's access charge	NextBuses Find the bus times for your stop. Search for a bus stop by entering a postcode, street & town or a stop name & town.	PlusBus plusbus.info A discount price 'bus pass' that you buy with your train ticket. It gives you unlimited bus travel around your chosen town, on participating buses.
---	---	--	---	---

National Rail Enquiries

Online nationalrail.co.uk	NRE App Free National Rail Enquiries app for iOS and Android	Social Media facebook.com/nationalrailenq @nationalrailenq	Alert Me You can sign up to Alert Me messages on the National Rail Enquiries website where you can receive train and platform notifications directly to your smart phone. nationalrail.co.uk/alertme	Contact Centre 03457 48 49 50 Calls cost no more than calls to geographic numbers (01 or 02) and may be recorded.	PlusBike nationalrail.co.uk/plusbike For more information.
---	--	---	---	--	--

Great Northern



National Rail
Britain's train companies working together

