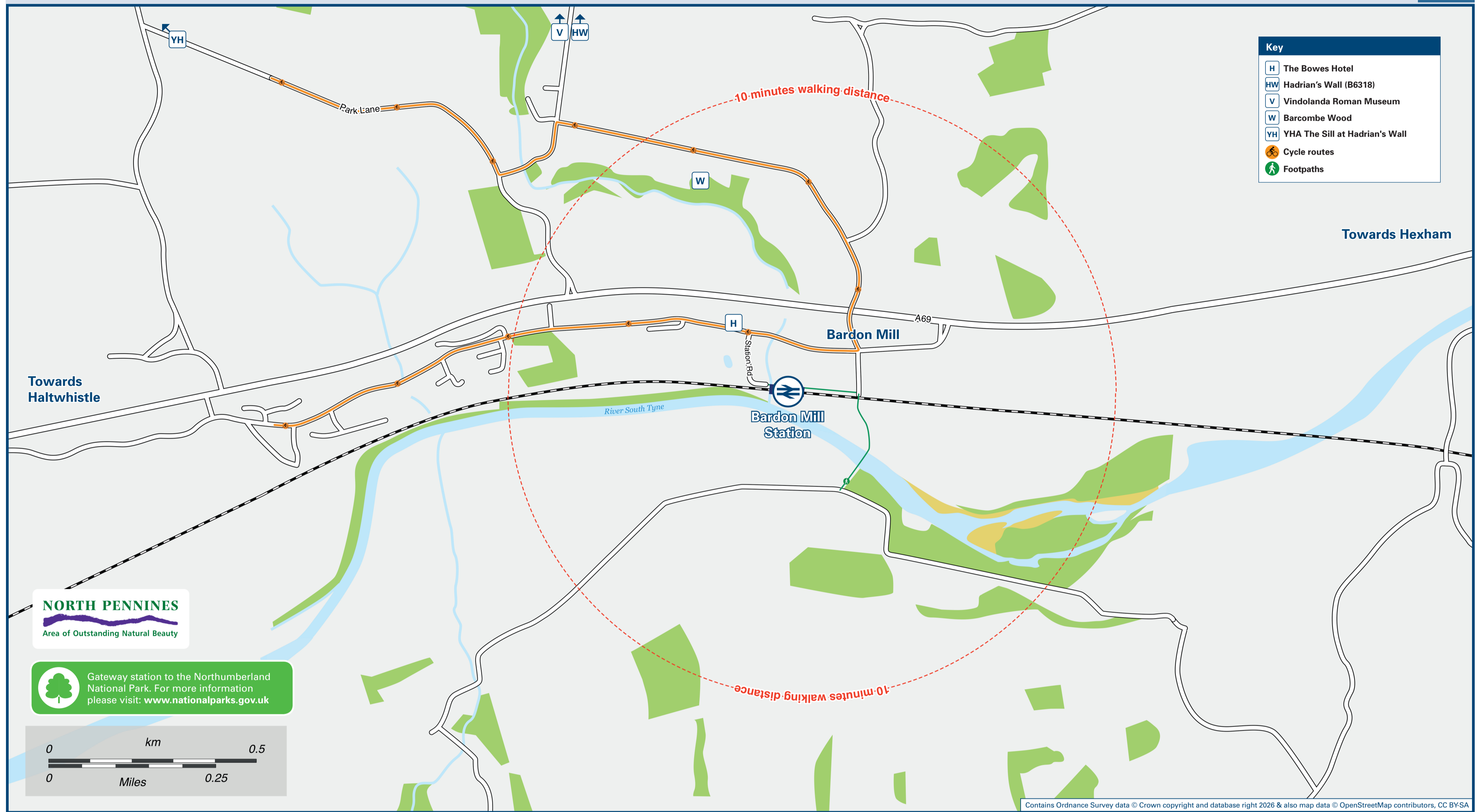




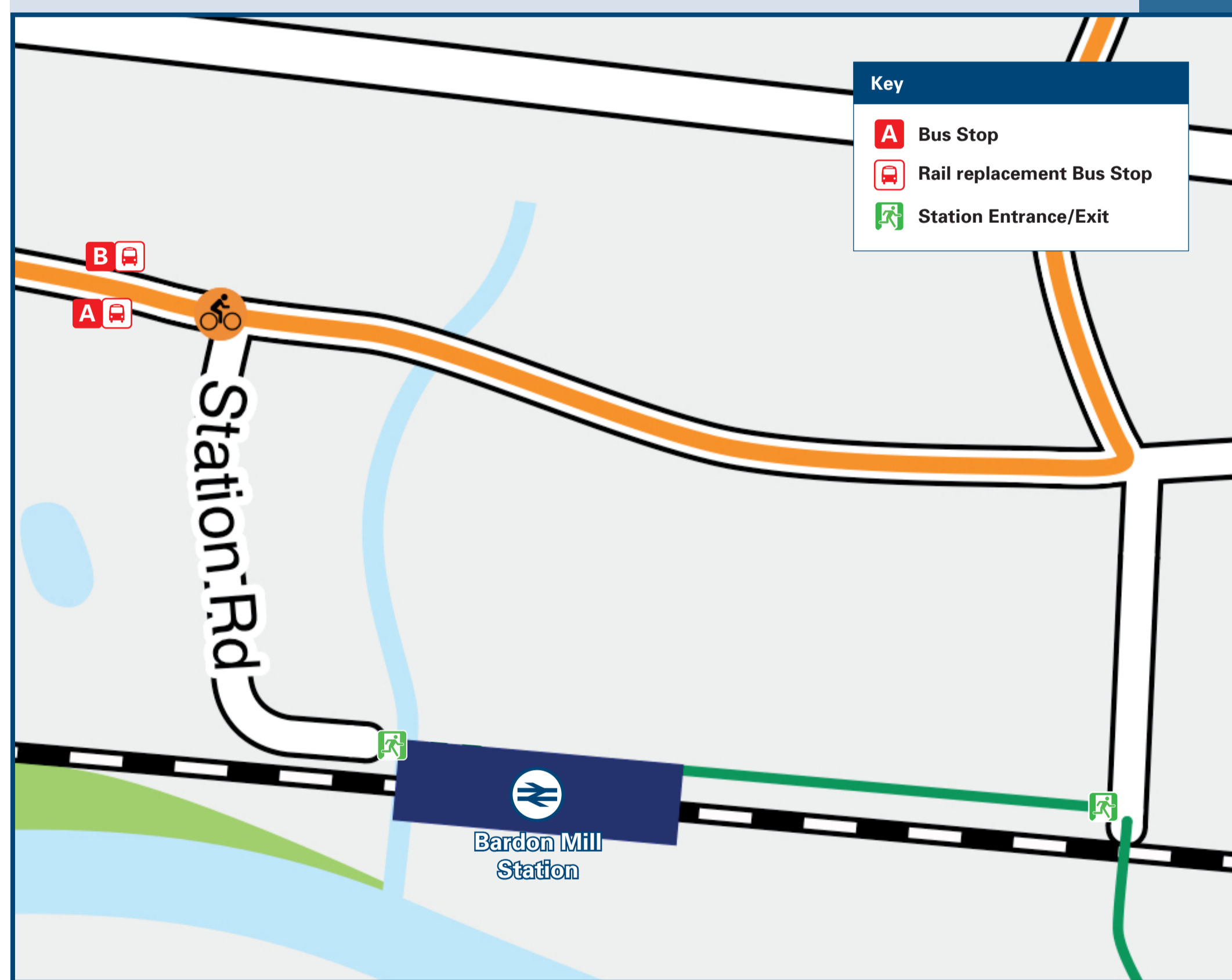
Bardon Mill Station

Onward Travel Information

Local area map



Buses



Rail replacement buses will Pick Up / Drop Off at the bus stops opposite Bowes Hotel (towards Carlisle) and outside Bowes Hotel (towards Newcastle)

Main destinations by bus

(Data correct at March 2026)

DESTINATION	BUS ROUTES	BUS STOP
Brampton	685	A
Carlisle	685	A
Corbridge	685	B
Greenhead	685	A
Haltwhistle	685	A
Haydon Bridge	685	B
Heddon-on-the-Wall	685	B
Hexham	685	B
Horsley	685	B
Melkridge	685	A
Newcastle upon Tyne	685	B
Throckley	685	B

Notes

Bus route 685 operates a daily service.
For bus times and days of operation please contact Traveline on www.traveline.info or call: 0871 200 22 33

Direct trains operate to this destination from Bardon Mill
AONB North Pennines AONB; www.northpennines.org.uk/
National Park Northumberland National Park; www.northumberlandnationalpark.org.uk/

Taxis

Bardon Mill station has no taxi rank or cab office. Advance booking is essential, please consider using the following local operators: (Inclusion of this number doesn't represent any endorsement of the taxi firm)

Haydon Taxis (Haydon)
01434 671 197

Sproul Taxis (Haltwhistle)
07712 321 064

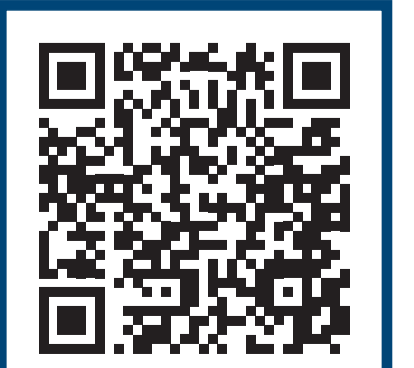
Ecocabs (Hexham)
01434 600 600

Further information about all onward travel

Local Cycle Info northumberland.gov.uk For more information about cycle routes.	National Cycle Info walkwheelcycletrust.org.uk	Bus Times See timetable displays at bus stops. www.traveline.info 0871 200 22 33 call cost 13p per minute plus your phone company's access charge	PlusBus plusbus.info PlusBus is a discount price 'bus pass' that you buy with your train ticket. It gives you unlimited bus travel around your chosen town, on participating buses. Visit www.plusbus.info
-----------------------------------------------------------------------------------------------------------------------------------------	----------------------------------------------------------------------------------------------------------	------------------------------------------------------------------------------------------------------------------------------------------------------------------------------------------------------------------	-----------------------------------------------------------------------------------------------------------------------------------------------------------------------------------------------------------------------------------------------------------------------------------------------------

National Rail Enquiries

Online nationalrail.co.uk	NRE App Free National Rail Enquiries app for iOS and Android	Social Media facebook.com/nationalrailenq @nationalrailenq	Alert Me You can sign up to Alert Me messages on the National Rail Enquiries website where you can receive train and platform notifications directly to your smart phone. nationalrail.co.uk/alertme	Contact Centre 03457 48 49 50 Calls cost no more than calls to geographic numbers (01 or 02) and may be recorded.	PlusBike nationalrail.co.uk/plusbike For more information.
-----------------------------------------------------------------------------	------------------------------------------------------------------------	-------------------------------------------------------------------------	-------------------------------------------------------------------------------------------------------------------------------------------------------------------------------------------------------------------------------------------------------------------	--------------------------------------------------------------------------------------------------------------------------------	------------------------------------------------------------------------------------------------------------------------------



This poster shows details of popular destinations and main, frequent bus routes. Additional services may run, so please check with Traveline or see posters at local bus stops. Whilst considerable care has been taken to ensure the information contained on this poster is correct and accurate, National Rail cannot accept responsibility for any loss or inconvenience caused by any errors or omissions, or for loss, damage, injury or inconvenience relating to the cancellation, alteration, delay or diversion of a service. For any feedback, please e-mail comments@onwardtravelposters.com

Scan this code with your mobile for full station information.