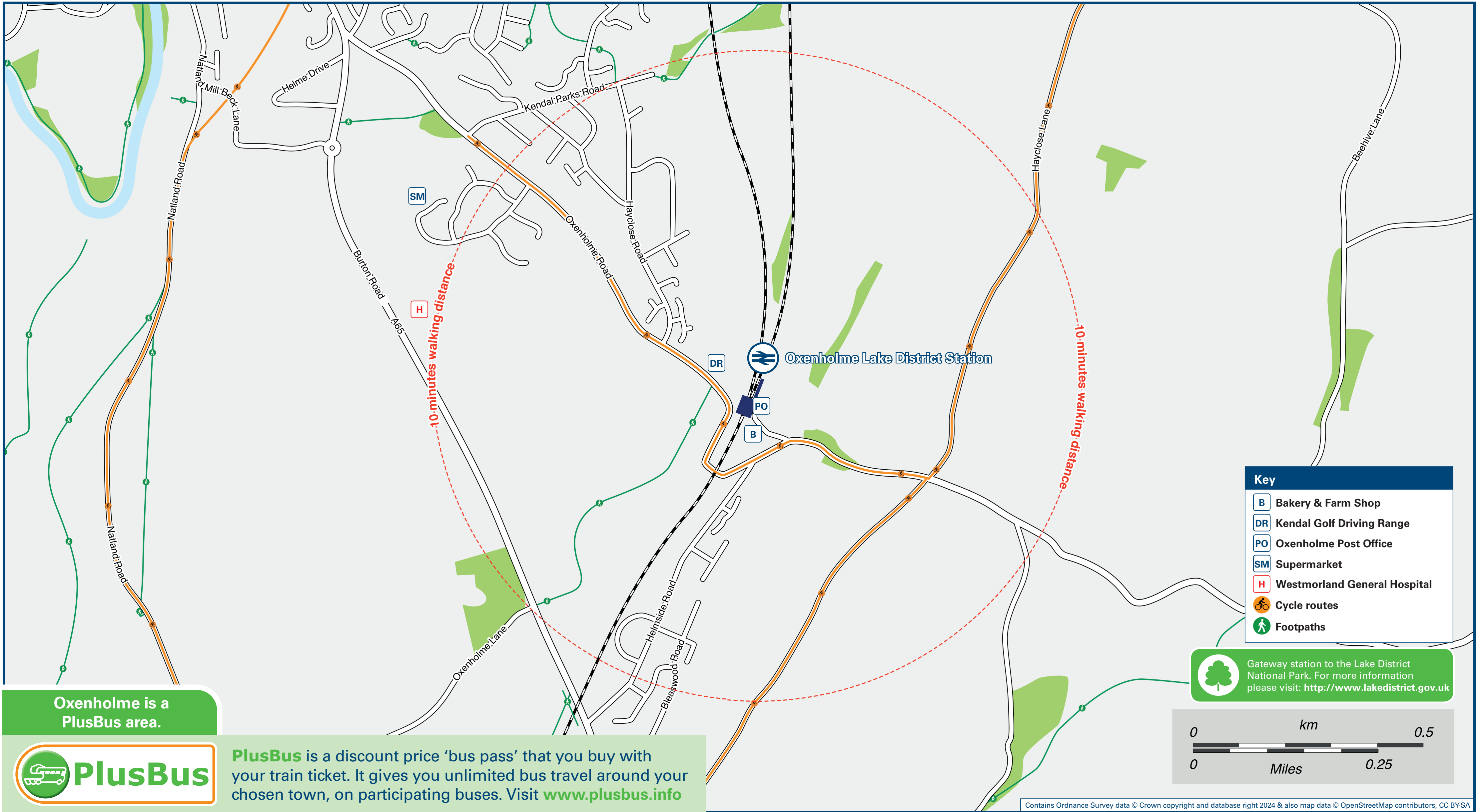




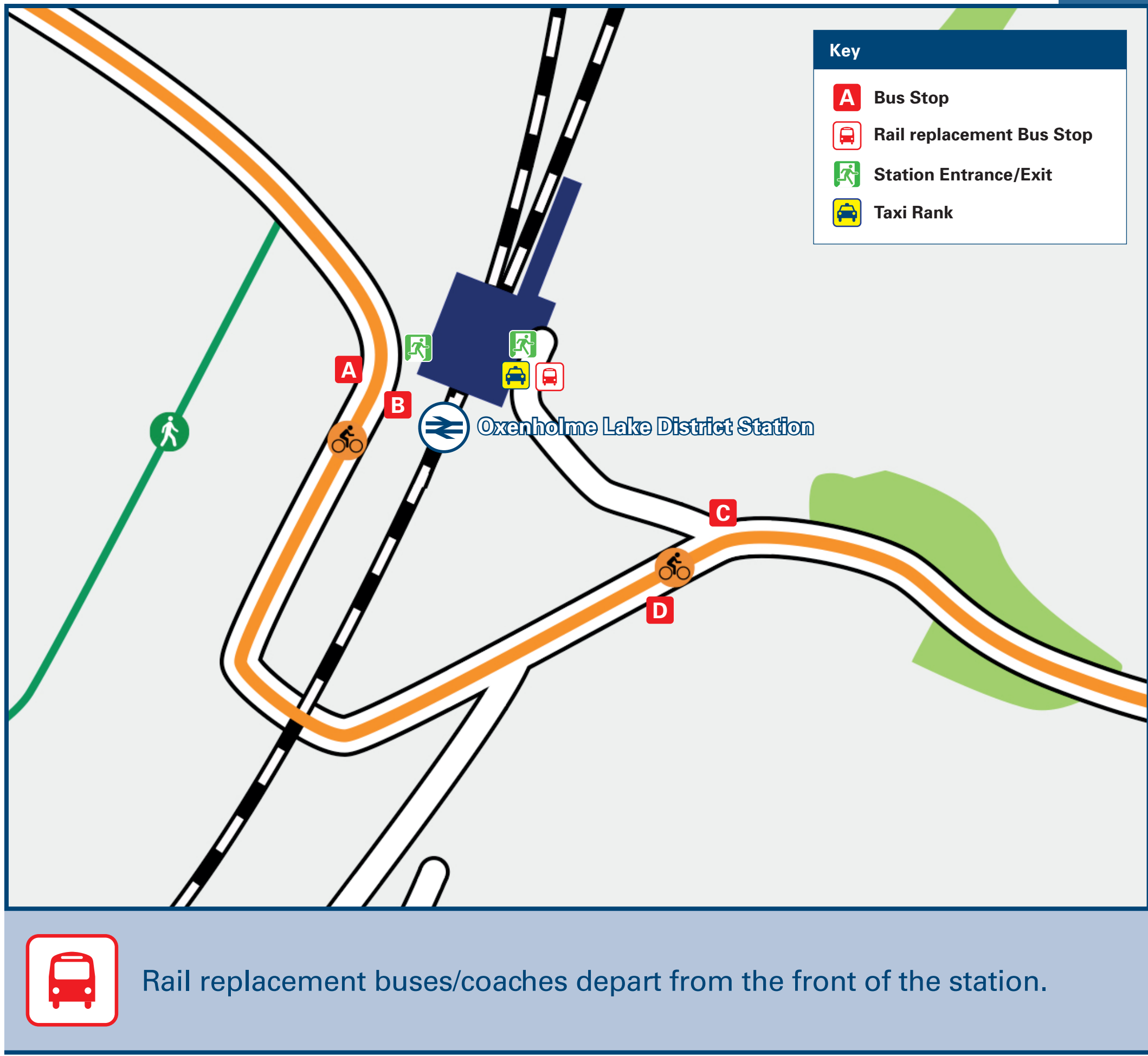
# Oxenholme Lake District Station

## Onward Travel Information

### Local area map



### Buses and Taxis



### Main destinations by bus

(Data correct at September 2024)

DESTINATION	BUS ROUTES	BUS STOP
Cautley	563**	B
Dent Village	S1~	C
Kendal Leisure Centre	40*, 41	B
	41A	A
	S1~	D
	40*, 41	B
Kendal Town Centre	41A, 563**, 567#	A
	S1~	D
Kirkby Stephen	563**	B
Oxenholme (Helmside Road)	41	B
	563**	B
Sedbergh	S1~	C
	40*, 41	B
Westmorland General Hospital	40*, 41	B

**Notes**

- PlusBus destination, please see below for details. Bus routes 41 and 41A run Mondays to Saturdays, only. For bus times please see bus stop timetables or contact Traveline. Plusbus tickets are valid only within the Kendal & Oxenholme Plusbus zone on Stagecoach Buses. Not valid on route S1.
- Direct trains operate to this destination from this Station.
- # Bus route 567 departs from outside this Station (Stop A) Mondays to Fridays only, at 0810.
- \* Bus route 40 runs on Sundays, only.
- ~ Bus route S1 runs a limited service on Wednesdays and Saturdays, only.
- \*\* Bus route 563 runs a very limited daytime Mondays to Saturdays service, only.

National Park The Lake District National Park; [www.lakedistrict.gov.uk](http://www.lakedistrict.gov.uk)

### Taxis

Oxenholme Lake District station is served by a taxi rank or cab office. Check availability before travelling, and pre-book if necessary. Please consider using the following local operators: (Inclusion of this number doesn't represent any endorsement of the taxi firm)

**Oxenholme Taxis**  
07369 226 675

**K Cars Kendal**  
0800 049 9488

**Lakeside Taxis**  
01539 239 239

### Further information about all onward travel

Local Cycle Info	National Cycle Info	Bus Times	NextBuses	PlusBus
<a href="http://southlakeland.gov.uk">southlakeland.gov.uk</a> For more information about cycle routes.	<a href="http://sustrans.org.uk">sustrans.org.uk</a> Sustrans is the UK's leading sustainable transport charity.	See timetable displays at bus stops. <a href="http://www.traveline.info">www.traveline.info</a> 0871 200 22 33 calls cost 15p per minute plus your phone company's access charge	Find the bus times for your stop. Search for a bus stop by entering a postcode, street & town or a stop name & town.	<a href="http://plusbus.info">plusbus.info</a> A discount price 'bus pass' that you buy with your train ticket. It gives you unlimited bus travel around your chosen town, on participating buses.

### National Rail Enquiries

Online	NRE App	Social Media	Alert Me	Contact Centre	PlusBike
<a href="http://nationalrail.co.uk">nationalrail.co.uk</a>	Free National Rail Enquiries app for iOS and Android	<a href="https://www.facebook.com/nationalrailenq">facebook.com/nationalrailenq</a> <a href="https://twitter.com/nationalrailenq">@nationalrailenq</a>	You can sign up to Alert Me messages on the National Rail Enquiries website where you can receive train and platform notifications directly to your smart phone. <a href="http://nationalrail.co.uk/alertme">nationalrail.co.uk/alertme</a>	03457 48 49 50 Calls cost no more than calls to geographic numbers (01 or 02) and may be recorded.	<a href="http://nationalrail.co.uk/plusbike">nationalrail.co.uk/plusbike</a> For more information.



**National Rail**  
Britain's train companies working together



This poster shows details of popular destinations and main, frequent bus routes. Additional services may run, so please check with Traveline or see posters at local bus stops. Whilst considerable care has been taken to ensure the information contained on this poster is correct and accurate, National Rail cannot accept responsibility for any loss or inconvenience caused by any errors or omissions, or for loss, damage, injury or inconvenience relating to the cancellation, alteration, delay or diversion of a service. For any feedback, please e-mail [comments@onwardtravelposters.com](mailto:comments@onwardtravelposters.com)

Scan this code with your mobile for full station information.