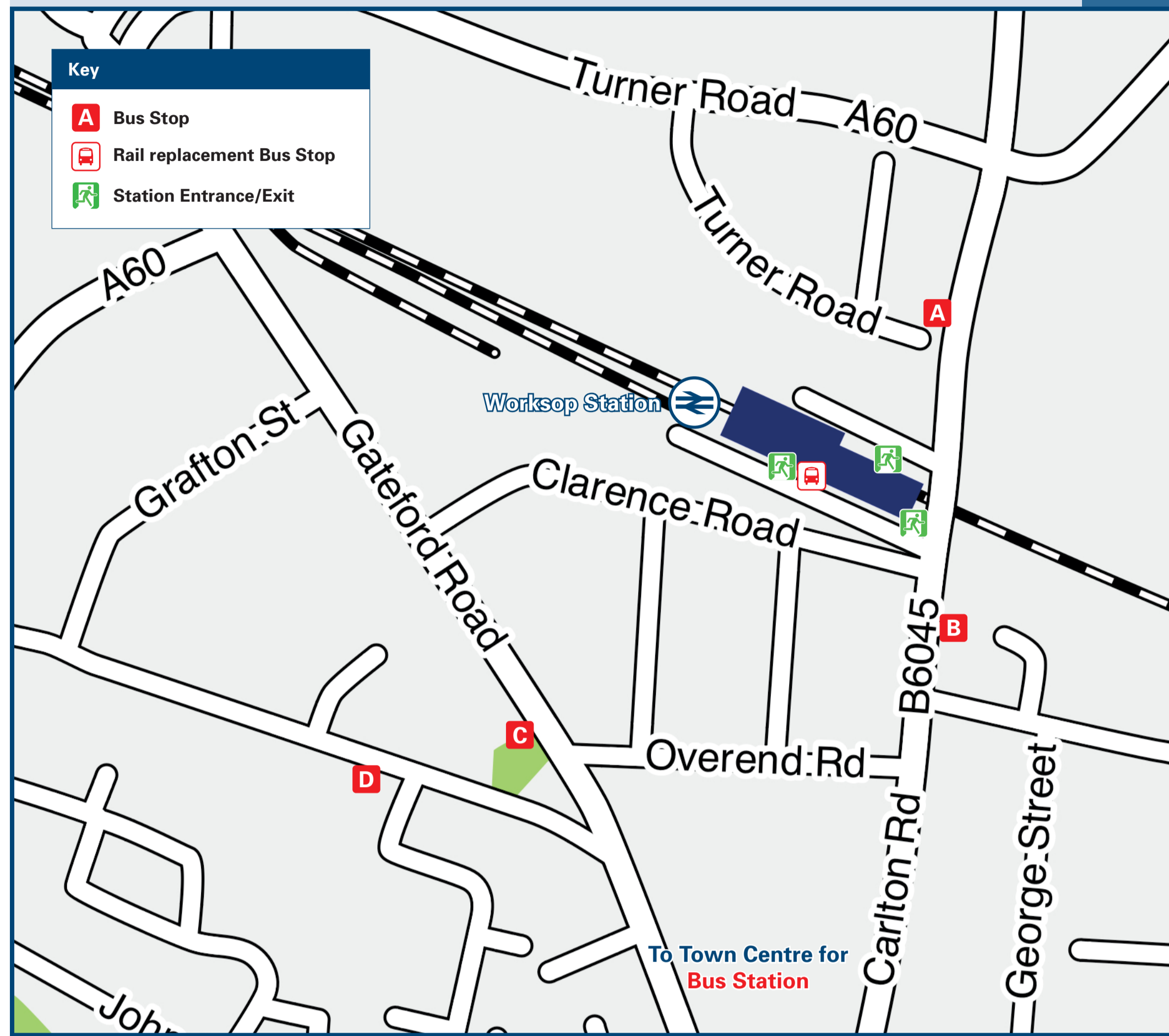




Workshop Station

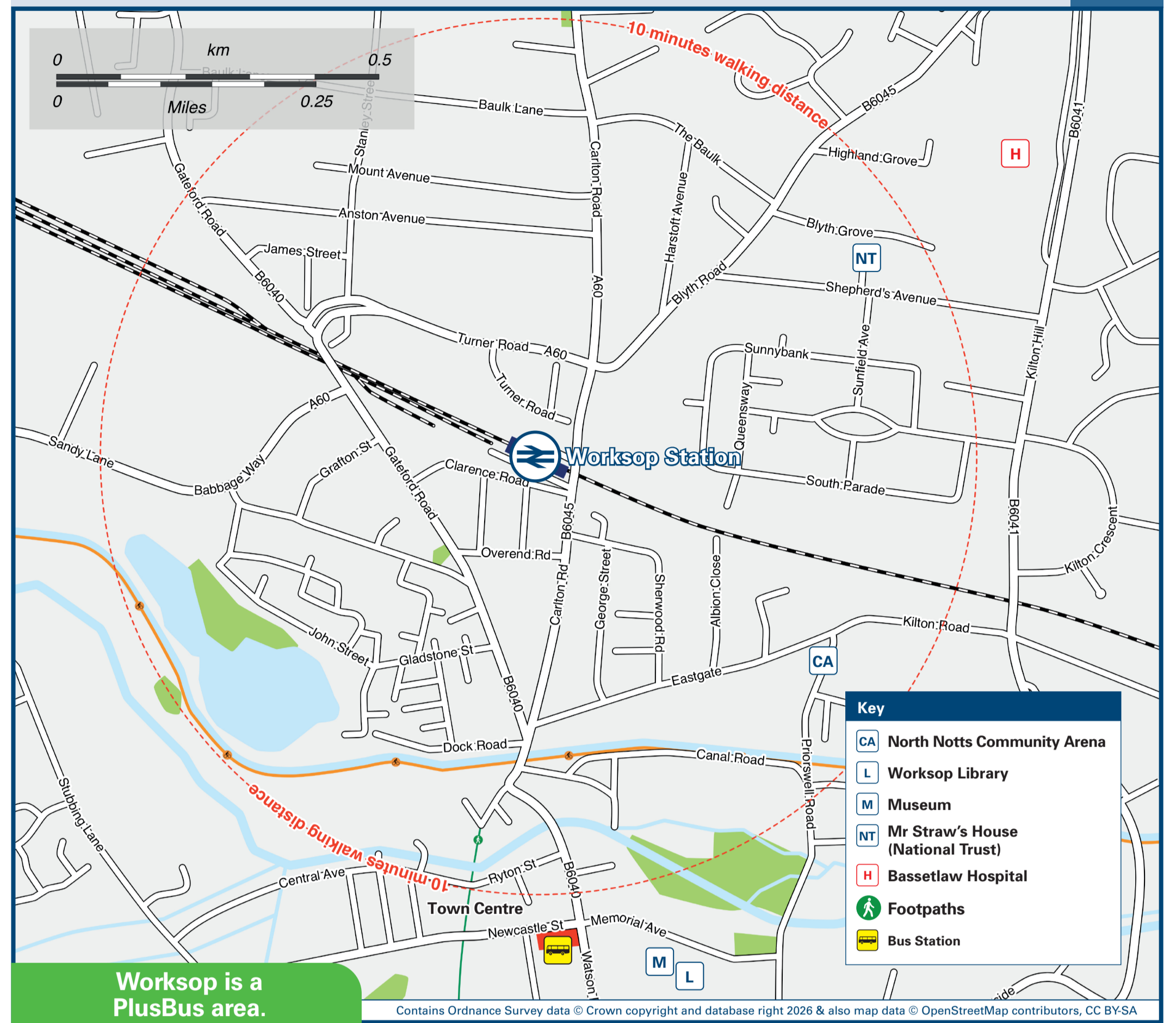
Onward Travel Information

Buses



Rail replacement transport pick up/drop off in the car park, at the Station front.

Local area map



Workshop is a PlusBus area.



Add PlusBus to your train ticket—now available on eTicket from leading rail ticketing apps—for unlimited bus travel in the PlusBus zone in your destination town or city. Visit www.plusbus.info

Main destinations by bus

(Data correct at February 2026)



DESTINATION	BUS ROUTES	BUS STOP
Bawtry	21, 25	A
Bircotes	21, 25	A
Blyth	25	A
Carlton in Lindrick	21, 22	A
Dinnington	19, 19a	C
Doncaster	21, 22, 25	A
Gateford	6#, 19, 19a	C
	7#	D
Harworth	21, 25	A
Langold	21, 22	A
Laughton Common	19, 19a	C
Laughton-en-le-Morthen	19, 19a	C
Manton (South Avenue)	42#, 43#	B
Manton Wood Enterprise Park	42#	B
North Anston	19, 19a	C
Oldcotes	21, 22	A
Ranby (also HM Prison Ranby)	43#	B
Retford	43#	B
Rhodesia	6#(via Shireoaks)	C
	7#	D

DESTINATION	BUS ROUTES	BUS STOP
Rotherham	19, 19a	C
Shireoaks	6#	C
	7#	D
South Anston	19	C
Thurcroft	19, 19a	C
Tickhill	22	A
Wadworth	22	A
Woodsetts	19a	C
Workshop (Asda, Sandy Lane)	6#(via Shireoaks)	C
	7#	D
Workshop (Bassetlaw Hospital)	22, 25, 42#, 43#	A
Workshop (Coniston Road)	6#	C
	7#	D
Workshop (Gateford Road)	6#, 19, 19a	C
	7#	D
Workshop (Eddison Park Avenue)	6#	C
	7#	D
Workshop (Prince Charles Road)	7#	D
	6#	C

DESTINATION	BUS ROUTES	BUS STOP
Workshop (Sainsbury's, High Grounds Road)	6#(via Shireoaks)	C
	7#	D
Workshop (Thievesdale Lane for Hemmingfields)	22, 42#, 43#	A
Workshop (Town Centre / Bus Station)	21, 22, 25, 42#, 43#	B
Workshop (Valley Road)	7#	D
	6#	C
Workshop (Wensleydale)	42#, 43#	A

Notes

- PLUSBUS destination, please see below for details.
- Bus routes 19 & 25 operates services on Mondays to Saturdays, only. No Sunday service.
- Bus routes 19a, 21 and 22 operate daily services, Mondays to Sundays.
- For bus times and days of operation please contact Traveline on www.traveline.info or call: 0871 200 22 33
- Direct trains operate to this destination from Workshop.
- It's a 10 to 15 minutes walk from this station to Workshop town centre and bus station, see Local area map for walking route.
- Additional bus services including Workshop town service (Nottsbus Connect 108) depart from the bus station.
- Bus routes 6, 7, 42 & 43 operate limited services on Mondays to Saturdays, only. No Sunday services.

Taxis

Workshop station has no taxi rank or cab office. Advance booking is essential, please consider using the following local operators: (Inclusion of this number doesn't represent any endorsement of the taxi firm)

Four 2's Private Hire
01909 472 222

Nunns Taxis
01905 500 005

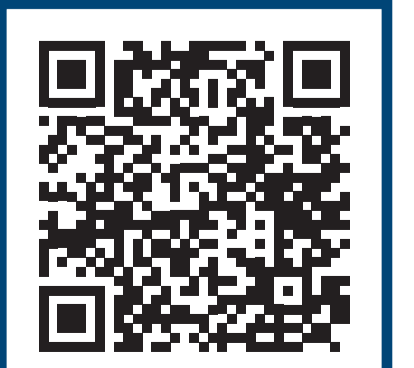
Tommy's Taxis
07312 114 114

Further information about all onward travel

Local Cycle Info bassetlaw.gov.uk For more information about cycle routes.	National Cycle Info walkwheelcycletrust.org.uk	Bus Times See timetable displays at bus stops. www.traveline.info 0871 200 22 33 call cost 15p per minute plus your phone company's access charge	PlusBus plusbus.info PlusBus is a discount price 'bus pass' that you buy with your train ticket. It gives you unlimited bus travel around your chosen town, on participating buses. Visit www.plusbus.info
---	--	--	---

National Rail Enquiries

Online nationalrail.co.uk	NRE App Free National Rail Enquiries app for iOS and Android	Social Media facebook.com/nationalrailenq @nationalrailenq	Alert Me You can sign up to Alert Me messages on the National Rail Enquiries website where you can receive train and platform notifications directly to your smart phone. nationalrail.co.uk/alertme	Contact Centre 03457 48 49 50 Calls cost no more than calls to geographic numbers (01 or 02) and may be recorded.	PlusBike nationalrail.co.uk/plusbike For more information.
---	--	---	---	--	--



This poster shows details of popular destinations and main, frequent bus routes. Additional services may run, so please check with Traveline or see posters at local bus stops. Whilst considerable care has been taken to ensure the information contained on this poster is correct and accurate, National Rail cannot accept responsibility for any loss or inconvenience caused by any errors or omissions, or for loss, damage, injury or inconvenience relating to the cancellation, alteration, delay or diversion of a service. For any feedback, please e-mail comments@onwardtravelposters.com

Scan this code with your mobile for full station information.