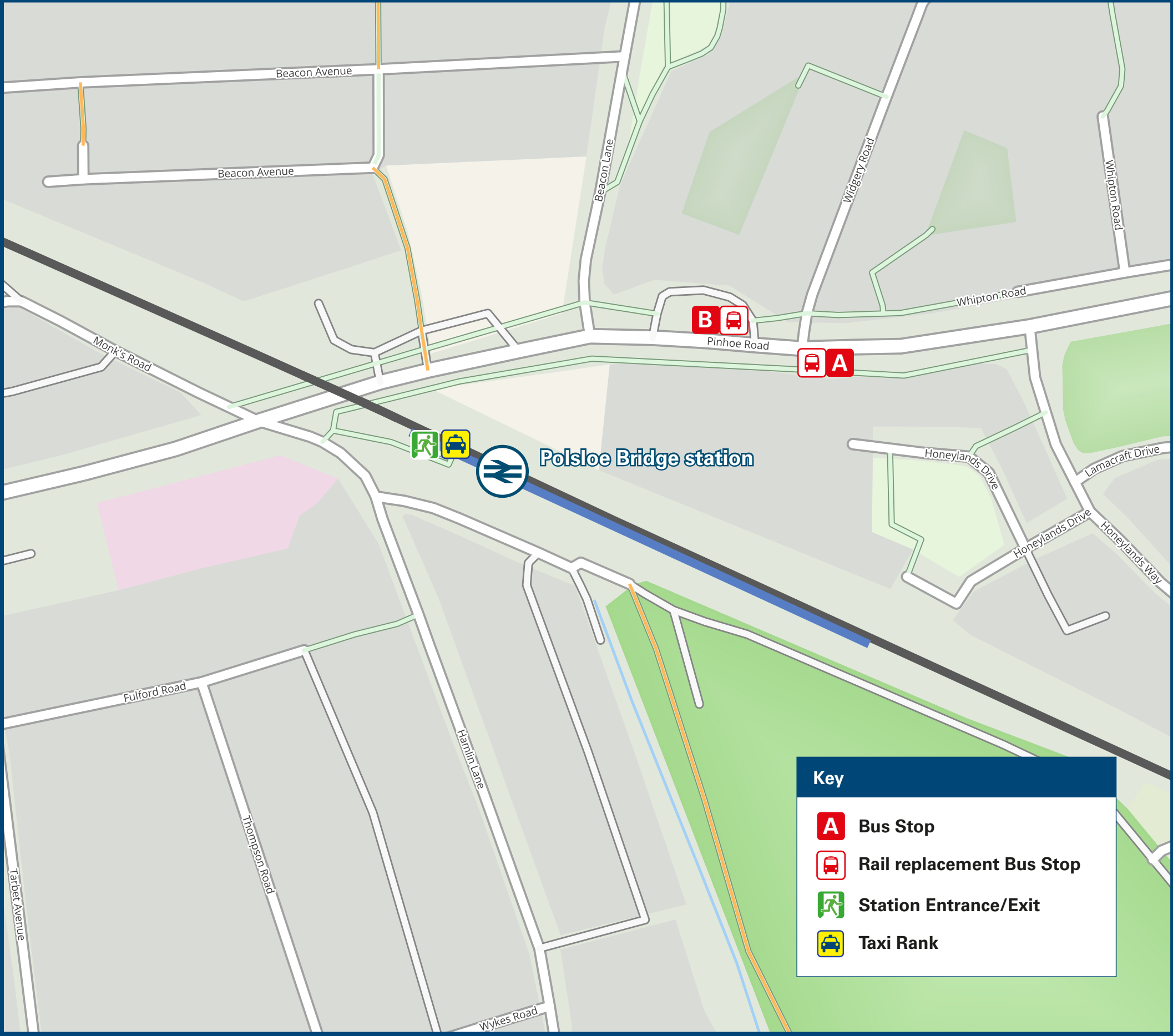




Polisloe Bridge Station

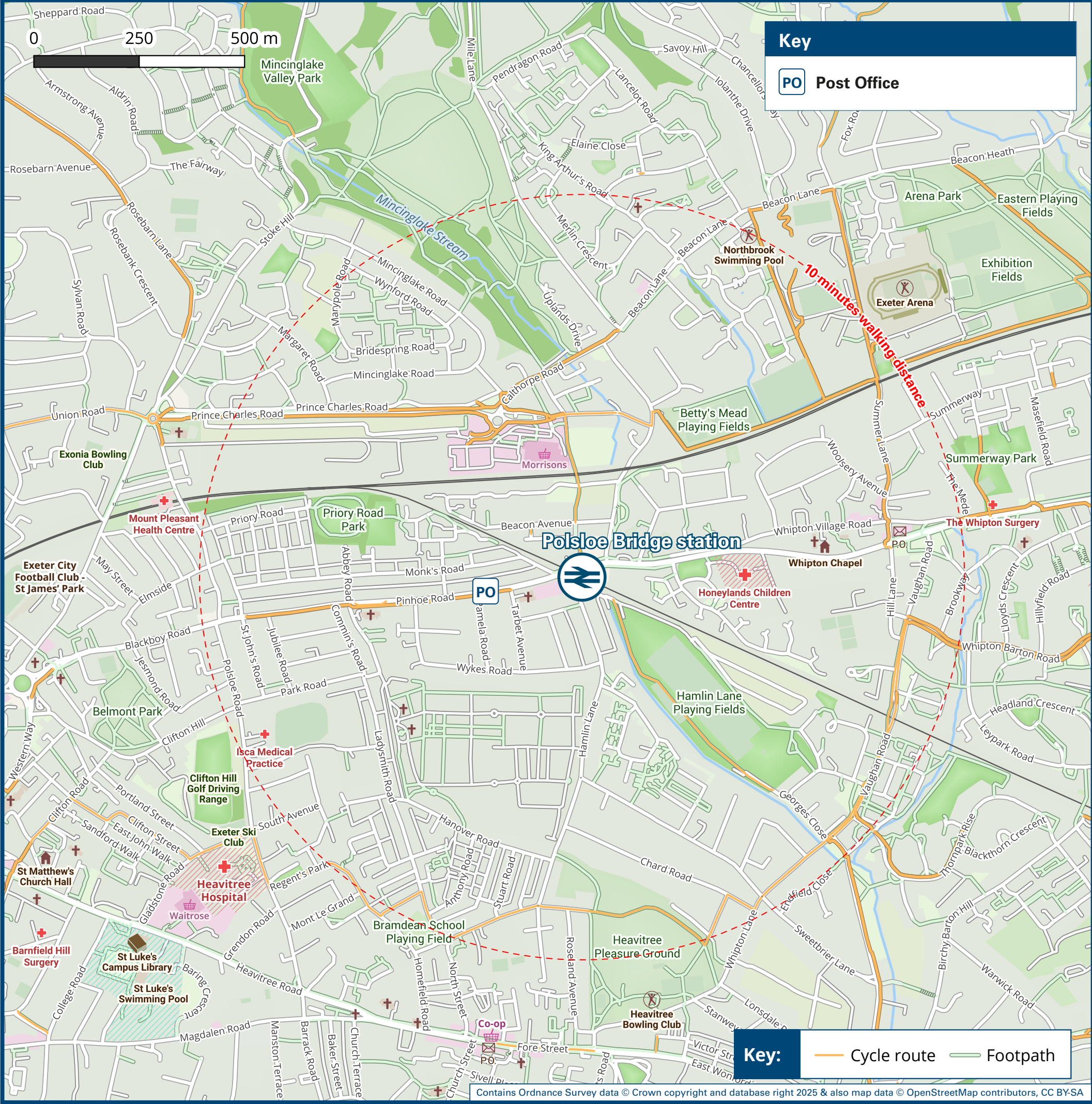
Onward Travel Information

Buses



Rail replacement buses depart from Widgery Road bus stops on Pinhoe Road. Taxis depart from the front of the station.

Local area map



Main destinations by bus

(Data correct at January 2026)



DESTINATION	BUS ROUTES	BUS STOP	DESTINATION	BUS ROUTES	BUS STOP	DESTINATION	BUS ROUTES	BUS STOP
Beare	1, 1A	B	Exminster	B	A	Whipton Hospital	J	B
Bradninch	1A	B	Halberton	1A	B	Whipton (Shops)	1, 1A, B, J	B
Broadclyst	1, 1A	B	Matford	B	A	Willand	1A	B
Budlake	1, 1A	B	Monkerton	B	B			
Cullompton	1, 1A	B	Pinhoe	1, 1A	B			
Digby Retail Park (for Ikea)	J	B	St Leonard's (For County Hall)	I	A			
Exeter City Centre	1, 1A, B, I	A	Tithebarn	B	B			
Exeter Science Park	B	A	Tiverton	1A	B			

Notes

Service 1 operates a services on Mondays to Saturdays, only. No Sunday service.

Services 1A, B, I and J operate daily services.

For bus times and days of operation please contact TraveLine on www.traveline.info or call: 0871 200 22 33

Direct trains operate from this Station to this destination.

Taxis

Polisloe Bridge station has no taxi rank or cab office. Advance booking is essential, please consider using the following local operators: (Inclusion of this number doesn't represent any endorsement of the taxi firm)

Apple Central Taxis
01392 666 666

Epic Taxi Exeter
01392 984 911

Andrew Mills Taxis
01392 253 588

Further information about all onward travel

Local Cycle Info	National Cycle Info	Bus Times	PlusBus
exeter.gov.uk For more information about cycle routes.	walkwheelcycletrust.org.uk	See timetable displays at bus stops. www.traveline.info 0871 200 22 33 calls cost 15p per minute plus your phone company's access charge	 plusbus.info PlusBus is a discount price 'bus pass' that you buy with your train ticket. It gives you unlimited bus travel around your chosen town, on participating buses. Visit www.plusbus.info

National Rail Enquiries

Online	NRE App	Social Media	Alert Me	Contact Centre	PlusBike
nationalrail.co.uk	Free National Rail Enquiries app for iOS and Android	facebook.com/nationalrailenq @nationalrailenq	You can sign up to Alert Me messages on the National Rail Enquiries website where you can receive train and platform notifications directly to your smart phone. nationalrail.co.uk/alertme	03457 48 49 50 Calls cost no more than calls to geographic numbers (01 or 02) and may be recorded.	nationalrail.co.uk/plusbike For more information.



National Rail
Britain's train companies working together



This poster shows details of popular destinations and main, frequent bus routes. Additional services may run, so please check with TraveLine or see posters at local bus stops. Whilst considerable care has been taken to ensure the information contained on this poster is correct and accurate, National Rail cannot accept responsibility for any loss or inconvenience caused by any errors or omissions, or for loss, damage, injury or inconvenience relating to the cancellation, alteration, delay or diversion of a service. For any feedback, please e-mail comments@onwardtravelposters.com

Scan this code with your mobile for full station information.