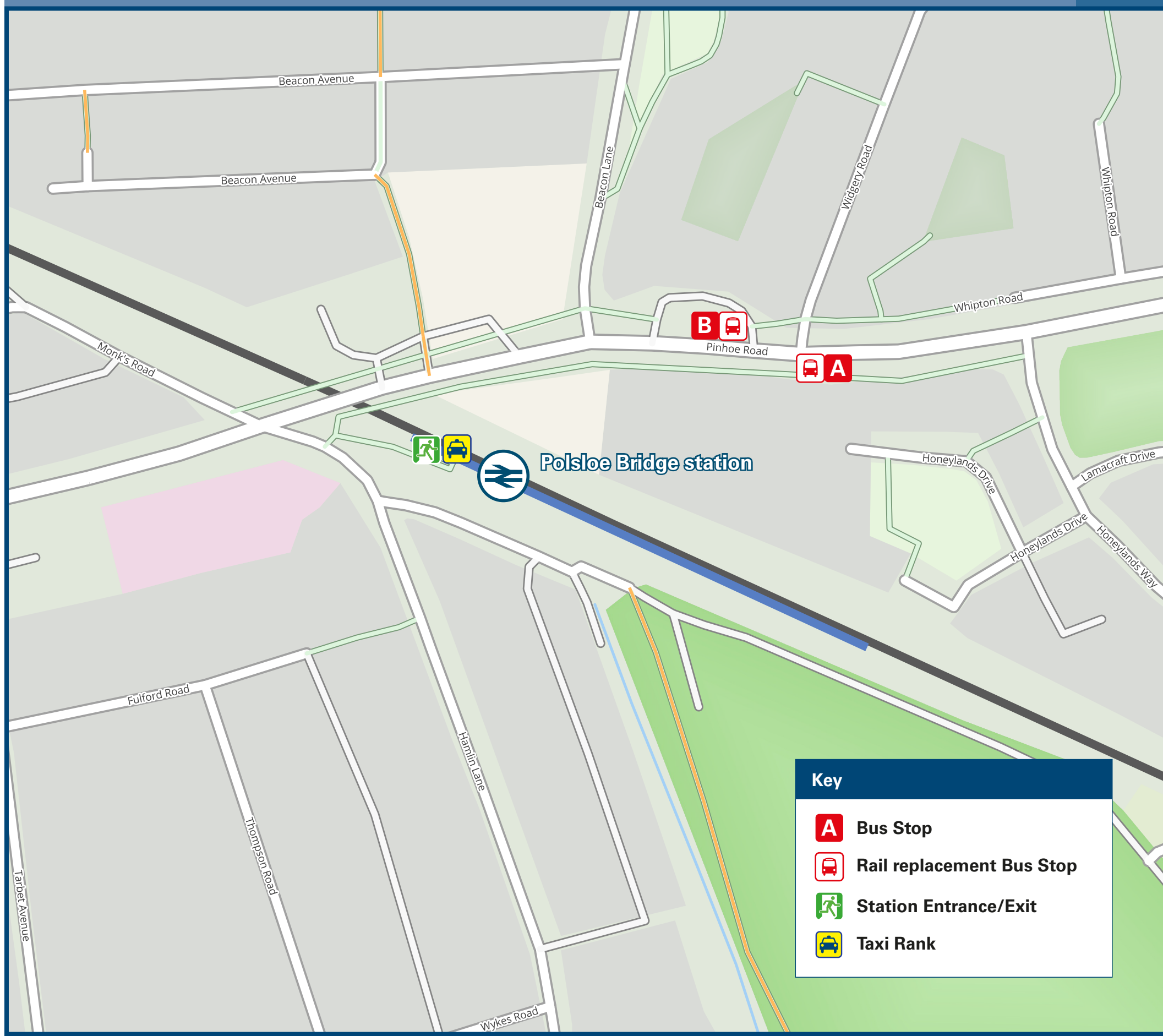




Polsloe Bridge Station

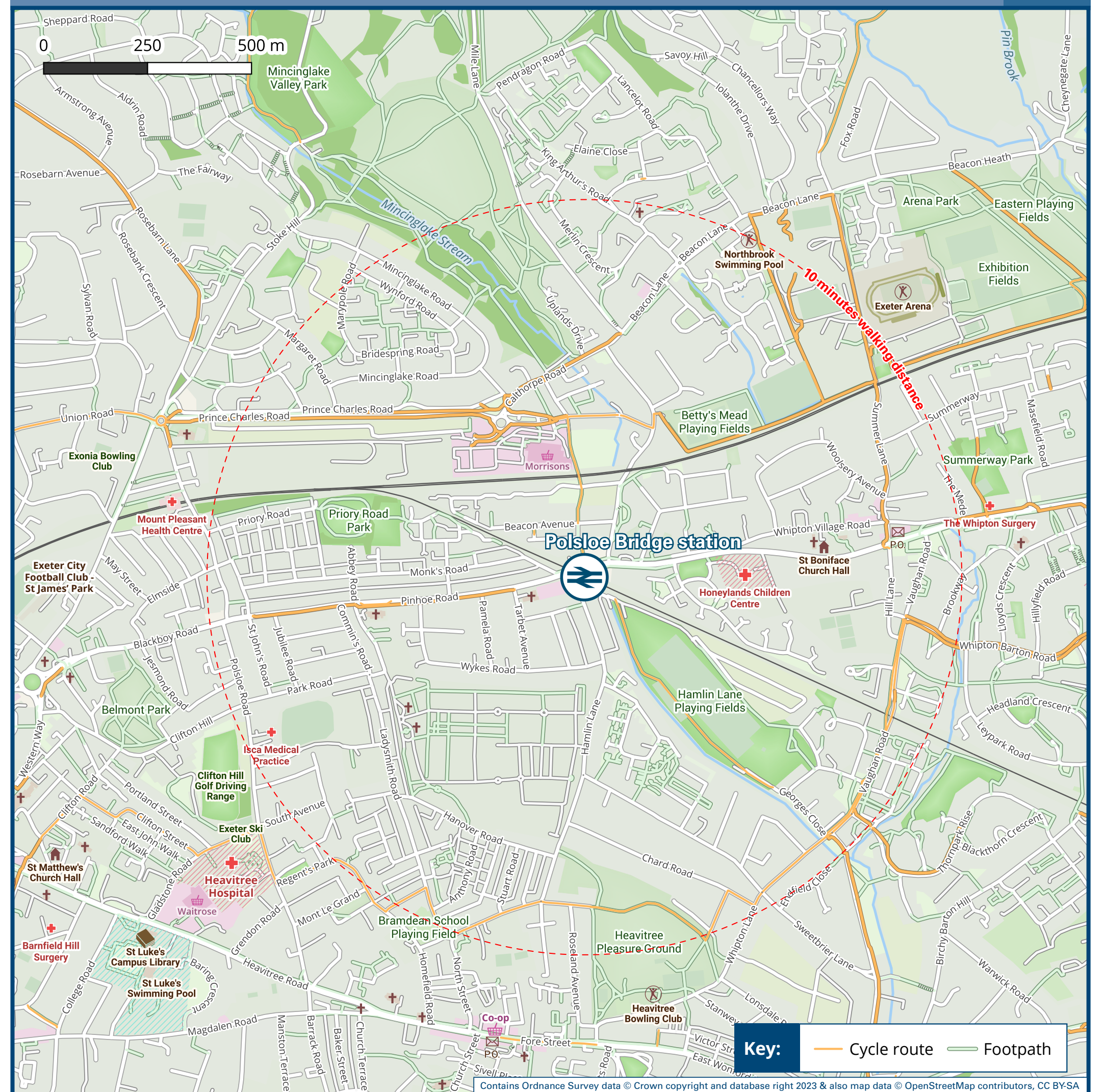
Onward Travel Information

Buses



Rail replacement buses depart from Widgery Road bus stops on Pinhoe Road. Taxis depart from the front of the station.

Local area map



Main destinations by bus

(Data correct at November 2023)



DESTINATION	BUS ROUTES	BUS STOP	DESTINATION	BUS ROUTES	BUS STOP	DESTINATION	BUS ROUTES	BUS STOP
Beare	1	B	Exeter City Centre	1, B, F, I	A	Tiverton	1	B
Bradninch	1	B	Exeter Science Park	B	A	Whipton Hospital	J	B
Broadclyst	1	B	Exminster	B	A	Whipton (Shops)	B, F	B
Budlake	1	B	Halberton	1	B	Willand	1	B
Cullompton	1	B	Matford	B	A			
Digby Retail Park (for Ikea)	J	B	Monkerton	B	B			
Duryard	F	A	Pinhoe	1, RED	B			
Exeter Central Station	F	A	St Leonard's (For County Hall)	I	A			

Notes

Services B & F operate on Mondays to Saturdays, only.
 Services 1, I and J operate daily.
 Direct trains operate from this Station to this destination.

Taxis

Polsloe Bridge station has no taxi rank or cab office. Advance booking is essential, please consider using the following local operators: (Inclusion of this number doesn't represent any endorsement of the taxi firm)

Need a Cab Exeter
01392 555 555

Apple taxis
01392 666 666

Navigo Taxis
01392 341 120

Further information about all onward travel

Local Cycle Info exeter.gov.uk For more information about cycle routes.	National Cycle Info sustrans.org.uk Sustrans is the UK's leading sustainable transport charity.	Bus Times See timetable displays at bus stops. www.traveline.info 0871 200 22 33 0800 000 100 per minute plus your phone company's access charge	NextBuses .mobi Find the bus times for your stop. Search for a bus stop by entering a postcode, street & town or a stop name & town.	PlusBus plusbus.info A discount price "bus pass" that you buy with your train ticket. It gives you unlimited bus travel around your chosen town, on participating buses.
--	--	---	---	---

National Rail Enquiries

Online nationalrail.co.uk	NRE App Free National Rail Enquiries app for iOS and Android	Social Media facebook.com/nationalrailenq @nationalrailenq	Alert Me You can sign up to Alert Me messages on the National Rail Enquiries website where you can receive train and platform notifications directly to your smart phone. nationalrail.co.uk/alertme	Contact Centre 03457 48 49 50 Calls cost no more than calls to geographic numbers (01 or 02) and may be recorded.	PlusBike nationalrail.co.uk/plusbike For more information.
-------------------------------------	--	---	---	--	---



National Rail
Britain's train companies working together



This poster shows details of popular destinations and main, frequent bus routes. Additional services may run, so please check with Traveline or see posters at local bus stops. Whilst considerable care has been taken to ensure the information contained on this poster is correct and accurate, National Rail cannot accept responsibility for any loss or inconvenience caused by any errors or omissions, or for loss, damage, injury or inconvenience relating to the cancellation, alteration, delay or diversion of a service. For any feedback, please e-mail comments@onwardtravelposters.com

Scan this code with your mobile for full station information.