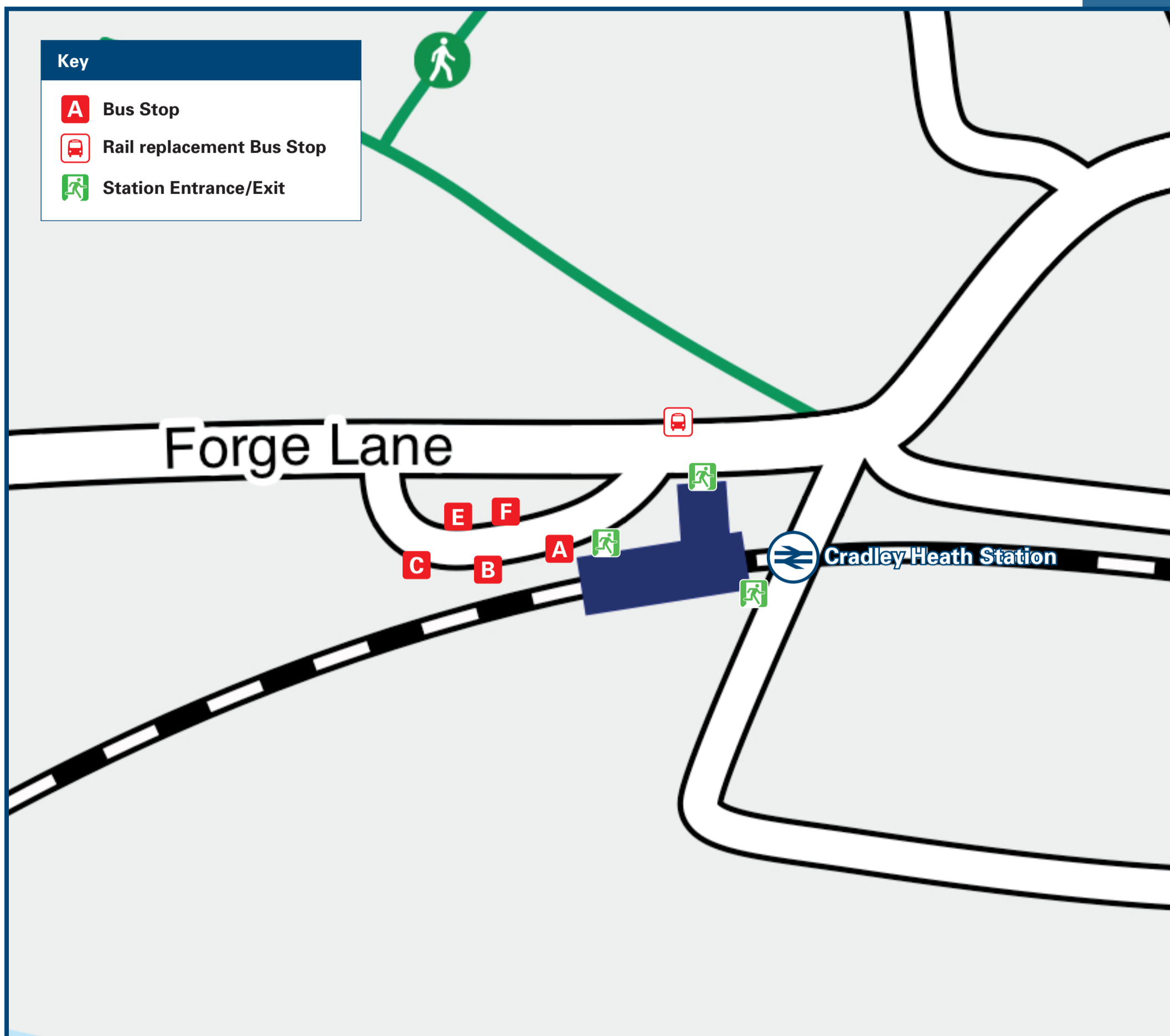




Cradley Heath Station

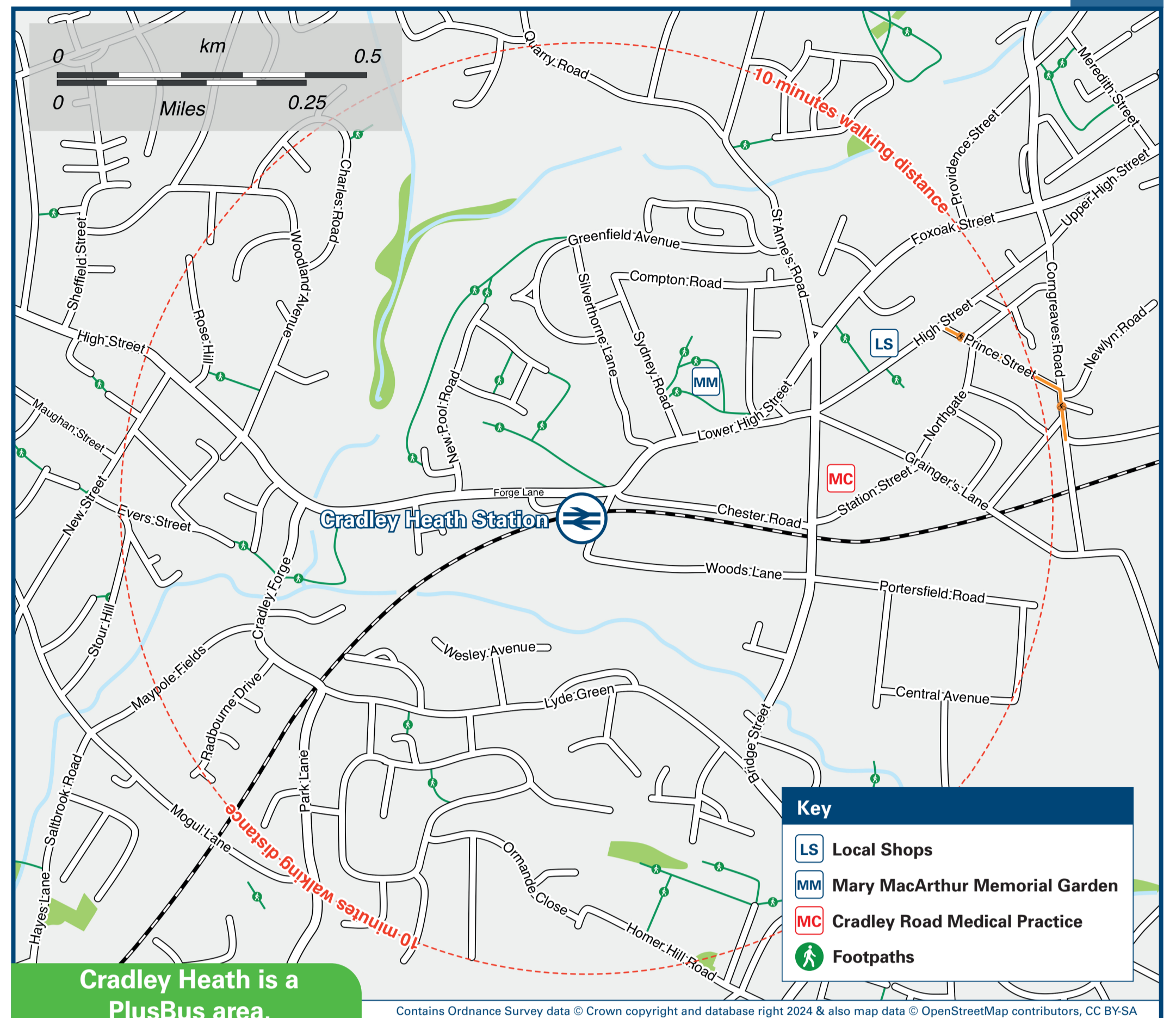
Onward Travel Information

Buses and Taxis



Rail replacement buses/coaches set-down/pick-up on Forge Lane, immediately in front of the station entrance.

Local area map



Cradley Heath is a PlusBus area.



PlusBus is a discount price 'bus pass' that you buy with your train ticket. It gives you unlimited bus travel around your chosen town, on participating buses. Visit www.plusbus.info

Main destinations by bus

(Data correct at July 2024)



DESTINATION	BUS ROUTES	BUS STOP
Baptist End	24	E
Bearwood	X10	F
Birmingham City Centre	X10	F
Blackheath (Town Centre)	4M	F
Blackheath (Waterfall Lane)	14A	E
Brickhouse Farm	24	E
Brierley Hill	X10	A
Burnt Tree	14A	E
Caldmore	4M	F
Darby End	24	E
Dixons Green	24	E
Dudley (Bus Station)	14A, 24	E
Dudley Wood	24	E
Edgbaston (Hagley Road)	X10	F
Five Ways	X10	F
Gornal Wood	X10	A
Grace Mary Estate	14A	E
Haden Hill	X10	F
	14A	E

DESTINATION	BUS ROUTES	BUS STOP
Halesowen	X10	F
Holly Hall	X10	A
Kates Hill	14A, 24	E
	X10	A
Merry Hill (Bus Station)	4M	B
	14A	C
	24	D
Old Hill (Old Hill Cross)	4M, X10	F
	14A, 24	E
Oldbury Interchange	4M	F
Portway	14A	E
	X10	A
Quarry Bank (High Street)	4M	B
	14A	C
	24	D
Quinton	X10	F
Rowley Regis (Church)	14A, 24	E
Rowley Regis Hospital	4M	F
	24	E
Russels Hall Hospital	X10	A
Saltwells	24	E

DESTINATION	BUS ROUTES	BUS STOP
Sandwell & District Hospital	4M	F
Sandwell & Dudley Station	4M	F
Springfield	24	E
Stone Cross	4M	F
Tame Bridge Parkway Station	4M	F
The Knowle (Warrens Hall Park)	24	E
Tividale Hall	14A	E
Uplands Estate	24	E
Walsall (Bradford Place)	4M	F
West Bromwich (Bus Station)	4M	F
Whiteheath Gate	4M	F

Notes

- PlusBus destination, please see below for details. Bus routes 4M and X10 run daily, Mondays to Sundays. Bus routes 14A and 24 run Mondays to Saturdays only. No Sunday services.
- Direct trains operate to this destination from this Station.
- Change here for connecting National Rail services.

Taxis

Cradley Heath Station is served by a taxi rank or a cab office. Check availability before travelling, and pre-book if necessary. Please consider using the following local operators: (Inclusion of this number doesn't represent any endorsement of the taxi firm)

Black Country Cars
01384 411 777

Speedway Taxi
01384 565 656

Kings Cars
01384 411 123

Further information about all onward travel

Local Cycle Info networkwestmidlands.com/cycling For more information about cycle routes.	National Cycle Info sustrans.org.uk Sustrans is the UK's leading sustainable transport charity.	Bus Times See timetable displays at bus stops. www.traveline.info 0871 200 22 33 call cost 13p per minute plus your phone company's access charge	NextBuses Find the bus times for your stop. Search for a bus stop by entering a postcode, street & town or a stop name & town.	PlusBus plusbus.info A discount price 'bus pass' that you buy with your train ticket. It gives you unlimited bus travel around your chosen town, on participating buses.
---	---	--	---	---

National Rail Enquiries

Online nationalrail.co.uk	NRE App Free National Rail Enquiries app for iOS and Android	Social Media facebook.com/nationalrailenq @nationalrailenq	Alert Me You can sign up to Alert Me messages on the National Rail Enquiries website where you can receive train and platform notifications directly to your smart phone. nationalrail.co.uk/alertme	Contact Centre 03457 48 49 50 Calls cost no more than calls to geographic numbers (01 or 02) and may be recorded.	PlusBike nationalrail.co.uk/plusbike For more information.
---	--	---	---	--	--



This poster shows details of popular destinations and main, frequent bus routes. Additional services may run, so please check with Traveline or see posters at local bus stops. Whilst considerable care has been taken to ensure the information contained on this poster is correct and accurate, National Rail cannot accept responsibility for any loss or inconvenience caused by any errors or omissions, or for loss, damage, injury or inconvenience relating to the cancellation, alteration, delay or diversion of a service. For any feedback, please e-mail comments@onwardtravelposters.com

Scan this code with your mobile for full station information.