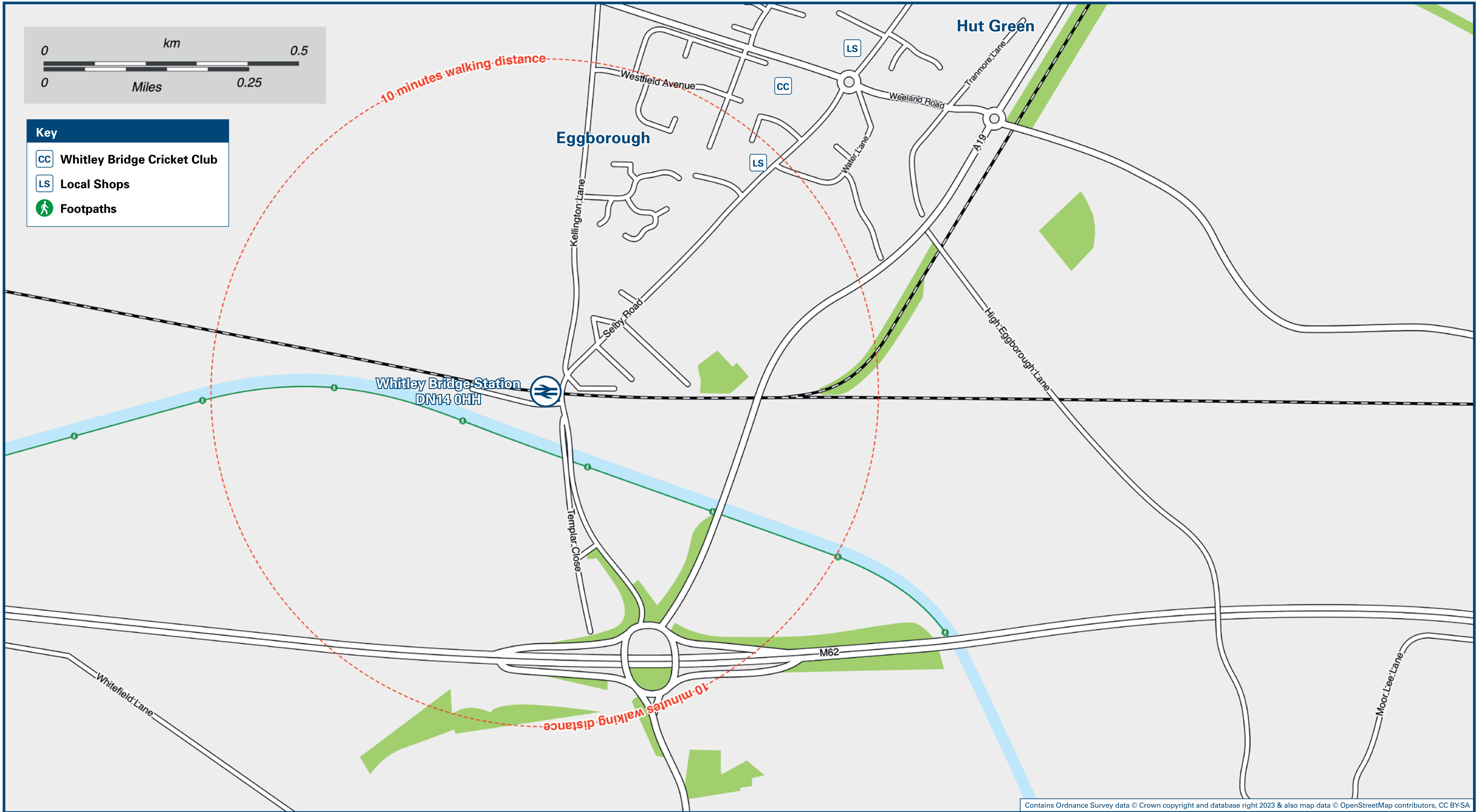




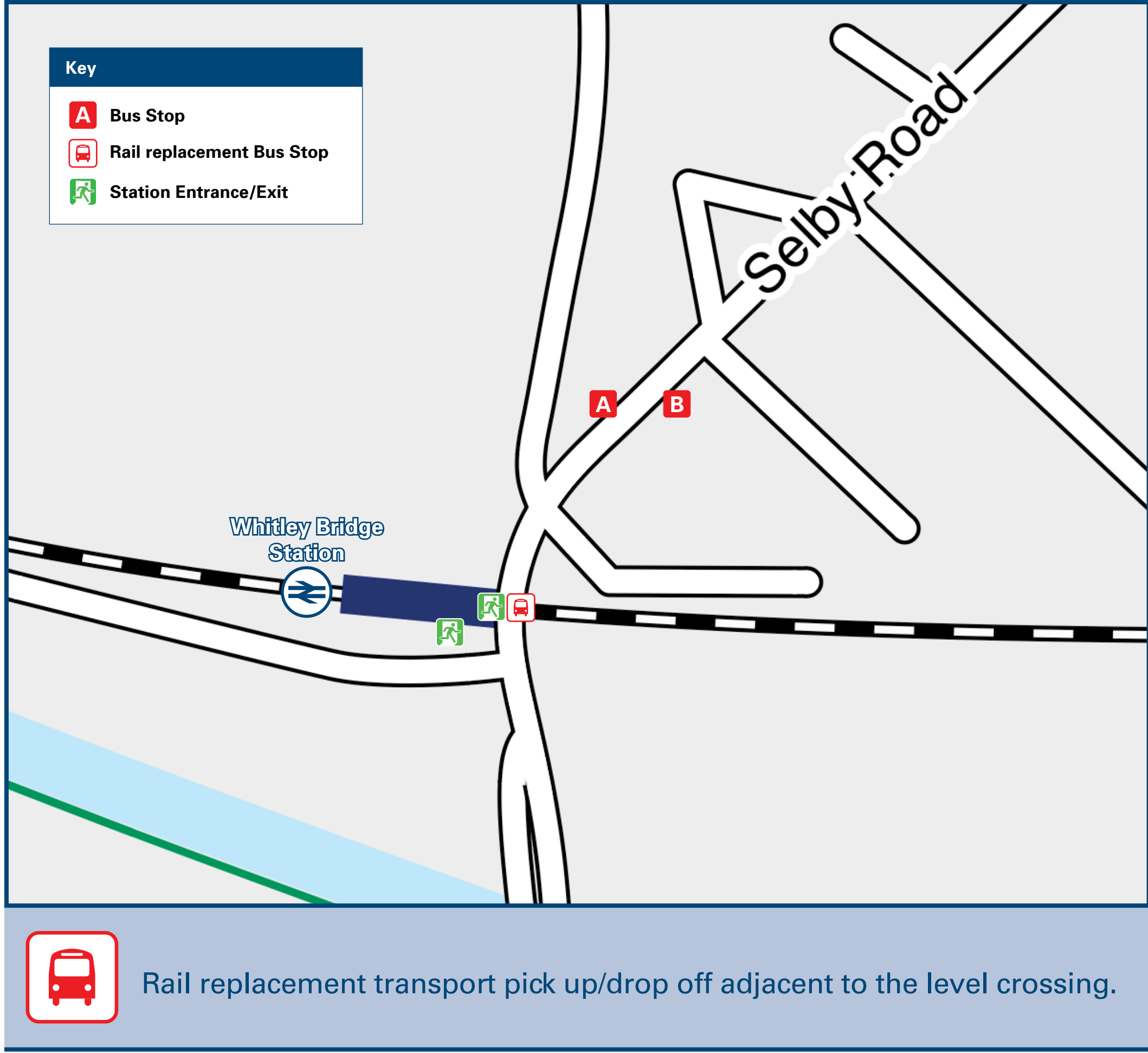
Whitley Bridge Station

Onward Travel Information

Local area map



Buses



Main destinations by bus

DESTINATION	BUS ROUTES	BUS STOP
Beal	476	B
Brayton	476	A
Burn	476	A
Chapel Haddlesey	476	A
Eggborough (Westfield Avenue)	476	B
Ferrybridge	476	B
Hensall	476*	A
Hut Green (Horse & Jockey)	476	A
Kellingley	476	B
Kellington	476	B
Knottingley	476	B
Pontefract	476	B
Selby (Bus Station / Railway Station)	476	A
Selby College	476	A
Selby (New War Memorial Hospital)	476	A
Whitley (George & Dragon)	476	B

Notes

Bus route 476 operates Mondays to Saturdays only. No Sunday services. For bus times please see bus stop timetables or contact Traveline.

Direct trains operate to this destination from this station.

* Limited journeys only serve Hensall station and village.

Taxis

Whitley Bridge Station has no taxi rank or cab office. Advance booking is essential, please consider using the following local operators: (Inclusion of this number doesn't represent any endorsement of the taxi firm)

EJ Private Hire
01977 662 769

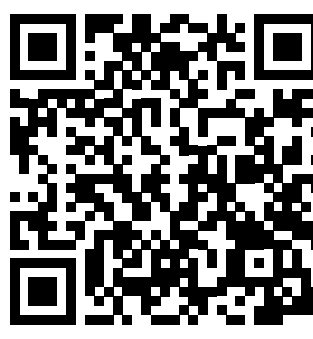
Action Cars
01977 600 700

Further information about all onward travel

Local Cycle Info www.northyorks.gov.uk/roads-parking-and-travel/roads-and-pavements/cycle-lanes-and-routes For more information about cycle routes.	National Cycle Info sustrans.org.uk Sustrans is the UK's leading sustainable transport charity.	Bus Times See timetable displays at bus stops. www.traveline.info 0871 200 22 33 calls cost 15p per minute plus your phone company's access charge	NextBuses Find the bus times for your stop. Search for a bus stop by entering a postcode, street & town or a stop name & town.	PlusBus plusbus.info A discount price 'bus pass' that you buy with your train ticket. It gives you unlimited bus travel around your chosen town, on participating buses.
---	---	---	---	---

National Rail Enquiries

Online nationalrail.co.uk	NRE App Free National Rail Enquiries app for iOS and Android	Social Media facebook.com/nationalrailenq @nationalrailenq	Alert Me You can sign up to Alert Me messages on the National Rail Enquiries website where you can receive train and platform notifications directly to your smart phone. nationalrail.co.uk/alertme	Contact Centre 03457 48 49 50 Calls cost no more than calls to geographic numbers (01 or 02) and may be recorded.	PlusBike nationalrail.co.uk/plusbike For more information.
---	--	---	---	--	--



This poster shows details of popular destinations and main, frequent bus routes. Additional services may run, so please check with Traveline or see posters at local bus stops. Whilst considerable care has been taken to ensure the information contained on this poster is correct and accurate, National Rail cannot accept responsibility for any loss or inconvenience caused by any errors or omissions, or for loss, damage, injury or inconvenience relating to the cancellation, alteration, delay or diversion of a service. For any feedback, please e-mail comments@onwardtravelposters.com

Scan this code with your mobile for full station information.