



# Lye (West Midlands) Station

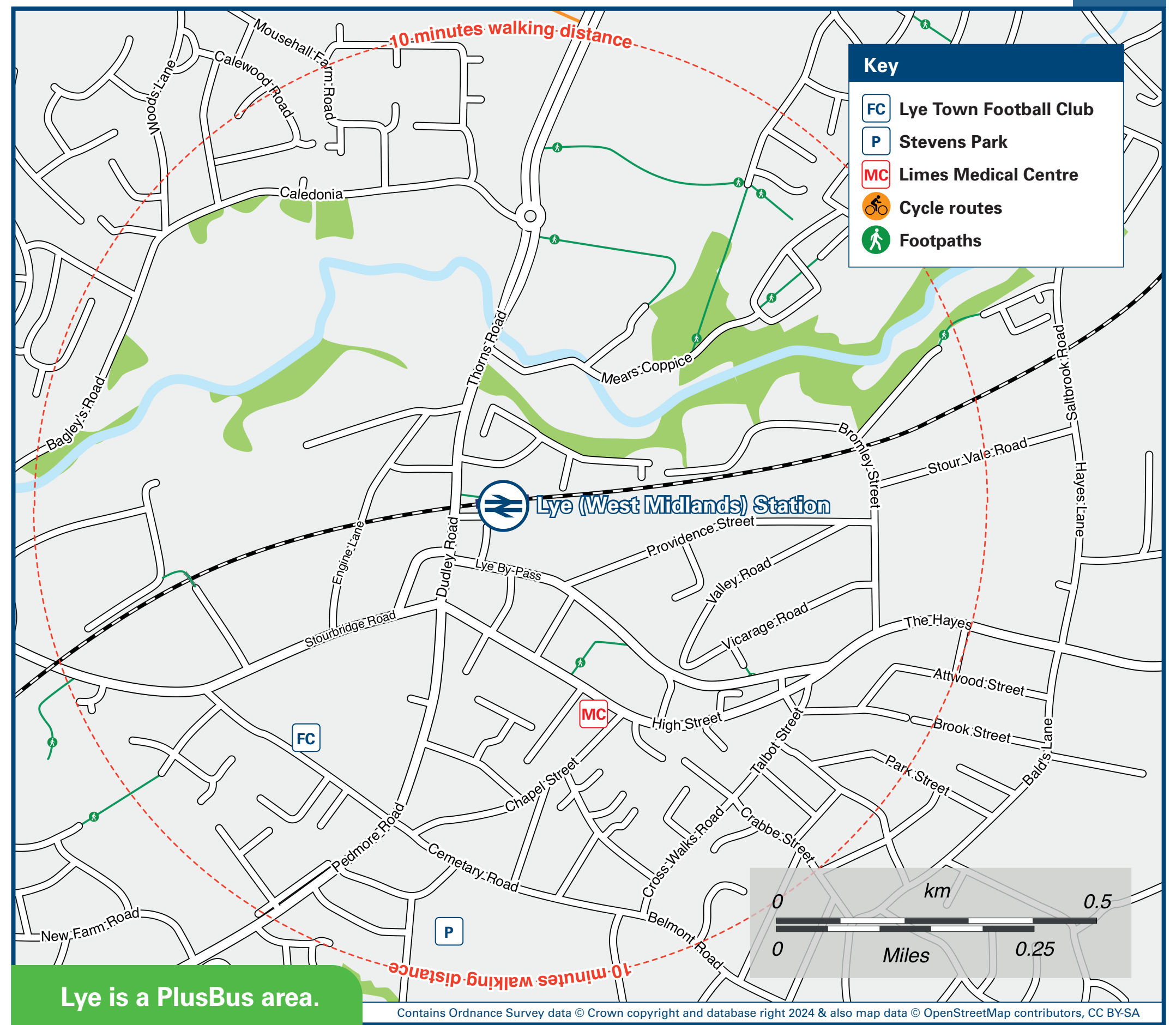
## Onward Travel Information

### Buses



Rail replacement buses/coaches will pick-up/set-down on the Dudley Road, immediately at the top of the Station Drive.

### Local area map



Lye is a PlusBus area.



PlusBus is a discount price 'bus pass' that you buy with your train ticket. It gives you unlimited bus travel around your chosen town, on participating buses. Visit [www.plusbus.info](http://www.plusbus.info)

### Main destinations by bus

(Data correct at July 2024)

DESTINATION	BUS ROUTES	BUS STOP	DESTINATION	BUS ROUTES	BUS STOP	DESTINATION	BUS ROUTES	BUS STOP
Baptist End	7	L D	Lapal	9	L A	Short Cross	9	L A
Bearwood (Interchange)	9	L A	Merry Hill	7	L D	Stourbridge	7	A
Colley Gate	9	L A	National Indoor Arena	9	L A	Wollaston	9	L C
Darby End	7	L D	Norton	7	A	Wollescote	7	A
Dixons Green	7	L D	Oldswinford	7	A	Wynall	7	A
Dudley	7	L D	Pedmore	7	A		7	A
Five Ways	9	L A	Quarry Bank	7	L D		9	L A
Halesowen	9	L A	Quinton	9	L A			
High Park	7	A	Saltwells	7	L D			

**Notes**

- PlusBus destination, please see below for details. Bus routes 7 and 9 run daily services.
- Direct train service operates to this destination from this Station.

### Taxis

Lye Station has no taxi rank or cab office. Advance booking is essential, please consider using the following local operators: (Inclusion of this number doesn't represent any endorsement of the taxi firm)

**Skyline Taxis**  
01384 480 480

**Elite Taxis**  
01384 424 444

**Central Taxis**  
01562 956 789

### Further information about all onward travel

<b>Local Cycle Info</b> <a href="http://www.tfwm.org.uk/plan-your-journey/ways-to-travel/cycling-and-walking">www.tfwm.org.uk/plan-your-journey/ways-to-travel/cycling-and-walking</a> For more information about cycle routes.	<b>National Cycle Info</b> <a href="http://sustrans.org.uk">sustrans.org.uk</a> Sustrans is the UK's leading sustainable transport charity.	<b>Bus Times</b> See timetable displays at bus stops.  <a href="http://www.traveline.info">www.traveline.info</a> 0871 200 22 33 call cost 13p per minute plus your phone company's access charge	<b>NextBuses</b>  <b>Find the bus times for your stop.</b> Search for a bus stop by entering a postcode, street & town or a stop name & town.	<b>PlusBus</b> <a href="http://plusbus.info">plusbus.info</a> A discount price 'bus pass' that you buy with your train ticket. It gives you unlimited bus travel around your chosen town, on participating buses.
---	---	--	--	---

### National Rail Enquiries

<b>Online</b> <a href="http://nationalrail.co.uk">nationalrail.co.uk</a>	<b>NRE App</b> Free National Rail Enquiries app for iOS and Android	<b>Social Media</b> <a href="https://facebook.com/nationalrailenq">facebook.com/nationalrailenq</a> @nationalrailenq	<b>Alert Me</b> You can sign up to Alert Me messages on the National Rail Enquiries website where you can receive train and platform notifications directly to your smart phone. <a href="http://nationalrail.co.uk/alertme">nationalrail.co.uk/alertme</a>	<b>Contact Centre</b> 03457 48 49 50 Calls cost no more than calls to geographic numbers (01 or 02) and may be recorded.	<b>PlusBike</b> <a href="http://nationalrail.co.uk/plusbike">nationalrail.co.uk/plusbike</a> For more information.
---	--	--	---	--	--



This poster shows details of popular destinations and main, frequent bus routes. Additional services may run, so please check with Traveline or see posters at local bus stops. Whilst considerable care has been taken to ensure the information contained on this poster is correct and accurate, National Rail cannot accept responsibility for any loss or inconvenience caused by any errors or omissions, or for loss, damage, injury or inconvenience relating to the cancellation, alteration, delay or diversion of a service. For any feedback, please e-mail [comments@onwardtravelposters.com](mailto:comments@onwardtravelposters.com)

Scan this code with your mobile for full station information.