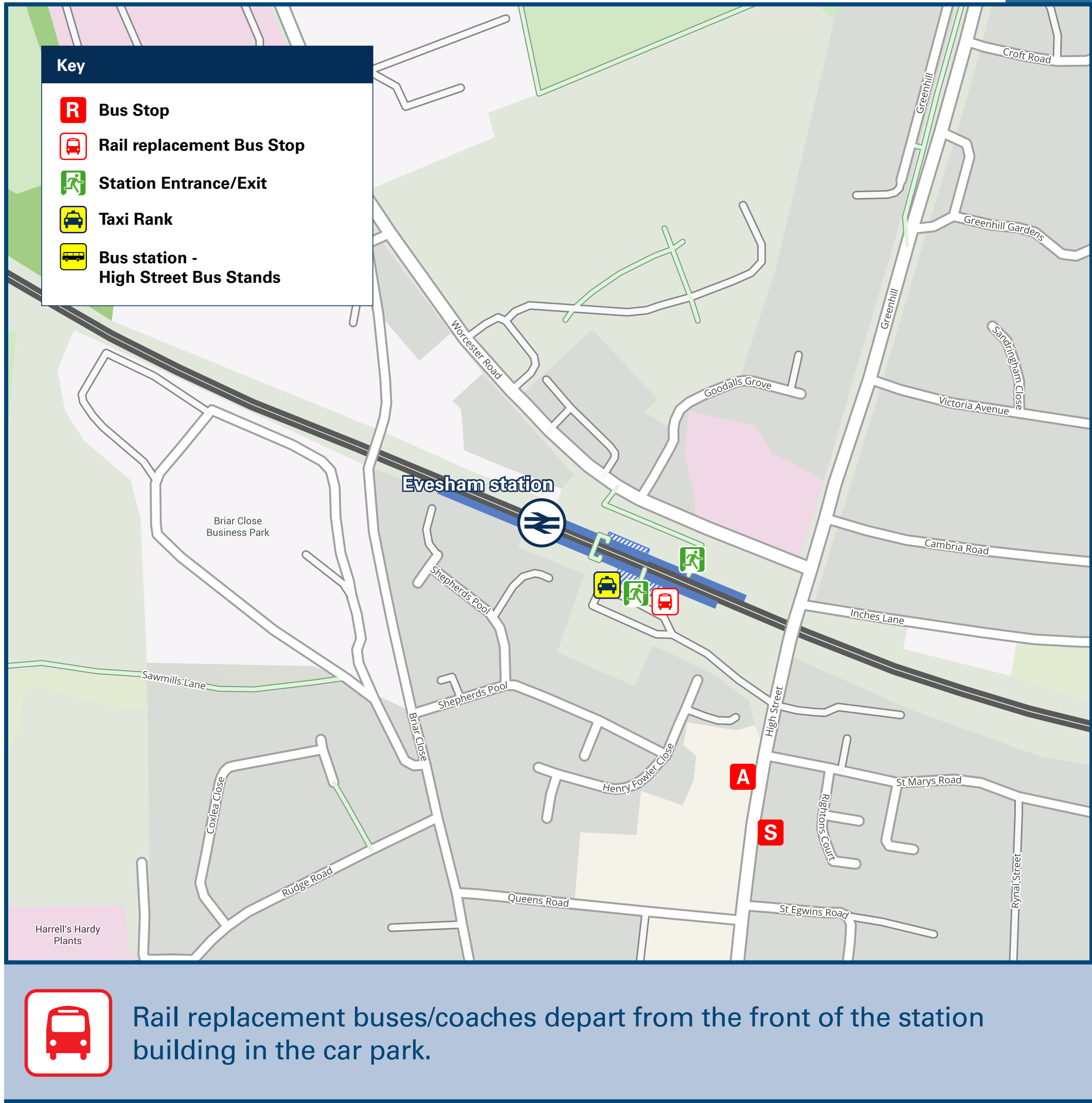




Evesham Station

Onward Travel Information

Buses and Taxis



Local area map



Main destinations by bus



DESTINATION	BUS ROUTES	BUS STOP
Alcester	247#	A
Ashton-under-Hill	540	S** , Bus Station Stand B B
Badsey	247#	S
	553#	Bus Station Stand B B
Beckford	540	S** , Bus Station Stand B B
Bengeworth (Evesham)	247#, 582*, R4*	S
	552#, 553#	Bus Station Stand B B
Bidford-on-Avon	28, 247#	A
Bredon	540	S** , Bus Station Stand B B
Bretforton	553#	Bus Station Stand B B
Broadway	R4*	S
Cleeve Prior	247#	S
Crophorne	28(Sundays only)	S
	X50	Bus Station Stand B A
Drakes Broughton	X50	Bus Station Stand B A
Evesham Bus Station, High Street & Town Centre	28, 247#, 540, 582*, R4*	S
Evesham College (Cheltenham Road)	28	S
	540	S** , Bus Station Stand B B
Evesham Community Hospital (Waterside)	247#, R4*	S
	552#, 553#	Bus Station Stand B B
Evesham (Fairfield Road)	582*	S
	28, 247#	S
Evesham (Four Pools / Davies Road)	540	S** , Bus Station Stand B B

DESTINATION	BUS ROUTES	BUS STOP
	28, 582*	S
	540	S** , Bus Station Stand B B
Evesham Leisure Centre	552#, 553#	Bus Station Stand B B
	X50	Bus Station Stand B A
Evesham (Local area villages)	~	
Evesham New College	28	S
Evesham Vale Light Railway (Twyford)	R4*	A
Greenhill (Evesham)	28, 247#, R4*	A
	28, 582*	S
Hampton (Evesham)	X50	Bus Station Stand B A
Harvington	28	A
Hinton Cross	540	S** , Bus Station Stand B B
Honeybourne	553#	Bus Station Stand B B
Iron Cross	28	A
Kemerton	540	S** , Bus Station Stand B B
Long Lartin Prison	552#	Bus Station Stand B B
Norton	28	A
Offenham	552#	Bus Station Stand B B
	28(Sundays only)	S
Pershore (Town Centre)	X50	Bus Station Stand B A
Redditch	247#	A
Salford Priors	28, 247#	A
Sedgeberrow	540	S** , Bus Station Stand B B

DESTINATION	BUS ROUTES	BUS STOP
South Littleton	247#	S
	552#	Bus Station Stand B B
Stratford-upon-Avon	28	A
Tewkesbury	540	S** , Bus Station Stand B B
Twyford (The Valley Shopping Centre)	R4*	A
Wick (Main Road)	X50	Bus Station Stand B A
Wickhamford	R4*	S
Willesley	R4*	S
Wixford	247#	A
Worcester City Centre	X50	Bus Station Stand B A
Worcestershire Parkway Station	X50	Bus Station Stand B A

Notes

Bus route 28 operates daily.
Bus routes 540 and X50 operate Mondays to Saturdays.
For bus times please see bus stop timetables or contact Traveline www.traveline.info (or call: 0871 200 22 33)

Direct trains operate from this station to this destination.

It's a 10 to 15 minutes walk from this station to Evesham town centre and High Street bus station, see maps.

* Bus routes 582 and R4 operate limited daytime services on Mondays to Fridays, only.

Bus routes 247, 552 & 553 operate limited daytime services on Mondays to Saturdays, only.

~ Additional limited bus services operate from Evesham Bus Station to local villages. Please consult timetables at Bus Station stands.

** Bus route 540 operates peak morning and evening services from stop **S**, and from Bus Station stand **B B** during the day.

Taxis

Evesham station is served by a taxi rank or cab office. Check availability before travelling, and pre-book if necessary. Please consider using the following local operators: (Inclusion of this number doesn't represent any endorsement of the taxi firm)

1st Call Taxis
07766 218 218

K.L.A Taxis
01386 362 007

Emerald Taxis
01386 761 705

Further information about all onward travel

Local Cycle Info	National Cycle Info	Bus Times	NextBuses	PlusBus
worcestershires.gov.uk For more information about cycle routes.	sustrans.org.uk Sustrans is the UK's leading sustainable transport charity.	See timetable displays at bus stops. www.traveline.info 0871 200 22 33 calls cost 10p per minute plus your phone company's access charge	Find the bus times for your stop. Search for a bus stop by entering a postcode, street & town or a stop name & town.	plusbus.info A discount price 'bus pass' that you buy with your train ticket. It gives you unlimited bus travel around your chosen town, on participating buses.

National Rail Enquiries

Online	NRE App	Social Media	Alert Me	Contact Centre	PlusBike
nationalrail.co.uk	Free National Rail Enquiries app for iOS and Android	facebook.com/nationalrailenq @nationalrailenq	You can sign up to Alert Me messages on the National Rail Enquiries website where you can receive train and platform notifications directly to your smart phone. nationalrail.co.uk/alertme	03457 48 49 50 Calls cost no more than calls to geographic numbers (01 or 02) and may be recorded.	nationalrail.co.uk/plusbike For more information.



National Rail
Britain's train companies working together

