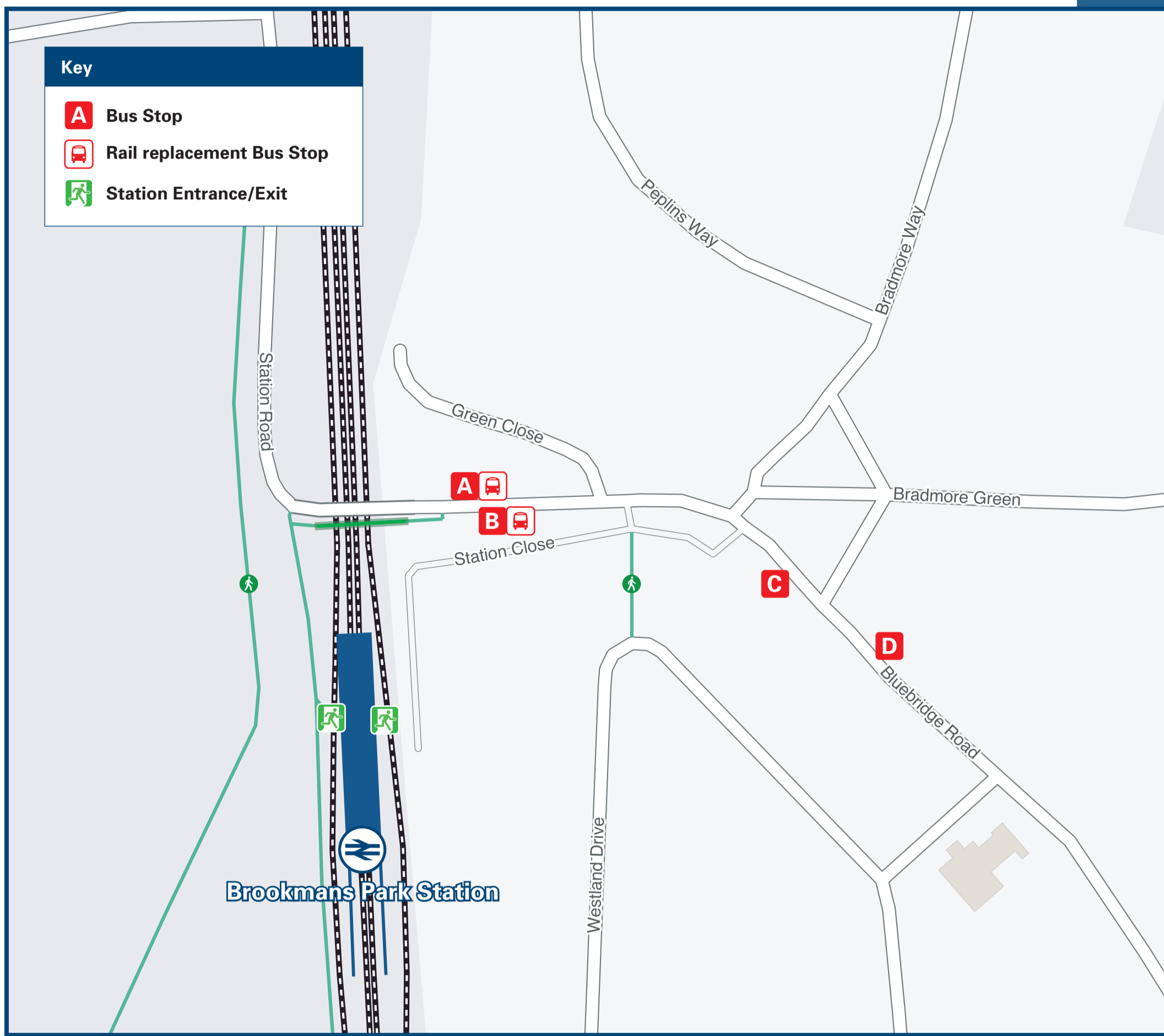




Brookmans Park Station

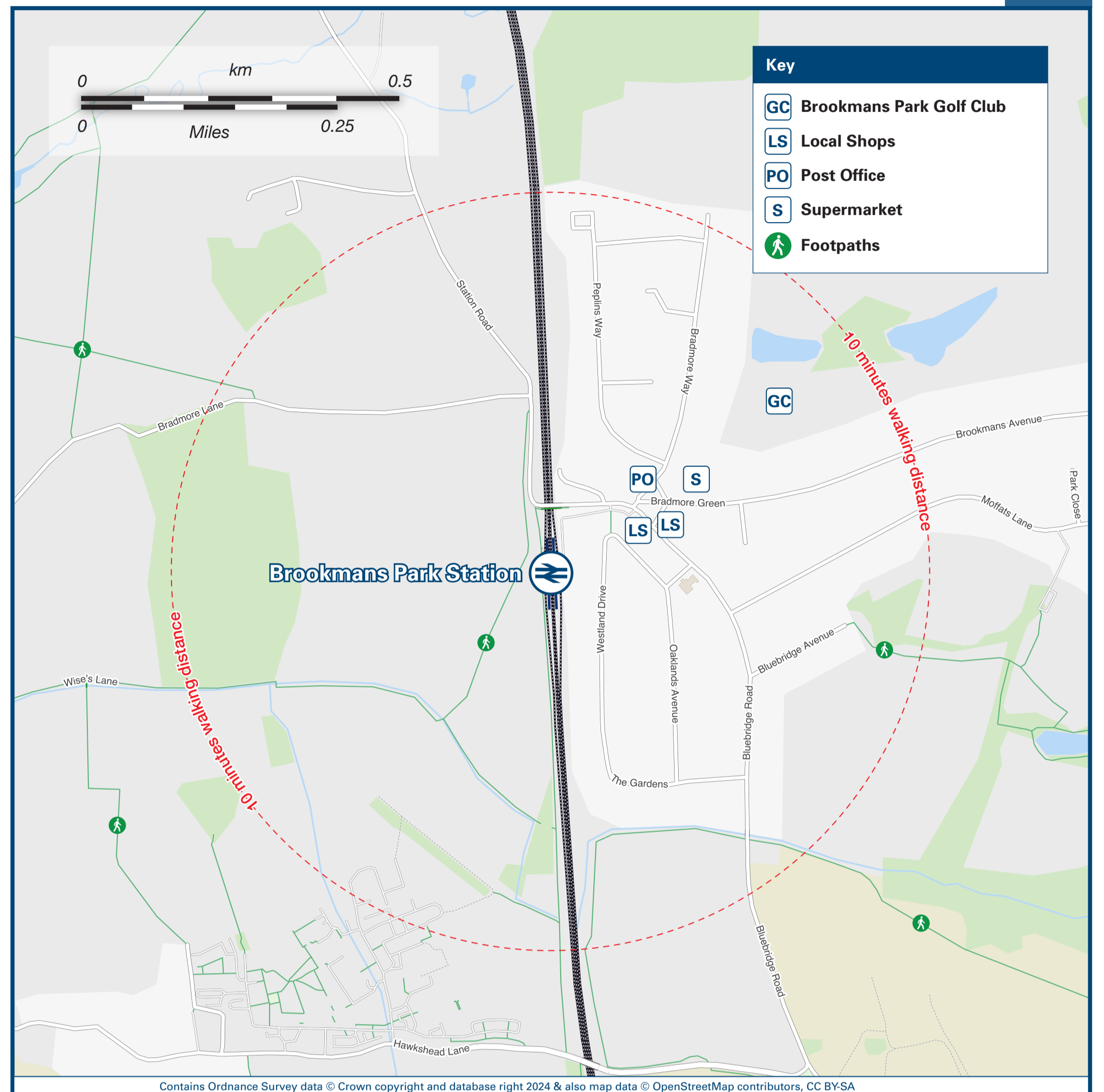
Onward Travel Information

Buses



Rail replacement bus stops for buses towards Potters Bar and London (stop A), and buses towards Welwyn Garden City and Stevenage (stop B) are located on Station Road.

Local area map



Main destinations by bus

(Data correct at May 2024)



DESTINATION	BUS ROUTES	BUS STOP
Batford	610	B, C
Cheshunt	242*	A, D
Cockfosters Station	610	A, D
Cuffley (serves Cuffley Station)	242*	A, D
Harpenden (serves Harpenden Station)	610	B, C
Hatfield Business Park	610	B, C
Hatfield (Town Centre & The Galleria)	610	B, C
Hatfield (University of Hertfordshire)	610#	B, C

DESTINATION	BUS ROUTES	BUS STOP
Little Heath	242*, 610	A, D
Luton (serves Luton Station)	610	B, C
Marshall's Heath	610	B, C
Marshmoor	610	B, C
Northaw	242*	A, D
Oxlease	610	B, C
Potters Bar	242*, 610	A, D
South Hatfield	610	B, C

DESTINATION	BUS ROUTES	BUS STOP
Swanley Bar	242*, 610	A, D
Waltham Cross	242*	A, D
Welham Green	242*, 610	B, C
Wheathampstead	610	B, C

Notes

Bus route 610 runs Mondays to Saturdays services, only. No Sunday services.

For all bus times and days of operation please see bus stop timetables or contact Traveline.

Direct trains operate to this destination from this station.

Change here for connecting National Rail services.

Change here for connecting London Underground services.

Bus route 610 serves both The Forum (College Lane) and de Havilland campuses.

* Bus route 242 runs a Sundays & Bank Holidays service, only.

Taxis

Brookmans Park Station has no taxi rank or cab office. Advance booking is essential, please consider using the following local operators: (Inclusion of this number doesn't represent any endorsement of the taxi firm)

Brookmans Park Taxis
07742 147 561

Manor Cars
01707 655 655

AAA Taxis
01707 888 777

Further information about all onward travel

Local Cycle Info welhat.gov.uk <small>For more information about cycle routes.</small>	National Cycle Info sustrans.org.uk <small>Sustrans is the UK's leading sustainable transport charity.</small>	Bus Times <small>See timetable displays at bus stops.</small> www.traveline.info 0871 200 22 33 <small>calls cost 13p per minute plus your phone company's access charge</small>	NextBuses Find the bus times for your stop. <small>Search for a bus stop by entering a postcode, street & town or a stop name & town.</small>	PlusBus plusbus.info <small>A discount price 'bus pass' that you buy with your train ticket. It gives you unlimited bus travel around your chosen town, on participating buses.</small>
--	--	--	---	---

National Rail Enquiries

Online nationalrail.co.uk	NRE App Free National Rail Enquiries app for iOS and Android	Social Media facebook.com/nationalrailenq @nationalrailenq	Alert Me <small>You can sign up to Alert Me messages on the National Rail Enquiries website where you can receive train and platform notifications directly to your smart phone.</small> nationalrail.co.uk/alertme	Contact Centre 03457 48 49 50 <small>Calls cost no more than calls to geographic numbers (01 or 02) and may be recorded.</small>	PlusBike nationalrail.co.uk/plusbike <small>For more information.</small>
---	---	--	--	--	---

Great Northern



National Rail
Britain's train companies working together

