



Whitby Station

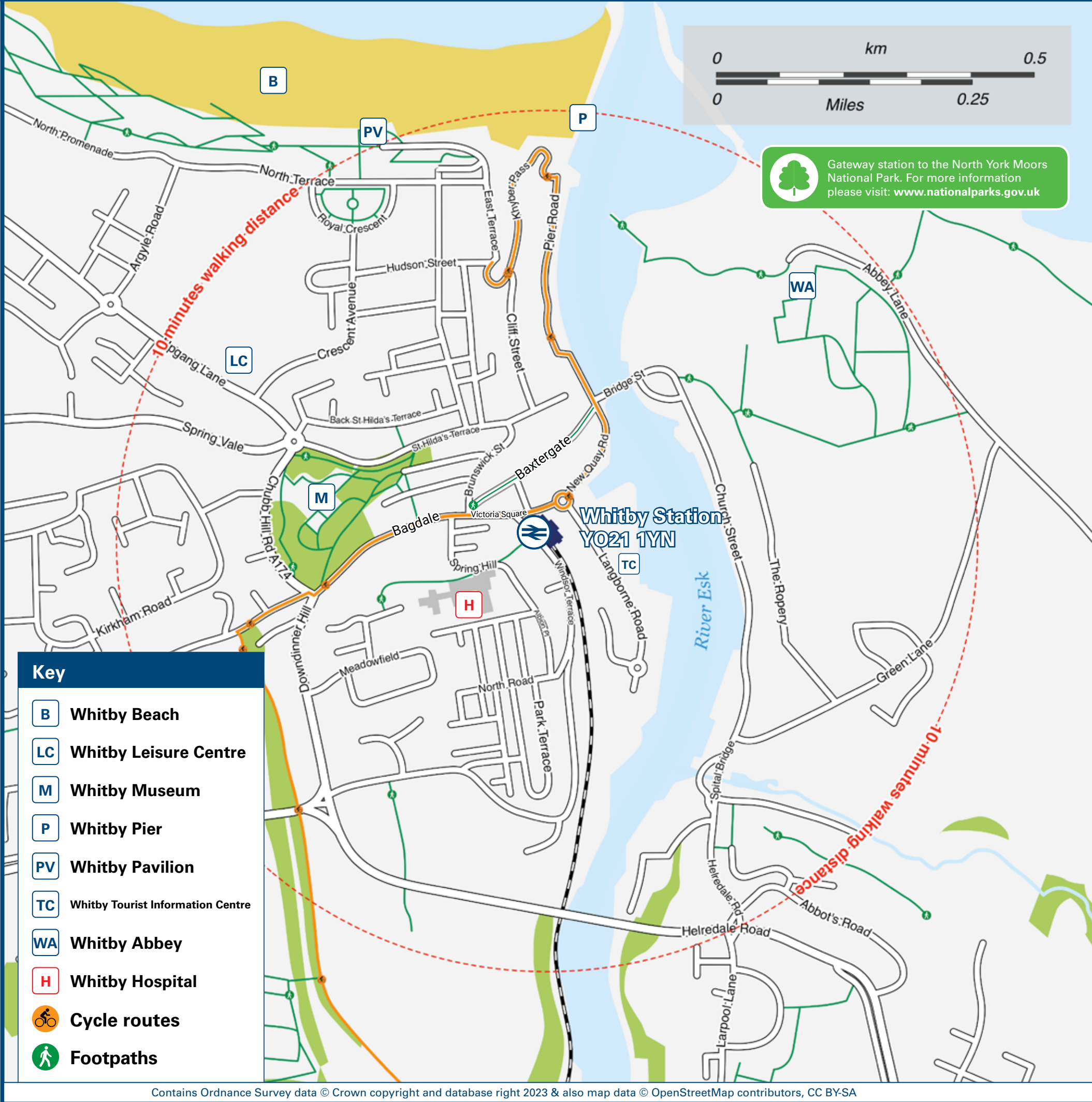
Onward Travel Information

Buses and Taxis



Rail replacement buses depart from Langbourne Road, running adjacent to the station.

Local area map



Main destinations by bus

(Data correct at November 2023)



DESTINATION	BUS ROUTES	BUS STOP
Aislaby	X93, X94+	1
Cloughton	X93, X94+	2
Easington	X4, X4A*	1
Egton Bridge (for Egton Station)	96	4
Egton Village	96	4
Eskdale Estate	96	4
Flask Inn (Flyingdales)	X93, X94+	2
Fylingthorpe	X93, X94+	2
Glaisdale (Village & Station)	96	4
Goathland	840	3
Grosmont Station	96	4
Guisborough	X93, X94+	1
Hawsker	X93, X94+	2
High Stakesby	X4, X4A*, X93, X94+	1
	840	3
Hole of Horcum	95	4
	840	3
Kirby Misperton (for Flamingo Land)	840	3
Lealholme	96	4
Lockton (for Levisham)	840	3
Loftus	X4, X4A*	1
Low Stakesby (Park & Ride)	P1, P2	3

DESTINATION	BUS ROUTES	BUS STOP
Lythe	X4, X4A*	1
Malton (Bus Station, near Railway Station)	840	3
Middlesbrough	X4, X4A*, X93, X94+	1
Pickering	840	3
Redcar	X4, X4A*	1
Robin Hood's Bay	X93, X94+	2
Runswick Bay	X4, X4A*	1
Ruswarp	95	4
	840	3
Saltburn	X4, X4A*	1
Sandsend	X4, X4A*	1
Scaling Dam	X93, X94+	1
Scarborough Station	X93, X94+	2
Sleights	840	3
	95, 96	4
Staithes	X4, X4A*	1
Thornton-le-Dale	840	3
Whitby (Sea Front / Beach)	15 minutes walk from this station (see maps)	
	1 (Tour Bus)+	A
Whitby (Stainsacre Lane)	95	4
	X93, X94+	2
Whitby (West Cliff / Upgang Lane)	X4, X4A*	1

DESTINATION	BUS ROUTES	BUS STOP
Whitby (West Cliff / North Terrace)	1 (Tour Bus)+	A
Whitby Abbey	15 minutes walk from this station (see maps)	
York (City Centre & Railway Station)	1 (Tour Bus)+	A
	840	3

Notes

For more information about Esk Valley rail services between Whitby and Middlesbrough please visit www.eskvalleyrailway.co.uk

Bus routes 95 and 96 operate Mondays to Saturdays only. No services on Sundays or Bank Holidays.

Bus routes 840, P1/P2(Park & Ride), X4, X4A and X93 operate daily throughout the year.

For bus times please see bus timetables at the Bus Station or contact Traveline on 0871 200 22 33.

Direct trains operate to this destination from this station.

North Yorkshire Moors Railway operates a regular steam railway service to Grosmont, Goathland, Newtondale Halt, Levisham and Pickering from late March to October. Telephone 01751 472508 or e-mail: info@nymr.co.uk for times and booking information.

* Bus route X4A operates evenings daily.

+ Bus routes 1 (Tour Bus) and X94 operate daily from the start of Easter to the finishing in October only.

Dogs Travel Free on the Esk Valley Line.

Taxis

Whitby station is served by a taxi rank or cab office. Check availability before travelling, and pre-book if necessary. Please consider using the following local operators: (Inclusion of this number doesn't represent any endorsement of the taxi firm)

Jim's Taxis Whitby
07490 007 007

Streamline Taxis
01947 603 306

White Rose Taxis
01947 604 604

Further information about all onward travel

Local Cycle Info	National Cycle Info	Bus Times	NextBuses	PlusBus
www.northyorks.gov.uk/roads-parking-and-travel/roads-and-pavements/cycle-lanes-and-routes For more information about cycle routes.	sustrans.org.uk Sustrans is the UK's leading sustainable transport charity.	See timetable displays at bus stops. www.traveline.info 0871 200 22 33 call cost 15p per minute plus your phone company's access charge	Find the bus times for your stop. Search for a bus stop by entering a postcode, street & town or a stop name & town. Download on the App Store	plusbus.info A discount price 'bus pass' that you buy with your train ticket. It gives you unlimited bus travel around your chosen town, on participating buses.

National Rail Enquiries

Online	NRE App	Social Media	Alert Me	Contact Centre	PlusBike
nationalrail.co.uk	Free National Rail Enquiries app for iOS and Android	facebook.com/nationalrailenq @nationalrailenq	You can sign up to Alert Me messages on the National Rail Enquiries website where you can receive train and platform notifications directly to your smart phone. nationalrail.co.uk/alertme	03457 48 49 50 Calls cost no more than calls to geographic numbers (01 or 02) and may be recorded.	nationalrail.co.uk/plusbike For more information.



eskvalleyrailway.co.uk



NORTHERN



National Rail
Britain's train companies working together



This poster shows details of popular destinations and main, frequent bus routes. Additional services may run, so please check with Traveline or see posters at local bus stops. Whilst considerable care has been taken to ensure the information contained on this poster is correct and accurate, National Rail cannot accept responsibility for any loss or inconvenience caused by any errors or omissions, or for loss, damage, injury or inconvenience relating to the cancellation, alteration, delay or diversion of a service. For any feedback, please e-mail comments@onwardtravelposters.com

Scan this code with your mobile for full station information.