



Gorton Station

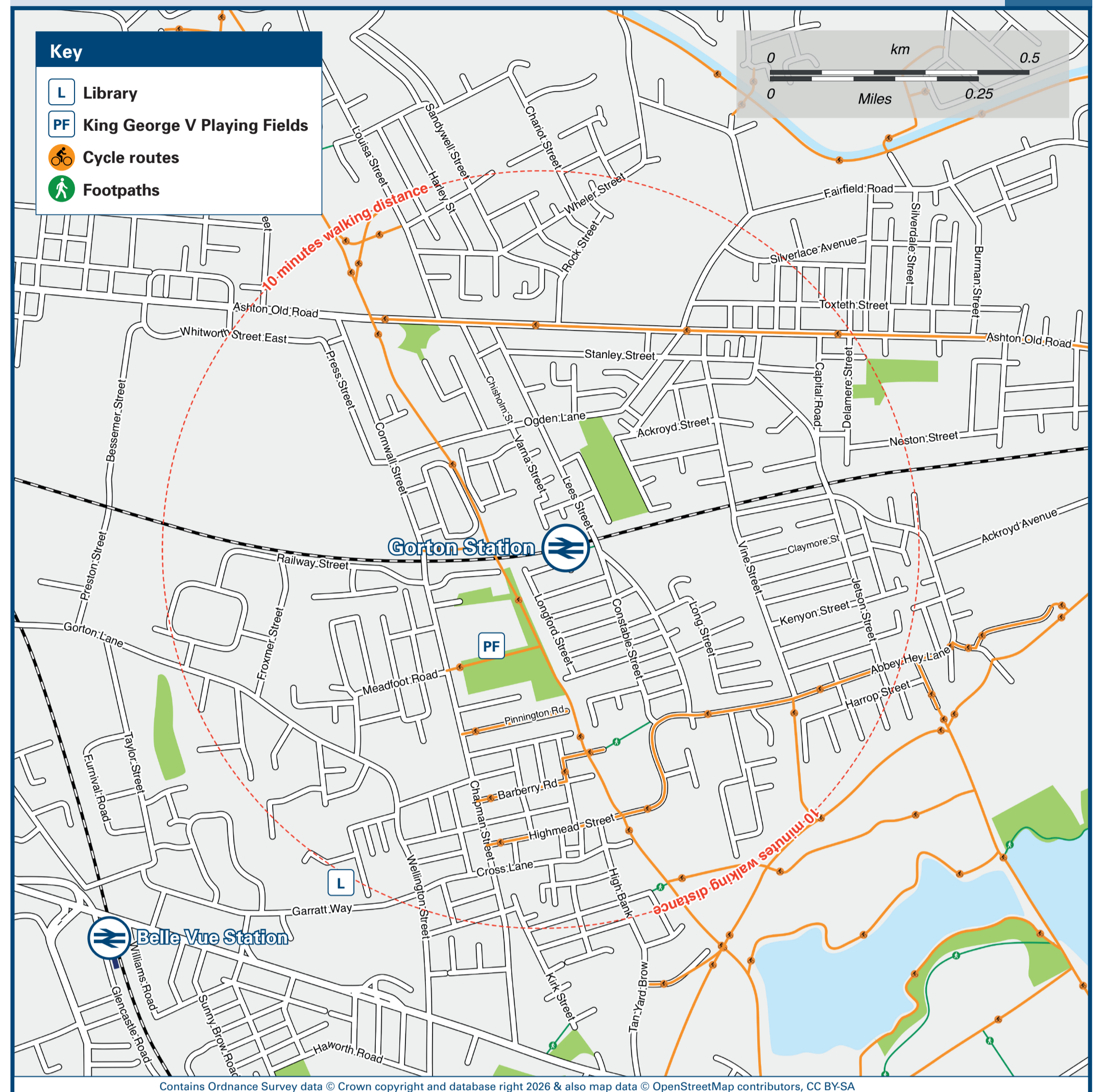
Onward Travel Information

Buses



Rail replacement buses Pick Up / Drop Off at the lay by located on the overbridge on Lees Street approx 50 yds from the station entrance.

Local area map



Main destinations by bus

(Data correct at February 2026)



DESTINATION	BUS ROUTES	BUS STOP
Arrowfield Estate	172#	A
Ashton Moss	7	C
Ashton-under-Lyne (Interchange)	7	C
Brookdale Park	171, 172	B
Burnage (Burnage Lane)	172	A
Burnage (Parrs Wood Road)	171, 172	A
Chorlton	172#	A
Clayton	171, 172	B
Dane Bank (Windmill Lane Shops)	7	D
Debdale Park (Hyde Road)	7	D
Didsbury Village	171	A

DESTINATION	BUS ROUTES	BUS STOP
Droylsden	7	C
East Didsbury	171	A
Fairfield	7	C
Gorton Shopping Centre	7	D
Heaton Chapel	7	D
Higher Openshaw	7	C
Levenshulme	171, 172	A
Newton Heath	171, 172	B
North Reddish	7	D

DESTINATION	BUS ROUTES	BUS STOP
Openshaw	171, 172	B
Reddish	7	D
Ryder Brow	171, 172	A
South Reddish	7	D
Stockport Interchange	7	D
West Didsbury	172	A

Notes

Bus routes 7 and 172 operate daily services.
 Bus route 171 operates a service on Mondays to Saturdays, only.
 For bus times and days of operation please contact Traveline on www.traveline.info or call: 0871 200 22 33
 Direct trains operate to this destination from this station.
 # Bus route 172 operates to the Arrowfield Estate and Chorlton on Sundays and public holidays, only.

Taxis

Gorton station has no taxi rank or cab office. Advance booking is essential, please consider using the following local operators: (Inclusion of this number doesn't represent any endorsement of the taxi firm)

Hastings Private Hire
0161 223 1066

Openshaw Taxis
0161 567 8966

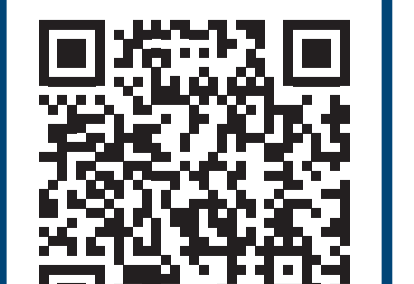
GETCAB
0161 669 0888

Further information about all onward travel

Local Cycle Info manchester.gov.uk <small>For more information about cycle routes.</small>	National Cycle Info walkwheelcycletrust.org.uk	Bus Times <small>See timetable displays at bus stops.</small> www.traveline.info 0871 200 22 33 <small>calls cost 13p per minute plus your phone company's access charge</small>	PlusBus plusbus.info <small>PlusBus is a discount price 'bus pass' that you buy with your train ticket. It gives you unlimited bus travel around your chosen town, on participating buses. Visit www.plusbus.info</small>
--	--	--	--

National Rail Enquiries

Online nationalrail.co.uk	NRE App Free National Rail Enquiries app for iOS and Android	Social Media facebook.com/nationalrailenq @nationalrailenq	Alert Me <small>You can sign up to Alert Me messages on the National Rail Enquiries website where you can receive train and platform notifications directly to your smart phone.</small> nationalrail.co.uk/alertme	Contact Centre 03457 48 49 50 <small>Calls cost no more than calls to geographic numbers (01 or 02) and may be recorded.</small>	PlusBike nationalrail.co.uk/plusbike <small>For more information.</small>
---	---	--	--	--	---



This poster shows details of popular destinations and main, frequent bus routes. Additional services may run, so please check with Traveline or see posters at local bus stops. Whilst considerable care has been taken to ensure the information contained on this poster is correct and accurate, National Rail cannot accept responsibility for any loss or inconvenience caused by any errors or omissions, or for loss, damage, injury or inconvenience relating to the cancellation, alteration, delay or diversion of a service. For any feedback, please e-mail comments@onwardtravelposters.com

Scan this code with your mobile for full station information.