



Gorton Station

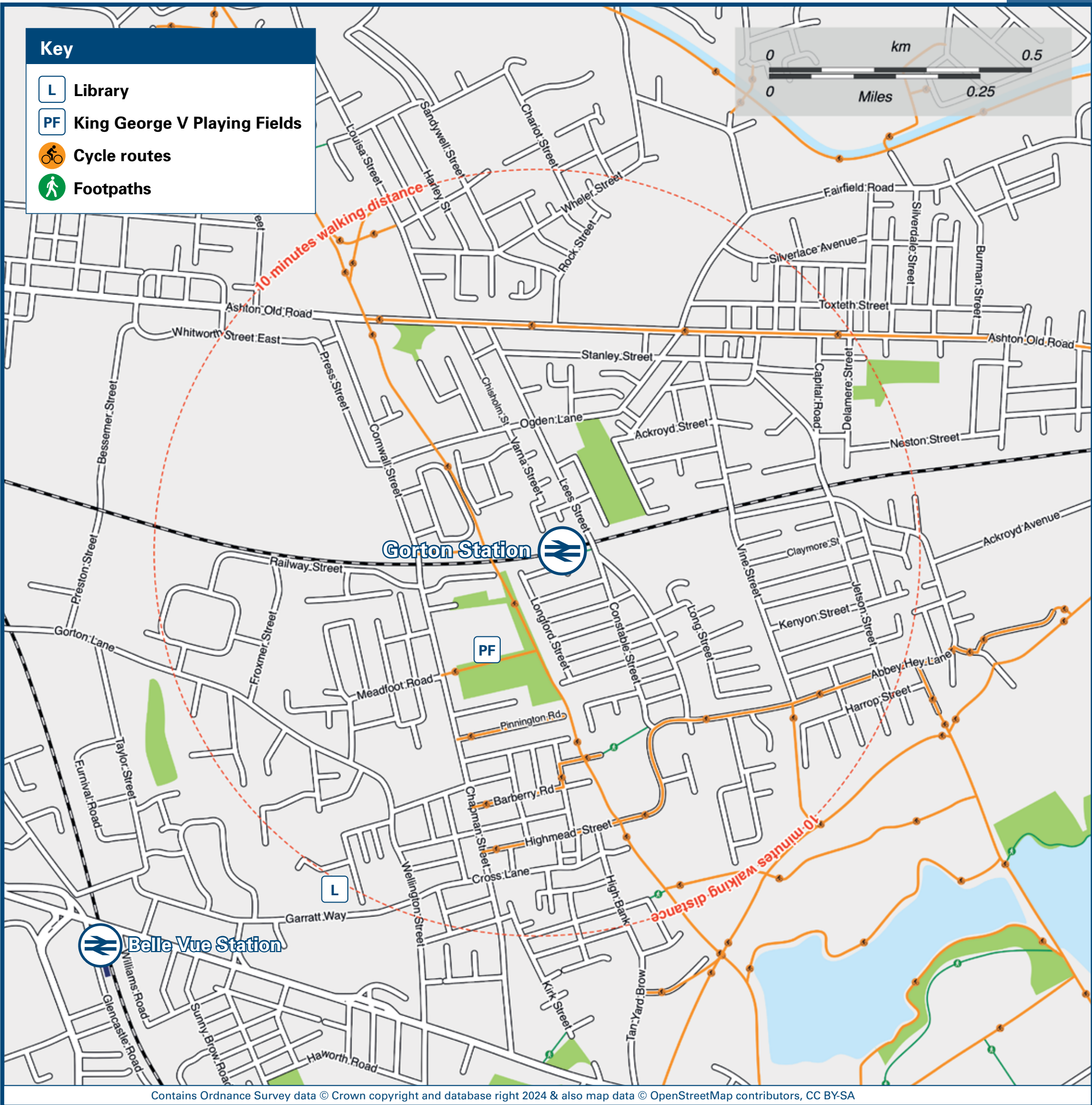
Onward Travel Information

Buses



Rail replacement buses depart from the lay-by located on the overbridge, approximately 50 yards from the station entrance.

Local area map



Main destinations by bus

(Data correct at October 2024)



DESTINATION	BUS ROUTES	BUS STOP
Arrowfield Estate	172#	A
Ashton Moss	7	C
Ashton-under-Lyne (Interchange)	7	C
Brookdale Park	171, 172	B
Burnage (Burnage Lane)	172	A
Burnage (Parrs Wood Road)	171, 172	A
Chorlton	172#	A
Clayton	171, 172	B
Dane Bank (Windmill Lane Shops)	7	D
Debdale Park (Hyde Road)	7	D
Didsbury Village	171	A

DESTINATION	BUS ROUTES	BUS STOP
Droylsden	7	C
East Didsbury	171	A
Fairfield	7	C
Gorton Shopping Centre	7	D
	171, 172	A
Heaton Chapel	7	D
Higher Openshaw	7	C
	171, 172	B
Levenshulme	171, 172	A
Newton Heath	171, 172	B
North Reddish	7	D
Openshaw	171, 172	B

DESTINATION	BUS ROUTES	BUS STOP
Reddish	7	D
Ryder Brow	171, 172	A
South Reddish	7	D
Stockport Interchange	7	D
West Didsbury	172	A

Notes

Bus routes 7 and 172 operate daily.
Bus route 171 operates Mondays to Saturdays.
For bus times please see bus stop timetables or contact Traveline on 0871 200 22 33.
Direct trains operate to this destination from this station.
Bus route 172 operates to Chorlton Bus Station and the Arrowfield Estate on Sundays and public holidays only.

Taxis

Gorton station has no taxi rank or cab office. Advance booking is essential, please consider using the following local operators: (Inclusion of this number doesn't represent any endorsement of the taxi firm)

Mantax Taxis
0161 230 3333

Hastings Private Hire
0161 223 1066

On Time Taxis
0161 370 8557

Further information about all onward travel

Local Cycle Info

manchester.gov.uk
For more information about cycle routes.

National Cycle Info

sustrans.org.uk
Sustrans is the UK's leading sustainable transport charity.

Bus Times

See timetable displays at bus stops.

www.traveline.info
0871 200 22 33
calls cost 15p per minute plus your phone company's access charge

NextBuses

Find the bus times for your stop.
Search for a bus stop by entering a postcode, street & town or a stop name & town.

PlusBus

plusbus.info
A discount price 'bus pass' that you buy with your train ticket. It gives you unlimited bus travel around your chosen town, on participating buses.

National Rail Enquiries

Online

nationalrail.co.uk

NRE App

Free National Rail Enquiries app for iOS and Android

Social Media

facebook.com/nationalrailenq
@nationalrailenq

Alert Me

You can sign up to Alert Me messages on the National Rail Enquiries website where you can receive train and platform notifications directly to your smart phone.
nationalrail.co.uk/alertme

Contact Centre

03457 48 49 50
Calls cost no more than calls to geographic numbers (01 or 02) and may be recorded.

PlusBike

nationalrail.co.uk/plusbike
For more information.



National Rail
Britain's train companies working together



This poster shows details of popular destinations and main, frequent bus routes. Additional services may run, so please check with Traveline or see posters at local bus stops. Whilst considerable care has been taken to ensure the information contained on this poster is correct and accurate, National Rail cannot accept responsibility for any loss or inconvenience caused by any errors or omissions, or for loss, damage, injury or inconvenience relating to the cancellation, alteration, delay or diversion of a service. For any feedback, please e-mail comments@onwardtravelposters.com

Scan this code with your mobile for full station information.